

Stearns
County,
Minnesota

FREE RESIDENT GUIDE

"Your Energy
Partnership"



Home • Farm • Commercial
Emergency Service • Budget Plans
Competitive Prices • Low Cost Tank Leases

Oils-Fuels *"Scheduled Delivery" For* Propane Gas
Both Fuel • Oil & Propane

FOR ALL LOCATIONS



Buffalo • Annandale • Cokato • Santiago
Howard Lake • Watertown • Maple Lake • Watkins
Eden Valley • Albany • Upsala • Little Falls • St. Martin

Toll Free • 1-800-524-FUEL(3835)

763-682-1464

2852 County Road, 12 N • Buffalo



www.centrasota.com

VISIT THE HOME OF
The Saint John's Bible

and Experience the First Handwritten and Illuminated
Bible Commissioned by a Benedictine Abbey in More Than 500 Years

HILL MUSEUM
&
MANUSCRIPT LIBRARY

Explore the Exhibit

View select original pages from
The Saint John's Bible, rare books,
art work, and manuscripts.

Browse the Gift Shop

Find seasonal items, keepsakes and
books from *The Saint John's Bible*,
and unique gifts for birthdays and
special occasions.

Visit our Website

www.hmml.org
www.saintjohnsbible.org
www.facebook.com/visitHMML



Directions to HMML:

Take I-94 to the Saint
John's University Exit
156. The Hill Museum
& Manuscript Library
is in the Bush Center,
found at the corner of
the second left as you
enter the campus.



© Detail from *Letter to the Seven Churches*, Donald Jackson, 2011.
The Saint John's Bible, Order of Saint Benedict, Collegeville, Minnesota.

Plan your Visit Today!

HMML is open Monday through
Friday, 8:00–4:30 PM. Open Saturdays
(Noon–4:00 PM) from June through
mid-December.

HMML is located on the campus of
Saint John's University:

P.O. Box 7300
Collegeville, MN 56321
Phone: 320-363-3514
Email: hmml@csbsju.edu

To schedule a group tour or
to verify hours, please contact
Tim Ternes by phone at
320-363-3351, or by email
at tternes@csbsju.edu.

KDDG

BOB 106 FM

"TOTAL COUNTRY"

HITS OF THE 50'S TO THE 90'S



A-J ACRES
CAMP GROUNDS

AJ Acres offers 150 acres of woods, flowers, trails and lakes
where you will be perfectly safe and enjoy solid comfort.

Large Wooded Sites • Electric Hookups (30/50 Amp)
Wilderness Tent Sites • Recreation Hall
Live Bait • Access to two lakes
Convenience Store • Security Gate

1300 195th St. E.
Clearwater, MN 55320

320-558-2847 • www.ajacrescampground.com • info@ajacrescamp.com

Table of Contents

- 2 Local Area Events**
- 3 Resident Services**
- 4 Stearns County History**
- 5-7 Stearns County Communities**
 - Albany St. Cloud
 - Cold Spring St. Joseph
 - Kimball Sartell
 - Melrose Sauk Centre
 - Paynesville Waite Park
 - Rockville
- 8 Parks & Recreation**
- 9 Hill Museum & Manuscript Library**
- 11 Local Area Attractions**
- 12-13 DNR License Centers**
- 14 Minnesota Hunting Seasons**
- 16 Minnesota Fishing Seasons**
- 21 Bicycle Trails**
- 24 Snowmobile Trails**
- 25 Trisko Jewelry Sculptures**
- 26 Minnesota Vikings Schedule**

2013

January

Su	Mo	Tu	We	Th	Fr	Sa
		1	2	3	4	5
6	7	8	9	10	11	12
13	14	15	16	17	18	19
20	21	22	23	24	25	26
27	28	29	30	31		

May

Su	Mo	Tu	We	Th	Fr	Sa
			1	2	3	4
5	6	7	8	9	10	11
12	13	14	15	16	17	18
19	20	21	22	23	24	25
26	27	28	29	30	31	

September

Su	Mo	Tu	We	Th	Fr	Sa
1	2	3	4	5	6	7
8	9	10	11	12	13	14
15	16	17	18	19	20	21
22	23	24	25	26	27	28
29	30					

February

Su	Mo	Tu	We	Th	Fr	Sa
				1	2	
3	4	5	6	7	8	9
10	11	12	13	14	15	16
17	18	19	20	21	22	23
24	25	26	27	28		

June

Su	Mo	Tu	We	Th	Fr	Sa
30					1	
2	3	4	5	6	7	8
9	10	11	12	13	14	15
16	17	18	19	20	21	22
23	24	25	26	27	28	29

October

Su	Mo	Tu	We	Th	Fr	Sa
		1	2	3	4	5
6	7	8	9	10	11	12
13	14	15	16	17	18	19
20	21	22	23	24	25	26
27	28	29	30	31		

March

Su	Mo	Tu	We	Th	Fr	Sa
31					1	2
3	4	5	6	7	8	9
10	11	12	13	14	15	16
17	18	19	20	21	22	23
24	25	26	27	28	29	30

July

Su	Mo	Tu	We	Th	Fr	Sa
	1	2	3	4	5	6
7	8	9	10	11	12	13
14	15	16	17	18	19	20
21	22	23	24	25	26	27
28	29	30	31			

November

Su	Mo	Tu	We	Th	Fr	Sa
					1	2
3	4	5	6	7	8	9
10	11	12	13	14	15	16
17	18	19	20	21	22	23
24	25	26	27	28	29	30

April

Su	Mo	Tu	We	Th	Fr	Sa
	1	2	3	4	5	6
7	8	9	10	11	12	13
14	15	16	17	18	19	20
21	22	23	24	25	26	27
28	29	30				

August

Su	Mo	Tu	We	Th	Fr	Sa
					1	2
3	4	5	6	7	8	9
10	11	12	13	14	15	16
17	18	19	20	21	22	23
24	25	26	27	28	29	30
31						

December

Su	Mo	Tu	We	Th	Fr	Sa
1	2	3	4	5	6	7
8	9	10	11	12	13	14
15	16	17	18	19	20	21
22	23	24	25	26	27	28
29	30	31				

2014

January

Mo	Tu	We	Th	Fr	Sa	Su
		1	2	3	4	5
6	7	8	9	10	11	12
13	14	15	16	17	18	19
20	21	22	23	24	25	26
27	28	29	30	31		

May

Mo	Tu	We	Th	Fr	Sa	Su
			1	2	3	4
5	6	7	8	9	10	11
12	13	14	15	16	17	18
19	20	21	22	23	24	25
26	27	28	29	30	31	

September

Mo	Tu	We	Th	Fr	Sa	Su
1	2	3	4	5	6	7
8	9	10	11	12	13	14
15	16	17	18	19	20	21
22	23	24	25	26	27	28
29	30					

February

Mo	Tu	We	Th	Fr	Sa	Su
				1	2	
3	4	5	6	7	8	9
10	11	12	13	14	15	16
17	18	19	20	21	22	23
24	25	26	27	28		

June

Mo	Tu	We	Th	Fr	Sa	Su
30					1	
2	3	4	5	6	7	8
9	10	11	12	13	14	15
16	17	18	19	20	21	22
23	24	25	26	27	28	29

October

Mo	Tu	We	Th	Fr	Sa	Su
		1	2	3	4	5
6	7	8	9	10	11	12
13	14	15	16	17	18	19
20	21	22	23	24	25	26
27	28	29	30	31		

March

Mo	Tu	We	Th	Fr	Sa	Su
31					1	2
3	4	5	6	7	8	9
10	11	12	13	14	15	16
17	18	19	20	21	22	23
24	25	26	27	28	29	30

July

Mo	Tu	We	Th	Fr	Sa	Su
	1	2	3	4	5	6
7	8	9	10	11	12	13
14	15	16	17	18	19	20
21	22	23	24	25	26	27
28	29	30	31			

November

Mo	Tu	We	Th	Fr	Sa	Su
					1	2
3	4	5	6	7	8	9
10	11	12	13	14	15	16
17	18	19	20	21	22	23
24	25	26	27	28	29	30

April

Mo	Tu	We	Th	Fr	Sa	Su
	1	2	3	4	5	6
7	8	9	10	11	12	13
14	15	16	17	18	19	20
21	22	23	24	25	26	27
28	29	30				

August

Mo	Tu	We	Th	Fr	Sa	Su
					1	2
3	4	5	6	7	8	9
10	11	12	13	14	15	16
17	18	19	20	21	22	23
24	25	26	27	28	29	30
31						

December

Mo	Tu	We	Th	Fr	Sa	Su
1	2	3	4	5	6	7
8	9	10	11	12	13	14
15	16	17	18	19	20	21
22	23	24	25	26	27	28
29	30	31				

LincolnMarketing
SINCE 1984

This free publication is made possible by the advertisers and other local agencies and may not be reproduced. Please support the local advertisers in this publication. Comments and/or suggestions may be directed to: info@lincolnmarketing.us
View this publication online at: www.lincolnmarketing.us

SCAN THE CODE
TO DOWNLOAD
THIS GUIDE



Local Area Events

JANUARY

Festival of Lights | St. Cloud
 Moonlight Ski | St. Cloud
 7th Annual Sons of Norway Barnelopet | St. Cloud
 Breakfast Club – Red Wing to Hong Kong | St. Cloud
 Tour De Danse | St. Cloud
 Dancing with Many Voices | St. Cloud

FEBRUARY

Youth Choir Festival | St. Cloud
 Gingerbread Arts & Crafts Show | St. Cloud
 Saint Cloud Sportsmens Boat, Camping and Vacation Show | St. Cloud
 Central MN Wellness Expo | St. Cloud
 Boat Show | St. Cloud
 Farm Show | St. Cloud

MARCH

March Madness | Cold Spring
 Empty Bowls Soup Sampler Benefit | St. Cloud

APRIL

Earth Day 1/2 Marathon | St. Cloud
 Chocolate Fantasy | St. Cloud
 iRock Run 5k | Cold Spring
 Central MN Car Show | St. Cloud

MAY

Apple Duathlon | Sartell

JUNE

Rapids River Days | Sauk Centre
 Downtown Art Crawl | St. Cloud
 Granite City Days | St. Cloud
 Home Tour & Wine Tasting | St. Cloud
 SummerFest | Sartell
 Waite Park Family Fun Fest

JULY

Hometown Pride Days | Cold Spring
 Rock-Fest | Rockville
 Stearns County Fair | Sauk Centre
 Sidewalk Sale & Crazy Days | St. Cloud
 66th Annual St. Cloud Fireworks
 Church of St. Joseph Parish Festival
 Wine Tasting | St. Joseph
 St. Cloud Air Show

AUGUST

Rock N' Block Party | Sartell
 Take A Day Off On the Mississippi River | Sartell
 St. Cloud Antique Auto Club
 MN Bluegrass & Old-Time Music Festival | St. Cloud
 St. Cloud Antique Auto Club Car Show & Swap Meet

SEPTEMBER

CMBA Fall Tour of Homes | St. Cloud
 St. Mary's Cathedral Block Party | St. Cloud
 Little Falls Arts & Crafts Fair
 St. Cloud Pride Fest
 Millstream Arts Festival | St. Joseph

OCTOBER

Quilt Show | St. Cloud
 OktoberFest | St. Joseph
 Fall Festival | Sauk Centre

NOVEMBER

Storybook Christmas Boutique | St. Cloud

DECEMBER

Winter Nights & Lights Parade | St. Cloud

Resident Services

Administration.....	(320) 656-3620
Assessor.....	656-3680
Auditor/Treasurer.....	656-3900
Building Facilities.....	656-3611
Corrections.....	656-6150
County Attorney.....	656-3880
County Commissioners.....	656-3601
Emergency Management.....	259-3940
Environmental Services.....	656-3613
Extension Service.....	255-6169
Human Resources.....	656-3606
Human Services.....	656-6000
Information Technology.....	656-6050
Parks & Recreation.....	255-6172
Public Health.....	656-6155
Public Works.....	255-6180
Recorder.....	656-3855
Sheriff.....	259-3700
Veterans Services.....	656-6176



Rollie
Werner
Well Drilling
Water is our business!
 Irrigation Wells
 14311 55th St. NW Annandale, MN
 30+ Years in Well and Pump Service
 Call "Rollie" 320-274-3856 Cell: 320-980-1212



Proud sponsor of Children's Miracle Network!
PAYNESVILLE DAIRY QUEEN
 320-243-4676
 832 W. Minnesota St. W • Paynesville, MN



Stearns County History (St. Cloud, County Seat)

Before settlement, Stearns County was home to the Dakota, Sioux, Chippewa and Ojibwa tribes. In the 1800s, explorers began arriving and many fur trading posts were established. In the 1850s, many immigrants settled in the Stearns area for its fertile soil and were involved in agriculture. Officially established in 1855, Stearns County was originally named Stevens County after Gov. Isaac I. Stevens. The name was later changed to Stearns to honor Territorial Council member Charles T. Stearns, an active participant in the founding of the county. St. Cloud was designated the county seat in the 1860s, and many efforts were made by the county government to build roads, bridges and schools and assist residents. In 1913, an attempt was made to move the county seat to Albany, but due to a lack of signatures on the petition, St. Cloud would remain the home of Stearns County affairs. Today Stearns County is home to approximately 147,076 residents.

Stearns County Communities

CITIES:

ALBANY – pop. 2,113
AVON – pop. 1,315
BELGRADE – pop. 714
BROOTEN – pop. 616
COLD SPRING – pop. 3,751
EDEN VALLEY – pop. 954
ELROSA – pop. 178
FREEPORT – pop. 469
GREENWALD – pop. 177
HOLDINGFORD – pop. 723
KIMBALL – pop. 704
LAKE HENRY – pop. 86
MEIRE GROVE – pop. 144
MELROSE – pop. 3,145
NEW MUNICH – pop. 344
PAYNESVILLE – pop. 2,262
RICHMOND – pop. 1,268
ROCKVILLE – pop. 2,530
ROSCOE – pop. 108
ST. ANTHONY – pop. 79
ST. AUGUSTA – pop. 3,065
ST. CLOUD (COUNTY SEAT) – pop. 67,136
ST. JOSEPH – pop. 6,114
ST. MARTIN – pop. 283
ST. ROSA – pop. 46
ST. STEPHEN – pop. 803
SARTELL – pop. 13,915
SAUK CENTRE – pop. 3,945
SPRING HILL – pop. 49
WAITE PARK – pop. 6,796

TOWNSHIPS:

ALBANY – pop. 1,473
ASHLEY – pop. 287
AVON – pop. 2,341
BROCKWAY – pop. 2,504
COLLEGEVILLE – pop. 3,483
CROW LAKE – pop. 370
CROW RIVER – pop. 387
EDEN LAKE – pop. 1,579
FAIR HAVEN – pop. 1,604
FARMING – pop. 1,089
GETTY – pop. 440
GROVE – pop. 535
HOLDING – pop. 1,153
KRAIN – pop. 926
LAKE GEORGE – pop. 388
LAKE HENRY – pop. 371
LE SAUK – pop. 1,685
LUXEMBURG – pop. 704
LYNDEN – pop. 1,871
MAINE PRAIRIE – pop. 1,764
MELROSE – pop. 886
MILLWOOD – pop. 982
MUNSON – pop. 1,472
NORTH FORK – pop. 289
OAK – pop. 640
PAYNESVILLE – pop. 1,533
RAYMOND – pop. 302
ST. JOSEPH – pop. 2,281
ST. MARTIN – pop. 509
ST. WENDEL – pop. 2,242
SAUK CENTRE – pop. 1,085
SPRING HILL – pop. 475
WAKEFIELD – pop. 2,915
ZION – pop. 493

**Populations are approximate.*

Stearns County Communities

ALBANY

Albany was first settled in 1863 and the area was originally known as Schwinghammer Settlement. As the railroad arrived in 1871, the community was renamed Albany after Albany, New York, from where many settlers originated. Albany was incorporated in 1890 and the area has continued to thrive. Today Albany is home to approximately 2,113 residents.

COLD SPRING

The first settlers, mostly of German descent, traveled along the Red River Oxen Trail, where they rested and stopped near present day Cold Spring. Settlers were attracted to the area because it resembled the German countryside. Cold Spring was established in 1856 and today is home to approximately 3,751 residents.

KIMBALL

The first post office in the Kimball area was established in 1867 and the community was originally known as Kimball Prairie. Kimball Prairie was renamed Kimball in 1887 and as the railroad arrived the area began to grow. Early businesses included a general store, livery stable, creamery and filling station and a church and school were constructed to meet the growing needs of its residents. Today Kimball is home to approximately 704 residents.

MELROSE

The first settlers arrived in the 1850s as two brothers, Warren and Napoleon Adley, established a homestead on the Sauk River. By 1867, a hotel, stage coach station, post office and school had been built and the city was incorporated in 1887. It was named after Melrose, Scotland, the area the Adley brothers originated from. Today Melrose is home to approximately 3,145 residents.

PAYNESVILLE

Paynesville was named after its first settler, Edwin E. Payne, who arrived to the area in 1857 and served as its first postmaster. Payne platted streets and businesses were established and the area began to prosper. Paynesville was incorporated in 1887 and railroad development sparked growth. Today Paynesville is home to approximately 2,262 residents.

ROCKVILLE

Located southwest of St. Cloud, Rockville is a relatively new city. The old city of Rockville merged with Rockville Township and the city of Pleasant Lake in 2002. Today Rockville is home to approximately 2,530 residents.

Stearns County Communities

ST. CLOUD (COUNTY SEAT)

Once a way station on the Red River Trails, St. Cloud developed from three separate settlements and unified to offset hardship. The city was incorporated in 1856 and is named after the Parisian suburb, Saint Cloud, by John Wilson. Since the 1880s, granite quarries have operated in St. Cloud, deeming the area "Granite City." Today St. Cloud is home to approximately 67,136 residents.

ST. JOSEPH

As many travelers and explorers arrived to the area, St. Joseph began as a German settlement in 1854. It is home to the world's only operating Schwalbach Mechanical Clock which was built in 1906 by Mathias Schwalbach. Schwalbach was a master clock tower builder from the Rhine country and his clock can be found in the Church of St. Joseph. Today St. Joseph is home to approximately 6,114 residents.

SARTELL

Sartell was once known as the "Third Rapids," named by a French fur trader. In 1854 Joseph B. Sartell arrived to the area and opened a flour mill on the Watab River. In the 1880s, along with his brothers, Joseph B. Sartell opened the Sartell Lumber Company. In 1907, Sartell was incorporated and named after its founder. Today Sartell is home to approximately 13,915 residents.

SAUK CENTRE

In 1857, Alexander Moore and other settlers staked out the boundaries of what would become Sauk Centre. A dam was built that same year and the city grew around the logging and milling industry on the river. Sauk Centre was incorporated as a village in 1876. The city is home to Sinclair Lewis, a world-famous novelist and America's first winner of the Nobel Prize for literature. Today Sauk Centre is home to approximately 3,945 residents.

WAITE PARK

Development in Waite Park began in the 1840s as travelers crossed the Sauk River. Once known as Waite's Crossing, Waite Park is named after Henry Chester Waite of St. Cloud. Waite was a landowner, attorney, statesman and entrepreneur who became Minnesota's first attorney. In 1983 Waite Park was incorporated as a village. Today Waite Park is home to approximately 6,796 residents.

Parks & Recreation

HEIMS MILL CANOE ACCESS

32324 County Rd. 1 | St. Cloud

Heims Mill Canoe Access provides access to the Sauk and Mississippi Rivers and features a picnic area with a grill. Visitors can enjoy bird watching and fishing.

LAKE KORONIS REGIONAL PARK

14076 Bluefield Rd. | Paynesville

Located on 312 acres, Lake Koronis Regional Park features a boat access, picnic area with shelter, play area, swimming beach, campground and walking trails.

LAKE SYLVIA WAYSIDE & ACCESS

32574 County Rd. 17 | Melrose

Located on three acres, Lake Sylvia Wayside and Access features a boat launch with fishing pier and picnic areas with tables and grills.

MAYHEW LAKE PARK

8996 30th Ave. NE | Sartell

Located on 4.4 acres near Mayhew Lake, Mayhew Lake Park features picnic tables, lake access and a fishing pier.

MILLER LANDING

7502 County Rd. 138 | St. Cloud

Miller Landing features canoe access to the Sauk River and a picnic site with a grill.

QUARRY PARK & NATURE PRESERVE

1802 County Rd. 137 | Waite Park

Quarry Park and Nature Preserve is a unique park featuring granite reflecting pools, trails for biking, skiing and walking, a swimming hole, and excellent trout fishing.

ST. MARTIN CANOE ACCESS

27427 Sauk Landing Rd. | Paynesville

The St. Martin Canoe Access provides canoe access to the Sauk River. The St. Martin Jaycee Park is located nearby that features a ball field.

SPRING HILL COUNTY PARK

31938 County Rd. 14 | Melrose

Located on 82 acres, Spring Hill Park features an open-air shelter, horseshoe pits, play area, canoe access, nature areas, canoe camping sites and trails.

UPPER SPUNK LAKE COUNTY PARK

17626 County Rd. 9 | Avon

Located on 7 acres, Upper Spunk Lake County Park features picnic areas with grills, canoe launch and shoreline fishing.

WARNER LAKE COUNTY PARK

1485 Country Rd. 143 | Clearwater

Located on 241 acres, Warner Lake County Park features an open-air shelter, picnic shelters, camping facilities, swimming beach, boat launch, fishing pier, play area and year-round trails for cross-country skiing, biking and walking.

Hill Museum & Manuscript Library

SAINT JOHN'S UNIVERSITY, COLLEGEVILLE, MINNESOTA

Fire. Flood. Theft. War. Forces such as these have threatened manuscripts ever since these integral pieces of our cultural history have existed. Shortly after World War II, a war that was especially catastrophic for manuscripts, Saint John's University in Collegeville, Minnesota, took a bold and visionary step to create a new library dedicated to preserving the fate of priceless manuscripts held in monasteries and libraries. Teams from this non-profit facility, the Hill Museum & Manuscript Library (HMML), have been photographing manuscript collections across Europe, Ethiopia, the Middle East, and south India ever since.

HMML's mission is to identify, digitally photograph, catalog, and archive endangered manuscripts belonging to threatened communities around the world. Having formed partnerships with more than 480 libraries and archives, HMML has photographically preserved over 125,000 medieval, renaissance, and early-modern manuscripts. These resources have become essential tools for global manuscript research, and are available through HMML's online catalog, OLIVER, and image database, *Vivarium*.

By contrast, HMML is also home to one of the world's newest manuscripts—*The Saint John's Bible*. Entirely handwritten with quills on calfskin vellum and illuminated with gold leaf, *The Saint John's Bible* is the first Bible of its kind to be commissioned by a Benedictine Abbey in more than 500 years. After more than ten years of continuous work by a team of scribes and artists in Wales, the project was completed in 2011. Select original pages from *The Saint John's Bible* are always on display at HMML, and reproduced editions of all seven volumes—as well as fine art prints, note cards, and other books produced from the beautiful imagery—are available at the HMML gift shop and online at www.saintjohnsbible.org/store.

Visitors are always welcome at HMML and are encouraged to view *The Saint John's Bible* exhibition as well as rare books, manuscripts, and related artwork that rotate on display throughout the year. The gift shop is full of seasonally relevant items that in turn support the costs of the organization. Donations fuel the digitization, archiving, and cataloging of endangered manuscript collections, and help HMML make these digitized materials freely available to users throughout the world. Visit www.hmml.org to learn more.

**Courtesy of the Hill Museum & Manuscript Library.*



Mother of Mercy Campus of Care

Mother of Mercy Campus of Care Retirement Living in Albany, Minnesota

MAIN CAMPUS Care Center

Long Term and Short Stay Care
Memory Care • Rehabilitation Services

Apartments
Independent Living
Assisted Living and Memory Lane
Assisted Living Services
320.845.2195

MERCY MANOR Apartments

Income-Based Senior Housing
320.845.2969

Mercy Manor &
Mercy Manor II



www.motherofmercymn.com

T.J. Potter TRUCKING

Todd & Barb Potter • Owners
www.tjpottertrucking.com

1-800-755-3143 • 763-262-5850

13000 Sherburne Ave. • Becker, MN



48 States

Local Area Attractions

A MAZE'N FARMYARD

57649 Hwy. 55 | Eden Valley | (320) 453-6901

ASSUMPTION CHAPEL

23010 Chapel Hill Dr. | Cold Spring | (320) 685-4186

CATHEDRAL OF SAINT MARY

25 8th Ave. S | St. Cloud | (320) 251-1840

CENTRAL MINNESOTA COMMUNITY THEATER

913 West St. | St. Cloud | (320) 259-0250

GRANITE TRIO

600 Germain St. W | St. Cloud | (320) 257-8600

HERITAGE NATURE CENTER

225 33rd Ave. S | St. Cloud | (320) 255-7255

KIMBALL GOLF CLUB

11823 Co. Rd. 150 | Kimball | (320) 398-2285

MILL DAM

100 5th Ave. E | Melrose | (320) 256-7174

MN AMATEUR BASEBALL HALL OF FAME

1325 10th Ave. N | St. Cloud | (320) 252-8227

MUNSINGER & CLEMENS GARDENS

Riverside Dr. & 13th St. SE | St. Cloud | (320) 255-7238

NATIONAL HOCKEY CENTER

720 4th Ave. S | St. Cloud | (320) 255-3327

PAN MOTOR COMPANY

2117 251st St. | St. Cloud | (320) 257-9933

PARAMOUNT THEATRE & VISUAL ARTS CENTER

913 Germain St. W | St. Cloud | (320) 259-5463

PAYNESVILLE PIONEER HOUSE

251 Ampe Dr. | Paynesville | (320) 243-7547

PIONEER PLACE ON FIFTH THEATRE

22 5th Ave. S | St. Cloud | (320) 203-1233

ST. CLOUD CIVIC CENTER

10 4th Ave. S | St. Cloud | (320) 255-7272

ST. CLOUD RIVER BATS BASEBALL

5001 Veterans Dr. | St. Cloud | (320) 240-9798

ST. CLOUD SYMPHONY ORCHESTRA

819 Germain St. W | St. Cloud | (320) 252-7276

SAND PRAIRIE EDUCATION AREA

Hwy. 10 | St. Cloud | (320) 255-4279

SINCLAIR LEWIS' BOYHOOD HOME

812 Sinclair Lewis Ave. | Sauk Centre | (320) 352-5201

STEARNS COUNTY COURTHOUSE

725 Courthouse Square | St. Cloud | (320) 656-3620

SUMMERLAND FAMILY FUN PARK

Hwy. 23 E | St. Cloud | (320) 251-0940

DNR License Centers

You can purchase hunting and fishing licenses, cross-country ski passes and snowmobile trail stickers through the Electronic License System. Online: www.dnr.state.mn.us, Toll-Free: (888) 665-4236 or visit one of the ELS agents available throughout Stearns County:

ALBANY

ALBANY TESORO

140 Railroad Ave. | Albany | (320) 845-6577

DON'S I-94 CONVENIENCE STORE

310 8th St. S | Albany | (320) 845-4646

HOLIDAY STATION STORE (#3511)

800 Shamrock Ln. | Albany | (320) 845-7075

AVON

AVON QUICK MART

304 Blattner Dr. | Avon | (320) 356-7992

SCHMIDT'S AVON TEXACO

303 Avon Ave. S | Avon | (320) 356-7273

THE STORE

37215 Co. Rd. 9 | Avon | (320) 369-3711

BELGRADE

MICKI'S

521 Wells St. | Belgrade | (320) 254-8294

COLD SPRING

CENTRAL LAKES GAS & BAIT

216 Red River Ave. | Cold Spring | (320) 685-3583

KEISS BROS. SHELL

204 Sauk River Rd. | Cold Spring | (320) 685-4300

SUPER AMERICA (#4790)

215 Red River Ave. | Cold Spring | (320) 685-4481

WENNER COMPANY

319 Main St. | Cold Spring | (320) 685-8673

FREEPORT

FREEPORT GAS & GROCERY

203 Main St. E | Freeport | (320) 836-7152

RUDY'S COUNTRY STORE

28916 Co. Rd. 17 | Freeport | (320) 836-2583

SCHMIDT'S FREEPORT

104 1st Ave. S | Freeport | (320) 836-2850

HOLDINGFORD

BIALKA'S BAR & STORE

12626 Co. Rd. 17 | Holdingford | (320) 746-2440

HEADLEY HARDWARE, INC.

561 W Main St. | Holdingford | (320) 746-2973

KIMBALL

SCHMITTY'S KIMBALL CONOCO

115 Hwy. 55 E | Kimball | (320) 398-2600

MELROSE

CASEY'S GENERAL STORE (#2650)

817 Co. Rd. 13 | Melrose | (320) 256-3965

MELROSE HARDWARE

404 E Main St. | Melrose | (320) 256-3511

TOTAL EXPRESS

406 S 2nd Ave. E | Melrose | (320) 256-4478

PAYNESVILLE

JIM'S STANDARD SERVICE

915 W Mill St. | Paynesville | (320) 243-4661

HILLTOP STOP

28518 Hwy. 55 E | Paynesville | (320) 243-3133

PAYNESVILLE FLEET SUPPLY

30055 Hwy. 55 | Paynesville | (320) 243-3556

DNR License Centers

RICHMOND

CHANNEL MARINE & SPORT, INC.

101 4th St. SW | Richmond | (320) 597-5975

RIVERSIDE RESORT

21026 Hwy. 22 | Richmond | (320) 597-2473

SOUTHSIDE TRUCKSTOP

30 4th St. SW | Richmond | (320) 597-2173

ROCKVILLE

ROCKVILLE GAS & BAIT

108 E Broadway St. | Rockville | (320) 253-1999

SARTELL

BENTON DRIVE MINI-SERV

2380 35th St. N | Sartell | (320) 259-0364

SAUK CENTRE

CASEY'S GENERAL STORE (#1738)

826 Main St. | Sauk Centre | (320) 352-9938

FLETCHER'S BAIT

1515 Sinclair Lewis Ave. | Sauk Centre | (320) 352-2155

KRANZ SUPER STOP

1185 S Main St. | Sauk Centre | (320) 352-6655

SAUK CENTRE FLEET SUPPLY

1050 Centre St. | Sauk Centre | (320) 352-5261

WALMART SUPERCENTER (#4253)

205 12th St. S | Sauk Centre | (320) 352-7954

ST. AUGUSTA

ST. AUGUSTA MINI-SERV

24876 Co. Rd. 7 | St. Augusta | (320) 252-3040

ST. CLOUD

BAIT DEN

3267 Roosevelt Rd. | St. Cloud | (320) 257-0162

ST. CLOUD, CONTD.

HOLIDAY STATION STORE (#3776)

730 Hwy. 10 S | St. Cloud | (320) 529-8307

SCHMIDT'S LUX SHELL

6515 Co. Rd. 136 | St. Cloud | (320) 253-9828

SPEEDSTOP ON 9TH

701 9th Ave. N | St. Cloud | (320) 333-3615

STOP LIGHT BAIT

45 8th Ave. SE | St. Cloud | (320) 255-9689

SUPER AMERICA (#4256)

600 S Hwy. 10 | St. Cloud | (320) 259-6493

WALMART SUPERCENTER (#1633)

21 Co. Rd. 120 | St. Cloud | (320) 259-1527

ST. JOSEPH

JM SPEEDSTOP

27 Birch St. W | St. Joseph | (320) 363-7272

ST. MARTIN

MONDLOCH, INC.

125 Main St. | St. Martin | (320) 548-3255

ST. STEPHEN

CONOMART

202 Central Ave. | St. Stephen | (320) 253-9508

WAITE PARK

GANDER MOUNTAIN LLC (#493)

614 2nd St. S | Waite Park | (320) 654-6600

MILLS FLEET FARM

2630 Division St. | Waite Park | (320) 253-8889

ST. CLOUD SHEELS ALL SPORTS

40 N Waite Ave. | Waite Park | (320) 252-9494

STEARNS COUNTY LICENSE CENTER

3301 Co. Rd. 138 | Waite Park | (320) 656-6540

www.LincolnMarketing.us | Resident Guide 13

Minnesota Hunting Seasons

For general information on firearm safety training call: 1 (888) 646-6367 or (651) 296-6157.

Contact the MN DNR for specific zone areas:

Online: www.dnr.state.mn.us, Toll Free: 1 (888) 665-4236.

You can purchase hunting and fishing licenses by phone: 1 (888) 665-4236.

HUNTING

RABBIT & SQUIRREL

09/14/13 - 02/28/14

GRAY & RED FOX, BADGER, OPOSSUM & RACCOON

(North) 10/19/13 - 03/13/14

(South) 10/19/13 - 03/15/14

GOOSE

(Early Canada Goose) 09/01/13 - 09/20/13

CROW

03/01/13 - 03/31/13; 07/15/13 - 10/15/13

BEAR

09/01/13 - 10/13/13

MOURNING DOVE

09/01/13 - 10/30/13

SNIPE & RAIL

09/01/13 - 11/04/13

DEER

(Archery) 09/14/13 - 12/31/13

(Youth) 10/17/13 - 10/20/13

(Camp Ripley Archery) 10/17/13 - 10/18/13

(Firearm 2A & 3A) 11/09/13 - 11/17/13

(Firearm 1A) 11/09/13 - 11/24/13

(Firearm 3B) 11/23/13 - 12/01/13

(Muzzleloader) 11/30/13 - 12/15/13

SHARPTAILED GROUSE

09/14/13 - 11/30/13

HUNTING, CONTD.

GROUSE & GRAY PARTRIDGE

09/14/13 - 01/01/14

MOOSE

(Northeast Zone) 09/28/13 - 10/13/13

TURKEY

09/28/13 - 10/27/13

PHEASANT

10/12/13 - 01/01/14

PRAIRIE CHICKEN

10/19/13 - 10/23/13

FISHER & PINE MARTEN

11/30/13 - 12/05/13

FURBEARER TRAPPING

BEAVER

(North) 10/26/13 - 04/30/14

(South) 11/02/13 - 04/30/14

MINK & MUSKRAT

(North) 10/26/13 - 02/28/14

(South) 11/02/13 - 02/28/14

OTTER

(North Zone) 10/26/13 - 01/05/14

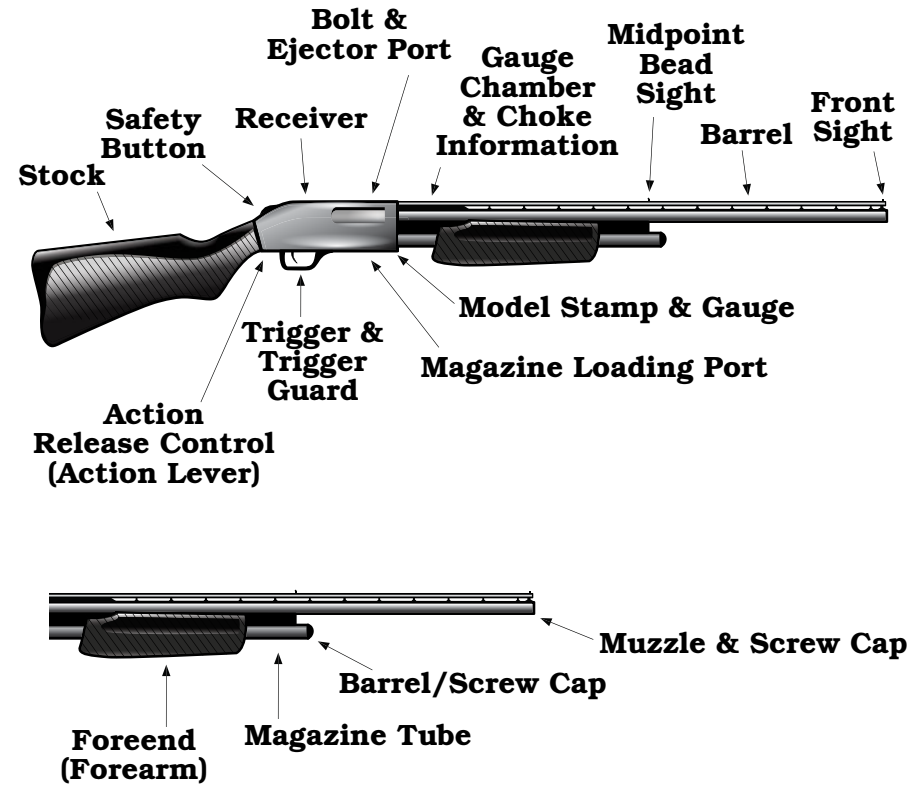
(South Zone) 11/02/13 - 01/05/14

BOBCAT

11/30/13 - 12/05/13

*Contact www.dnr.state.mn.us for more information

Hunting Safety



All hunters should consider taking an advanced hunter education class to learn the latest hunting techniques along with tips on coming home alive.

Here are five suggestions for a safe and successful hunting experience:

1. Get a detailed map of the area you are hunting, review it before you leave, and carry it with you in the field.
2. Carry a compass and know how to use it. Decide ahead of time the direction to head for if you get lost or disoriented.
3. Weather can change quickly, so hunters should carry a simple survival kit and be prepared for an unexpected overnight stay in the field. The survival kit should contain a rope, a knife, water, waterproof matches, an emergency shelter, and first aid supplies.
4. If you are on the water, make sure to wear a personal flotation device (life preserver).
5. Know your hunting partners' physical and emotional limitations, as well as your own, and don't push your partners or yourself beyond those limits.

Minnesota Fishing Seasons

BOWFISHING

05/01/13 - 02/23/14

WALLEYE, SAUGER & NORTHERN PIKE

05/11/13 - 02/23/14

LARGEMOUTH BASS*

05/11/13 - 02/23/14

SMALLMOUTH BASS*

(Catch & Release) 09/09/13 - 02/23/14

LAKE TROUT*

(Outside BWCA) 01/12/13 - 03/31/13
05/11/13 - 09/30/14

STREAM TROUT*

(Southeast) 01/01/13 - 03/31/13
(Catch & Release) Spring: 04/01/13 - 04/12/13
Summer: 05/11/13 - 10/31/13
Fall: 09/15/13 - 09/30/13
(All Lakes) 05/11/13 - 10/31/13

Muskie

06/01/13 - 12/01/13

Take-a-kid fishing weekend

06/07/13 - 06/09/13

**Contact the MN DNR for specific zone information by calling: 1 (888) 646-6367.*



Boating Safety

Operating Watercraft

Follow these guidelines to help prevent and prepare for capsizing, swamping, or someone falling overboard.

Make sure that you and your passengers are wearing life jackets while the boat is moving.

Attach the ignition safety lanyard to your wrist, clothes, or life jacket.

Don't allow anyone to sit on the gunwale, bow, seat backs, motor cover, or areas not designed for seating. Also, don't let anyone sit on pedestal seats when craft is not in idle.

Don't overload your boat. Balance the load of passengers and gear stored on-board.

Keep your center of gravity low by not allowing people to stand up or move around while craft is in motion.













In small boats, don't allow anyone to lean beyond the gunwale.

Turn boat at slow rates of speed.

Secure the anchor line to the bow, never to the stern.

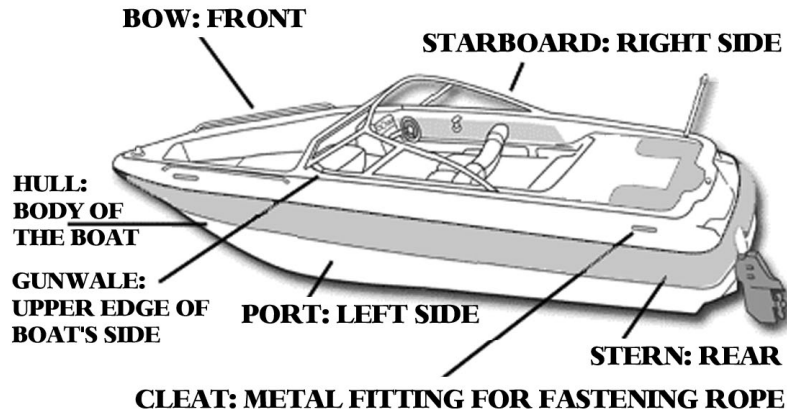
Don't risk operating water craft in rough conditions or bad weather.

Common Fish Species

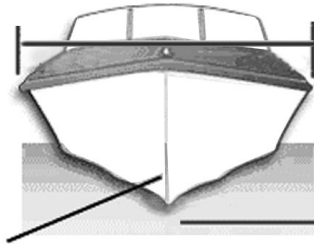
 Bass	 Crappie	 Smelt
 Catfish	 Muskellunge	 Sunfish
 Carp	 Northern Pike	 Trout
 Cisco-Tullibee-Herring	 Salmon	 Walleye

Boating Safety

Know Your Craft



BEAM: MAXIMUM WIDTH OF BOAT



KEEL: CENTERLINE OF BOAT OR EXTENSION OF HULL (INCREASES STABILITY)

Who May Operate a Motorboat (Other Than a Personal Watercraft)

For engines 25 horsepower or less:

Those under age 12 may operate without restrictions.

For engines over 25 horsepower through 75 horsepower:

Those under age 12 must have someone 21 years of age or older on board within reach of the controls.

For engines over 75 horsepower:

No children under age 12 may operate, even with an adult on board.

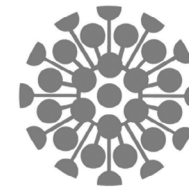
Other restrictions apply to boat operators 12 to 17 years old:

Operators from 12 to 17 years of age may operate engines of 25 horsepower or lower with no restrictions.

For engines over 25 horsepower:

Operators 12 to 17 years of age must have:

A watercraft operator's permit, or someone age 21 years or older on board within reach of the controls.



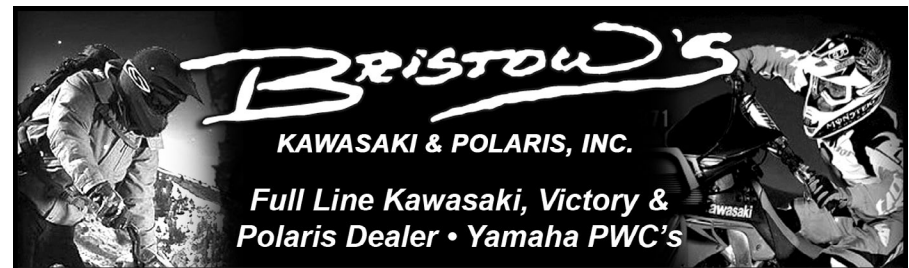
Tupperware®

Parties
Cooking Demos
Fundraisers
Bridal Showers



Great Business Opportunities

Kristin Abraham • 320-292-5353
www.my2.tupperware.com/kristinabraham



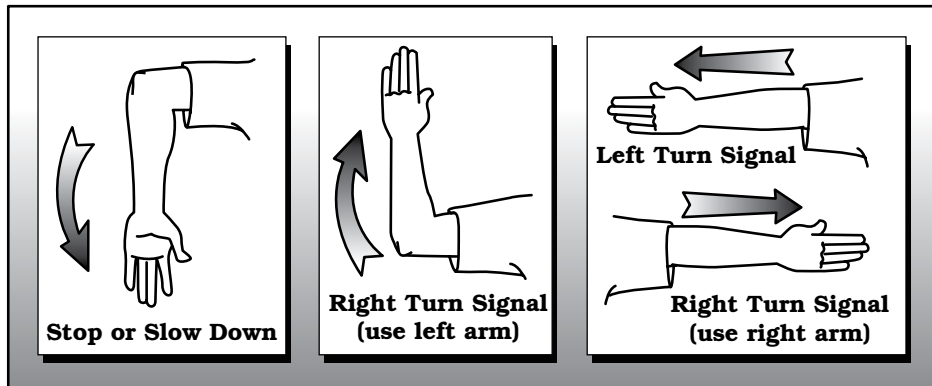
• SKEETER • ALUMACRAFT • YAR-CRAFT • MANITOU
• MERCURY • YAMAHA • SUZUKI • EVINRUDE
• FLOE LIFTS & DOCKS

New & Used Parts
Accessories • Clothing
Service All Makes & Models
www.bristowsinc.com
800-256-7871

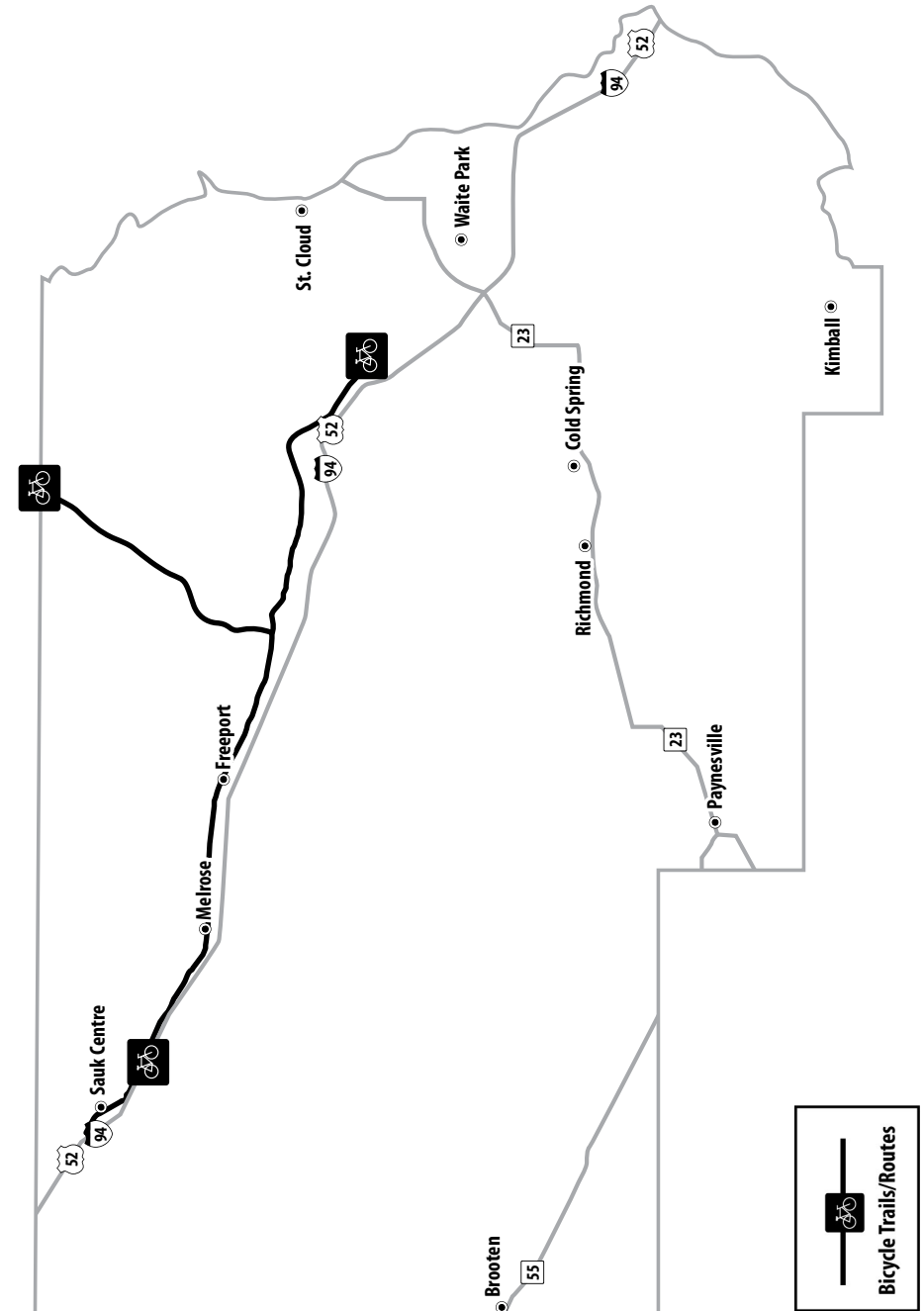
4 Mi. South of St. Cloud on Hwy. 10
3653 32nd St. SE • St. Cloud, MN 56304

Bicycle Safety

- Always wear a properly fitting bike helmet as most serious injuries are to the head.
- Be sure your handlebars, seat and wheels fit snugly.
- Keep your bike in good shape by checking and oiling your chain, making sure your brakes work properly and maintaining your tire pressure.
- Always ride with both hands on the handlebars except when doing turn signals.
- When leaving a driveway, curb or alleyway always stop and check for traffic in both directions.
- Cross only at intersections.
- Use the crosswalk to walk your bike across busy intersections and follow the traffic signals.
- Never ride against traffic. Travel in the same direction as the cars.
- Whenever you can, use bike routes and avoid busy streets.
- Don't ride near parked cars as doors can open and cause accidents.
- Obey all traffic signs and traffic lights.
- When biking with friends, ride in a single file.
- Always pass other bikers or pedestrians on the left and say "On your left!" to make your presence known.
- Always use bicycle hand signals to alert traffic of your changing direction.



Bicycle Trails



ATV Safety

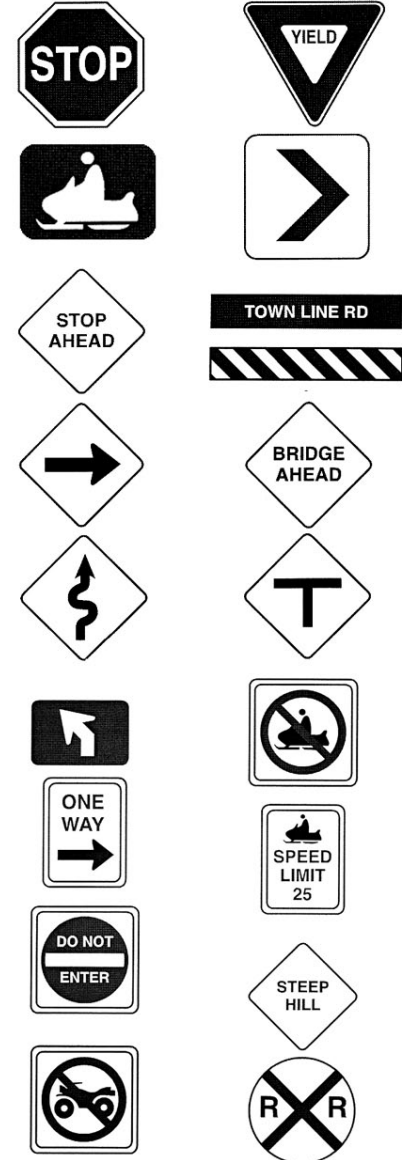
- Read the owner's manual and know your vehicle thoroughly.
- Check your vehicle before you ride.
- Wear protective equipment and clothing.
- Don't lend your vehicle to unskilled riders.
- Supervise young or inexperienced riders.
- Never carry a passenger on vehicles meant for one rider.
- Do not operate under the influence of drugs or alcohol.
- Drive at speeds that are appropriate to trail conditions.
- Stay to the right on trails.
- Stay away from thin ice, open water and wetlands
- Know the weather forecast.
- Make sure headlights and taillights work properly.
- Maintain safe distances between other riders.
- Reduce your speed when riding at night.
- Yield to other motor vehicles and trail users.
- Young or beginning riders are encouraged to take a safety training course.



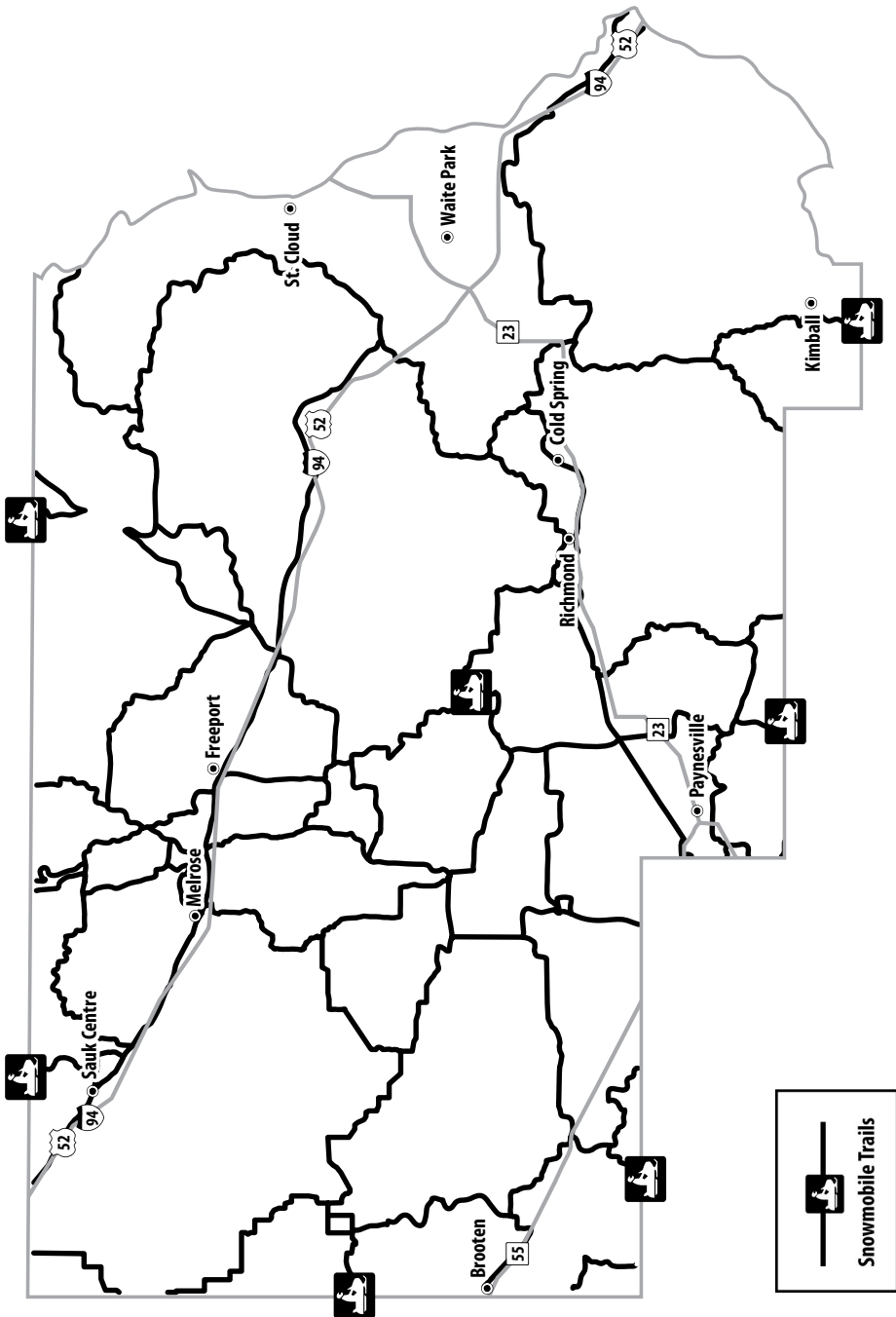
Snowmobile Safety

- Do not consume alcohol or take drugs prior to or during your snowmobile trip. Doing so increases your chances of injury or death.
- Slow down and don't cut to the inside of the trail corners. It's dangerous and illegal.
- If you snowmobile at night, don't override your lights.
- Always use the buddy system. Never ride off alone.
- Drowning is one of the causes of many snowmobile fatalities. Whenever possible, avoid the ice.
- Wear sensible, protective clothing designed for operating a snowmobile.
- Use a full size helmet, goggles, or visor to prevent injuries from twigs, stones, ice chips and other debris.
- Avoid wearing long scarves. They may get caught in moving parts of the snowmobile.
- Know the terrain you are going to ride. If unfamiliar to you, ask someone who has traveled over it before.
- Know the weather forecast, especially the ice and snow conditions.
- Be sure your snowmobile is in top-notch mechanical condition throughout the months of use.
- Familiarize yourself with the snowmobile you are driving. Thoroughly read the manual that accompanies the snowmobile.
- Do not pursue domestic or wild animals. That is not the conduct of a sportsman. Report such violations to the nearest law enforcement officer.

Common Trail Signs

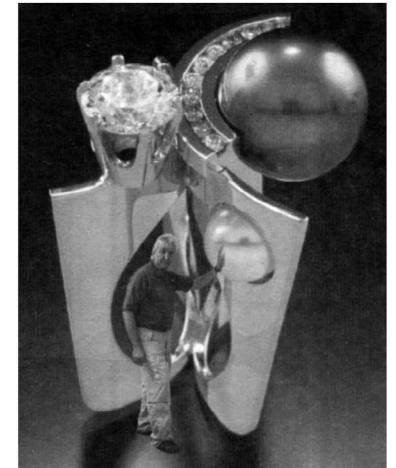


Snowmobile Trails



TRISKO JEWELRY SCULPTURES, LTD.

Creating jewelry images as “Wearable Sculpture” allows me to concentrate first on creating an intriguing form, and then adapting it to wearability. By designing each ring as a unique sculpture, I am able to eliminate the circular form typically used to make rings, and thereby create an ergonomically correct design, which balances the ring on the finger without turning or tipping. The intellectual underpinnings of my work are a Master’s Degree in Sculpture and Metals as well as a degree in Mathematics, enabling my work to reflect an architectural quality,



WEARABLE SCULPTURES

with pieces often standing as sculptures-in-the-round. Most of my jewelry pieces are the result of the “loss wax” method, which enables them to be polished to a more graphic finish and eliminates the solder joints and seams that often appear in fabricated pieces during polishing. I lap most pieces to maintain sleek, sharp lines, and pay close attention to detail and perfection in each piece I create. None of my work is molded. Rather, each design requires a separate wax model and casting. In fact, some pieces utilize several wax components, which are then cast, polished, and assembled. Often, these finished pieces are modular units with strategic alignments that allow my creations to become additive and subtractive sculptures.

My unique images are available in 14K and 18K white or yellow gold. Complementing my work are beautifully individually selected gemstones, custom cut or carefully sorted for size in order to make the math “work” in my architectural style of design. Each finished piece is then copyrighted, marked “14K” or “18K”, and stamped “Trisko”.

Robert Trisko

Robert C. Trisko



Minnesota Vikings Schedule

WK	DATE	OPPONENT	TIME	STATION
1	Sun, Sep 8	@ Lions	12:00 PM	FOX
2	Sun, Sep 15	@ Bears	12:00 PM	FOX
3	Sun, Sep 22	Browns	12:00 PM	CBS
4	Sun, Sep 29	Steelers	12:00 PM	CBS
5	BYE	-	-	-
6	Sun, Oct 13	Panthers	12:00 PM	FOX
7	Mon, Oct 21	@ Giants	7:40 PM	ESPN
8	Sun, Oct 27	Packers	7:30 PM	NBC
9	Sun, Nov 3	@ Cowboys	12:00 PM	FOX
10	Thu, Nov 7	Redskins	7:25 PM	NFL
11	Sun, Nov 17	@ Seahawks	3:25 PM	FOX
12	Sun, Nov 24	@ Packers	12:00 PM	FOX
13	Sun, Dec 1	Bears	12:00 PM	FOX
14	Sun, Dec 8	@ Ravens	12:00 PM	FOX
15	Sun, Dec 15	Eagles	12:00 PM	FOX
16	Sun, Dec 22	@ Bengals	12:00 PM	FOX
17	Sun, Dec 29	Lions	12:00 PM	FOX

**Dates and start times are subject to change.*

⊕ Emergency First-Aid Tips ⊕

FIRST AID FOR CPR & HEART ATTACK

CPR

CPR is to be administered when a person is not breathing or has no pulse. Be quick to act by remembering the A,B,C's: Airway, Breathing & Circulation.

Airway:

Place the person on a firm surface, on their back. Kneel next to the person's neck and shoulders. Open the person's airway by tilting back the head and lifting the chin.

Breathing:

With the head tilted and chin lifted, pinch the nostrils shut and cover the person's mouth with yours. Give two slow breaths.

Circulation:

Find the hand position on the center of the breastbone. Place the heel of your hand on that position, with your other hand on top of the first hand. Use your upper body weight to push down. Give two compressions per second. Compress the chest at a rate equal to 100/minute. Perform 30 compressions at this rate. Repeat until an ambulance arrives.

HEART ATTACK

Symptoms of a heart attack may include any of the following:

- Uncomfortable pressure, fullness or squeezing pain in the center of the chest.
- Expanded pain in the upper abdomen.
- Shortness of breath.
- Pain or numbness in either arms, shoulders, neck, jaw or teeth.
- Dizziness or fainting.
- Nausea and sweating.

If you or someone else may be having a heart attack - follow these steps immediately:

- **DIAL 911**
- **Chew and swallow Aspirin (unless you are allergic/not allowed to)**
- **Take Nitroglycerin (only if prescribed)**
- **Begin CPR if the person is unconscious**

IN AN EMERGENCY, DIAL 911

⊕ *Emergency First-Aid Tips* ⊕

FIRST AID FOR BURNS & CHOKING

BURNS

For minor 1st and 2nd degree burns smaller than 3" in diameter: Cool the Burn. Run cool water over the burned area for 5 minutes, or until the pain diminishes. Never put ice on a burn!

Bandage the burn with sterile gauze:

It is important to use loosely wrapped gauze. This will avoid pressure and the bandage protects blisters. NEVER put lotions, vaseline, ointments or butter on burn. Do not break any blisters, which can cause infection.

Take Aspirin, Ibuprofen, Naproxen or Acetaminophen to relieve pain:

Minor burns usually heal with these basic treatments. Be aware for signs of infection which may include: increased pain, redness, fever, swelling or oozing. If symptoms develop, seek medical help. Avoid tanning the burned area for at least a year. Protect the area with sunscreen outdoors. Avoid giving aspirin to children.

For 3rd degree burns/all major burns - DIAL 911

DO NOT run cold water over large severe burns - this can cause shock.

DO NOT remove burnt clothing.

Check for signs of breathing/coughing/movement.

If there are no signs of breathing begin CPR.

Elevate burned areas above heart level, if possible.

Cover the burn(s) with cool, sterile, moist bandages, towels or cloth.

CHOKING

Most people clutch at their throats when choking, an obvious symbol for help. However, if a person isn't giving that signal, be alert for these indications. Inability to talk, difficulty breathing or noisy breathing, inability to cough forcefully, skin/lips/nails turning blue, loss of consciousness.

The Red Cross recommends a "five-and-five" method for first aid: First give five blows between the person's shoulders with the heel of your hand. Second, perform the Heimlich maneuver (abdominal thrusts) five times. Alternate between five back blows and five abdominal thrusts until the blockage is dislodged.

IN AN EMERGENCY, DIAL 911

⊕ *Emergency First-Aid Tips* ⊕

FIRST AID FOR INSECT BITES/ANAPHYLAXIS & POISON SAFETY

INSECT BITES/ANAPHYLAXIS

Anaphylaxis is a severe allergic reaction from insect bites (latex, food and drug allergies can also cause Anaphylaxis). Typical symptoms include hives, the swelling of lips or eyes, swollen throat, drop in blood pressure, light headedness, confusion, nausea or diarrhea. If someone is having an allergic reaction from an insect bite with these symptoms:

CALL 911.

Administer emergency prescription medication. See if the person is carrying special emergency allergy medicine and give it to them according to the directions.

Loosen tight clothing.

Lay the person down. The person should lay down on their back with feet elevated. Turn them on their side if they are vomiting or bleeding from their mouth to prevent them from choking.

If they are not breathing - administer CPR. Most insect bite reactions are mild and cause no allergic reaction. If stung by a bee, use a straight edged object, like a credit card, to scrape away the stinger. Don't use tweezers - they can pinch more venom out of the stinger. Apply an ice pack to the area and take an over the counter pain reliever.

POISON PREVENTION

Teach your children about poison and how it can look like a food or drink. They should always ask an adult before eating or drinking anything. Have them learn the poison control phone number: 1-800-222-1222 and keep it programmed or posted near all your phones. Here are some prevention tips.

Lock up your poisons and medications. Keep them out of the reach of children, lock them up if possible. Make sure your children understand that medicine is not candy.

Follow directions carefully. Read your labels. Be sure to use and store all poisons and medications properly according to recommendations.

Keep your pets safe from household chemicals, too. Don't allow pets near areas that have just been cleaned with chemicals, such as freshly mopped floors or bleached bathtubs and sinks. Clean up any antifreeze/coolant spills. Pets like the flavor but they can die if they ingest it. Store poisonous foods or plants in areas that your pets cannot access. Call your local emergency veterinary hospital if you believe your pet has been poisoned.

IN AN EMERGENCY, DIAL 911

Safety Tips for Parents & For Kids

PARENTS:

- Teach your kids that an emergency is when you need help from a doctor, a police officer or a firefighter.
- Designate a safe place by your house that a child can go to if they need help right away.
- Have your kids memorize your address and phone numbers. They should also know your full name and where you work.

KIDS:

FIRE SAFETY

- If you or someone else is on fire - remember to STOP, DROP and ROLL. Wrap a blanket on the person to help put out the fire.
- If there is a fire, leave the house as fast as you can! Crawl on the floor to avoid smoke and if the door is hot, don't open it - find another way out.
- Learn all the fire exits in your house. Assign a safe place outside for everyone to meet in case of a fire emergency.

HOME ALONE

- Never tell anyone that you are home alone.
- If someone calls and ask for your mom and dad, tell them "They cannot come to the phone right now, can you please call back later?"
- Do not answer the door, unless it is someone that you know your parents have okay'd them to come over.



Contact us for more information:

15752 County Road 181
Paynesville, MN 56362
3 2 0 - 2 4 3 - 4 5 4 4

office@koronisministries.com
www.koronisministries.com

"Mom, I'm bored!"

Looking for a fun, safe and family-friendly place for your kids to go this summer? Send them to Koronis Ministries in Paynesville!

Koronis Kids Camp, our day camp program, runs for 10 weeks in the summer with different themes and a wide variety of activities to keep kids entertained all summer long. For overnight fun, Koronis Ministries offers week-long overnight camp adventures for all ages and a variety of interests, as well as family camps! We are an ACA and CCCA accredited camp.

Also check out our gift shop for Koronis attire and gifts!



Monticello Village Apartments

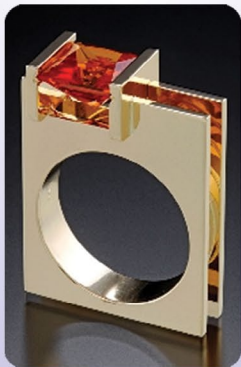
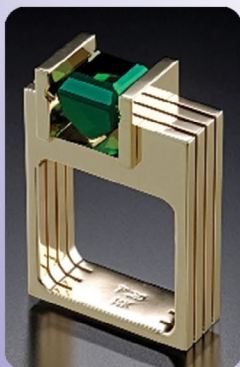
- Spacious Floorplans
- Dog & Cat Friendly
- On-Site Management
- Laundry Facilities
- 24 Hour Emergency Maintenance
- Central Air

1 & 2 Bedroom Apartments
Call for Details!

763-295-2226

Trisko Jewelry Sculptures

by Award Winning Robert C. Trisko



1000's of designs to choose from plus custom-made designs!



14k



18k



Platinum



BY APPOINTMENT 320.253.5346

*For more information on Trisko Jewelry Sculptures,
please see page 25 of the guide.*