

FREE LOCAL AREA GUIDE

Attractions & Events • Park & Rec. Info
Area History • Hunting & Fishing Seasons...

Rusk & Sawyer
Counties, Wisconsin

LincolnMarketing
www.lincolnmarketing.us



SCAN
FOR A
DIGITAL
COPY



EXPANSIVE SHOWROOM
displaying the
latest products...

- **Architectural & Interior Design**
- Benjamin Moore paints and stains
- Cabot stains
- LP Smartside products
- GRK fasteners
- Estimating
- Delivery
- Complete line of builder hardware and tools



Northwest Wisconsin's source
for all your lumber and
building material needs.



**NELSON
LUMBER**
HAYWARD, WI

715-634-4569
16015W Nursery Road
Hayward, WI 54843
Mon.-Fri. 7:00-4:30
Sat. 8:00-12:00
www.nelsonlumber.com

**EVERYTHING
YOU NEED
UNDER
ONE ROOF!**

KraftMaid
KITCHENS FOR THE REAL LIVING ROOM

INTERIOR DESIGN SHOWROOM



CABINETRY, COUNTERTOPS, FLOORING AND WINDOW TREATMENTS

**FLOOR
to CEILING**
INTERIOR DESIGN SHOWROOM

16043 W NURSERY ROAD
HAYWARD, WI • 715-634-4573
WWW.FTCHAYWARD.COM



HOURS: M-F 8:30-4:30 • SAT 9-3 • OTHER HOURS BY APPT.

SPORTSMAN'S HEADQUARTERS

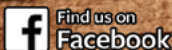
BAIT • TACKLE • GUNS • AMMO • BOWS
LICENSES • DOCKS • LIFTS • CLOTHING
FULL BAR & APPETIZERS

LOCATED ON THE CORNERS OF HWY. 53 & 77
NEXT TO LINK STOP'S A&W • 715-466-2171

JIMMY'S WORLD

Campground & Bar

Full Service Bar



FULL HOOK-UP SITES - Rent by Day, Weekly, Monthly, Yearly

Year-Round Camping • Heated Showerhouse • Laundry Facility

Apartment Rental - Overlooks campground - scenic view of Main Creek.
Rent by day, weekend, weekly or monthly.

(715) 532-0637 or (715) 403-3867

N1745 Rangeline Rd. • Conrath, WI

DESIGNED BY WORLD FAMOUS ARCHITECT, PETE DYE

Rated one of the top 15 golf courses in Wisconsin.

- 18-Hole Championship Golf Course
- Indoor Golf Simulator
- Outings & Event Center
- Dining at Mulligan's Bar & Grill
- Great Food at Dye Hards Sports Bar
- Greatest Pizza Around- We Offer Delivery Call in your Order



SCAN to view
our MENU



*Good Times
Great Friends*

Call the Pro Shop for Tee Times

715-934-4770

14122 W. TRUE NORTH LANE, HAYWARD, WI 54843

www.golfbigfish.com



Quick Stop

715-634-4293

Fuel Convenience Store
Located on Hwys. K & E

- Oil
- ATM
- Deli Sandwiches
- Some Groceries
- Cappuccino
- Hot Chocolate

24 Hour Pay at the Pump
Credit Cards

Store Hours
Mon. - Sun. 6:30 am-9:00 pm
(Summer open til 10:00 pm)



SIREN

7389 Airport Rd.
715-349-5164

IRON RIVER

7885 Old US Hwy 2
715-372-4202

MINONG

Corners of Hwy 53 & 77
715-466-5929
(Next to Sportsmen's
Headquarters)

THREE GREAT LOCATIONS!

TABLE OF CONTENTS

- 2 Local Area Events
- 4 Residential Services
- 6 Rusk County History
- 7 RuskCountyCommunities
- 8 Sawyer County History
- 9-10 SawyerCountyCommunities
- 14-15 Parks & Recreation
- 16-17 Local Area Attractions
- 20 DNR License Centers
- 22 Fishing Seasons
- 24-25 Hunting Seasons
- 30-31 Area Trails



Scan the QR Codes
to go to the individual
county pages.

Rusk County



Sawyer County



This free publication is made possible by the advertisers and other local agencies and may not be reproduced. Please support the local advertisers on this publication. Comments and/or suggestions may be directed to: info@lincolnmarketing.us

View this publication online at www.lincolnmarketing.us

LOCAL AREA EVENTS

JANUARY

Annual Seeley Hills Classic | Hayward
Northland Snowshoe Classic | Cable
Annual Pat's Landing Tipper Tourney | Hayward

FEBRUARY

Annual Hayward Lions Pre-Birkie
American Birkebeiner Weekend | Hayward, Cable
North End Classic | Hayward
Candlelight Ski - Flambeau River State Forest | Winter
Drummon Bar Stool Races | Cable
Weenie Roast Weekend (Feb-March) | Cable

MARCH

Shamrock Shuffle | Hayward
The Fat Bike Birkie | Hayward, Cable
St. Patrick's Day Bash | Bruce, Cable

APRIL

Easter Egg-Stravaganza Hunt | Hayward
Annual Figure Skating Show | Hayward

MAY

Governor's Fishing Opener | Rusk & Sawyer Counties
Treeland Walleye Challenge | Hayward
Annual Lee Bonicatto Memorial Golf Outing | Hayward
Hayward Lions Pancake Breakfast
Winter Area Spring Fling Arts & Crafts Fair
Fishing Has No Boundaries | Hayward
Monday Flea Market (May-Sept) | Hayward
Spring Clean Up Weekend | Bruce
Hungry Bear Gravel | Cable
Rumble on the Lake | Cable

JUNE

Annual Musky Festival | Hayward
Musky Run 5K & Minnow Run | Hayward
Epic Bike Fest | Cable
LCO Farmers Market (Fridays, June-Sept)
Hayward Farmers Market (Mondays, June-Sept)
Music in the Park (Thursdays, June-July) | Ladysmith
Music on Miner (1st Friday, June-Sept)
Annual Tony Daze | Tony
Village Wide Garage Sales | Bruce

JULY

Northland Mardi Gras | Ladysmith
Mardi Gras Arts & Crafts Fair | Ladysmith
Hayward Civic Club 4th of July
July Jubilee | Hayward, Tony
Heart of the North Rodeo | Hayward
Annual LCO Honor the Earth Pow Wow | Hayward
Annual Round Lake Fireworks Celebration
Bruce Blue Hills Festival | Bruce
Annual Health & Wellness Golf Benefit Tourney | Cable
Hicks & Picks | Bruce
Annual World Lumberjack Championships | Hayward
4th of July in Cable
Rusk County Fair Truck & Tractor Pull | Ladysmith

AUGUST

Rusk County Fair | Ladysmith
Rusk County Junior Fair | Ladysmith
Sawyer County Fair | Hayward
Sawyer County Agricultural Fair | Hayward
Annual Ojibwa Community Club Canoe & Kayak Race | Ojibwa
Booster Days in Weyerhaeuser

SEPTEMBER

Annual Exeland Trout Festival
Relay For Life | Hayward
Chippewa Flowage Musky Hunt | Hayward
Apostle Islands Lighthouse Celebration | Hayward
American Birkebeiner Trail Run | Hayward
Hayward Fall Festival
Hayward Library Fall Century Bike Tour
Chequamegon MTB Festival | Cable
Cable Fall Fest
Fall Fest Color Dash | Cable
Village Wide Fall Clean Up | Bruce
Rusk Area Burger Battle | Ladysmith

OCTOBER

Trunk or Treat at Wesleyan Church | Hayward
Annual Stone Lake Cranberry Festival and Parade
Hayward Lakes Chapter of Muskies Fall Fishing Tourney
Leaf it to Rusk Fall Festival | Rusk County
Fun in the Forest ATV Ride | Cable

NOVEMBER

Annual Homespun Holidays | Winter

DECEMBER

Winter Magic | Ladysmith
Community Christmas Celebration | Hayward
New Year's Celebration | Hayward
Ugly Sweater Run | Hayward
Santas Visit | Hayward
Christmas in Bruce
Christmas in Cable
Christmas in Hayward

**For more information on local events throughout Rusk & Sawyer Counties, visit online: www.rusk-county.org or www.sawyercountygov.org.*

**Events are subject to change*

Disc golf or frisbee golf is played a lot like traditional ball golf but instead of hitting a ball with a club into a hole the player throws a frisbee into a basket. Disc golf can be played by just about anyone at any age. It's also a cheap sport to get into. Specialized frisbees for disc golf cost around \$10-\$15 and a lot of courses are free. Playing disc golf is a great way to get out for some exercise, enjoy nature and have some fun.

Disc Golf



RESIDENTIAL SERVICES

RUSK COUNTY

Airport.....	(715)609-1300
Animal Shelter	532-2637
Clerk of Circuit Court	532-2108
County Clerk.....	532-2100
Economic Development	532-2257
Emergency Management	532-2121
Extension	532-2151
Forestry Department	532-2113
Hwy Commissioner/ Department	532-2633
Health & Human Services	532-2299
Land & Water Conservation	532-2165
Recycling	532-2167
Register of Deeds	532-2139
Sheriff	532-2189
Treasurer	532-2105
Veteran Services	532-2299
Zoning	532-2156

SAWYER COUNTY

Airport.....	(715)634-4624
Animal Control	634-5139
Clerk of Circuit Court	634-4887
Coroner	638-3354
District Attorney	634-4097
Extension	634-4839
Forestry Department	634-4846
Health & Human Services	634-4806
Information Technology.....	634-8185
Register of Deeds	634-4867
Sheriff	634-4858
Surveyor/Land Records.....	638-3564
Veterans Services	634-2770



TSU TRANSPORT SERVICES UNLIMITED & TERRY LECKEL TRUCKING INC.

TSU of Shell Lake has immediate full time and part time openings for CDL and Non-CDL drivers (looking to get their CDL license). There are a variety of positions for driving - milk route driver, post office to post office (mail route) driver, nightly auto parts route driver, and freight drivers. **Now Hiring Diesel Mechanics.**

Qualified individuals must be dependable, responsible, flexible, and a team player. Vacation pay, holiday pay, and benefits offered. Must have a clean driving record and pass a pre-employment physical and drug screen. Retired and Semi-Retired applicants encouraged to apply.



Transport Services Unlimited, Inc.
Lisa Glessing, Human Resources
280 Industrial Blvd
Shell Lake, WI 54871
Call 715-468-7222 or stop in
Monday-Friday 8:00am to 3:00pm

FAMILY BUSINESS 35+ YRS M&M Rental "More Than A Rental Store" 715-634-3146

15720 COUNTY HIGHWAY B • HAYWARD • WI 54843
(IDEALLY LOCATED 2 BLOCKS OFF OF HIGHWAY 27
ON COUNTY HIGHWAY B IN HAYWARD.)



HOURS: MONDAY - SATURDAY: 7:30 A.M. - 5:00 P.M. AND SUNDAY 9:00 A.M. - NOON

EQUIPMENT RENTALS 	RECREATIONAL RENTALS 	PARTY RENTALS 	ADDITIONAL SERVICES
------------------------------	---------------------------------	--------------------------	--------------------------------

WE SUPPLY WHAT EVER CUSTOMERS NEED
GO ONLINE TO VIEW SPECIFIC RENTAL ITEMS
AND GET DETAILS & SERVICE INFORMATION
MMRENTAL.COM





In 1884 Rusk County territory was opened for settlement as many pioneers began arriving to work in the logging industry. Nearby rivers were used to transport heavy timber to nearby mills and those that were not part of the logging industry were involved in agriculture. The Soo Line railroad arrived the same year and many homes and businesses were built as a result. Originally known as Gates County, Rusk County was renamed in 1901 after Jeremiah Rusk, a civil war hero, congressman, governor and US Secretary of Agriculture. Ladysmith was then chosen as the county seat. As the area developed, Rusk County has been a haven for recreation enthusiasts. Visitors can enjoy canoeing, boating, fishing, whitewater rafting, horseback riding and skiing. Many golf courses and state parks are located within the county, offering numerous outdoor activities. Today Rusk County is home to approximately 14,389 residents.

CITIES & VILLAGES:

BRUCE – pop. 682
CONRATH – pop. 85
GLEN FLORA – pop. 81
HAWKINS – pop. 167
INGRAM – pop. 68
LADYSMITH (COUNTY SEAT) – 3,339
SHELDON – pop. 218
TONY – pop. 89
WEYERHAEUSER – pop. 309

TOWNS:

ATLANTA – pop. 613
BIG BEND – pop. 377
BIG FALLS – pop. 118
CEDAR RAPIDS – pop. 54
DEWEY – pop. 506
FLAMBEAU – pop. 1,055
GRANT – pop. 715
GROW – pop. 451
HAWKINS – pop. 284
HUBBARD – pop. 183
LAWRENCE – pop. 255
MARSHALL – pop. 648

MURRY – pop. 279
RICHLAND – pop. 200
RUSK – pop. 497
SOUTH FORK – pop. 127
STRICKLAND – pop. 302
STUBBS – pop. 549
THORNAPPLE – pop. 778
TRUE – pop. 277
WASHINGTON – pop. 300
WILKINSON – pop. 78
WILLARD – pop. 605
WILSON – pop. 100
**Populations are approximate.*

BRUCE

Bruce was established in 1884 and later incorporated as a village in 1901. The lumber and agriculture industry became very prosperous for Bruce and attracted settlers to the area. Today Bruce is home to approximately 682 residents.

CONRATH

Conrath was named after the Conrath brothers, Charles, Frank, Felix, Joe and John, who established a logging and sawmill business in the area. The community was originally named Main Creek but was later renamed in 1905 when it was incorporated. Today Conrath is home to approximately 85 residents.

GLEN FLORA

Glen Flora was named after the Roman Goddess Flora, the Goddess of plants and vegetation. Glen Flora was originally named Miller's Siding but was renamed after the post office was established in 1887. Early settlers arrived to the area in 1885. Within a short time, three sawmills were in operation. Populations increased with the arrival of railroads and the lumber industry to the area. Today Glen Flora is home to approximately 81 residents.

HAWKINS

Hawkins was named in honor of M.P. Hawkins, a secretary of the Soo Line Railroad. Early settlers were loggers and were attracted to the abundance of large white pines in the area. Eventually, Hawkins became one of the largest producers of timber in Rusk County. Today Hawkins is home to approximately 284 residents.

LADYSMITH (COUNTY SEAT)

Ladysmith was established where the Soo Line Railroad and the Flambeau River crossed. A logger and lumber entrepreneur who greatly influenced the community by the name of Robert Corbett, originally named the territory "Corbett" then "Warner" in 1891. Many settlers arrived to the region in search of work in the lumber industry and the area began to boom. Those that were not involved in logging were masons, carpenters or farmers. Hotels and businesses were quickly built to accommodate their growing needs. In 1900, Warner was renamed Ladysmith as a tribute to the bride of Charles R. Smith, who owned the Menasha Wooden Company. In 1902, the nearby communities Bruce and Tony contested with Ladysmith for the county seat and there were many town rivalries until Ladysmith was officially declared. Soon, Ladysmith was known as a paper and lumbering town, but by 1915 most of the timber had been exhausted. Residents focused on agriculture as many raised cattle for the dairy industry and later tourism. Today Ladysmith is home to approximately 3,339 residents.

SHELDON

Sheldon began as a logging town with most of its area owned by lumber companies. The community was originally named Fern for the abundance of fern to the area, but was renamed Sheldon in 1906 after an important Wisconsin Central Railroad official. Sheldon was incorporated that same year. After the decline of the lumber industry in the early 1900s, the land in Sheldon was sold and was bought up by immigrants and new settlers to the area. Sheldon was later platted in 1906 and populations increased with the rise of agriculture. Today Sheldon is home to approximately 218 residents.

Sawyer County History



*F*ur traders were among the first settlers in Sawyer County, trading with Chippewa Indians for pelts. The first trading post, Codette's, was established south of Hayward. Due to the plentiful timber, lumber barons were attracted to the area. By the 1870s, A.J. Hayward headed the North Wisconsin Lumber Company which harvested the white pines in Sawyer County. The settlement of Hayward was officially established in 1881, becoming part of Sawyer County in 1883 as the county seat. As the railroad arrived, the lumber and milling business began to boom and tourism grew. When timber resources were exhausted around 1900, tourism became the area's most important industry. Over 200 lakes are nestled within Sawyer County, attracting many outdoor recreational enthusiasts. Fishing camps, cabins, resorts and clubs make up its tourism industry. Today Sawyer County is home to approximately 17,117 residents.

Sawyer County Communities

CITIES & VILLAGES:

COUDERAY – pop. 98
EXELAND – pop. 203
HAYWARD (COUNTY SEAT) – pop. 2,318
RADISSON – pop. 221
WINTER – pop. 339

CENSUS-DESIGNATED

PLACES:

CHIEF LAKE – pop. 625

LITTLE ROUND LAKE – pop. 948
NEW POST – pop. 367
RESERVE – pop. 436

TOWNS:

BASS LAKE – pop. 2,272
COUDERAY – pop. 549
DRAPER – pop. 118
EDGEWATER – pop. 54
HAYWARD – pop. 3,302
HUNTER – pop. 790
LENROOT – pop. 715

MEADOWBROOK – pop. 182
METEOR – pop. 198
OJIBWA – pop. 303
RADISSON – pop. 520
ROUND LAKE – pop. 1,020
SAND LAKE – pop. 788
SPIDER LAKE – pop. 406
WEIRGOR – pop. 400
WINTER – pop. 1,132

**Populations are approximate.*

COUDERAY

Couderay is named after the Lac Courte Oreilles Indian Reservation which is located to the north of the town. Early industry included logging and agriculture. Populations increased with the arrival of railroads and businesses to the area. Today Couderay is home to approximately 549 residents.

EXELAND

Exeland is named after railroad tracks that cross paths located within the town. Early industry included logging, farming and manufacturing. Populations increased steadily with the arrival of the logging industry, railroads and agriculture to the area. Today Exeland is home to approximately 203 residents.



HAYWARD (COUNTY SEAT)

Settlement of the Hayward area began in the 1870s as timber was plentiful. Upon arrival, A.J. Hayward viewed the area as a prime location for a lumber mill. He established the North Wisconsin Lumber Company along the Namekagon River. Dams were built to power the mills and the lumber was used for local businesses and homes, or shipped via the riverways. The community grew around the logging industry and the railroad arrived in 1881, enabling smoother transportation of timber. Hayward was named after its founder and became the county seat in 1883. The first schoolhouse soon followed. As timber resources began to dwindle, logging camps disappeared in the early 1900s. Hayward's industry became focused on tourism and resorts were built to accommodate the needs of vacationers. Hayward is now widely recognized for its recreational appeal with many lakes, trails, camps, and activities to enjoy. Although the logging industry has since declined, residents still celebrate its rich history with the annual World Lumberjack Championships. Today Hayward is home to approximately 3,302 residents.

RADISSON

Radisson was named in honor of Pierre-Esprit Radisson, a French fur trader and explorer who discovered the Hudson Bay. Early industry included logging and agriculture. Populations increased with the arrival of railroads to the area. Today Radisson is home to approximately 520 residents.

WINTER

Winter was named in honor of John Winter, an Omaha Railroad official. It was originally established as a logging community and was named LeBoef. Logging made up most of the industry in Winter until its decline in the early 1900s when agriculture became increasingly profitable. Today Winter is home to approximately 1,132 residents.



GO GREEN

Reduce, Reuse, Recycle

reduce waste, reuse materials & recycle properly



Cut back on single-use plastics, conserve water, drive less



Community/Home Gardens: Really good at absorbing carbon dioxide. Cuts down on pesticides/fertilizers. Also benefits mental health and provides fresh food.

Composting: Decreases the amount of trash in landfills and reduces carbon emissions.

Plant Trees: Planting trees is a classic Earth Day activity.

Local Food: Buy local sustainable food.

Clean-Up Events: Organize or participate in local clean-up efforts.

Upcycle Crafts: Get creative by turning old items into new useful objects.



Tilapia

Baked in Garlic Butter



Simple meal with a *Gourmet* Feel

INGREDIENTS

4 tilapia fillets
4 cloves garlic, minced
4 tablespoons butter, melted
Salt and pepper, to taste
Fresh parsley, chopped
(optional)

INSTRUCTIONS

- 1 Preheat your oven to 375°F (190°C).
- 2 Pat the tilapia fillets dry with paper towels and place them in a baking dish.
- 3 In a small bowl, mix together the minced garlic and melted butter.
- 4 Pour the garlic butter mixture over the tilapia fillets, making sure they are well coated.
- 5 Season the fillets with salt and pepper to taste.
- 6 Bake the tilapia in the preheated oven for 12-15 minutes or until the fish is cooked through and flakes easily with a fork.
- 7 Sprinkle chopped parsley over the top of the cooked tilapia, if desired.
- 8 Serve the tilapia fillets hot, with your favorite side dishes.

*Enjoy your delicious
and healthy tilapia
baked in garlic butter!*

PREP: 35 MIN • TOTAL: 50 MIN

Send in your Favorite Recipe

For a chance to
be published in our
next guide!

info@lincolnmarketing.us



RUSK COUNTY

AUDIE FLOWAGE PARK/ PERCH LAKE CAMPGROUND

Audie Flowage Park features camping, cross-country skiing, boat landing, fishing, mountain biking, picnic tables and swimming area.
W14620 Perch Lake Rd. | Weyerhaeuser |
(715) 532-2113

BRUCE VILLAGE PARK

Bruce Village Park features a ball field, a lighted pavilion and a play area.
750 W Arthur Ave. | Bruce | (715) 868-2185

GLEN FLORA PARK

Glen Flora Park features ball fields, a pavilion and a play area.
Mill St. & 3rd St.

GREENWOOD PARK

Greenwood Park features bird watching, hiking trails, a nature study, a scenic creek and snowshoeing.
Menasha Ave. E & 16 St. N | Ladysmith

HALEY PARK

Haley Park features camping, canoe access, a covered shelter, fishing and a picnic area.
W5592 Sargent Ave. | Sheldon | (715) 452-5730

HAWKINS COMMUNITY PARK

Hawkins Community Park features two halls available for rent, a ball field, horseshoes and a picnic area.
Highway 8 | Hawkins | (715) 585-6322

INGRAM COMMUNITY PARK

Ingram Community Park features a pavilion, a picnic area and a walk-in cooler.
5726 93rd St. | Pleasant Prairie

JOSIE CREEK PARK

Josie Creek Park features archery, camping, fishing, picnic areas, a playground and a shooting range.
N6358 Josie Creek Rd. | Tony | (715) 532-2113

LAKE FLAMBEAU COMMUNITY PARK

Lake Flambeau Community Park features a boat landing, fishing, and a picnic area.
W7176 Lakeview Ln. | Tony | (715) 532-2113

MEMORIAL PARK

Memorial Park features basketball courts, a boat landing, horseshoes, lighted pavilions, a playground, tennis courts and a swimming beach.
Hwy. 8 & River Ave. E | Ladysmith | (715) 532-2655

MURPHY FLOWAGE COUNTY PARK

Murphy Flowage Recreational Park features biking, camping, fishing, hiking and a picnic area.
N7930 County Rd. F | Birchwood | (715) 532-2113

O.J. FALGE PARK

O.J. Falge Park features a fire pit, horseshoes, an ice skating rink, a lighted pavilion, playground equipment and a volleyball court.
Hwy. 27 S | Ladysmith | (715) 532-2655

RIVERSIDE PARK

Riverside Park features hiking trails.
Baker Ave. | Ladysmith | (715) 532-2600

THORNAPPLE RIVER CAMPGROUND

Thornapple River Campground features camping, fishing, golfing, a picnic area, swimming and whitewater paddling.
N6599 WI-27 | Ladysmith | (715) 532-7034

THUT PARK

Thut Park features horseshoes, an ice skating rink and picnic tables.
721 E 12th St. S | Ladysmith | (715) 532-2600

WEYERHAEUSER COMMUNITY PARK

Weyerhaeuser Community Park features a ball field, basketball courts, coolers, a lighted pavilion, a kitchen, picnic areas, a playground, a tennis court, volleyball pits and Pickleball Courts.
N3780 N 2nd St. | Weyerhaeuser | (715) 790-3555

SAWYER COUNTY

BLACK LAKE RECREATION AREA

Black Lake Recreation Area features boating, camping, hiking and a picnic area.

CHEQUAMEGON-NICOLET NATIONAL FOREST

Chequamegon National Forest features ATV riding, biking, boating, camping, fishing, hiking, horseback riding, hunting, motorcycle riding, snowmobiling and swimming.
1170 4th Ave. S | Park Falls | (715) 362-1300

EAGLE LODGE RESORT & CAMPGROUND

Eagle Lodge Resort and Campground features biking, boating, cabin rentals, camping, canoeing, fire pits, fishing, grills, hiking, lawn games, snowmobiling and swimming.
4670 Sweitzer Rd. | Loretta | (715) 266-5433

FLAMBEAU RIVER STATE FOREST

Flambeau River State Forest features canoeing, cross-country skiing, biking, boating, fishing, hiking, rustic camping, a swimming beach and snowmobiling.
W1613 Cty Hwy. W | Winter | (715) 332-5271

HAYWARD KOA HOLIDAY

Hayward KOA features two playgrounds, camping, fun-bikes, a heated pool, mini-golf and a waterslide.
11544 US Hwy. 63 | Hayward | (715) 634-2331

LAKE CHIPPEWA CAMPGROUND

Lake Chippewa Campground features biking, boating, camping, canoeing, hiking, fishing, mini-golf, recreational rentals, swimming and wi-fi.
8380 N County Rd. CC | Hayward | (715) 462-3672

LAKE CHIPPEWA FLOWAGE

Lake Chippewa Flowage features boating, fishing and snowmobiling.
N County Rd. CC | Hayward

NATIONAL FRESH WATER FISHING HALL OF FAME

The National Fresh Water Fishing Hall of Fame features memorabilia and photographs.
10360 Hall of Fame Dr. | Hayward | (715) 634-4440

OJIBWA PARK

Ojibwa Park features camping, cross-country skiing, hiking, a pavilion available for rent and a picnic area.

QUIET LAKES

(GHOST LAKE, LOST LAND LAKE & TEAL LAKE)
Quiet Lakes features boating, fishing, hunting, lodges and resorts.

TUSCOBIA STATE TRAIL

Tuscobia State Trail features ATV riding, biking, bird watching, canoeing, fishing, hiking & snowmobiling.
N15400 Park Lane | Park Falls | (715) 332-5271 Ext103

AREA ATTRACTIONS



BIG FISH GOLF CLUB

14122 W True North Ln. |
Hayward | (715) 934-4770

BRUCE HISTORICAL SOCIETY MUSEUM

115 E River Ave. | Bruce |
(715) 415-4697

CABLE NATURAL HISTORY MUSEUM

13470 Co. Hwy. M | Cable |
(715) 798-3890

CHIPPEWA MORaine ICE AGE UNIT INTERPRETIVE CENTER

13394 Cty. Hwy. M | New
Auburn | (715) 967-2800

CHRISTIE MOUNTAIN

W13755 Co. Rd. O | Bruce |
(715) 868-7800

ED'S MACHINE SHED- WISCONSIN'S

PLOW MUSEUM

998 E 3rd St. N | Ladysmith |
(715) 415-3114

ERIC LAWRY SKATEPARK

10402 N Greenwood Ln.
| Hayward

FRESH WATER FISHING HALL OF FAME

10360 Hall of Fame Dr. |
Hayward | (715) 634-4440

GRINDSTONE CREEK CASINO

13394 W Trepania Rd. |
Hayward | (715) 634-2430

HAYWARD AMUSEMENT CENTER

10439 State Rd. 27 |
Hayward | (715) 634-3510

HAYWARD CINEMA FOUR

10270 Lee Rd. | Hayward |
(715) 634-9293
Movie Hotline:
(715) 634-9411

HAYWARD HAWKS BASEBALL

Hayward | (715) 634-2653

HAYWARD ROD & GUN CLUB

14261 Co. Rd. B | Hayward |
(715) 634-4912

HAYWARD SPORTS CENTER

10475 Sutliff Rd. | Hayward |
(715) 634-4791

JOYFUL JOURNEY ALPACAS & YARN HARMONY GIFTS

13920 WI-77 | Hayward |
(715) 558-0989

KINNAMON SCHOOL VISITOR CENTER & MUSEUM

N8493 N County Hwy. E |
Hayward | (715) 558-0989

LUMBERJACK VILLAGE MINI GOLF

15640 W Co. Hwy. B |
Hayward | (715) 934-5301

MARVELOUS MIKE'S MINI GOLF & ICE CREAM

W10966 U.S. Hwy. 8 | Bruce |
(715) 868-4653

MINER THEATRE

116 Miner Ave. E | Ladysmith
| (715) 532-7131

MUSEUM OF THE AMERICAN BIRKEBEINER

10527 Main St. | Hayward |
(715) 634-5025

OUT OF THE WOODS WINERY

10588 Main St. | Hayward |
(715) 699-1709

PARK THEATRE

15791 US Hwy. 63 | Hayward
| (715) 634-4596

RAILROAD MEMORIES MUSEUM

424 N Front St. | Spooner |
(715) 635-3325

RECLAIMED FLAMBEAU MINE SITE & TRAILS

N4339 State Hwy. 27 |
Ladysmith

RIVERSIDE GOLF & RECREATION

11701 WI-27 | Radisson |
(715) 945-2220

RIVERSIDE LANES

15278 WI-77 | Hayward |
(715) 634-2695

RUSK COUNTY HISTORICAL SOCIETY MUSEUM

828 E 3rd St. N | Ladysmith |
(715) 532-0141

RUSK COUNTY VISITORS CENTER & RAIL DISPLAY

205 W 9th St. S | Ladysmith |
(715) 532-2642

SAWYER COUNTY HISTORICAL MUSEUM

15452 Co. Hwy. B | Hayward
| (715) 634-8053

SCHEER'S LUMBERJACK VILLAGE

15640 W County Rd. B |
Hayward | (715) 634-6923

SEVENWINDS CASINO LODGE & CONVENTION

13767 W Cty. Rd. B |
Hayward | (833) 479-4637

SHERMAN AND RUTH WEISS COMMUNITY LIBRARY

10788 WI-27 #77 | Hayward
| (715) 634-2161

SPIDER LAKE GOLF RESORT

11165 W Elaine Dr. |
Hayward |
(715) 462-3200

TAYLORS AMACOY GOLF CLUB

N2921 WI-40 | Bruce |
(715) 868-6952

THE PARK CENTER

15791 US Hwy. 63 | Hayward
| (715) 634-4596

TOAD HOUSE

711 Lake Ave. W | Ladysmith
| (715) 532-4661

WILDERNESS WALK ZOO

9503 N State Rd. 27 |
Hayward | (715) 699-1442

WINTER GREENHOUSE

W7041 Olmstead Rd. |
Winter | (715) 200-5430

**Seasonal Hours May Apply,
Call Ahead.*





MUSKY COUNTRY CONSTRUCTION LLC

If You Can Dream It... We Can Build It!



Visit Us Online or Call...

MuskyCountryConstruction.com **715-934-9449**

HAYWARD • WISCONSIN



COME AND HAVE A SEAT AT GOOCH'S 2 BAR & GRILL

BRING THE FAMILY!

WIDE SELECTION SANDWICHES & SALADS & DINNER ENTREES

FAMOUS FOR BROASTED CHICKEN. EAT HERE OR GRAB A BUCKET TO GO!



FRIDAY FISH FRY BEER-BATTERED OR BROASTED COD.



LOCATED 3 MILES NORTH OF BOULDER JUNCTION ON HIGHWAY M.

6215 County Hwy M • Boulder Junction • WI 54512 • **715-385-9288**

QUALITY IS OUR REPUTATION

As a boy I started learning trade skills from my grandfather helping him build my first deck at age 9. As a young man we moved on to building his lake home up north in Barnes WI, and I helped my step dad shingle roofs in the summers. Years to come, once I became an adult after the footings of these skills were set, this soon became my career. Growing up in Hayward WI since the late 80s, and having over 25 years experience in residential construction trades - I know why most people come to the area and enjoy having a part in this. I am an avid outdoorsman and an experienced carpenter. I know the area well and the beauty within that everyone here strives for.

Our mission is to provide the quality and utmost craftsmanship; and dependability of products on all of our projects - while remaining affordable and communicative with our customers; providing information, & options to fit their needs through-out each and every project (big or small), and providing a suitable income to hard-working American employees and their families, as well as supporting other trades and businesses in our local economy.



We have been in business for 13 years. We would like to continue serving the vacation heartland, known as the Hayward Lakes Area for many years to come. Building for a better future improving area homes and vacation properties. Preserving the memories that so many people come here to create from the past, present and future for generations to come. We have had countless satisfied customers over the years, and would like to continue this through hard work, prestigious planning and well-managed business practices. Quality is our reputation.

Thank you --- Daniel Henley



You can purchase hunting and fishing licenses, cross-country ski passes and snowmobile trail stickers through the Electronic License System. Online: www.dnr.wi.gov, Toll Free: 1 (888) 936-7463
Or visit one of the ELS agents available throughout Rusk & Sawyer Counties:

EXELAND

EXELAND DEPOT

11033 W State Hwy. 48 | Exeland | (715) 943-2929

GLEN FLORA

EDMING OIL

W4274 Hwy. 8 | Glen Flora | (715) 322-5292

HAYWARD

CIRCLE K 2746028

15752 US Hwy. 63 | Hayward | (715) 634-4221

CIRCLE K 2746036

10478 State Rd. 27 | Hayward | (715) 634-4388

HAPPY HOOKER BAIT & TACKLE

12272 N Upper A Rd. | Hayward | (715) 462-3984

HAYWARD BAIT AND BOTTLE SHOPPE INC.

15737 Davis Ave. | Hayward | (715) 634-2921

HAYWARD POWER SPORTS

12305 W State Rd. 77 | Hayward | (715) 462-3674

HAWKINS LOG CABIN STORE

14293 W Cty. Rd. K | Hayward | (715) 699-1370

L & M FLEET SUPPLY

10680 State Hwy. 27/77 | Hayward | (715) 934-2300

OUTDOOR CREATIONS

113951 Chippewa Trail | Hayward | (715) 634-1044

WALMART STORE #3245

15594 State Hwy. 77 | Hayward | (715) 634-8228

LADYSMITH

CIRCLE K 2746176

605 Lake Ave. W | Ladysmith | (715) 532-7678

LADYSMITH ACE HOME CENTER

503 Lake Ave. W | Ladysmith | (715) 532-3351

WALMART SUPERCENTER #4281

800 W 10th St. S | Ladysmith | (715) 532-2039

RADISSON

POPS MART FUELS LLC

10592 W Omaha St. | Radisson | (715) 945-2771

SHELDON

SKABROUDS STORE SHELDON

W5541 Main St. | Sheldon | (715) 452-5161

STONE LAKE

POPS MART FUELS LLC

6317 N Hwy. 27 | Stone Lake | (715) 865-5110

STONE LAKE BAIT & TACKLE

16869 W Main St. | Stone Lake | (715) 865-2201

TONY

THE TONY DEPOT

W6164 Hwy. 8 | Tony | (715) 532-4834

WEYERHAEUSER

WEYERHAEUSER C-STORE

W14336 US-8 | Weyerhaeuser | (715) 353-2612

WINTER

JMG PETROLEUM LLC - BP

6574 W State Rd. 70 | Winter | (715) 266-7676

YOUR Help is NEEDED!

Do
NOT
Transport
Invasive:
• Fish
• Invertebrates
• Aquatic Plants



CLEAN. DRAIN. DISPOSE.

KNOW THE LAW! YOU MAY NOT...

- TRANSPORT WATERCRAFT WITHOUT REMOVING THE DRAIN PLUG.
- ARRIVE AT LAKE ACCESS WITH DRAIN PLUG IN PLACE.
- TRANSPORT AQUATIC PLANTS, ZEBRA MUSSELS, OR OTHER PROHIBITED SPECIES ON ANY ROADWAY.
- LAUNCH A WATERCRAFT WITH PROHIBITED SPECIES ATTACHED.
- TRANSPORT WATER FROM LAKES OR RIVERS.
- RELEASE BAIT INTO THE WATER.

FISHING SEASONS



2024- 2025 FISH- ING SEASON DATES

(Effective Date: April 1, 2024; Dates Inclusive)

Early Inland Trout (catch & release)
January 6 (5 a.m.) - May 3

General Inland Trout
May 4 (5 a.m.) - October 15

General Inland Fishing
May 4 - March 2, 2025

Largemouth Bass Northern Zone Harvest
May 4 - March 2, 2025

Smallmouth Bass Northern Zone Harvest
June 15 - March 2, 2025

Large And Smallmouth Bass Southern Zone Harvest
May 4 - March 2, 2025

Large And Smallmouth Bass Catch And Release
At all other times of the year.

Musky Northern Zone Harvest
May 25 - December 31

Musky Southern Zone Harvest
May 4 - December 31

Northern Pike
May 4 - March 2, 2025

Walleye
May 4 - March 2, 2025

Lake Sturgeon
February 10 - February 25 (spearing)
September 7 to September 30 (hook-and-line)

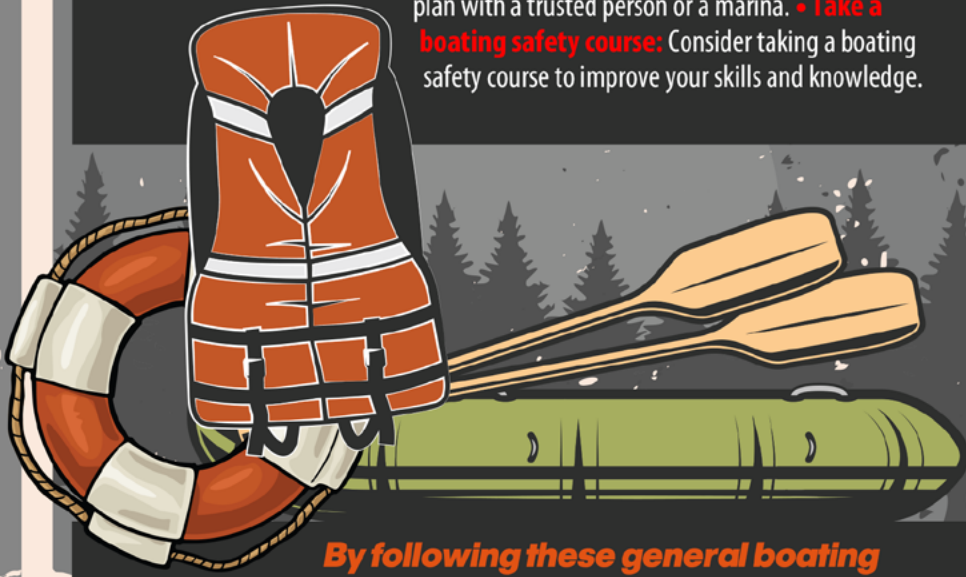
Free Fishing Weekends
Jan. 20-21, 2024
June 1-2, 2024

**Contact the Wisconsin DNR for more information on specific fishing zones and dates:
1 (888) 936-7463
<https://dnr.wisconsin.gov>
or scan the QR code.*



Boating safety is critical for anyone who operates a boat or spends time on the water. Here are some general boating safety tips to keep in mind:

- **Wear a life jacket:** Always wear a life jacket while boating. Make sure the life jacket is appropriate for your weight and is U.S. Coast Guard approved.
- **Know the weather:** Check the weather forecast before you go boating and keep an eye on changing conditions. If you notice darkening clouds, rough winds or sudden drops in temperature, get off the water.
- **Use navigation aids:** Use navigation aids like buoys and beacons to help you navigate safely.
- **Maintain your boat:** Keep your boat well-maintained and in good working condition. Make sure all safety equipment is in good condition and functioning properly.
- **Avoid alcohol:** Do not drink alcohol while operating a boat. It is illegal and increases the likelihood of accidents.
- **Watch your speed:** Observe speed limits and maintain a safe speed based on conditions. Remember, slower speeds may be necessary in crowded areas or in inclement weather.
- **Be aware of other boats:** Watch for other boats and be aware of their movements. Always assume other boaters may not see you.
- **Know the rules:** Learn and follow boating safety laws and regulations. This includes rules for navigation, safety equipment, and right-of-way.
- **File a float plan:** Always let someone know where you are going and when you plan to return. File a float plan with a trusted person or a marina.
- **Take a boating safety course:** Consider taking a boating safety course to improve your skills and knowledge.



By following these general boating safety tips, you can reduce the likelihood of accidents and enjoy a safe and enjoyable time on the water.

HUNTING SEASONS

**Dates are subject to change please contact your local DNR office for specific hunting and trapping zone regulations. For general information on firearm safety training call: 1 (888) 936-7463.*

DEER

Archery and Crossbow

Sept. 14 – Jan. 5, 2025

Archery and Crossbow *Metro Sub-units only*

Sept. 14 – Jan. 31, 2025

Gun hunt for hunters with disabilities: This is not a statewide season. ~ Oct. 5 – 13

Youth deer hunt ~ Oct. 5 – 6

Gun ~ Nov. 23 – Dec. 1

Muzzleloader ~ Dec. 2 – 11

December 4-day antlerless hunt ~

Dec. 12 – 15

Antlerless-only Holiday Hunt ~

Dec. 24 – Jan. 1, 2025*

*Only in valid farmland units. Please see deer regulations booklet for valid units.

BEAR

Zones A, B, D: where dogs are permitted

Oct. 2 – 8

with aid of dogs only

Sept. 11 – Oct. 1

with aid of dogs

with aid of bait

with all other legal methods

Sept. 4 – 10

with aid of bait

with all other legal methods not using dogs

Zones C, E, F: where dogs are not permitted

Sept. 4 – Oct. 8

with aid of bait

with all other legal methods not using dogs



SMALL MAMMALS

Cottontail rabbit

Northern zone ~ Sept. 14 – Feb. 28, 2025

Southern zone ~ Oct. 19 (9 a.m.) – Feb. 28, 2025

Milwaukee County ~ Year-round

Squirrels (gray and fox)

Statewide ~ Sept. 14 – Feb. 28, 2025

GAME BIRDS

Crow

Statewide Nov. 23 – March 26, 2025

Pheasant

Statewide ~ Oct. 19 (9 a.m.) – Jan. 5, 2025

Bobwhite quail

Statewide ~ Oct. 19 (9 a.m.) – Dec. 11

Ruffed grouse

Zone A ~ Sept. 14 – Jan. 5, 2025

Zone Oct. 19 – Dec. 8

Sharp-tailed grouse ~ Season is under review.

Hungarian partridge

Statewide ~ Oct. 19 (9 a.m.) – Jan. 5, 2025

(Closed in Clark, Marathon and Taylor counties)

FURBEARERS

Coyote

Hunting ~ Year-round

Trapping ~ Oct. 19 – Feb. 15, 2025

Fox, red and gray

Hunting & Trapping ~ Oct. 19 – Feb. 15, 2025

Beaver

Trapping

Zone A (northwest) Nov. 2 – April 30, 2025

Zone B (northeast) Nov. 2 – April 30, 2025

Zone C (south) Nov. 2 – March 31, 2025

Zone D (Mississippi River) Dec. 2 – March 15, 2025

Muskrat & Mink

Trapping

Northern Zone Oct. 19 – April 15, 2025

Central Zone Oct. 26 – March 22, 2025

Southern Zone Nov. 2 – March 15, 2025

Mississippi River zone Nov. 11 – March 9, 2025

Bobcat

Trapping

North and South zones, Period 1 Oct. 19 – Dec. 25

North and South zones, Period 2 Dec. 26 – Jan. 31, 2025

Fisher

Trapping

North and South Zones Oct. 19 – Jan. 5, 2025

Otter

Trapping

North zone Nov. 2 – April 30, 2025

South zone Nov. 2 – March 31, 2025

Raccoon

Trapping

Resident Oct. 19 – Feb. 15, 2025

Nonresident Nov. 2 – Feb. 15, 2025

Opossum, skunk, weasel, snowshoe hare and woodchuck

~ No season limits, bag limits, size limits or possession limits, but a license is required.

WILD TURKEY

2024 Youth turkey hunt ~ April 13 – 14

Spring 2024

Period A April 17 – 23

Period B April 24 – 30

Period C May 1 – 7

Period D May 8 – 14

Period E May 15 – 21

Period F May 22 – 28

Fall 2024

Statewide Sept. 14 – Nov. 22

Zones 1 - 5 ~ Nov. 23 – Jan. 5, 2025



*For the latest season dates. Check the WI DNR website, <https://dnr.wisconsin.gov> or scan the QR code.



THE WORLD'S TRIBUTE TO FRESH WATER SPORT FISHING

Over 100,000 Rare & Historical Artifacts On Display

Fresh Water Fishing
HALL OF FAME



"It's like a peek
into GrandDad's
old tackle box!"

OPEN 7 days a week (April 15 - October 31) at 9:30 am
JCT. HWYS. B & 27 • HAYWARD • WI
freshwater-fishing.org • 715-634-4440



BOOST
YOUR
BUSINESS

CALL
NOW

651-788-9323

LincolnMarketing
www.lincolnmktg.us SINCE 1984

The Fresh Water Fishing Hall of Fame

located in Hayward, Wisconsin on beautiful Lake Hayward is an organization which was founded in 1960. We were incorporated as a 501(c)3 non-profit in 1970 for the purpose of developing and maintaining a location to preserve and display the history and heritage of the sport of fresh water angling. We are North America's Shrine to Anglers.

As stated above, our core mission is the development and maintenance of the Fresh Water Fishing Hall of Fame to display the historical artifacts of fresh water sportfishing. Additionally, we conduct and maintain a program for the recognition of persons, organizations and institutions who have made significant and lasting contributions to the sport and heritage of fresh water sport fishing. In other words, we are fresh water sportfishing's Hall of Fame. We also conduct and maintain a program for qualifying, compiling and publishing all fresh water sportfishing records. Furthermore, we maintain a library that disseminates information and acts as the clearinghouse for historical and contemporary publications for the fresh water sportfishing industry.

Our grounds sit on 6 beautifully landscaped acres strategically located in the City of Hayward in northwest Wisconsin. We attract about 50,000 visitors each season from April 15th to October 31st (7 days a week). Our off-season office hours are maintained 5 days a week (Monday through Friday), from November 1st through April 14th, during which museum maintenance, display work & fund raising is performed.

Our iconic walk-through Big Musky (45 feet tall and 180 feet long) is situated strategically amid our 80,000-gallon reflection pond. Its gaping jaws serve as an observation deck and will accommodate about 20 people. It is easily the most photographed structure in all of Wisconsin.

Our over 100,000 historical artifacts are stored in our four-building connected complex encompassing about 25,000 square feet of floor space. Our displays include, but are not limited to, all of the accouterments of fresh water angling. These artifacts comprise vintage rods, reels, fishing lures, tackle boxes, outboard motors and over 400 mounted fish of over 100 different species. Also on our grounds are over 40 gardens, 8 large fish statues (not counting the Big Musky) and a playground for the kids.

Supporting memberships to our organization are available on our website at www.freshwater-fishing.org (click on Become a Member near the bottom of our homepage). We have several levels of support, but they all include an annual family pass to our museum grounds and our quarterly full-color magazine *The Splash*.

During our visitor season we open 7 days a week at 9:30am; and close at 4pm. There is a nominal charge for admission, which is good for the entire day. Our phone number is 1.715.634.4440.

By Emmett A. Brown, Jr., Executive Director,
Fresh Water Fishing Hall of Fame, Inc.

Fresh Water Fishing
HALL OF FAME



(Big Musky)



Be Aware of your Surroundings

- Always wear a properly fitting bike helmet as most serious injuries are to the head.
- Be sure your handlebars, seat and wheels fit snugly.
- Keep your bike in good shape by checking and oiling your chain, making sure your brakes work properly and maintaining your tire pressure.
- Always ride with both hands on the handlebars except when doing turn signals.
- When leaving a driveway, curb or alleyway always stop and check for traffic in both directions.
- Cross only at intersections.
- Use the crosswalk to walk your bike across busy intersections and follow the traffic signals.
- Never ride against traffic. Travel in the same direction as the cars.
- Whenever you can, use bike routes and avoid busy streets.
- Don't ride near parked cars as doors can open and cause accidents.
- Obey all traffic signs and traffic lights.
- When biking with friends, ride in a single file.
- Always pass other bikers or pedestrians on the left and say "On your left!" to make your presence known.
- Always use bicycle hand signals to alert traffic of your changing direction.

Bicycle Hand Signals



Drink lots of Water!



Know Your ATV

Read the owner's manual

and know your vehicle thoroughly.

- Check your vehicle before you ride.
- Wear protective equipment and clothing.
- Don't lend your vehicle to unskilled riders.
- Supervise young or inexperienced riders.
- Never carry a passenger on vehicles meant for one rider.
- Do not operate under the influence of drugs or alcohol.
- Drive at speeds that are appropriate to trail conditions.
- Stay to the right on trails.
- Stay away from thin ice, open water and wetlands.
- Know the weather forecast.
- Make sure headlights and taillights work properly.
- Maintain safe distances between other riders.
- Reduce your speed when riding at night.
- Yield to other motor vehicles and trail users.
- Young or beginning riders are encouraged to take a safety training course.

SNOWMOBILE SAFETY

Snowmobile Hand Signals

Communication is an essential part of safe riding. Hand signals are a practical way to communicate between other riders and traffic. Be sure to give easy to see and clear hand signals when snowmobiling. Hand signals should never be subtle, but always deliberate.

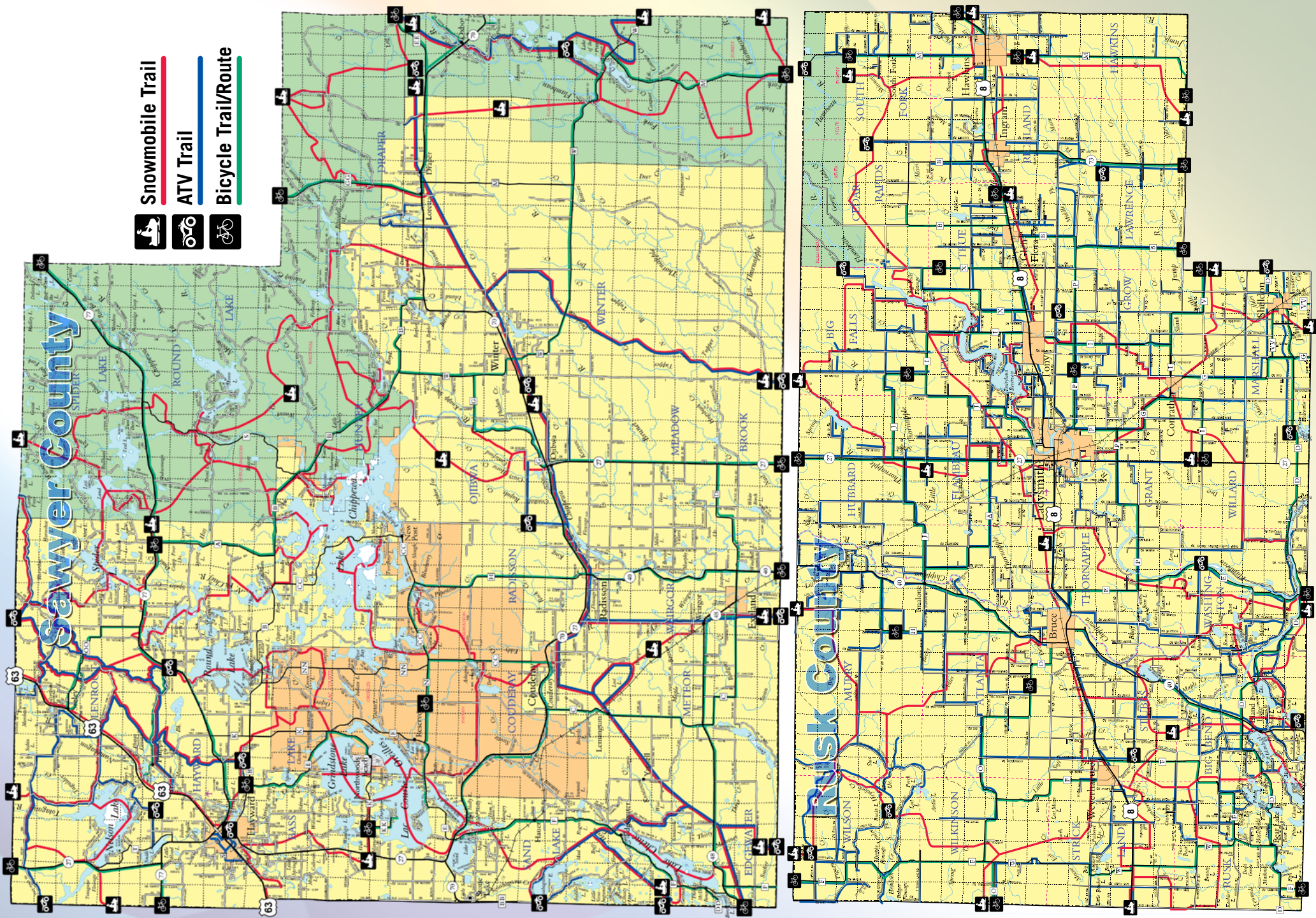


PRIVATE PROPERTY
NO TRESPASSING

Please respect private property and no trespassing signs. Stay on trails. Exercise extreme caution on all lakes and streams. Obey all state and local laws and ordinances. Do not operate snowmobiles/ATV's on county roads or state highways.

- Do not consume alcohol or take drugs prior to or during your snowmobile trip. Doing so increases your chances of injury or death.
- Slow down and don't cut to the inside of the trail corners. It's dangerous and illegal.
- If you snowmobile at night, don't override your lights.
- Always use the buddy system. Never ride off alone.
- Drowning is one of the causes of many snowmobile fatalities. Whenever possible, avoid the ice.
- Wear sensible, protective clothing designed for operating a snowmobile.
- Use a full size helmet, goggles, or visor to prevent injuries from twigs, stones, ice chips and other debris.
- Avoid wearing long scarves. They may get caught in moving parts of the snowmobile.
- Know the terrain you are going to ride. If unfamiliar to you, ask someone who has traveled over it before.
- Know the weather forecast, especially the ice and snow conditions.
- Be sure your snowmobile is in top-notch mechanical condition throughout the months of use.
- Familiarize yourself with the snowmobile you are driving. Thoroughly read the manual that accompanies the snowmobile.
- Do not pursue domestic or wild animals. That is not the conduct of a sportsman. Report such violations to the nearest law enforcement officer.

AREA TRAILS



Health Benefits of the Outdoors

Spending time in nature offers numerous benefits for physical, mental, and emotional well-being.

Stress Reduction: Nature has a calming effect on the mind and body, helping to reduce stress levels. The peaceful surroundings, fresh air, and natural beauty can lower cortisol levels, decrease heart rate, and promote relaxation.

Improved Mental Health: Being in nature is associated with improved mood and mental health. Studies have shown that spending time outdoors can reduce symptoms of anxiety, depression, and other mental health disorders. Nature provides a sense of tranquility and perspective, which can help alleviate negative thoughts and emotions.

Increased Physical Activity: Nature encourages physical activity, whether it's hiking, biking, walking, or simply exploring outdoor spaces. Engaging in outdoor activities promotes exercise, which is essential for maintaining physical health and fitness. Additionally, being in nature often involves exposure to sunlight, which helps the body produce vitamin D and supports overall well-being.

Enhanced Creativity & Cognitive Function: Nature stimulates creativity and cognitive function. Research suggests that spending time in natural environments can improve problem-solving skills, boost creativity, and enhance concentration and focus. Nature provides a rich sensory experience that activates different parts of the brain, fostering cognitive development and innovation.

Connection with the Environment: Spending time in nature fosters a deeper connection with the environment and promotes environmental stewardship. When people experience the beauty and wonder of nature firsthand, they are more likely to develop a sense of appreciation and respect for the natural world. This connection can lead to greater awareness of environmental issues and a desire to protect and preserve natural habitats for future generations.

Overall, being in nature offers a multitude of benefits for both physical and mental well-being, making it essential for maintaining a healthy and balanced lifestyle.



The Best of Wisconsin Outdoors

Fishing:
Bass: Pelican Lake, Oneida County
Walleye: Lake Winnebago, Winnebago County
Muskellunge: Big Saint Germain Lake, Vilas County
Northern Pike: Lake Mendota, Dane County

Hiking:
Devil's Lake State Park, Sauk County
Ice Age Trail, Throughout Wisconsin
Amnicon Falls State Park, Douglas County
Copper Falls State Park, Ashland County

Golf Courses:
Whistling Straits, Sheboygan County
Milwaukee Country Club, Milwaukee County
Erin Hills, Washington County
Blackwolf Run, Sheboygan County

Mountain Biking:
Rock Lake, Bayfield County
Hickory Ridge, Chippewa County
Alpine Valley, Walworth County
Pleasant View, Dane County

Skiing:
Bruce Mound, Clark County
Granite Peak, Marathon County
Christie Mountain, Rusk County
Cascade Mountain, Columbia County

So, You have decided to get a pet... NOW WHAT??

Commitment and Time: Owning a pet is a long-term commitment. Before bringing a pet home, consider your lifestyle and ensure you have enough time to spend with your pet. Dogs, cats, and many other animals require attention, exercise, and mental stimulation.

Choose the Right Pet for Your Lifestyle: Different pets have varying needs, temperaments, and activity levels. Research and select a pet that fits well with your lifestyle, living situation, and family dynamics. Whether you choose a dog, cat, bird, fish, or any other animal, make sure you can provide for its specific needs.

Proper Nutrition: Feed your pet a balanced and nutritious diet suitable for their species and age. Consult with a veterinarian to determine the best food options for your pet's health and well-being.

Regular Exercise: Most pets need regular physical activity to stay healthy and happy. Engage in playtime and exercise with your pet daily, as it helps prevent obesity and provides mental stimulation.

Routine Veterinary Care: Schedule regular check-ups with a veterinarian to monitor your pet's health, get necessary vaccinations, and address any concerns. Early detection of health issues can often lead to better outcomes.

Spaying/Neutering: Consider spaying or neutering your pet if you don't plan on breeding. This helps control the pet population and can have health benefits for your pet.

Training and Socialization: Properly train your pet to follow basic commands and have good manners. Socialize them with other animals and people from a young age to prevent behavioral issues later on.

Provide a Safe Environment: Ensure that your home and yard are safe for your pet. Remove hazards, keep toxic substances out of reach, and provide appropriate shelter from extreme weather conditions.

Grooming: Regular grooming is essential for most pets. Brush their fur, trim nails, and clean their ears as needed to keep them comfortable and healthy.

Identification and Microchipping: Keep identification tags with your current contact information on your pet's collar. Consider microchipping your pet as an extra measure to ensure they can be identified if lost.

Love and Attention: Pets thrive on love and attention from their owners. Spend quality time with your pet, provide affection, and build a strong bond.

Respect and Understanding: Learn to understand your pet's body language and behavior. Respect their boundaries and feelings, and avoid forcing them into uncomfortable situations.



Patience and Forgiveness: Pets, especially young ones, can be mischievous or have accidents. Be patient with them during the training process and forgive any mistakes they make along the way.

Emergency Preparedness: Have a plan in place for emergencies, including natural disasters. Know how to evacuate with your pet safely if needed.

If you have just rescued / adopted a new fur baby, please it is important to remember the 3-3-3 RULE:

3 Days:

In the first 3 days being in its new home, they will be feeling overwhelmed, scared & unsure of what is going on. They may also be uncomfortable being "themselves", and may not want to eat or drink. They may want to "shut down" or hide under a bed or in a crate, and they will test boundaries.

3 Weeks:

At this point, they may be a lot more comfortable & settling in. Learning a new routine can be overwhelming, so please be patient. By now they may have figured out the new environment & accepted that this may be their FURever home. Their personality traits will start to show, as well as any behavior issue that may be present.

3 Months:

For most fur babies, 3 months is enough time to finally be comfortable and begin to build trust and a true bond. A sense of security may be present & a set routine will help this process.

Please know that this is not the rule with every rescued or adopted pet, as some may need 6 months to a year to adjust & adapt, depending on MANY factors. Age of animal, what type of an environment did they come from?

Ladysmith Leash-Free Dog Park

E 3rd St. S & Phillips Ave. E |
Ladysmith | (715) 532-2637

Rusk County Animal Shelter Dog Park

200 Doughty Rd. |
Ladysmith | (715)
532-263

Bark Parks North- woods Humane Society

10812 N O'Brien Hill
Rd. | Hayward

DOG PARKS

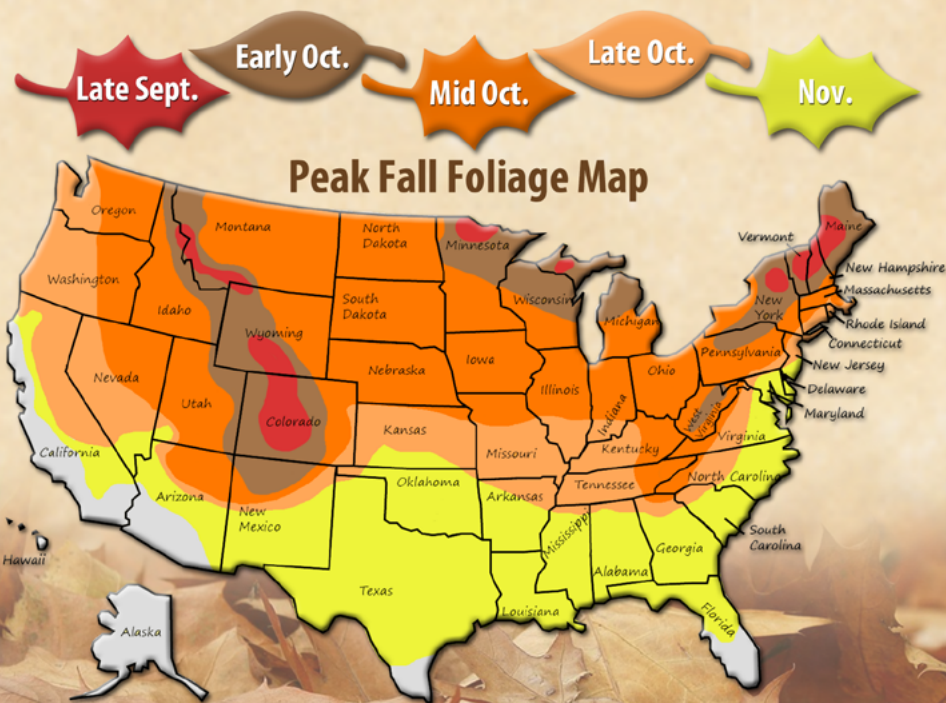


Autumn Foliage



In the spring and summer tree leaves are green, producing nutrients for the tree. The green color comes from cells in the leaves containing chlorophyll. Chlorophyll absorbs sunlight for energy to transform carbon dioxide and water into carbohydrates.

In the fall, shortening days and cooling temperatures makes the leaves stop producing nutrients. The chlorophyll starts to break down and the green color disappears. The different colors of each tree and tree type are due to the mixing of varying amounts of the chlorophyll residue and other pigments in the leaf during the fall season.



FIND YOUR FORTUNE

I did!

Bet on FUN at St. Croix Casinos!

Try your luck on Slots, Blackjack, Poker, Craps, Roulette and **SPORTS BETTING!** Bet on your favorite team, sport or event! Enjoy a drink and a meal while watching your team on one of our multiple screens! We're waiting to take your bets!

Visit GoPlayWin.com for more information.
No table games offered at our Hertel location.



The Book SPORTS BETTING & RACE
The Book located in St. Croix Casino Turtle Lake



RED ZONE SPORTS BETTING & RACE
Red Zone located in St. Croix Casino Danbury



TURTLE LAKE CASINO 1.800.846.8946 | DANBURY CASINO 1.800.238.8946 | HERTEL CASINO 715.349.5658