

**UGA**  
UNION GATEWAY AGENCY  
302 3rd Ave NW - Sidney MT 58270  
Phone: 406-488-4366 Fax: 406-430-4433  
www.uniongateway.com

Your local office representing all of your health and life needs

**vsp**  
Individual, Family, and Business  
Dental & Vision Plans

**Aflac**  
Medicare Supplements  
Plans & Medicare Part D (Drug) Plans

**PacificSource**  
Short & Long Term Disability  
Long Term Care

**Blue Cross**  
BlueShield of Montana

Let us make things simple for you!

- Hiking/Walking Trail**
- Disc Golf Course**
- Lewis & Clark Trail**



*Advertisers Appreciate It!*

Tell Them You Saw Them  
On The Map!

**LincolnMarketing**  
www.lincolnmarketing.us

**Bus Service from 7am-6pm  
Monday through Friday**

**All rides are FREE**  
(subject to availability)

**Richland County TRANSPORTATION**

Schedule your ride with the **RCTS app** (available on App Store & Google Play), on our website: [rcts.richland.org](http://rcts.richland.org) or by calling **(406) 433-RIDE (7433)**

**TOBACCO GARDENS RESORT AND MARINA**

LOCATED IN THE HEART OF BEAUTIFUL LAKE SAKAKAWA AND THE MISSOURI RIVER SYSTEM, TOBACCO GARDENS IS THE ULTIMATE PLACE FOR CAMPING, FISHING, HUNTING, HIKING OR JUST SITTING BY THE BAY ENJOYING THE SCENERY.

- ELECTRIC & PRIMITIVE CAMPLITES
- OFF/ON WATER GAS AVAILABLE
- FULL RESTAURANT & CONVENIENCE STORE
- BEER AND WINE ON/OFF SALE
- BAIT TACKLE MARINE ACC.
- FISH CLEANING FACILITY
- BATHROOMS & SHOWERS
- CEMENT BOAT RAMPS
- MODERN BATHROOMS & SHOWER HOUSE
- WHERE YOU CAN DO AS LITTLE OR AS MUCH AS YOU WANT!

TOBACCO GARDENS IS LOCATED 2 MILES EAST OF WATFORD CITY ON ND HIGHWAY 23, THEN 25 MILES NORTH WEST (AFTER 1806).

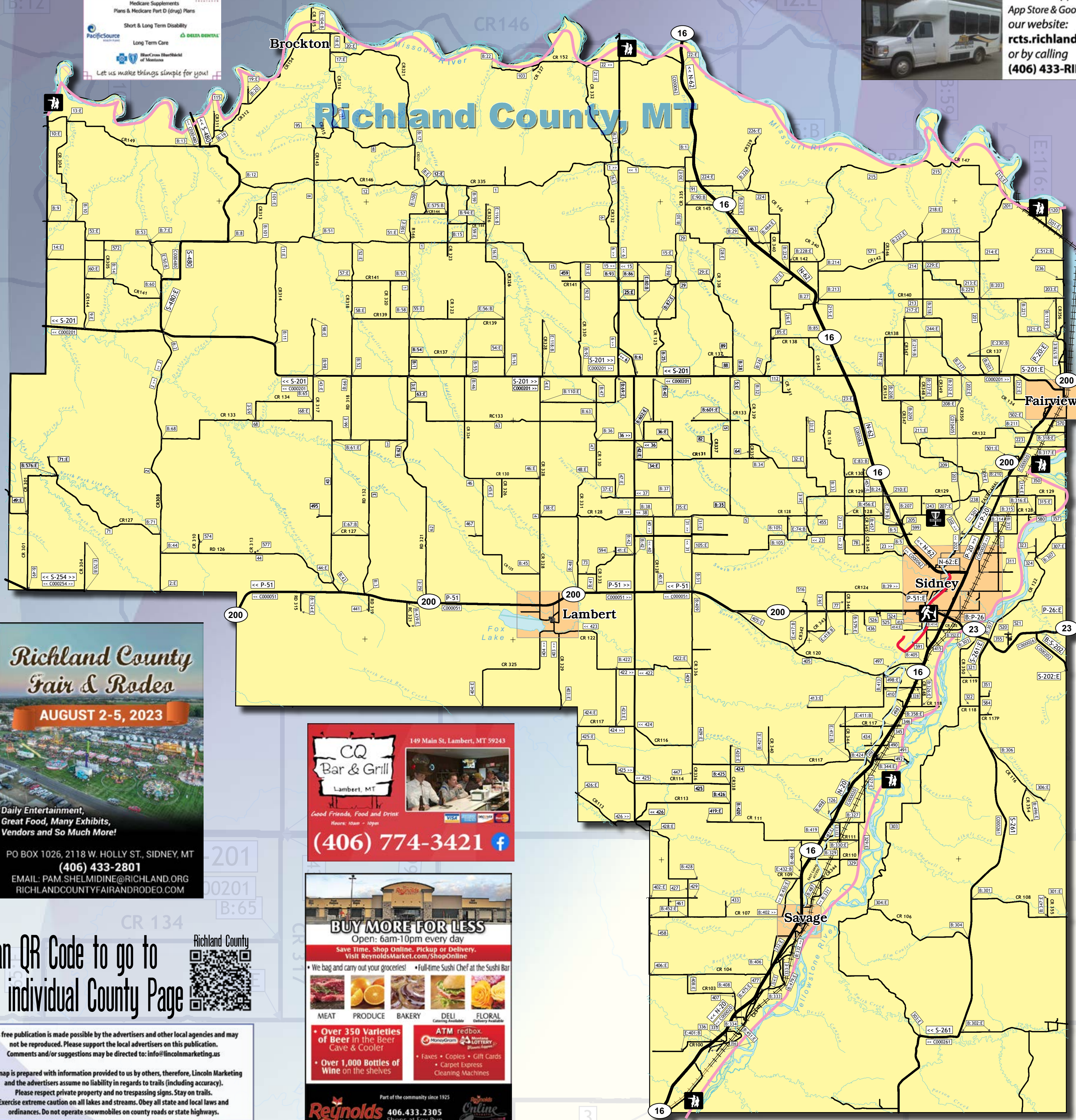
For more information call: 701-842-4199 or check out our website at [www.tobaccogardens.com](http://www.tobaccogardens.com)

Local Area  
**Trails Map**

Free • Free • Free

**Richland County, MT & McKenzie County, ND**

**LincolnMarketing** Scan the QR Code for Digital Copy



**HANSEN**  
DIESEL AND AUTOMOTIVE

**701-444-2341**

601 Main St. S • Watford City, ND

Monday - Friday 8am - 5:30pm

**Prairie Hills Recovery Center**

We are here for you!

Sidney Office: 623 N. Central Ave  
Phone: (406) 488-3001 Fax: (406) 488-3003

Glendive Office: 120 W. Towne Street  
Phone: (406) 377-2072 Fax: (406) 377-2071

Baker Office: 7 West Montana Ave  
Phone: (406) 941-0879 Fax: (406) 377-2071

**Richland County Fair & Rodeo**

**AUGUST 2-5, 2023**

Daily Entertainment, Great Food, Many Exhibits, Vendors and So Much More!

PO BOX 1026, 2118 W. HOLLY ST., SIDNEY, MT  
**(406) 433-2801**  
EMAIL: [PAM.SHELMIDINE@RICHLAND.ORG](mailto:PAM.SHELMIDINE@RICHLAND.ORG)  
RICHLANDCOUNTYFAIRANDRODEO.COM

**CQ Bar & Grill**  
Lambert, MT

Good Friends, Food and Drinks  
Hours: 10am - 10pm

**(406) 774-3421**

**BUY MORE FOR LESS**  
Open: 6am-10pm every day

Save time, shop online. Pickup or Delivery.  
Visit: [ReynoldsMarket.com/ShopOnline](http://ReynoldsMarket.com/ShopOnline)

- We bag and carry out your groceries!
- Full-time Sushi Chef at the Sushi Bar

MEAT PRODUCE BAKERY DELI FLORAL

- Over 350 Varieties of Beer in the Beer Cave & Cooler
- Over 1,000 Bottles of Wine on the shelves

ATM redbox  
MoneyGram  
• Taxes • Copies • Gift Cards  
• Carpet Express  
Cleaning Machines

Part of the community since 1925

**Reynolds MARKET** 406.433.2305  
Shops at Fox Run  
1404 N. Central Ave., Sidney  
[www.ReynoldsMarket.com](http://www.ReynoldsMarket.com)

**RICHLAND COUNTY Housing Authority**

The Richland County Housing Authority is dedicated to providing housing and related services for very low, low and moderately low income families and individuals. Our management and staff are committed to serving our clients with professionalism, courtesy, and respect.

To apply for housing, you can come down to our office located at 1032 6th St. SW in Sidney or call us at (406) 433-1978. Our applications can be mailed, emailed or faxed for your convenience and our staff can answer any questions you might have regarding our programs and how they work.

For each household applying, we require consent for:  
Criminal Background Checks  
Income and Bank Verifications  
Reference Checks from Landlords and Other Housing Providers

406-433-1978 • FAX 406-433-4115  
1032 6TH ST SW SIDNEY MT 58270  
[RICHLANDCOUNTYHOUSINGAUTHORITY.COM](http://RICHLANDCOUNTYHOUSINGAUTHORITY.COM)

**Advertising Made Simple**

call: **651-788-9323**  
or **651-756-1048**

**LincolnMarketing**  
www.lincolnmarketing.us

Shop • Dine  
Play • Stay

**LOCALLY**

...and support the community you live in!

Scan QR Code to go to the individual County Page

This free publication is made possible by the advertisers and other local agencies and may not be reproduced. Please support the local advertisers on this publication. Comments and/or suggestions may be directed to: [info@lincolnmarketing.us](mailto:info@lincolnmarketing.us)

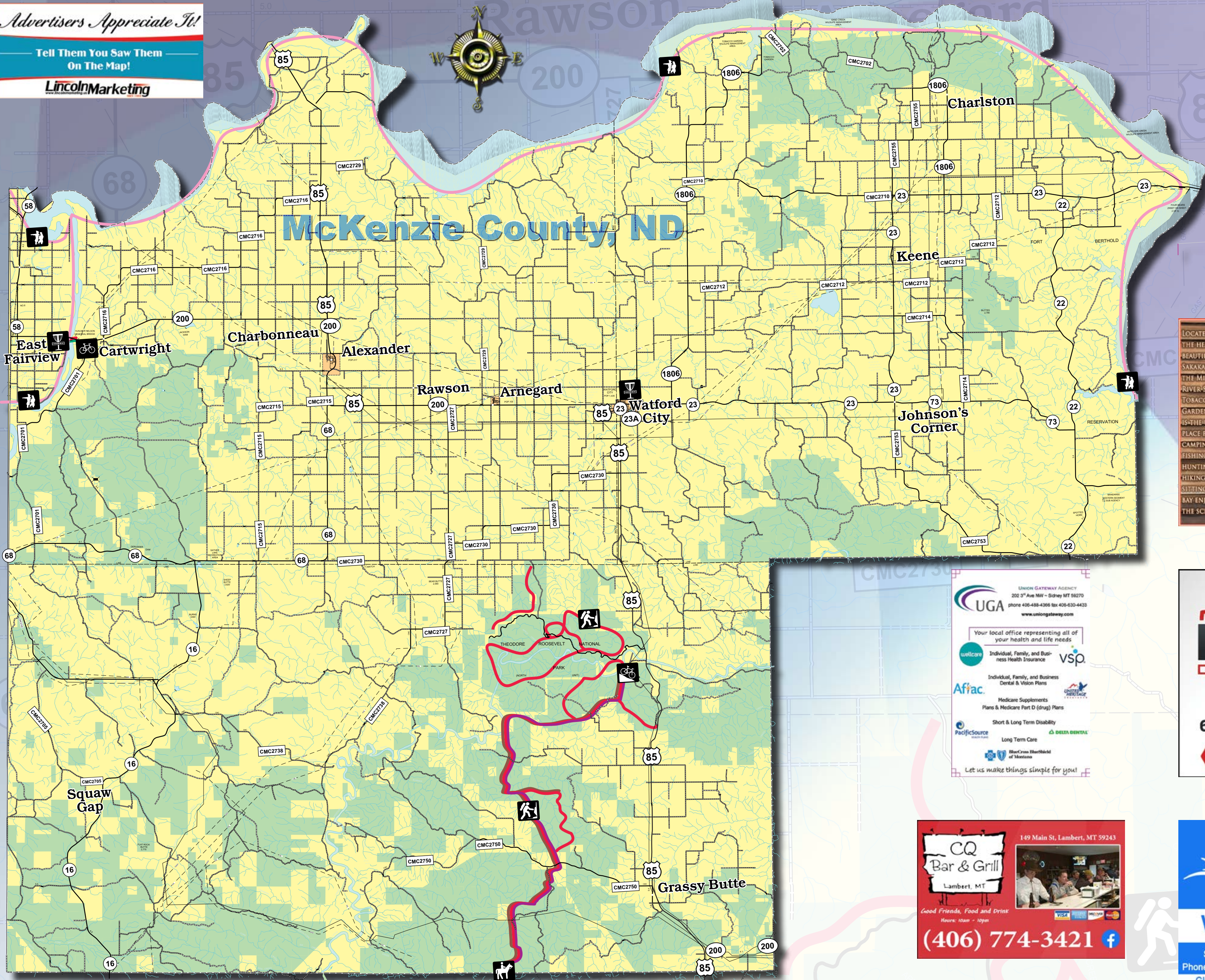
This map is prepared with information provided to us by others, therefore, Lincoln Marketing and the advertisers assume no liability in regards to trails (including accuracy). Please respect private property and do not trespass signs. Stay on trails. Exercise extreme caution on all lakes and streams. Obey all state and local laws and ordinances. Do not operate snowmobiles on county roads or state highways.

View this publication online at [www.lincolnmarketing.us](http://www.lincolnmarketing.us)

Advertisers Appreciate It!

Tell Them You Saw Them  
On The Map!

LincolnMarketing



**BUY MORE FOR LESS**  
Open: 6am-10pm every day  
Save Time. Shop Online. Pickup or Delivery.  
Visit [ReynoldsMarket.com/ShopOnline](http://ReynoldsMarket.com/ShopOnline)

- We bag and carry out your groceries!
- Full-time Sushi Chef at the Sushi Bar

MEAT PRODUCE BAKERY DELI FLORAL

- Over 350 Varieties of Beer in the Beer Cave & Cooler
- Over 1,000 Bottles of Wine on the shelves
- ATM redbox
- Faxes • Copies • Gift Cards
- Carpet Express
- Cleaning Machines

Part of the community since 1923  
**Reynolds MARKET**  
406.433.2305  
Shops at Fox Run  
1404 N. Central Ave., Sidney  
[www.ReynoldsMarket.com](http://www.ReynoldsMarket.com)

LOCATED IN THE HEART OF BEAUTIFUL LAKE SAKAWA AND THE MISSOURI RIVER SYSTEM, TOBACCO GARDENS IS THE ULTIMATE PLACE FOR CAMPING, FISHING, HUNTING, HIJKING OR JUST SITTING BY THE BAY ENJOYING THE SCENERY.

**TOBACCO GARDENS RESORT AND MARINA**

- ELECTRIC & PRIMITIVE CAMPSITES
- OFF-ON WATER GAS AVAILABLE
- FULL RESTAURANT & CONVENIENCE STORE
- BEER AND WINE ON/OFF SALE
- BAIT, TACKLE, MARINE ACC.
- FISH CLEANING FACILITY
- BATHROOMS & SHOWERS
- CEMENT BOAT RAMPS
- MODERN BATHROOMS & SHOWER HOUSE
- WHERE YOU CAN DO AS LITTLE, OR AS MUCH AS YOU WANT!

TOBACCO GARDENS IS LOCATED 2 MILES EAST OF WATFORD CITY ON ND HIGHWAY 23, THEN 25 MILES NORTH WEST (AFTER 1806).

For more information call: 701-842-4199 or check out our website at [www.tobaccogardens.com](http://www.tobaccogardens.com)

Local Area  
**Trails Map**

Free • Free • Free

**Richland County, MT & McKenzie County, ND**

LincolnMarketing Scan the QR Code for Digital Copy

UNION GATEWAY AGENCY  
302 3rd Ave NW - Sidney MT 59270  
Phone: 406-488-4366 Fax: 406-430-4433  
[www.uniongateway.com](http://www.uniongateway.com)

Your local office representing all of your health and life needs

- Individual, Family, and Business Health Insurance
- Individual, Family, and Business Dental & Vision Plans
- Medicare Supplements Plans & Medicare Part D (drug) Plans
- Short & Long Term Disability
- Long Term Care

Let us make things simple for you!

**HANSEN**  
DIESEL AND AUTOMOTIVE

701-444-2341  
601 Main St. S • Watford City, ND

Monday - Friday 8am - 5:30pm

**CQ Bar & Grill**  
Lambert, MT

Good Friends, Food and Drink  
Hours: 10am - 10pm

149 Main St, Lambert, MT 59243  
(406) 774-3421

**Prairie Hills Recovery Center**

We are here for you!

Sidney Office: 623 N. Central Ave  
Phone: (406) 488-3001 Fax: (406) 488-3003  
Glenville Office: 120 W. Towne Street  
Phone: (406) 377-2072 Fax: (406) 377-2071  
Baker Office: 7 West Montana Ave  
Phone: (406) 941-0879 Fax: (406) 377-2071

**Richland County Fair & Rodeo**  
AUGUST 2-5, 2023

Daily Entertainment, Great Food, Many Exhibits, Vendors and So Much More!

PO BOX 1026, 2118 W. HOLLY ST., SIDNEY, MT  
(406) 433-2801  
EMAIL: [PAM.SHELMIDINE@RICHLAND.ORG](mailto:PAM.SHELMIDINE@RICHLAND.ORG)  
[RICHLANDCOUNTYFAIRANDRODEO.COM](http://RICHLANDCOUNTYFAIRANDRODEO.COM)

**RICHLAND COUNTY Housing Authority**

To apply for housing, you can come down to our office located at 1032 6th St. SW in Sidney or call us at (406) 433-1978. Our applications can be mailed, emailed or faxed for your convenience and our staff can answer any questions you might have regarding our programs and how they work.

For each household applying, we require consent for:  
Criminal Background Checks  
Income and Bank Verifications  
Reference Checks from Landlords and Other Housing Providers

406-433-1978 • FAX 406-433-6116  
1032 6TH ST. SW SIDNEY MT 59270  
[RICHLANDCOUNTYHOUSINGAUTHORITY.COM](http://RICHLANDCOUNTYHOUSINGAUTHORITY.COM)

Shop • Dine  
Play • Stay

**LOCALLY**

...and support the community you live in!

- Disc Golf Course
- Hiking/Walking Trail
- Equestrian Trail
- Lewis & Clark Trail
- Bicycle Trail/Route
- Mountain Bike Trail

Scan QR Code to go to the individual County Page

McKenzie County

This free publication is made possible by the advertisers and other local agencies and may not be reproduced. Please support the local advertisers on this publication. Comments and/or suggestions may be directed to: [info@lincolnmarketing.us](mailto:info@lincolnmarketing.us)

This map is prepared with information provided to us by others, therefore, Lincoln Marketing and the advertisers assume no liability in regards to trails (including accuracy). Please respect private property and do not trespass. Stay on trails. Exercise extreme caution on all lakes and streams. Obey all state and local laws and ordinances. Do not operate snowmobiles on county roads or state highways.

View this publication online at [www.lincolnmarketing.us](http://www.lincolnmarketing.us)

**Hiking Safety Tips**

Before heading out on a hike, make sure you are prepared. Determine the length of the hike you're going on and the type of terrain you are going to traverse. Make sure to wear suitable footwear depending on the weather and terrain. Pack an appropriate size backpack and proper gear for your hike. Let a friend or family member know when and where you are going and how long you plan on being gone.

**Bus Service from 7am-6pm Monday through Friday All rides are FREE (subject to availability)**

**Richland County TRANSPORTATION**

Schedule your ride with the RCTS app (available on App Store & Google Play), on our website: [rcts.richland.org](http://rcts.richland.org) or by calling (406) 433-RIDE (7433)