

Free

Resident Guide



Kandiyohi, Meeker
& Renville Counties,
Minnesota

- Hunting Seasons
- Fishing Seasons
- Recreation Trails
- DNR License Centers
- Residential Services
- Local Attractions
- Parks & Rec. Info
- Area History
- Local Events

LincolnMarketing
SINCE 1984



Scan QR
Code for
Digital Copy

80TH ST. AGGREGATES

Gravel • Washed Sand
(Approved For Sewer Systems)
All Sizes Drainage & Landscape Rock
Sand Fill, Coarse Fill & Clay
Dirt • Peat Dirt • Loader Work
• Foundation Rock Columns
You Pickup Or We Deliver

www.SandAndGravelMN.net

Jay Schoep, Owner

(Cell) 320-841-0472

1025 80th St. SE • Maynard, MN 56260

LAKESIDE SELF STORAGE

**AFFORDABLE
STORAGE**

**LOCATED ON HWY 71
NEXT DOOR TO THEIR WELL**

12011 Hwy 71 NE • Spicer, MN

CALL: (320) 796-4458

- Indoor Storage Units for BIG-RIG RVs
- Units as Deep as 45'
- 14' High Doors • Pull-Thru Units
- Small Units for Household Storage
- Units for Furniture Storage
- Units for Boats & Pontoons
- Temperature Controlled Units Available
- Safe & Secure Storage
- Keypad Entry - Gated
- 24/7 Access
- Online Payments Accepted
- Big or Small - We Store Them All!!

COME STAY WITH US!

www.lakesideselfstoragespicer.com

PIZZA. PASTA. BEER & WINGS.



Join Us For
**DAILY
HAPPY HOURS**



2100 E. Highway 12 • Willmar, MN 56201 • 320-231-2301

(Connected to the Best Western Plus Willmar Hotel)



**EXCELLENT FOOD, SPORTS
& LIVE ENTERTAINMENT**

320-214-7833

www.ruffswings.com

2100 US-12 • Willmar, MN 56201



MEEKER MANOR

REHABILITATION CENTER

Short Term Rehabilitation

Long Term Care

Physical, Occupational & Speech Therapy
Comprehensive Nursing Support

600 S Davis Ave. | Litchfield, MN

320-693-2472

monarchmn.com

NOW HIRING:

CNAs • Nurses • Culinary

*Where CARE and CUSTOMER SERVICE
COME TOGETHER*



316 Business 23 E
Paynesville, MN

320•243•3644

Specializing in Many Service Areas

Plumbing

Heating & A/C

Water Treatment Systems

Radon Testing-Mitigation

Gravel & Excavation

Commercial Concrete

Concrete Pumping

www.vossplumbing.com



Lic. #58961 PM | #RMIT-00014 | NRPP Certified

TABLE OF CONTENTS

2	Local Area Events
4-5	Resident Services
6	Kandiyohi County History
7-8	Kandiyohi County Communities
9	Meeker County History
10-11	Meeker County Communities
12	Renville County History
13	Renville County Communities
14-15	Parks & Recreation
16-17	Local Area Attractions
18-19	Minnesota Hunting Seasons
20-21	DNR License Centers
22	Minnesota Fishing Seasons
30-31	Area Trails

Scan the QR Codes to go to
the individual county page.

Kandiyohi County



Meeker County



Renville County



This free publication is made possible by the advertisers and other local agencies and may not be reproduced. Please support the local advertisers on this publication. Comments and/or suggestions may be directed to: info@lincolnmarketing.us

View this publication online at www.lincolnmarketing.us

LOCAL AREA EVENTS

JANUARY

Willmar/Spicer Polar Plunge
Winterfest (Jan-Feb) | Spicer
Midwest Vintage Snowmobile Show | Spicer
Sno-Skippers Speed/Radar Run | Spicer
Annual Squirrel Appreciation Day | New London
Radar Run | Green Lake
February Frost Festival (Jan-Feb) | Olivia
Sno-Skippers All Class Drag Run | Spicer
Sno-Skippers Vintage Drag Race | Spicer

FEBRUARY

Annual Vintage Drag Race & Vintage Show | Willmar
Brew Ha Ha | Willmar
Winter Fun Day at Prairie Woods | Spicer
Frozen 5k Run/Walk | Spicer

MARCH - APRIL

Novice Bonspiel | Willmar
St. Patrick's Day Red Beard Run/Walk | Willmar
Symphonic Orchestra | Willmar
Earth Day Celebration | Spicer
Annual Chili Cook-Off | Willmar

MAY

Memorial Day Spring Festival | New London
Memorial Day Parade | Raymond
Memorial Day/Law Day 5k Run | Willmar
Cinco De Mayo Family Festival | Willmar
Annual Sunburg Syttende Mai Celebration

JUNE

Kandi is Dandy Days | Kandiyohi
Atwater Festival Days
Studio Hop | Willmar
Willmar Fest
Island Days | Bird Island
West Central Dairy Days | Willmar
Foot Lake 4 Walk/Run | Willmar
Smokin' for The Link Rib Fest | New London

JULY

4th of July Celebration | Area Wide
Litchfield Watercade
Danube Fun Days
Corn Capital Days | Olivia
Sacred Heart Summerfest | Willmar
Franklin Catfish Derby Days
Cosmos Space Festival
Rusty Eyeball Car Show | Willmar
New London Water Days
Meeker County Fair (July-Aug) | Litchfield
Lake Lillian Fun Days (July-Aug)

AUGUST

Kandiyohi County Fair | Willmar
Annual Green Lake Kids Triathlon | Spicer
Annual Green Lake Triathlon | Spicer
Annual New London to New Brighton Antique Car Run
Pennock Fun Days
Renville County Fair | Bird Island
Raymond Harvest Festival

SEPTEMBER - OCTOBER

Atwater Threshing Days
Annual Celebrate Art! Celebrate Coffee! | Willmar
Annual Mayor's Bike Ride | Willmar
Annual Out of the Darkness Willmar Community Walk
Pumpkin Festival | Litchfield
Red Rooster Days | Dassel

NOVEMBER - DECEMBER

Holidaze Parade | Willmar
Holiday Happenings | Hector
Unforgettable Christmas | Hector
Old Fashioned Christmas | Bird Island
Holiday Happenings | Olivia

**Events are subject to change*

**Some Events may not have been posted at time of Publication*

**To find more MN events visit
<http://www.exploreminnesota.com>*

A graphic featuring a stylized American flag with stars and stripes. A banner across the middle reads "Veterans" in a large, cursive font. Below the banner, the text "ARE YOU AWARE OF YOUR BENEFITS?" is written in bold, red, sans-serif capital letters. To the right of the text is a bald eagle with its wings spread. Below the main text, a red banner with white text reads "FEDERAL & STATE BENEFITS MAY INCLUDE:". Below this, a list of benefits is shown in white text on a red background: "Compensation • Pension • Medical Care • Burial Benefits", "Dependent's and Survivor's • State Dental & Optical Care Benefits". At the bottom, a small line of text reads "*Benefits subject to approval the Department of Veterans Affairs".

ARE YOU AWARE OF YOUR BENEFITS?

FEDERAL & STATE BENEFITS MAY INCLUDE:

Compensation • Pension • Medical Care • Burial Benefits
Dependent's and Survivor's • State Dental & Optical Care Benefits

**Benefits subject to approval the Department of Veterans Affairs*

**MEEKER COUNTY
VETERANS SERVICE OFFICER**

Tim Steinert
114 N. Holcombe Avenue
Litchfield, MN 55355
Phone: (320) 693-5445
Fax: (320) 693-5449

**RENVILLE COUNTY
VETERANS SERVICE OFFICER**

Lee Stock
Government Services Center
105 S. 5th Street, Ste #247
Olivia, MN 56277
Phone: (320) 523-3763
Fax: (320) 523-3716

**KANDIYOHI COUNTY
VETERANS SERVICE OFFICER**

Trisha Appledorn
2200 23rd Street NE
Willmar, MN 56201
Phone: (320) 231-6226
Fax: (320) 231-7858

Veterans Crisis Line
DIAL 988 then **PRESS 1**

Veterans Linkage Line
your link to experts
minnesotaveteran.org | 1-888-LinkVet (546-5838)

KANDIYOHI COUNTY

Administrator	(320) 231-6215
Assessor	231-6200
Attorney	231-2440
Auditor/Treasurer	231-6202
Community Corrections	231-6222
Facility Management	231-6241
Emergency Management	235-5133
Environmental Services	231-6229
Extension Services	231-7890
Hazardous Waste	231-3587
Human Resources	231-6215
License Registrar	231-6205
Family Services	231-7800
Public Health	231-7800
Public Works	235-3266
Recorder/Vital Statistics	231-6223
Recycling Center	231-3587
Sheriff	235-1260
Surveyor	441-2495
Veterans Services	231-6226
Zoning	231-6229

MEEKER COUNTY

Administrator	(320) 693-5200
Assessor	693-5205
Attorney	693-5220
Auditor	693-5212
Court Administration	693-6015
Court Services/Law Clerk.....	693-5260
Highway	693-5360
Extension Services	693-5275
Parks & Recreation	693-5450
Planning & Zoning	693-5290
Public Health	693-5370
Recorder	693-5440
Sheriff	693-5400
Social Services	693-5300
Treasurer	693-5345
Veterans Services	693-5445

RENVILLE COUNTY

Administrator	(320) 523-3710
Assessor	523-3645
Attorney	523-2661
Auditor/Treasurer	523-2071
Court Administration	523-3680
Court Services	400-0711
Environment Services.....	523-3768
Extension Services	523-3713
Hazardous Waste	523-8002
Human Services	523-2202
Landfill	523-1144
Parks & Recreation	523-3747
Public Health	523-2570
Public Works	523-3759
Recorder	523-3669
Sheriff	523-1161
Veterans Services	523-3763



Join the Family.

Private, Faith-Centered Education
PreK-12th Grade

Community Christian School is a place that nurtures intentionality, promotes creativity, and leads with vigor. Give us a call today.

320.235.0592
www.willmarccs.com

Kandiyohi County History

Kandiyohi County Communities



*K*andiyohi County was established in 1858 with the city of Kandiyohi as its original county seat. The area was comprised of Kandiyohi and then Monongalia Counties until 1870 when the two counties were merged. Willmar was selected as the new county seat in 1871 due to its central location and the name Kandiyohi, a Dakota word for buffalo fish, was selected for the new territory. Railroad development allowed for growth and industry was dominated by agriculture. Kandiyohi County continued to grow and by 1900 its population reached 18,146. It has since become a popular region for recreational activities due to the many lakes found within its borders. Today Kandiyohi County is home to approximately 41,123 residents.

ATWATER – pop. 1,036

BLOMKEST – pop. 173

KANDIYOHI – pop. 533

LAKE LILLIAN – pop. 247

NEW LONDON – pop. 1,343

PENNOCK – pop. 500

PRINSBURG – pop. 454

RAYMOND – pop. 771

REGAL – pop. 38

SPICER – pop. 1,098

SUNBURG – pop. 101

WILLMAR (COUNTY SEAT) – pop. 17,907

**Populations are approximate.*

ATWATER

First known as Summit Lake, Atwater was established in 1869. The community was renamed in honor of E.D. Atwater, railroad secretary, and the area grew dramatically with the arrival of the railroad. By 1880 the community was incorporated and housed grain elevators and a variety of businesses. A fire in 1891 nearly destroyed the community, but residents quickly rebuilt. Today Atwater is home to approximately 1,036 residents.

BLOMKEST

Blomkest was originally known as Kester and established as a railway village. Streets were platted in 1926 and the community was renamed Blomkest. The name Blomkest commemorates the original townsite and early settler Ole Blomquist. Blomkest was incorporated in 1952 and has remained an agricultural community. Today Blomkest is home to approximately 173 residents.

KANDIYOHI

Kandiyohi was established in 1868 and named after the nearby lakes. As the railroad was constructed in 1869 the community was almost selected to be the state capital for Minnesota, but was vetoed by Governor William Rainey Marshall. Streets were platted, a post office was founded and the community was incorporated in 1904. Today Kandiyohi is home to approximately 533 residents.

LAKE LILLIAN

Lake Lillian was first explored in 1856 and a post office was established in 1868. The community was named after Lillian Whitefield, wife of Edwin Whitefield, an artist and author who had settled in the area. As rail lines were constructed, the area began to grow, and in 1926 Lake Lillian was incorporated. Today Lake Lillian is home to approximately 247 residents.

NEW LONDON

The construction of a sawmill in 1856 sparked the development of New London and a post office was established in 1867. The name New London was suggested by Louis Larson in honor of his Wisconsin hometown and the community was selected as a temporary county seat. In 1889 New London was incorporated and construction of the railroad allowed for growth. Today New London is home to approximately 1,343 residents.

PENNOCK

Originally known as St. John's, Pennock was established in 1870 as a railway village. A post office was established the following year with Erick G. Berglund serving as its first postmaster. The community was renamed in 1891 after railway superintendent George Pennock and in 1903 Pennock was incorporated. Today Pennock is home to approximately 500 residents.

PRINSBURG

Prinsburg was founded in 1884 as Martin Prins and Theodore Koch purchased over 35,000 acres of land for the railroad. Prins offered to partially fund a church as long as at least 20 families arrived to stake land claims. Over 40 lots were sold and the community was named in his honor. Streets were platted in 1886 and a post office was established the following year. Today Prinsburg is home to approximately 454 residents.

Kandiyohi County Communities

RAYMOND

Raymond was platted in 1887 and named in honor of Raymond Spicer, son of John M. Spicer who founded Willmar. The community was incorporated in 1897 and the area continued to grow. It is known as being the birthplace of chemist William A. Mitchell, who patented over 70 products including Tang, Pop Rocks, and Jell-O. Today Raymond is home to approximately 771 residents.

REGAL

First known as Lintonville, the community was settled in 1886 as the railroad was constructed. A post office was established in 1887 and the area continued to grow. The name Regal was suggested by George Weidner and the community was renamed by popular vote in 1915 and incorporated in 1940. Today Regal is home to approximately 38 residents.

SPICER

Founded on the abandoned townsite of Columbia, Spicer was platted in 1886 and named in honor of president of the railroad construction company, John M. Spicer. A post office was established with Burton B. Swetland serving as the first postmaster, who also operated the first general store and tourist boat on Green Lake. Spicer was incorporated in 1904 and has since become a haven for recreational enthusiasts. Today Spicer is home to approximately 1,098 residents.

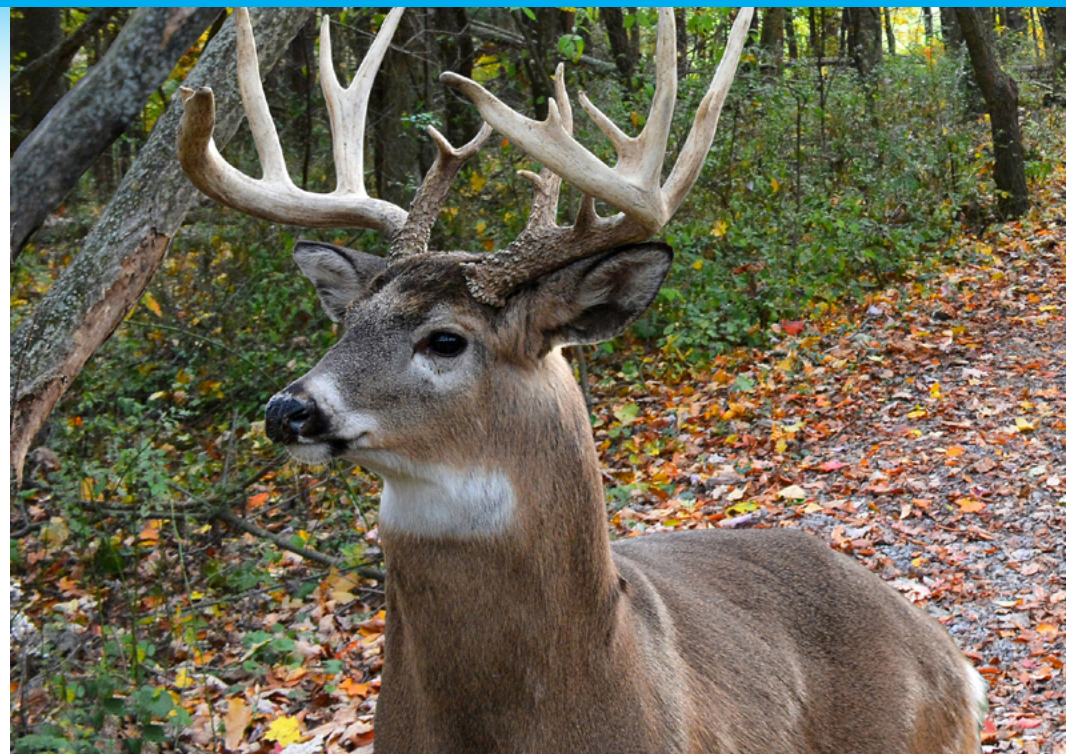
SUNBURG

The community of Sunburg was established by settlers in 1870 that had anticipated the arrival of the railroad. The name Sunburg, suggested by postmaster John Sandvigen, was derived from the Norwegian word sund, meaning a strait between two lakes. Sunburg was incorporated in 1951 and has remained an agricultural community. Today Sunburg is home to approximately 101 residents.

WILLMAR (COUNTY SEAT)

Willmar was founded in 1869 as the railroad was constructed. The community was named by railroad president George Becker, in honor of European investor Leon Willmar. In 1871 Willmar was selected as the county seat and incorporated in 1874. The community continued to develop as businesses were established to meet the growing needs of the community. It has since become a destination for recreational enthusiasts, with its many parks and proximity to a variety of lakes. Today Willmar is home to approximately 17,907 residents.

Meeker County History



*M*eeker County was established in 1856 and named in honor of Associate Justice of the Minnesota Supreme Court, Bradley B. Meeker. Forest City was originally selected as the county seat and the area began to grow with construction of the railroad. Early industry was dominated by agriculture with residents raising wheat, oats, flax and barley. The county seat was moved to Litchfield in 1869 and by 1900 the population of Meeker County had reached 17,773. After 1920 agriculture began to shift towards dairy production with many residents joining the Land O'Lakes Creamery. It has remained a close-knit community and is now one of Minnesota's top poultry and dairy producing regions. Today Meeker County is home to approximately 23,154 residents.

CEDAR MILLS – pop. 53

COSMOS – pop. 553

DARWIN – pop. 308

DASSEL – pop. 1,326

EDEN VALLEY – pop. 951

GROVE CITY – pop. 579

KINGSTON – pop. 120

LITCHFIELD (COUNTY SEAT) – pop. 6,555

WATKINS – pop. 927

**Populations are approximate.*

Meeker County Communities

CEDAR MILLS

Cedar Mills was founded in 1860 and named after nearby Cedar Lake. The community was organized in 1870 with a post office and railroad development sparked growth. In 1922 streets were platted and by 1950 Cedar Mills was incorporated. Today Cedar Mills is home to approximately 53 residents.

COSMOS

Cosmos was first settled in 1867 and the community was named by Daniel Hoyt, a local resident and surveyor, after the Greek word for harmony and order. The first post office was established in 1870 and the community began to develop with the arrival of the railroad. Streets were platted in 1923 and the community was incorporated in 1926. Today Cosmos is home to approximately 553 residents.

DARWIN

First known as Rice City, Darwin was organized in 1858. In 1862 a post office was founded and the construction of the railroad allowed for growth. Streets were platted in 1869 and the community was renamed in honor of railroad promoter and stockholder E. Darwin Litchfield. Darwin is now widely recognized for having the world's largest ball of twine, built by Francis A. Johnson. Today Darwin is home to approximately 308 residents.

DASSEL

Settled in 1856, Dassel was first recognized as Swan Lake. Streets were platted in 1869 by Parker Simmons and the community was renamed in 1871 after Bernard Dassel, railroad secretary. A post office was established and the area continued to grow as the railroad was developed. By 1890 Dassel housed a hotel, sawmill, general store and a variety of specialty shops. Today Dassel is home to approximately 1,326 residents.

EDEN VALLEY

Located in Meeker and Stearns Counties, Eden Valley was settled in 1856. The community was first known as Pap-pelbush and was renamed by officers of the railroad. Eden Valley was organized in 1867 and streets were platted in 1886. By 1894 the community was incorporated and housed a post office, general store and assortment of specialty shops. Today Eden Valley is home to approximately 951 residents.

GROVE CITY

Grove City was first settled in 1869 and recognized as Swede Grove. Streets were platted in 1870 and as the railroad arrived, the community was renamed Grove City. In 1878 Grove City was incorporated and businesses were established to meet the growing needs of the area. Today Grove City is home to approximately 579 residents.

KINGSTON

Settlers arrived to the Kingston area in 1856 as they traveled along the Crow River. The first post office was established the following year and the name Kingston was suggested by George A. Nourse, a lawyer from St. Anthony. Streets were platted in 1871 and the community was incorporated in 1961. Today Kingston is home to approximately 120 residents.

Meeker County Communities

LITCHFIELD (COUNTY SEAT)

First recognized as Ripley and later Ness, Litchfield was founded in 1856. The community was renamed Litchfield in honor of the Litchfield family who helped finance the construction of the railroad in 1862 and were avid with the development of the area. Streets were platted in 1869 and the community was selected as the county seat. A post office was established and Litchfield was incorporated in 1872. Litchfield continued to grow as the fertile soil and ample water of nearby Lake Ripley attracted new residents. Today Litchfield is home to approximately 6,555 residents.

WATKINS

Watkins was established as a railway village in 1886 on land owned by Danville D. Spaulding. The community was named by the railroad company and the first post office was established in 1887. In 1893 Watkins was incorporated and the area continued to develop. Today Watkins is home to approximately 927 residents.

LARGEST BALL OF TWINE

Francis Johnson, son of a U.S. congressman, began rolling what came to be the largest twine ball in the world in 1950. Johnson kept the twine ball rolling even when it became so huge and heavy that he could no longer move it by hand. At that point, he used railroad jacks to push the ball and add more twine! Completed in 1979, the impressively rounded ball of twine now sits in a large gazebo in Darwin's Twine Ball Museum, where visitors can pose for snapshots near the quirky accomplishment.

Join Darwin's Twine Ball Days festival on the second Saturday of August for loads of additional family fun! The festival features a Minn-e-Rods tractor pull down Main Street, a parade, live music, sand volleyball tournaments, and more! Don't miss the souvenir shop, which is a sight to see as well.

Twine-Twirled Craft Contest

Twine has been used to craft knotted jewelry, decorate vases and candlesticks, make daisy-like embellishments, and more. Have you made a rustic, twine-twirled craft? Submit a photo and description of your craft for a chance to be published in our upcoming guides! Send your name, phone number, email address, and a description of your twine-twirled craft to: mndesign@lincolnmarketing.us



Renville County History

Renville County Communities



Renville County was established in 1855 and named in honor of Joseph Renville, a local explorer, trader, scout, interpreter and soldier. Beaver Falls was originally selected as the county seat and the region began to develop upon construction of the railroad. Agriculture led the area's industry and due to the marshy soil, drainage ditches were built to make the land more tillable. By 1900 its population had reached 23,693 and the county seat was moved to Olivia after much controversy. The area is now comprised of over 3,000 miles of drainage ditch to allow for better farming and is home to one of the oldest known rocks in Minnesota, the Rainbow Gneiss. Today Renville County is home to approximately 15,718 residents.

BIRD ISLAND – pop. 1,100

BUFFALO LAKE – pop. 725

DANUBE – pop. 472

FAIRFAX – pop. 1,195

FRANKLIN – pop. 461

HECTOR – pop. 1,062

MORTON – pop. 398

OLIVIA (COUNTY SEAT) – pop. 2,341

RENVILLE – pop. 1,194

SACRED HEART – pop. 487

**Populations are approximate.*

BIRD ISLAND

Attracted to the ample timber, Bird Island was first settled in 1872. Its name was derived from a nearby island that was a refuge for birds and streets were platted in 1878. The arrival of the railroad sparked growth and a post office and general store were established. As ditches were constructed, the island for which it was named slowly disappeared, leaving behind fertile soil. Today Bird Island is home to approximately 1,100 residents.

FAIRFAX

Fairfax was founded on land owned by Edmond O'Hara and first known as Cairo. Streets were platted in 1882 and the first post office was established by Luke T. Grady. The community was incorporated in 1888 and as the railroad was constructed, the community was renamed Fairfax by Eben Ryder, railroad president. Today Fairfax is home to approximately 1,195 residents.

HECTOR

Hector was settled in 1873 and first known as Milford. The community was renamed after Hector, New York, the birthplace of many settlers. The first post office was established in 1875 with John Baker serving as postmaster. As the railroad arrived in 1878, streets were platted and Hector was incorporated in 1881. Today Hector is home to approximately 1,062 residents.

OLIVIA (COUNTY SEAT)

Settlers arrived to the Olivia area in 1878 as they were attracted to the fertile soil. Streets were platted and the community was named by Albert Bowman Rogers, a railroad engineer. The development of the railroad allowed for growth and businesses were established to meet the growing needs of the community. Isaac Lincoln served as the area's first postmaster in 1879 and in 1901 Olivia successfully battled Beaver Falls. Olivia is now widely recognized as the Corn Capital of the World, celebrating Corn Capital Days annually. Today Olivia is home to approximately 2,341 residents.

RENVILLE

Renville was established as a railway village and platted in 1878. The community was named in honor of Joseph Renville, whom which the county is also named. By 1900 its population had reached 250 and in 1906 Renville was incorporated. It is now widely recognized as having the largest sugar beet processing plant in the world. Today Renville is home to approximately 1,194 residents.

SACRED HEART

Sacred Heart was first settled in 1866 and a post office was established in 1870 with G.P. Greene serving as the area's first postmaster. Railroad development sparked growth and in 1878 streets were platted. By 1883 Sacred Heart was incorporated and housed grain elevators, general stores, hardware stores, hotels and a saloon. Today Sacred Heart is home to approximately 487 residents.

ANDERSON LAKE COUNTY PARK

63339 County Rd. 5 | Franklin | (320) 523-3747
Anderson Lake County Park is a day use only park, and its principle feature is shoreline fishing.

BEAVER FALLS COUNTY PARK

Shop - 31521 County Rd. 2 | Morton | (320) 523-3747
North Entrance - 31268 County Rd. 2 | Morton
South Entrance - 31599 County Rd. 2 | Morton
Beaver Falls County Park features rustic camping areas, a horse camp with horse ties and manure bunkers, shelters, restrooms, water, picnic areas, plus ample multi-use trails for hiking and horseback riding

BIG KANDIYOHI LAKE COUNTY PARK - WEST

14391 45th St. SE | Lake Lillian | (320) 995-6599
Big Kandiyo Lake Park West features a campground, boat launch and rentals, bait shop, swimming beach, game room, playground equipment and picnic areas.

BIG KANDIYOHI LAKE COUNTY PARK - EAST

9144 123rd Ave. SE | Lake Lillian | (320) 664-4707
Big Kandiyo Lake Park East features a campground, boat launch and rentals, bait shop, swimming beach, playground equipment and picnic areas.

BIRCH COULEE COUNTY PARK

68638 County Rd. 18 | Morton | (320) 523-3747
Birch Coulee County Park features camping, water/electrical hook-ups, a shelter, restrooms, picnic areas and trails for hiking.

CLEAR LAKE COUNTY PARK

35775 County Rd. 2 | Watkins | (320) 693-5450
Clear Lake Park features a boat launch, fishing pier, picnic areas and recreational trails.

DARWIN-DASSEL COUNTY PARK

68825 237th St. | Darwin | (320) 693-5450
Darwin-Dassel County Park features picnic areas, recreational trails and a sledding hill during winter months.

DIAMOND LAKE COUNTY PARK

6903 County Rd. 4 NE | Kandiyo | (320) 974-8520
Diamond Lake County Park features a campground, boat launch, bait shop, swimming beach, playground equipment and picnic areas.

FINNISH MEMORIAL COUNTY PARK

71501 CSAH 27 | Kingston | (320) 693-5450
Finnish Memorial County Park features a canoe launch, tennis court, playground equipment and picnic areas.

GAMES LAKE COUNTY PARK

20944 Co. Rd. 5 NW | New London | (320) 354-4453
Games Lake County Park features a campground, boat launch and rentals, bait shop, swimming beach, game room, playground equipment and picnic areas.

GREEN LAKE COUNTY PARK

12381 N Shore Dr. | Spicer | (320) 796-5564
North Green Lake County Park features a campground, boat launch and rentals, bait shop, swimming beach, game room, playground equipment and picnic areas.

LAKE ALLIE COUNTY PARK

84068 County Rd. 24 | Buffalo Lake | (320) 523-3747
Lake Allie County Park features a shelter, restrooms, picnic areas, playground and fishing pier. Camping is available with 16 RV sites that include water and electrical hookups and a waste dump station.

LAKE KORONIS REGIONAL PARK

51625 CSAH 20 | Paynesville | (320) 276-8843
Lake Koronis Regional Park features a campground, boat launch, swimming beach, playground equipment, ball fields, sand volleyball courts, shuffleboard and horseshoe courts, observation tower, auditorium, picnic areas and recreational trails.

LAKE MANUELLA COUNTY PARK

21239 CSAH 9 | Darwin | (320) 693-5450
Lake Manuella County Park features a swimming beach and picnic areas.

MACK LAKE COUNTY PARK

60757 County Rd. 5 | Fairfax | (320) 523-3747
Mack Lake County Park features a shelter, restrooms, picnic areas, boat landing, fishing and rustic camping.

MONSON LAKE STATE PARK

1690 15th St. NE | Sunburg | (320) 366-3797
Monson Lake State Park features a campground, picnic areas and recreational trails.

SHAW MEMORIAL COUNTY PARK

31577 County Rd. 2 | Litchfield | (320) 693-5450
Shaw Memorial County Park features a ball field, basketball court, ice-skating rink, playground equipment and picnic areas.

SIBLEY STATE PARK

800 Sibley Park Rd. NE | New London | (320) 347-7810
Sibley State Park features a campground, boat launch and fishing pier, interpretive center, picnic areas and recreational trails.

SKALBEKKEN COUNTY PARK

West Entrance - 84068 County Rd. 24 | Sacred Heart
Upper Shelter - 79422 County Rd. 10 | Sacred Heart
Lower Shelter - 79186 County Rd. 10 | Sacred Heart
(320) 523-3747
Skalbekken County Park features shelters, restrooms, water, picnic areas, fishing, rustic camping areas, horse camps with horse ties and manure bunkers, plus ample multi-use trails for hiking and horseback riding.

SPRING LAKE COUNTY PARK

72993 240th St. | Dassel | (320) 693-5450
Spring Lake County Park features a boat launch, fishing pier, ball field and picnic areas.

THOMPSON PARK

13099 525th Ave. | Cosmos
Thompson Park features a disc golf course, fishing dock, picnic shelters, playground, restrooms and a sand volleyball court.

VICKSBURG COUNTY PARK

73715 County Rd. 6 | Renville | (320) 523-3747
Vicksburg County Park features a shelter, water, restrooms, rustic camping, picnic areas, boat landing and trails for hiking. The river is great for fishing, as well as canoeing and playing on the sandbar.

WEST RIPLEY COUNTY PARK

25288 W Pleasure Dr. | Litchfield | (320) 693-5450
West Ripley County Park features a boat launch, fishing pier, sand volleyball court, horseshoe court, playground equipment, picnic areas and recreational trails.

WOODLAND COUNTY PARK

27299 MN-15 | Dassel | (320) 693-5450
Woodland County Park features picnic areas and recreational trails.

Kandiyo Lake County Parks: (320) 995-6599

Meeker County Parks: (320) 693-5450

Renville County Parks: (320) 523-3768

Disc golf or frisbee golf is played a lot like traditional ball golf but instead of hitting a ball with a club into a hole the player throws a frisbee into a basket. Disc golf can be played by just about anyone at any age. It's also a cheap sport to get into. Specialized frisbees for disc golf cost around \$10-\$15 and a lot of courses are free. Playing disc golf is a great way to get out for some exercise, enjoy nature and have some fun.

Disc Golf



A MAZE'N FARMYARD

57645 State Hwy. 55 | Eden Valley | (320) 453-6901

ALLEY ON ASH

19 Ash St SE | New London | (320) 354-2112

ATWATER AREA HISTORICAL SOCIETY & MUSEUM

500 Pleasant Ave. W | Atwater | 320-974-1074

BARN THEATRE

321 SW 4th St. | Willmar | (320) 235-9500

BIG KAHUNA FUN PARK

190 Progress Way | Spicer | (320) 796-2445

BIRCH COULEE BATTLEFIELD

32469 Hwy. 2 | Morton | (800) 657-3773

DASSEL HISTORY CENTER & ERGOT MUSEUM

901 1st St. N | Dassel | (320) 275-3077

DESTINATION PLAYGROUND

945 Hwy. 71 S. N. | Willmar | (320) 235-1454

DOROTHY OLSON AQUATIC CENTER

1601 22nd St SW | Willmar | (320) 441-2018

EAGLE CREEK GOLF CLUB

1000 26th Ave. NE | Willmar | (320) 235-1166

FOREST CITY STOCKADE

309th St. | Litchfield | (320) 693-6782

FORT RIDGELY HISTORIC SITE

72404 Co. Rd. 30 | Fairfax | (507) 628-5591

FOXHOLE BREWHOUSE

313 4th St. SW | Willmar | (320) 441-2071

G. A. R. HALL HISTORICAL MARKER

308 N Marshall Ave. | Litchfield

GIANT CORN GAZEBO

1661 W Lincoln Ave. | Olivia

GOAT RIDGE BREWING CO.

17 Central Ave. W | New London | (320) 354-2383

GOLDEN TICKET CINEMAS KANDI 6

1605 1st St. S | Willmar | (320) 262-5505

GREENWATER GARAGE & GALLERY

101 S Main St. | New London

HAWK CREEK COUNTRY CLUB

100 Spicer Ave. NE | Raymond | (320) 967-4653

ISLAND PINE GOLF CLUB

1601 Wyoming Ave. W | Atwater | (320) 974-8600

JACKPOT JUNCTION CASINO HOTEL

39375 County Rd. 24 | Morton | (800) 946-2274

KANDIYOHI COUNTY HISTORICAL MUSEUM

610 NE Hwy. 71 | Willmar | (320) 235-1881

LITTLE CROW GOLF RESORT

15980 Hwy. 23 NE | Spicer | (320) 347-1500

LOCOMOTIVE 2523

610 Hwy. 71 NE | Willmar | (320) 235-1881

LOWER SIOUX AGENCY

32469 Redwood County Hwy. 2 | Morton | (507) 697-8674

MEEKER COUNTY HISTORICAL SOCIETY

308 N Marshall Ave. | Litchfield | (320) 693-8911

MEEKER COUNTY OHV PARK

18738 CSAH 9 | Darwin | (320) 587-9505

MEMORIAL ROOM IN CITY AUDITORIUM

313 SW 6th St. | Willmar | (320) 231-8490

MONONGALIA HISTORICAL SOCIETY MUSEUM

18946 Hwy. 9 NE | New London | (320) 354-2990

NORWAY LAKE LOG CHURCH

9601 195th Ave. NW | Pennock | (651) 734-3107

PERFORMING ARTS CENTER

101 4th Ave. SW | New London | (320) 354-2252

PIGEON LAKE ROOKERY

Hwy. 15 | Dassel | (507) 359-6033

POTATO EATERS GALLERY

330 Litchfield Ave. SW | Willmar | (320) 382-9951

RAPTOR RIDGE MUSEUM

12050 County Rd. 40 NE | Spicer | (320) 295-3838

RENVILLE HISTORICAL MUSEUM

441 N Park Dr. | Morton | (507) 697-6147

RICE PARK SPLASH PAD

805 3rd St. SW | Willmar | (320) 235-4913

RIDGEWATER COLLEGE DISC GOLF COURSE

2101 15th Ave. NW | Willmar | (320) 291-0039

ROBBINS ISLAND DISC GOLF COURSE

945 US - 71 BUS | Willmar | (320) 235-1454

SCHWANKES MUSEUM

3310 S 1st St. | Willmar | (320) 231-4341

SIBLEY STATE PARK INTERPRETIVE CENTER

800 Sibley Park Rd. NE | Spicer | (320) 354-2055

SPERRY HOUSE

228 Porto Rico St. | Willmar | (320) 235-1881

SPICER CINEMA 4

151 Progress Cir. | Spicer | (320) 796-5500

TADD LAKE DISC GOLF COURSE

1602 Wyoming Ave. W | Atwater | (320) 974-8760

THE LITTLE THEATRE

24 Central Ave. E | New London | (320) 557-5584

THE VILLAGE CHILDREN'S MUSEUM

1312 SE Lakeland Drive | Willmar | (320) 262-3057

VALLEY GOLF COURSE

1900 Becker Ave. SE | Willmar | (320) 235-6790

WILDCAT COVE PLAYGROUND

159 Lake Ave. N | Spicer | (320) 796-5562

WILLMAR AREA ARTS COUNCIL

321 4th St. SW | Willmar | (320) 235-8560

WILLMAR EDUCATION AND ARTS CENTER

611 5th St. SW | Willmar | (320) 235-8560

WORLD'S LARGEST BALL OF TWINE

200-298 N 1st St. | Darwin

ADVERTISING MADE SIMPLE

Call: 651-788-9323



HUNTING SEASONS

For general information on firearm safety training call: 1 (888) 646-6367 or (651) 296-6157.

Contact the MN DNR for specific zone areas/dates:

Online: www.dnr.state.mn.us, Toll Free: 1 (888) 665-4236.

You can purchase hunting and fishing licenses by phone: 1 (888) 665-4236.

HUNTING

Bear

08/16/24 Baiting start date - Permit areas & no-quota area
09/1/24 - 10/13/24 Permit areas & no-quota area

Deer

09/14/24 - 12/31/24 Archery - Statewide
10/17/24 - 10/20/24 Early Antlerless
10/17/24 - 10/20/24 Youth - Statewide
11/9/24 - 11/24/24 Firearm (Season A) 100 Series permit areas
11/9/24 - 11/17/24 Firearm (Season A) 200 & 300 Series permit areas
11/23/24 - 12/1/24 Firearm (Season B) 300 Series permit areas
11/30/24 - 12/15/24 Muzzleloader - Statewide

Badger

10/19/24 - 03/16/25 North furbearer zone
10/26/24 - 03/16/25 South furbearer zone

Bobcat

12/14/24 - 01/19/25
North of I-94 & U.S. Highway 10

Fox, Gray & Red

10/19/24 - 03/15/25 North furbearer zone
10/19/24 - 03/15/25 South furbearer zone

Opossum

10/19/24 - 03/15/25 North furbearer zone
10/19/24 - 03/15/25 South furbearer zone

Rabbit

09/14/24 - 02/28/25 Jack - Statewide
09/14/24 - 02/28/25 Cottontail & Snowshoe Hare - Statewide

Raccoon

10/19/24 - 03/15/25 North furbearer zone
10/19/24 - 03/15/25 South furbearer zone

Squirrel, Gray & Fox

09/14/24 - 02/28/25 Gray & Fox - Statewide

Grouse

09/14/24 - 01/1/25 Ruffed & Spruce - Statewide
09/21/24 - 12/4/24 Sharp-Tailed - Northwest zone

Pheasant

10/12/24 - 01/1/25 Ring-Necked - Statewide

Wild Turkey

04/17/24 - 05/31/24 Spring - Youth - Statewide
04/17/24 - 05/31/24 Spring - Archery - Statewide
04/17/24 - 04/23/24 Spring - A season - Statewide
04/24/24 - 04/30/24 Spring - B season - Statewide
05/1/24 - 05/7/24 Spring - C season - Statewide
05/8/24 - 05/14/24 Spring - D season - Statewide
05/15/24 - 05/21/24 Spring - E season - Statewide
05/22/24 - 05/31/24 Spring - F season - Statewide
09/28/24 - 10/27/24 Fall - Statewide

TRAPPING

Badger

10/19/24 - 03/16/25 North furbearer zone
10/26/24 - 03/16/25 South furbearer zone

Bobcat

12/14/24 - 01/19/25 North of I-94 & U.S. Highway 10

Fox

10/19/24 - 03/15/25 Gray & Red - North furbearer zone
10/19/24 - 03/15/25 Gray & Red - South furbearer zone

Opossum

10/19/24 - 03/15/25 North furbearer zone
10/19/24 - 03/15/25 South furbearer zone

Rabbit

09/14/24 - 02/28/25 Jack - Statewide
09/14/24 - 02/28/25 Cottontail & Snowshoe Hare - Statewide

Raccoon

10/19/24 - 03/15/25 North furbearer zone
10/19/24 - 03/15/25 South furbearer zone

Squirrel

09/14/24 - 02/28/25 Gray & Fox - Statewide

*Check the MN DNR website for updates.

<https://www.dnr.state.mn.us>

or scan the QR code



EXPERIENCE THE DIFFERENCE

MN-43-12



As one of the fastest growing auctioneers in the country, Jeff Martin Auctioneers is ideally positioned to help businesses continue operating with the bottom line in mind. Our mission is to deliver practical auction solutions in a professional manner with a personal touch.

MSAA
MINNESOTA STATE AUCTIONEERS ASSOCIATION

NAA
AUCTIONEER

JEFF MARTIN
AUCTIONEERS INC.

2910 9TH STREET EAST, GLENCOE, MN 55336 Experience the Difference

844.450.6200 | JEFFMARTINAUCTIONEERS.COM

DNR LICENSE CENTERS

You can purchase hunting and fishing licenses, cross-country ski passes and snowmobile trail stickers through the Electronic License System. Online www.dnr.state.mn.us, Toll Free: 1 (888) 646-6367
Or visit one of the ELS agents available throughout the area:

ATWATER

CASEY'S GENERAL STORE #3299

309 Pleasant Ave. W | Atwater | (320) 974-3111

BIRD ISLAND

BECKLER'S HARDWARE HANK

245 S Main St. | Bird Island | (320) 365-3310

BLOMKEST

A&S STORES INC

19450 Hwy. 71 S | Blomkest | (320) 995-6166

BUFFALO LAKE

MAIN STREET MARKET

123 Main St. | Buffalo Lake | (320) 833-0163

DARWIN

DARWIN GAS & GROCERY

108 Hwy. 12 East | Darwin | (320) 693-0019

DASSEL

KINGSTON MINI MART

31083 MN Hwy. 15 | Dassel | (320) 250-4000

THE BAIT SHOP LLC

150 Parker Ave. W | Dassel | (612) 644-2586

EDEN VALLEY

JACK'S OF EDEN VALLEY

169 Meeker Ave. E | Eden Valley | (320) 453-2248

FAIRFAX

CASEY'S GENERAL STORE #2887

111 Lincoln Ave. | Fairfax | (507) 426-7372

FARM MERCANTILE

110 SE 1st St. | Fairfax | (507) 426-8120

GROVE CITY

LUCKY'S LIQUOR

316 Atlantic Ave. W | Grove City | (320) 857-2155

HECTOR

HOLIDAY #3809

100 Hwy. Ave. E | Hector | (320) 848-2286

KANDIYOHI

KJ'S QUICK STOP

437 Pacific Ave. | Kandiyohi | (320) 382-6317

LAKE LILLIAN

BIG KANDI PARK EAST

9144 123rd Ave. SE | Lake Lillian | (320) 664-4707

LITCHFIELD

LITCHFIELD OUTPOST

914 Sibley Ave. | Litchfield | (320) 593-0025

LITCHFIELD LICENSING #179

702 N Sibley Ave. | Litchfield | (320) 593-5932

RUNNINGS #31

975 E Frontage Rd. | Litchfield | (320) 593-0009

WALMART SUPERCENTER #4374

2301 E Frontage Rd. | Litchfield | (320) 693-1022

MORTON

RIVER VALLEY ARMS & AMMO

221 W 2nd St. | Morton | (507) 829-2439

NEW LONDON

PETE'S SURPLUS

2630 Hwy. 9 NE | New London | (320) 354-2626

SKINDELIEN'S MINI MART

37 Main St. | New London | (320) 354-2423

THE COUNTRY STOP C-STORE

17280 Hwy. 23 | New London | (320) 354-2466

OLIVIA

CASEY'S GENERAL STORE #3276

1311 W Lincoln | Olivia | (320) 523-2748

RENVILLE COUNTY LICENSE BUREAU

500 E Dupue Ave. | Olivia | (320) 523-3612

RENVILLE

CASEY'S GENERAL STORE #3729

325 Park Ave. E | Renville | (320) 329-3170

SPICER

MEL'S SPORT SHOP

102 MN Hwy. 23 S | Spicer | (320) 796-2000

WATKINS

ERTL HARDWARE HANK

101 Central Ave. | Watkins | (320) 764-2890

JACK'S OF WATKINS

241 Veterans Dr. | Watkins | (320) 764-5345

WILLMAR

BARNEY'S

6647 Hwy. 71 NE | Willmar | (320) 231-9708

HOLIDAY STATION STORE #18

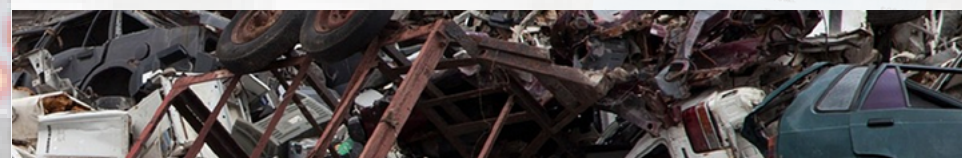
817 W Litchfield Ave. SW | Willmar | (320) 235-0034

RUNNINGS #9

3031 S 1st St. | Willmar | (320) 235-1325

WALMART SUPERCENTER #1470

700 19th Ave. SE | Willmar | (320) 231-3456



JEFF'S AUTO & METAL RECYCLING

**We Buy Junk & Repairable Vehicles,
Farm Machinery, & Miscellaneous Metals.**



**20 & 30 Yard
Roll-Off Dumpsters
Available for Rent**

Call or Text 320-699-1465 • Jeff Garding

INLAND WATERS

Walleye and Sauge 5/13/23 - 2/25/24

6 combined, not more than one walleye over 20"

Northeast zone

Northern Pike 5/13/23 - 2/25/24

Angling: 2 (not more than 1 over 40" in possession. All from 30-40" must be immediately released).

Northern Pike 11/15/23 - 2/25/24

Darkhouse spearing: 2 (Not more than 1 over 26").

North-central zone

Northern Pike 5/13/23 - 2/25/24

Angling: 10 (not more than 2 over 26". All from 22-26" must be immediately released).

Northern Pike 11/15/23 - 2/25/24

Darkhouse spearing: 10 (only 1 between 22-26" and 1 over 26"; or, only 2 over 26").

Southern zone

Northern Pike 5/13/23 - 2/25/24

Angling: 2 (Minimum size 24").

Northern Pike 11/15/23 - 2/25/24

Darkhouse spearing: 2 (Minimum size 24").

Muskellunge 6/3/23 - 12/1/23

1, minimum size 54"

Largemouth and smallmouth bass in the Northeast zone, north and east of US Hwy 53 from Duluth to International Falls and Pelican and Ash lakes in St. Louis County.

5/13/23 - 2/25/24 6 combined

Largemouth and smallmouth bass in the rest of the state

5/13/23 - 5/26/23, Catch-and-release only

Largemouth and Smallmouth Bass

5/27/23 - 9/10/23 6 combined

Largemouth Bass 9/11/23 - 2/25/24 6

Smallmouth Bass 9/11/23 - 2/25/24

Catch-and-release only

Crappie Continuous 10

Sunfish Continuous 20

Rock Bass Continuous 30

White Bass Continuous 30

Channel Catfish Continuous 5 in combination with Flathead Catfish, only 1 fish over 24"

Flathead Catfish 4/1/23 - 11/30/23

2, only 1 fish over 24" in combination with Channel Catfish

Perch

Continuous 20 daily and 40 in possession

Bullhead Continuous 100

Whitefish, Cisco, and Burbot Continuous, No limit (Exception: On Leech Lake Indian Reservation whitefish limit 25 and cisco limit 50.

Smelt Continuous No limit

Including Lake Superior and St. Louis River

Lake and Shovelnose Sturgeon

3/1/23 - 4/14/23

Catch-and-release only, no tag needed

Including Lake Superior and St. Louis River

Lake and Shovelnose Sturgeon

6/16/23 - 4/14/24

Catch-and-release only, no tag needed

Paddlefish No open season

Longnose and Shortnose Gar

Continuous 10 combined

*Contact the MN DNR for specific zone information/dates:

1 (888) 646-6367

www.dnr.state.mn.us

scan the QR code



(Fishing licenses are effective from March 1 to the last day of February of the following year. A fishing license for the current 2023-24 license year is effective until Feb. 29, 2024.)

Public Transportation Serving Kandiyohi, Meeker, and Renville Counties!



CENTRAL COMMUNITY TRANSIT

Serving Kandiyohi, Renville & Meeker Counties

Kandiyohi: (320) 214-7433 or 1-888-750-7433

Renville: (320) 523-3589 or 1-800-450-7964

Meeker: (320) 693-7794 or 1-800-513-7433

Providing Safe and Reliable Transportation
using bus routes and volunteer drivers.

- All buses are handicap accessible
- Bus hours are M-F 6:00am - 6:00pm
- Work, medical appointments, school & shopping

Connecting Communities Together
www.cctbus.org

Boating safety is critical for anyone who operates a boat or spends time on the water. Here are some general boating safety tips to keep in mind:

- **Wear a life jacket:** Always wear a life jacket while boating. Make sure the life jacket is appropriate for your weight and is U.S. Coast Guard approved.
- **Know the weather:** Check the weather forecast before you go boating and keep an eye on changing conditions. If you notice darkening clouds, rough winds or sudden drops in temperature, get off the water.
- **Use navigation aids:** Use navigation aids like buoys and beacons to help you navigate safely.
- **Maintain your boat:** Keep your boat well-maintained and in good working condition. Make sure all safety equipment is in good condition and functioning properly.
- **Avoid alcohol:** Do not drink alcohol while operating a boat. It is illegal and increases the likelihood of accidents.
- **Watch your speed:** Observe speed limits and maintain a safe speed based on conditions. Remember, slower speeds may be necessary in crowded areas or in inclement weather.
- **Be aware of other boats:** Watch for other boats and be aware of their movements. Always assume other boaters may not see you.
- **Know the rules:** Learn and follow boating safety laws and regulations. This includes rules for navigation, safety equipment, and right-of-way.
- **File a float plan:** Always let someone know where you are going and when you plan to return. File a float plan with a trusted person or a marina.
- **Take a boating safety course:** Consider taking a boating safety course to improve your skills and knowledge.



By following these general boating safety tips, you can reduce the likelihood of accidents and enjoy a safe and enjoyable time on the water.



DASSEL HISTORY CENTER AND ERGOT MUSEUM

on the National Register of Historic Places

Ergot: from Blight to Blessing

Seed Corn: from Maize to Amazing

*Magnus Johnson: from Swedish Immigrant
Farmer to US Senator*

**Plus Changing History and Art Exhibits
and Programming**

Hours: Tuesday-Friday, 10 a.m. – 4 p.m. • Saturday, 9 a.m. – 1 p.m.



901 First St. N., Dassel, MN 55325

320.275.3077

dahs@dassel.com

www.dasselhistorycenter.org



Now Hiring
Openings in:
 Law Enforcement
 Health & Human Services
 Highway Department
 Administrative

Check our website
 for current openings
 or sign up for job alerts.
www.co.meeker.mn.us

At Meeker County we take pride in the work we do and we strive to exceed the expectations of those we serve. Apply today for the opportunity to use your unique talents to make the difference in the lives of the people and communities of Meeker County.

Meeker County is an equal opportunity employer.



Listen Local
 AM 1410
 FM 95.9

The Original
KLFD

klfdradio.com

\$10,000 SIGN-ON BONUS

**Seeking Full-time
 CDL Drivers with Class A license.**
 For more information please call or stop in.
320-693-8370
 62824 250th St. • Litchfield, MN




35 W 3rd Street • Litchfield, MN

SCOTT'S AUTO (320) 593-3498
scottsautolitchfield.com



Serving Litchfield & Surrounding Areas

- Air Conditioning & Heating
- Auto Repair • Oil Changes
- Drivetrain Repair
- Brakes • Engine
- Diagnostic



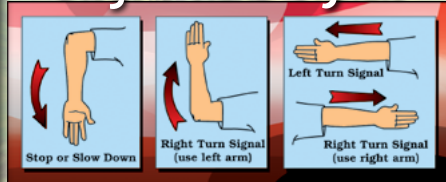
NEW TIRE Sales

BICYCLE SAFETY

Be Aware of your Surroundings

- Always wear a properly fitting bike helmet as most serious injuries are to the head.
- Be sure your handlebars, seat and wheels fit snugly.
- Keep your bike in good shape by checking and oiling your chain, making sure your brakes work properly and maintaining your tire pressure.
- Always ride with both hands on the handlebars except when doing turn signals.
- When leaving a driveway, curb or alleyway always stop and check for traffic in both directions.
- Cross only at intersections.
- Use the crosswalk to walk your bike across busy intersections and follow the traffic signals.
- Never ride against traffic. Travel in the same direction as the cars.
- Whenever you can, use bike routes and avoid busy streets.
- Don't ride near parked cars as doors can open and cause accidents.
- Obey all traffic signs and traffic lights.
- When biking with friends, ride in a single file.
- Always pass other bikers or pedestrians on the left and say "On your left!" to make your presence known.
- Always use bicycle hand signals to alert traffic of your changing direction.

Bicycle Hand Signals



Drink lots of Water!



ATV SAFETY

Know Your ATV

Read the owner's manual

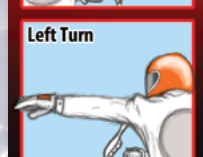
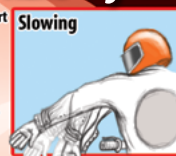
and know your vehicle thoroughly. • Check your vehicle before you ride. • Wear protective equipment and clothing. • Don't lend your vehicle to unskilled riders. • Supervise young or inexperienced riders. • Never carry a passenger on vehicles meant for one rider. • Do not operate under the influence of drugs or alcohol. • Drive at speeds that are appropriate to trail conditions. • Stay to the right on trails. • Stay away from thin ice, open water and wetlands. • Know the weather forecast. • Make sure headlights and taillights work properly. • Maintain safe distances between other riders. • Reduce your speed when riding at night. • Yield to other motor vehicles and trail users. • Young or beginning riders are encouraged to take a safety training course.

SNOWMOBILE SAFETY

- Do not consume alcohol or take drugs prior to or during your snowmobile trip. Doing so increases your chances of injury or death.
- Slow down and don't cut to the inside of the trail corners. It's dangerous and illegal.
- If you snowmobile at night, don't override your lights.
- Always use the buddy system. Never ride off alone.
- Drowning is one of the causes of many snowmobile fatalities. Whenever possible, avoid the ice.
- Wear sensible, protective clothing designed for operating a snowmobile.
- Use a full size helmet, goggles, or visor to prevent injuries from twigs, stones, ice chips and other debris.
- Avoid wearing long scarves. They may get caught in moving parts of the snowmobile.
- Know the terrain you are going to ride. If unfamiliar to you, ask someone who has traveled over it before.
- Know the weather forecast, especially the ice and snow conditions.
- Be sure your snowmobile is in top-notch mechanical condition throughout the months of use.
- Familiarize yourself with the snowmobile you are driving. Thoroughly read the manual that accompanies the snowmobile.
- Do not pursue domestic or wild animals. That is not the conduct of a sportsman. Report such violations to the nearest law enforcement officer.

Snowmobile Hand Signals

Communication is an essential part of safe riding. Hand signals are a practical way to communicate between other riders and traffic. Be sure to give easy to see and clear hand signals when snowmobiling. Hand signals should never be subtle, but always deliberate.

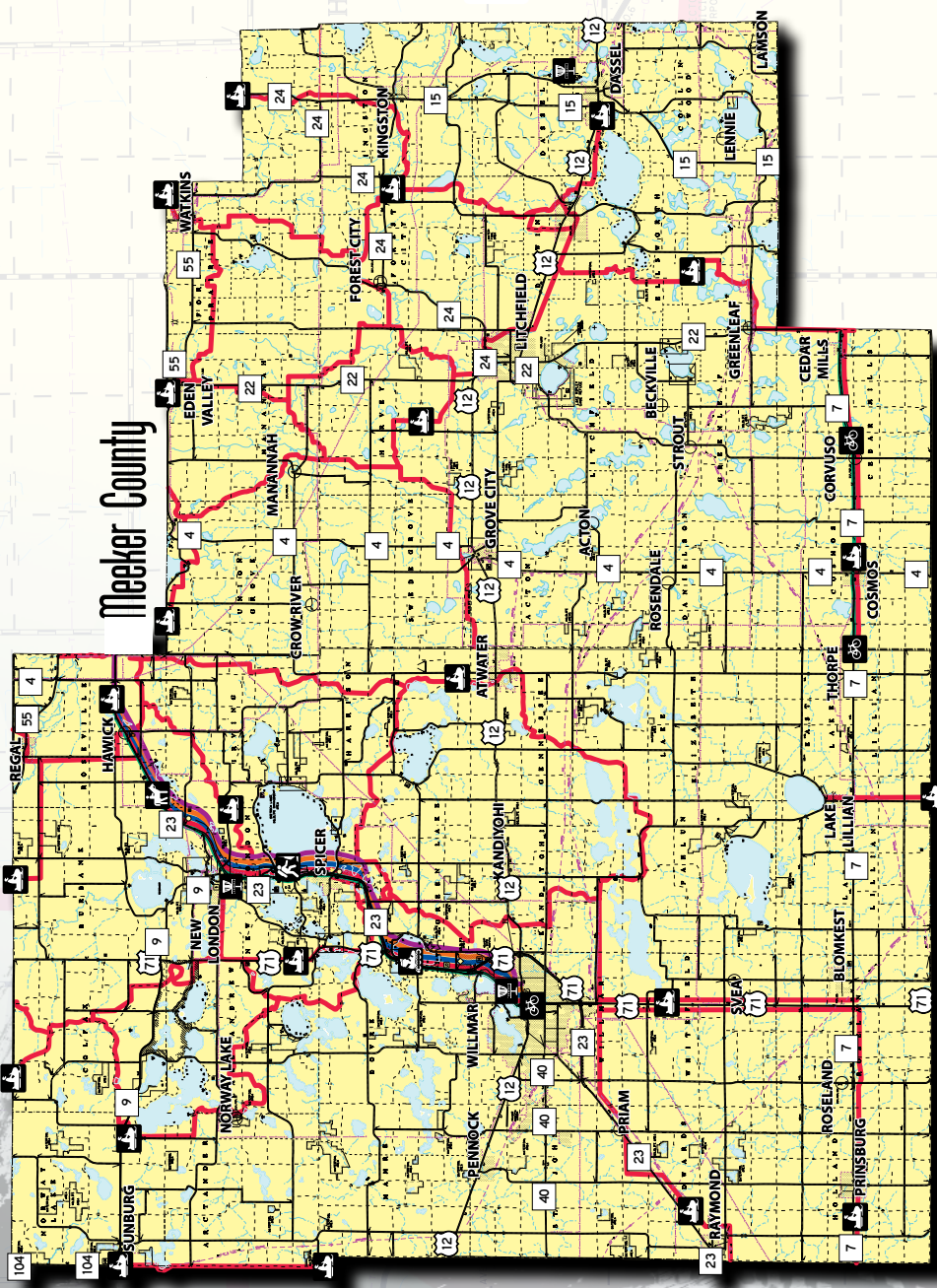


PRIVATE PROPERTY
NO TRESPASSING

Please respect private property and no trespassing signs. Stay on trails. Exercise extreme caution on all lakes and streams. Obey all state and local laws and ordinances. Do not operate snowmobiles/ATVs on county roads or state highways.

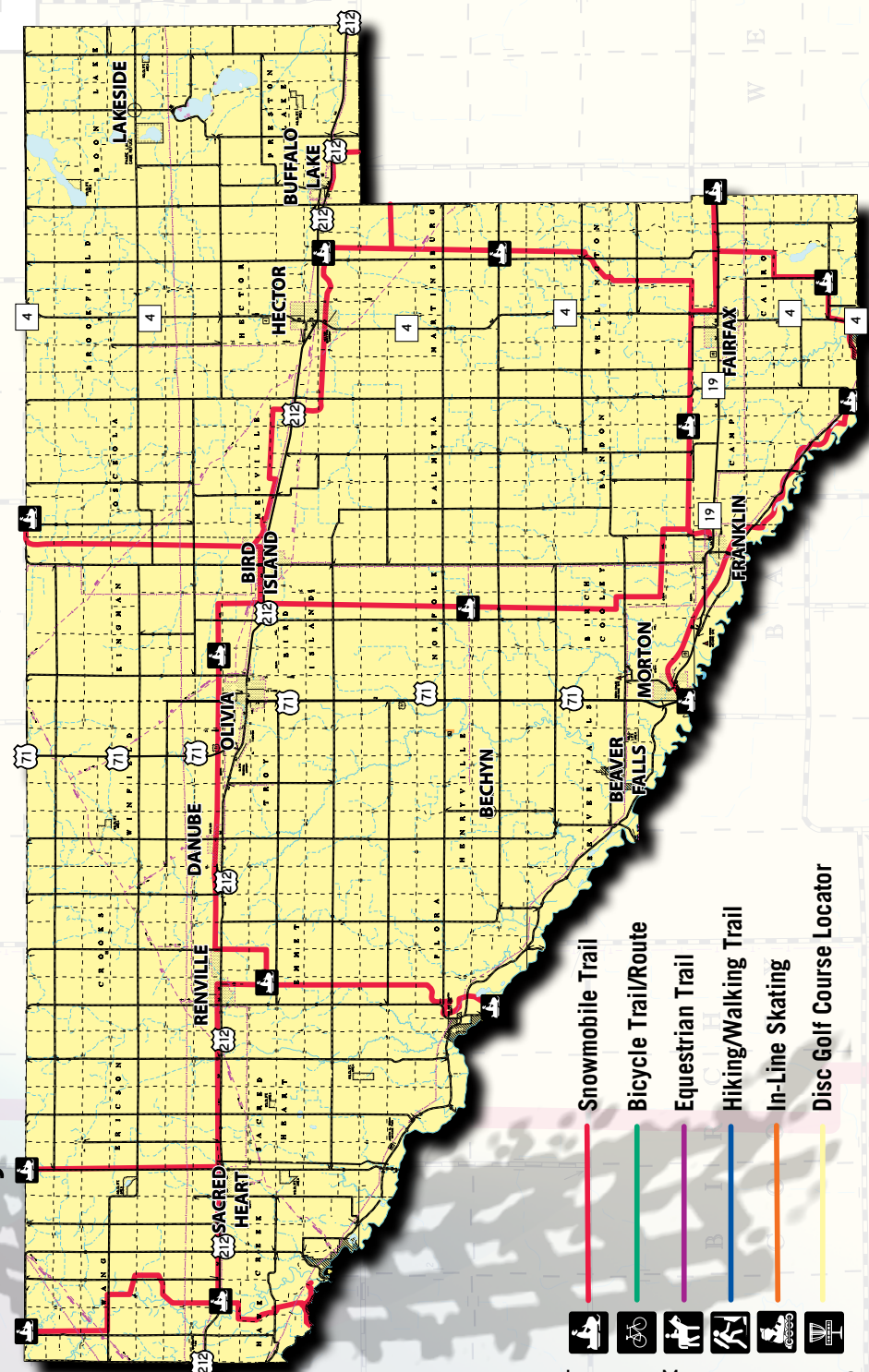
LOCAL AREA TRAILS







Kandiyohi County



Meeker County

Renville County



-  Snowmobile Trail
-  Bicycle Trail/Route
-  Equestrian Trail
-  Hiking/Walking Trail
-  In-Line Skating
-  Disc Golf Course Locator

BUTTERED-UP Steak



Simple meal with a Gourmet Feel

INGREDIENTS

2 steaks (ribeye or sirloin are good choices)

Salt and pepper

2 tablespoons unsalted butter

2 cloves garlic, minced

Fresh herbs (optional)

INSTRUCTIONS

1 Take the steaks out of the refrigerator and let them come to room temperature for about 30 minutes. This helps the steak cook more evenly.

2 Preheat your oven to 400°F.

3 Season the steaks generously with salt and pepper on both sides.

4 Heat a large skillet over high heat until very hot. Add the steaks and cook for about 2-3 minutes per side, until nicely browned.

5 Remove the steaks from the skillet and place them on a baking sheet.

6 In the same skillet, add the butter and garlic. Cook for about 30 seconds, stirring constantly, until the garlic is fragrant.

7 Pour the garlic butter over the steaks on the baking sheet.

8 Place the baking sheet in the oven and cook for about 5-7 minutes for medium-rare doneness, or longer if you prefer your steak more well-done.

9 Remove the steaks from the oven and let them rest for a few minutes before slicing.

10 Serve the steak with any remaining butter from the baking sheet and fresh herbs if desired.

Enjoy your delicious
buttered-up steak!

PREP: 35 MIN • TOTAL: 50 MIN



BARBECUE DO'S:

- use proper barbecue equipment and tools, such as a grill, tongs, and spatulas.
- preheat your grill before placing any food on it.
- marinate your meat before cooking to enhance the flavor.
- keep a close eye on your food while grilling to prevent overcooking or burning.
- use a meat thermometer to ensure that your meat is cooked to the correct internal temperature.
- let your meat rest for a few minutes before slicing or serving to allow the juices to redistribute.
- keep your grill and utensils clean to prevent any foodborne illness.

BARBECUE DON'TS:

- use lighter fluid to start your grill. Instead, use a chimney starter or electric starter.
- overcrowd your grill. Leave enough space between the pieces of meat to ensure even cooking.
- use a fork to flip your meat. Piercing the meat can cause it to lose its juices and become dry.
- baste your meat with sugary sauces too early in the cooking process, as it can burn and create a bitter taste.
- leave cooked meat out in the sun for too long, as it can spoil quickly.
- assume that meat is fully cooked by its color. Always use a meat thermometer to check the internal temperature.
- leave your grill unattended while it's still hot. Always make sure to properly cool it down before leaving it.



So, You have decided to get a pet... NOW WHAT??

Commitment and Time: Owning a pet is a long-term commitment. Before bringing a pet home, consider your lifestyle and ensure you have enough time to spend with your pet. Dogs, cats, and many other animals require attention, exercise, and mental stimulation.

Choose the Right Pet for Your Lifestyle: Different pets have varying needs, temperaments, and activity levels. Research and select a pet that fits well with your lifestyle, living situation, and family dynamics. Whether you choose a dog, cat, bird, fish, or any other animal, make sure you can provide for its specific needs.

Proper Nutrition: Feed your pet a balanced and nutritious diet suitable for their species and age. Consult with a veterinarian to determine the best food options for your pet's health and well-being.

Regular Exercise: Most pets need regular physical activity to stay healthy and happy. Engage in playtime and exercise with your pet daily, as it helps prevent obesity and provides mental stimulation.

Routine Veterinary Care: Schedule regular check-ups with a veterinarian to monitor your pet's health, get necessary vaccinations, and address any concerns. Early detection of health issues can often lead to better outcomes.

Spaying/Neutering: Consider spaying or neutering your pet if you don't plan on breeding. This helps control the pet population and can have health benefits for your pet.

Training and Socialization: Properly train your pet to follow basic commands and have good manners. Socialize them with other animals and people from a young age to prevent behavioral issues later on.

Provide a Safe Environment: Ensure that your home and yard are safe for your pet. Remove hazards, keep toxic substances out of reach, and provide appropriate shelter from extreme weather conditions.

Grooming: Regular grooming is essential for most pets. Brush their fur, trim nails, and clean their ears as needed to keep them comfortable and healthy.

Identification and Microchipping: Keep identification tags with your current contact information on your pet's collar. Consider microchipping your pet as an extra measure to ensure they can be identified if lost.

Love and Attention: Pets thrive on love and attention from their owners. Spend quality time with your pet, provide affection, and build a strong bond.

Respect and Understanding: Learn to understand your pet's body language and behavior. Respect their boundaries and feelings, and avoid forcing them into uncomfortable situations.



Patience and Forgiveness: Pets, especially young ones, can be mischievous or have accidents. Be patient with them during the training process and forgive any mistakes they make along the way.

Emergency Preparedness: Have a plan in place for emergencies, including natural disasters. Know how to evacuate with your pet safely if needed.

If you have just rescued / adopted a new fur baby, please it is important to remember the 3-3-3 RULE:

3 Days:

In the first 3 days being in its new home, they will be feeling overwhelmed, scared & unsure of what is going on. They may also be uncomfortable being "themselves", and may not want to eat or drink. They may want to "shut down" or hide under a bed or in a crate, and they will test boundaries.

3 Weeks:

At this point, they may be a lot more comfortable & settling in. Learning a new routine can be overwhelming, so please be patient. By now they may have figured out the new environment & accepted that this may be their FURever home. Their personality traits will start to show, as well as any behavior issue that may be present.

3 Months:

For most fur babies, 3 months is enough time to finally be comfortable and begin to build trust and a true bond. A sense of security may be present & a set routine will help this process.

Please know that this is not the rule with every rescued or adopted pet, as some may need 6 months to a year to adjust & adapt, depending on MANY factors. Age of animal, what type of an environment did they come from?

City of Willmar Dog Park

1320 22nd Street SW | Willmar | (320) 235-1454

Fancy Coats Dog Park

**Please note: This is a "pay for use" park.*

5300 8th Ave. NE | Willmar (320) 382-6270

Dog Friendly State Parks

Glacial Lakes State Trail

Arena Dr. & Center Dr.

Willmar | (320) 354-4940

Monson Lake State Park

1690 15th St. NE | Sunburg

(320) 354-2055

Sibley State Park

800 Sibley Park Rd. NE

New London | (320) 354-2055

DOG PARKS



Travel

Choosing the
perfect
destination

What is your dream vacation? Do you want to lay on the beach, hike a mountain or explore a city? Questions like these are a good starting point to decide on where to go. Do research on some different areas and activities that may interest you and any others that you are traveling with to identify the most suitable vacation area.

How long do you plan on being gone? Don't try to go too far or jam in to many activities if you don't have the time. Leave some free time in your schedule to accommodate any unforeseen changes during the trip.

Depending on what type of climate you are wanting to vacation in, plan your trip for an appropriate time of the year in that area. Also watch out for peak seasons at some popular vacation destinations. At these times prices may be higher with larger crowds.

Plan:

- Research and learn about the area you are heading to
- Check the Travel Advisories for your intended destination
- Pack the appropriate clothing and supplies you will need for your trip
- Have a backup plan in case of injury or illness while on your trip
- Let friends or family know about your trip

Protect:

- Make sure the food and water in the area is safe to consume
- Protect your skin from the sun and insects
- Don't take any unnecessary risks
- Keep an eye on your health while traveling & when you get back

• Shop • Dine
• Play
• Stay

LOCALLY

...and support the community you live in!