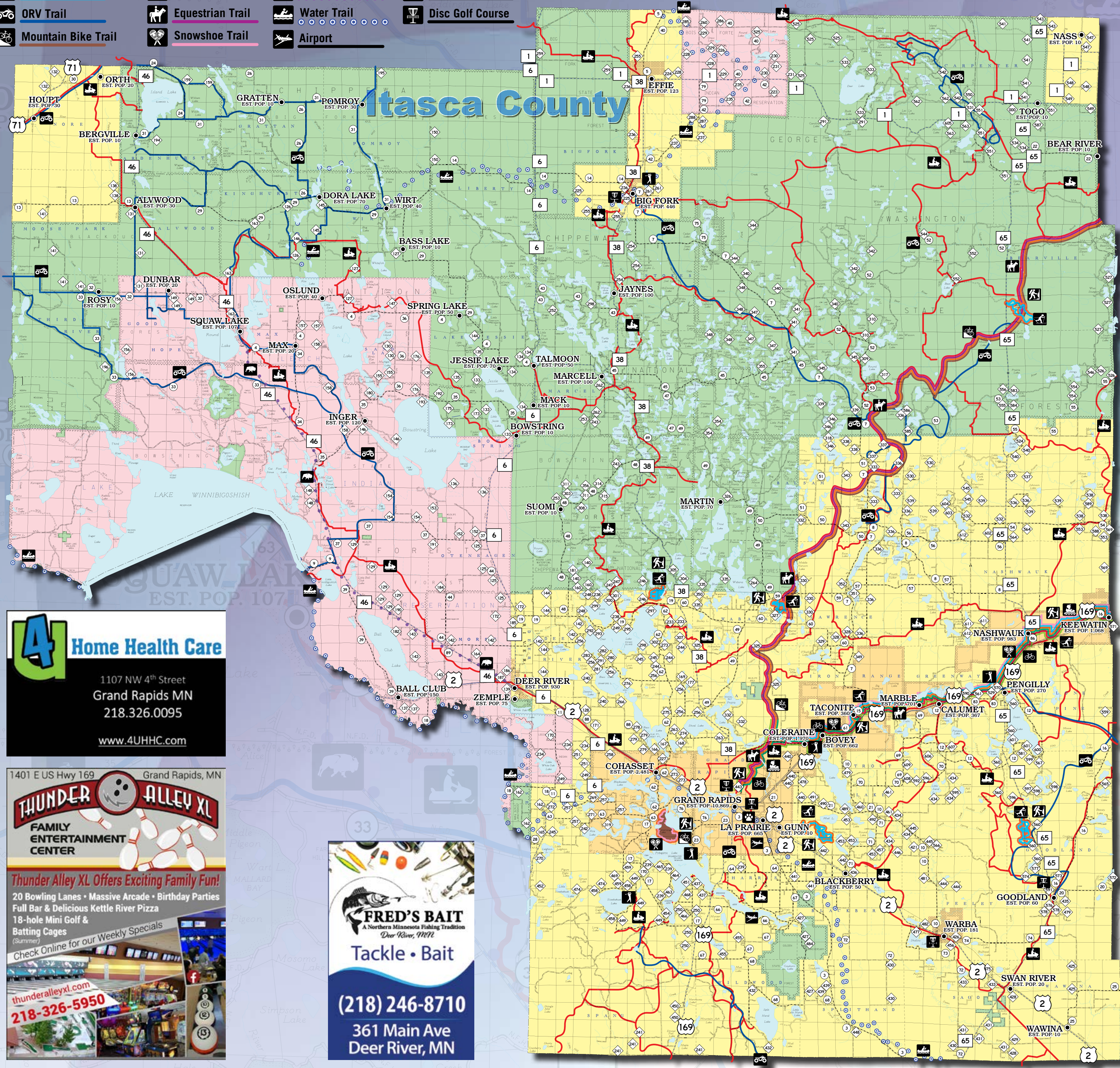


- Hiking/Walking Trail
- Cross-Country Ski Trail
- ORV Trail
- Mountain Bike Trail
- Snowmobile Trail
- Bicycle Trail
- Equestrian Trail
- Snowshoe Trail
- Inline Trail
- Scenic Byway
- Water Trail
- Airport
- Golf Course
- Dog Park Locator
- Disc Golf Course



4 Home Health Care
 1107 NW 4th Street
 Grand Rapids MN
 218.326.0095
 www.4UHH.com

THUNDER ALLEY XL
 FAMILY ENTERTAINMENT CENTER
 1401 E US Hwy 169 Grand Rapids, MN
 Thunder Alley XL Offers Exciting Family Fun!
 20 Bowling Lanes • Massive Arcade • Birthday Parties
 Full Bar & Delicious Kettle River Pizza
 18-hole Mini Golf & Batting Cages
 Check Online for our Weekly Specials (Summer)
 thunderalleyxl.com
 218-326-5950

FRED'S BAIT
 A Northern Minnesota Fishing Tradition
 Deer River, MN
 Tackle • Bait
 (218) 246-8710
 361 Main Ave
 Deer River, MN

Scan QR Code to go to the individual County Page

This free publication is made possible by the advertisers and other local agencies and may not be reproduced. Please support the local advertisers on this publication. Comments and/or suggestions may be directed to: info@lincolnmktg.com

This map is prepared with information provided to us by others, therefore, Lincoln Marketing and the advertisers assume no liability in regards to trails (including accuracy). Please respect private property and no trespassing signs. Stay on trails. Exercise extreme caution on all lakes and streams. Obey all state and local laws and ordinances. Do not operate snowmobiles on county roads or state highways. Posted signs on the trails override the printed map trails.

View this publication online at www.lincolnmktg.com

The SANDWICH OF SANDWICHES
 JIMMY JOHN'S SANDWICHES
 1009 S POKEGAMA AVE • 218.999.5576

LP GAS
 BULK CYLINDERS
 THE MODERN FUEL Wherever you are
RANGE BOTTLE GAS COMPANY
 SCOTT PETERSON, OWNER
 803 Cole St.
 PO Box 157, Coleraine, MN 55722
 (218) 245-3870

AE The Spray Foam Professional
 218-487-6042
 AFFORDABLE ENERGY, LLC
 Homes • Pole Buildings
 Agricultural Buildings
 Roofing
 Residential & Commercial
 FREE ESTIMATES
 Serving: Mid to Northern Minnesota, Western Wisconsin, and Southern North Dakota

The Pickled Loon Saloon
 218-301-0485
 20184 Us Hwy 169, Grand Rapids, MN 55744
 218-763-4402
 44025 Hwy 6, Emily, MN 56447
 All you can eat Blue Gill Fry Mondays Starting at 4pm
 All you can eat Crab Legs Friday Starting at 4pm
 www.thepickledloon.com

ARDENT BICYCLES
 BIKES, SKIS, + OUTDOOR GEAR
 (218) 999-5470
 ardentbicycles.com
 riding@ardentbicycles.com
 Monday - Saturday
 9:00am - 6:00pm
 951 NW 4th St. • Grand Rapids, MN

QUALITY ROOFING & SIDING FOR LESS!
 www.MillersRoofing.net
Miller's Roofing & Siding
 30th Anniversary
 • Gutter & Storm Damage Specialists • Licensed & Insured
 • Residential & Commercial • Free Estimates & Reference List
 • Shingle, Flat & Metal Roofing • Lifetime Soffit & Fascia
 • Seamless Aluminum Gutters • Lifetime Steel & Vinyl Siding
 218-969-0606

Pomps
 TIRE SERVICE, INC.
 201 Hoover Rd. N • Virginia, MN
 (218) 741-5562 • pompstire.com

LR
 Coleraine, MN
 Kitchen Open Mon - Sun 11:00 am - 9:00 pm
 Bar Open Until 12:00 am (Monday - Saturday)
 Enjoy Great Food & Live Music
 Just off the Keystone Trail • 403 Roosevelt Ave. • Coleraine, MN
 218-245-3976 • lockerroombarandgrillmn.com

The Balsam Store
 Gas • Groceries • ATM • Deli Express • 24 Hour Pay at the Pump
 Gift Shop • Sporting Goods • Ice • Bait • Tackle • Propane • Lottery Tickets
 Liquor Store • Hardware • Hunting Licenses • Free Parking
 New & Improved Gas/Diesel Pumps
HEWITT
 DOCKS • LIFTS • PONTOON LEGS
 Hewitt docks, lifts, kayaks & swim rafts
 218-910-9595
 In the Heart of Balsam
 at the intersection of Scenic Hwys 7 & 8
 Just off the Taconite on the Delbert Brandstrom Trail

Free LOCAL AREA Map
 WITH RECREATIONAL TRAILS
 Itasca County with Grand Rapids, Minnesota
 LincolnMarketing

Smoke on the Water is a production wine and cider facility located in a renovated fire hall on the North side of beautiful Trout Lake in Coleraine, MN.
 • Wood Fire Kitchen
 • Evolving menu Featuring Pizzas
 • Specialty Bar with Handcrafted Seasonal Cocktails, Mocktails, Wine, Ciders & Beer
 • Comfortable, Casual Atmosphere
Smoke on the Water Co.
 WINERY / WOOD FIRE
 (218) 245-1662 • SmokeOnTheWaterWinery.com
 94 Roosevelt Ave, Coleraine MN

At Unwined Up North, we pride ourselves on working closely and almost exclusively with Minnesota-based brands, creators and companies.
UNWINED UP NORTH
 Wine • Taps • Bottles • Cans
 Menu Flexibility • Family Friendly
 Freshly-Made Food • Board games
 Trivia Nights • Date Nights
 Live Patio Music All Summer
 Alcohol-Infused Adult Art Classes
 UnwinedUpNorthMN.com • (218) 999-9234 • 31 3rd St NE, Grand Rapids MN

Shop • Dine
 Play • Stay
LOCALLY
 ...and support the community you live in!

GUIDE SERVICES MAINTENANCE REPAIRS RENTALS

ARDENT BICYCLES
BIKES, SKIS, + OUTDOOR GEAR

(218) 999-5470 Monday - Saturday
ardentbicycles.com 9:00am - 6:00pm
riding@ardentbicycles.com

951 NW 4th St. • Grand Rapids, MN

1401 E US Hwy 169 Grand Rapids, MN

THUNDER ALLEY XL
FAMILY ENTERTAINMENT CENTER

Thunder Alley XL Offers Exciting Family Fun!
20 Bowling Lanes • Massive Arcade • Birthday Parties
Full Bar & Delicious Kettle River Pizza
18-hole Mini Golf & Batting Cages (Summer)
Check Online for our Weekly Specials

thunderalleyxl.com
218-326-5950

QUALITY ROOFING & SIDING FOR LESS!

Miller's Roofing & Siding
www.MillersRoofing.net

- Hail & Storm Damage Specialists • Licensed & Insured
- Residential & Commercial • Free Estimates & Reference List
- Shingle, Flat & Metal Roofing • Lifetime Soffit & Fascia
- Seamless Aluminum Gutters • Lifetime Steel & Vinyl Siding

218-969-0606

Pomp's
TIRE SERVICE, INC.

201 Hoover Rd. N • Virginia, MN
(218) 741-5562 • pompstire.com

FRED'S BAIT
A Northern Minnesota Fishing Tradition
Deer River, MN

Tackle • Bait

(218) 246-8710
361 Main Ave
Deer River, MN

LR **LOCKERROOMBARANDGRILLMN.COM**

Kitchen Open Mon - Sun 11:00 am - 9:00 pm
Bar Open Until 12:00 am (Monday - Saturday)

Enjoy Great Food & Live Music

Just off the Keystone Trail • 403 Roosevelt Ave. • Coleraine, MN

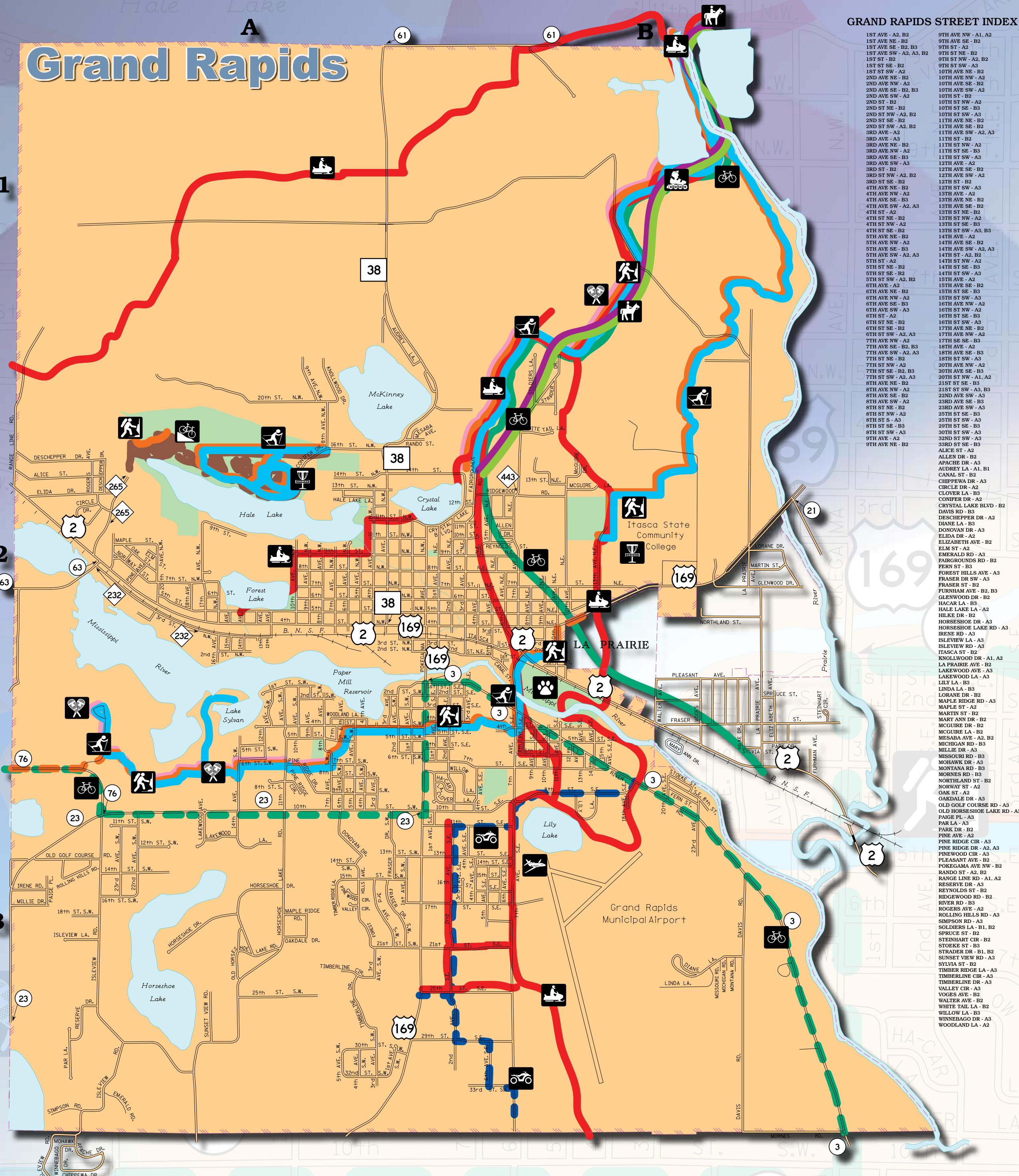
4 Home Health Care

1107 NW 4th Street
Grand Rapids MN
218.326.0095
www.4UHC.com

Advertising Made Simple

Call: 651-788-9323
or 651-756-1048

LincolnMarketing



Free LOCAL AREA Map
WITH RECREATIONAL TRAILS

Itasca County with Grand Rapids, Minnesota

LincolnMarketing

Smoke on the Water is a production wine and cider facility located in a renovated fire hall on the North side of beautiful Trout Lake in Coleraine, MN.

- Wood Fire Kitchen
- Evolving menu featuring Pizzas
- Specialty Bar with Handcrafted Seasonal Cocktails, Mocktails, Wine, Ciders & Beer
- Comfortable, Casual Atmosphere

Smoke on the Water Co.
WINERY / WOOD FIRE

(218) 245-1662 • SmokeOnTheWaterWinery.com
94 Roosevelt Ave, Coleraine MN

At Unwined Up North, we pride ourselves on working closely and almost exclusively with Minnesota-based brands, creators and companies.

UNWINED UP NORTH

Wine • Taps • Bottles • Cans
Menu Flexibility • Family Friendly
Freshly-Made Food • Board games
Trivia Nights • Date Nights
Live Patio Music All Summer
Alcohol-Infused Adult Art Classes

UnwinedUpNorthMN.com • (218) 999-9234 • 31 3rd St NE, Grand Rapids MN

The Balsam Store

Gas • Groceries • ATM • Deli Express • 24 Hour Pay at the Pump
Gift Shop • Sporting Goods • Ice • Bait • Tackle • Propane • Lottery Tickets
Liquor Store • Hardware • Hunting Licenses • Free Parking

New & Improved Gas/Diesel Pumps

HEWITT
BOOKS • GIFTS • PORTION LEGS
Hewitt docks, lifts, kayaks & swim rafts

218-910-9595
In the Heart of Balsam
at the intersection of Scenic Hwys 7 & 8
Just off the Taconite on the Delbert Brandstrom Trail

- ORV Route
- Hike Trail/Route
- Snowshoe Trail
- Equestrian Trail
- Mt. Bike Trail
- Dog Park
- Bike Trail/Route
- Snowmobile Trail/Route
- Nordic Ski Trail
- Inline Trail
- Airport
- Disc Golf Course

Scan QR Code to go to the individual County Page

This free publication is made possible by the advertisers and other local agencies and may not be reproduced. Please support the local advertisers on this publication. Comments and/or suggestions may be directed to: info@lincolnmktg.com

This map is prepared with information provided to us by others, therefore, Lincoln Marketing and the advertisers assume no liability in regards to trails (including accuracy). Please respect private property and no trespassing signs. Stay on trails. Exercise extreme caution on all lakes and streams. Obey all state and local laws and ordinances. Do not operate snowmobiles on county roads or state highways. Posted signs on the trails override the printed map trails.

View this publication online at www.LincolnMarketing.us

The SANDWICH OF SANDWICHES

JIMMY JOHN'S SANDWICHES

1009 S POKEGAMA AVE • 218.999.5576

LP GAS BULK CYLINDERS
THE MODERN FUEL Wherever you are

RANGE BOTTLE GAS COMPANY

SCOTT PETERSON, OWNER
803 Cole St.
PO Box 157, Coleraine, MN 55722
(218) 245-3870

AE The Spray Foam Professional
218-487-6042

AFFORDABLE ENERGY, LLC Homes • Pole Buildings
Agricultural Buildings Roofing

Residential & Commercial

FREE ESTIMATES

Serving: Mid to Northern Minnesota, Western Wisconsin, and Southern North Dakota

The Pickled Loon Saloon

218-301-0485
20184 Us Hwy 169, Grand Rapids, MN 55744

218-763-4402
44025 Hwy 6, Emily, MN 56447

All you can eat Blue Gill Fry Mondays Starting at 4pm

All you can eat Crab Legs Friday Starting at 4pm

www.thepickledloon.com

Shop • Dine
Play • Stay

LOCALLY

...and support the community you live in!