

FREE LOCAL AREA GUIDE

Attractions & Events • Park & Rec. Info
Area History • Hunting & Fishing Seasons...

Washburn & Barron
Counties, Wisconsin

LincolnMarketing
www.lincolnmarketing.us



SCAN FOR A DIGITAL COPY



FIND YOUR FORTUNE



I did!

ST. CROIX CASINOS

TURTLE LAKE • DANBURY • HERTEL

Bet on FUN at St. Croix Casinos!
Try your luck on Slots, Blackjack, Poker,
Craps, Roulette and **SPORTS BETTING!**
Visit GoPlayWin.com for more information.
No table games offered at our Hertel location.

TURTLE LAKE CASINO 1.800.846.8946 | DANBURY CASINO 1.800.238.8946 | HERTEL CASINO 715.349.5658

INSPIRED ADVENTURE.



WHITETAIL RIDGE CAMPGROUND

BACKWOOD'S SALOON *and*
"MY SARONA" HOUSE RESTAURANT



Enjoy the **BEAUTY,**
PEACEFULNESS *and*
DELICIOUS FOOD of the
GREAT "UP-NORTH"

(715) 469-3309

whitetailridgecampground.com

N753 Shallow Lake Rd, Sarona, WI

**BOOK
YOUR
STAY
ONLINE
HERE!**



Northside CAFE

930 Haugen Ave.
Rice Lake, WI

715-434-3441

northsidecafericelake.com

Dine-In & Take-Out

Sunday-Tuesday
6am-2pm
Wednesday-Saturday
6am-8pm

Breakfast Lunch Dinner



come in for our specials!



**Protect your investment now.
Contact us 715-357-8218**



PROFLEETCARE

An annual spray keeps rust away!

- RUST CONTROL SERVICE AT YOUR FARM OR BUSINESS
- REDUCE EQUIPMENT AND EMPLOYEE DOWNTIME
- INCREASE EQUIPMENT AND VEHICLE LIFE
- REDUCE OPERATING AND REPAIR COSTS

**ALSO
SERVICING
PERSONAL
VEHICLES**

www.profleetcare.com

SPORTSMAN'S HEADQUARTERS

BAIT • TACKLE • GUNS • AMMO • BOWS
LICENSES • DOCKS • LIFTS • CLOTHING
FULL BAR & APPETIZERS

LOCATED ON THE CORNERS OF HWY. 53 & 77
NEXT TO LINK STOP'S A&W • 715-466-2171



For career opportunities, visit
www.polaris.com/careers



POLARIS
OSCEOLA

108 Industrial Drive, Osceola, WI 54020

TABLE OF CONTENTS

- 2-3 Local Area Events
- 4-5 Residential Services
- 6 Washburn County History
- 7 Washburn County Communities
- 8 Barron County History
- 9 Barron County Communities
- 14-15 Parks & Recreation
- 16 Local Area Attractions
- 20-21 DNR License Centers
- 22-23 Hunting Seasons
- 24 Fishing Seasons
- 30-31 Area Trails



Scan the QR Code to
go to the individual
county page.

Washburn County



Barron County



This free publication is made possible by the advertisers and other local agencies
and may not be reproduced. Please support the local advertisers on this publication.
Comments and/or suggestions may be directed to: info@lincolnmarketing.us

View this publication online at www.lincolnmarketing.us

LOCAL AREA EVENTS

January

Stone Lake Bait & Tackle Fishing Contest (Jan-Mar)
Chetek Firefighters Ice Fishing Contest

February

Chetek Winterfest
RV & Boat Show (Feb-March) | Rice Lake
Barron County Model Railroad Show | Rice Lake
Snow Outlaws Winter Nationals | Rice Lake
Barron County Ride with the Queen

March

Rice Lake Speedway Stock Car Show

April

Jacks are Wild Food & Wine Tasting | Spooner
Spring is in the Air Craft & Vendor Market |
Rice Lake
Chetek Annual Banquet
Annual Easter Egg Hunt | Birchwood
Easter EGG-STRAVAGANZA | Spooner
Shell Lake Easter Egg Hunt

May

Steel Showdown Car Show | Stone Lake
Stamp Out Hunger Food Drive | Area Wide
Canoe & Wooden Boat Show | Spooner
Bluegill Fishing Contest | Chetek
City Wide Garage Sale (May-June) | Chetek
City wide Garage Sale | Rice Lake
Rice Lake Farmers Market (May-Oct)
Chetek Farmers Market (May-Sept, Saturdays)

June

Camerama Festival | Cameron
Rice Lake Aquafest
Hungry Hollow Steam Engine Days | Rice Lake
Family Festival | Spooner
Jack's a Hack Golf Tournament | Spooner
Tri-County Dairy Breakfast | Spooner
Back the Blue Car Show | Rice Lake
Taste of Chetek
Quilt Show & Strawberry Fest | Cameron
Annual Outdoor Flea Market | Cameron
Kids Fishing Derby | Rice Lake
Music in the Park (June-Aug) | Rice Lake
Summer Solstice Paddle | Sarona
Chetek Wine Walk
Safety Fair & Bike Rodeo | Rice Lake
Cakes at the Lake | Sarona
Barron County Pro Rodeo | Rice Lake
Rice Lake Celebrity Charity Classic & Walk

July

Bluegill Festival | Birchwood
4th of July Fireworks | Birchwood, Long Lake
Spooner Fireworks & Street Dance
Heritage Days | Cameron
Liberty Fest | Chetek
Barron County Fair | Rice Lake
Heart of the North Spooner Rodeo
Washburn County Fair | Spooner
Shell Lake Street Dance
Shell Lake Art Festival
Inter-County Fair | Turtle Lake
Turtle Lake Turtle Trot
Turtle Lake Parade
Chetek Brew & Rib Fest
Minong Farm and Flea Market
Annual Shell Lake Lions Triathlon
Summer Crazy Days | Rice Lake

August

Rutabaga Festival | Cumberland
Haugen Fun Days
Jack Pine Savage Days | Spooner
Cars, Crafts & Rock-N-Roll in the Park | Turtle Lake
Annual Minong Summer Days Festival
Annual Northwoods Ukulele Festival | Shell Lake
National Night Out | Area Wide
Haugen Fun Days
Northwest Wisconsin Gem & Mineral Show |
Rice Lake
Old Fashioned Fair at Pioneer Village | Cameron
Chetek Crazy Days
Great Wisconsin Campout | Minong
Town & Country Days (Aug-Sept) | Shell Lake
Water Mania Power Boat Racing Chetek
Chetek Hydroflites Water Show
Chocolate Festival | Shell Lake
Annual Cleanup Days | Trego

September

Bluegrass Festival | Cameron
Harvest Fest Days | Chetek
Septemberfest | Minong
Annual Birchwood Area Garage Sales
The Fall Farmers Market at Perlick Distillery |
Sarona
Oktoberfest at Pioneer Village | Cameron
Red Cedar River Rendezvous | Cameron
Rice Lake Fall Festival

October

Dallas Oktoberfest
Great Pumpkin Train | Spooner
Annual Cranberry Festival | Stone Lake
Northwoods Trunk or Treat | Minong
5k Zombie Run | Spooner
Witches Brew & Warlocks Too Bar Crawl | Chetek
Kids Halloween Party | Chetek
Annual Stone Lake Lions Fish Fry
Annual Wine & Beer Festival | Rice Lake

November

Holiday Arts & Crafts Show (Nov-Dec) |
Rice Lake
Ladies Night Out | Spooner
Santa's Pizza Party Train Ride (Nov-Dec) | Trego
Small Business Saturday | Area Wide
Holiday Craft Sale | Minong

December

New Year's Eve Dinner & Dance | Spooner
Christmas Fest | Birchwood
Christmas Lights in the Park | Turtle Lake
Turtle Lake Chamber Christmas with Santa
Winter Solstice Luminary Hike | Sarona
Santa's Arrival & Family Fun Day | Chetek

**Events are subject to change.*

WASHBURN COUNTY

Administration	(715) 468-4624
Aging/ADRC.....	635-4460
Circuit Court Judge	468-4680
County Clerk	468-4600
District Attorney	468-4670
Emergency Management	468-4730
Extension	635-3506
Forestry	635-4490
Highway	635-4480
Health & Human Services	635-4400
Information Technology	468-4660
Land & Water Conservation.....	468-4654
Maintenance	468-4655
Register of Deeds	468-4616
Sheriff	468-4700
Treasurer	468-4650
Veteran Services	635-4470
Zoning	468-4690

BARRON COUNTY

Administration	(715) 537-6841
Aging/ADRC.....	(888) 538-3031
Child Support	537-6390
Circuit Court	537-6262
County Clerk	537-6200
District Attorney	537-6220
Extension	788-6240
Forestry	537-6296
Highway	637-3755
Health & Human Services	537-5691
Maintenance, Parks & Recreation.....	537-6365
Register of Deeds	537-6210
Soil & Water Conservation	537-6315
Sheriff	537-3106
Treasurer /Real Property Lister.....	537-6280
Veteran Services	537-6290
Zoning	537-6375

For All Your HVAC, Metal/Rubber Roofing, & Sheet Metal Fabrication Needs.
 Crane Rentals • Free Estimates
 24/7 Emergency Service



PAUL'S SHEET METAL, INC.
 RICE LAKE, WI

715-234-7707 • PaulsSheetMetal.com





Once home to Sioux and Chippewa Indians, Washburn County was settled in the 1860s. Loggers began to arrive to harvest white and Norway pines, and waterway ports, utilized to transport lumber, became communities. Shell Lake was selected as the County Seat and as the industry diversified, the area continued to grow and develop. Between 1900 and 1910, the population of Washburn County grew from 5,521 to 8,196. The many lakes located within Washburn County made the area a popular tourist destination and now is recognized as the Walleye Capital of Wisconsin and home to the largest Muskie hatchery. Today Washburn County is home to approximately 16,712 residents.

VILLAGES:

- BIRCHWOOD** – pop. 548
- MINONG** – pop. 565
- SPOONER** – pop. 686

TOWNS:

- BARRONETT** – pop. 458
- BASHAW** – pop. 881
- BASS LAKE** – pop. 558
- BEAVER BROOK** – pop. 708
- BIRCHWOOD** – pop. 495
- BROOKLYN** – pop. 314
- CASEY** – pop. 472
- CHICOG** – pop. 375

- EVERGREEN** – pop. 1,102
- FROG CREEK** – pop. 279
- GULL LAKE** – pop. 169
- LONG LAKE** – pop. 746
- MADGE** – pop. 475
- MINONG** – pop. 877
- SARONA** – pop. 412
- SHELL LAKE (COUNTY SEAT)** – pop. 1,347
- SPOONER** – pop. 2,655
- SPRINGBROOK** – pop. 529
- STINNETT** – pop. 251
- STONE LAKE** – pop. 578
- TREGO** – pop. 914

**Populations are approximate.*

BIRCHWOOD

Attracted to the ample timber and pristine lakes, Birchwood was first settled in the 1880s. Early industry included logging and farming. As the railroad arrived, Birchwood continued to grow and a variety of businesses were thriving by 1900. Birchwood became a popular tourist destination due to its proximity to a variety of lakes, and is now recognized as the Bluegill Capital of Wisconsin. Today Birchwood is home to approximately 548 residents.

SARONA

Once part of Bashaw, Sarona was established in 1904 and named in honor of the biblical place Sharon, and Sauer after an early settler. As the railroad arrived, Sarona began to thrive. The area has now become a popular area for outdoor enthusiasts and is home to the Hunt Hill Nature Center and Audubon Sanctuary. Today Sarona is home to approximately 412 residents.

SHELL LAKE (COUNTY SEAT)

Shell Lake began as a logging community in the 1880s. As the railroad arrived, Shell Lake began to develop and businesses began to thrive. Selected as the County Seat, Shell Lake continued to grow and the industry began to diversify. It is home to the largest landlocked seepage lake in Wisconsin and draws thousands of visitors annually. Today Shell Lake is home to approximately 1,347 residents.

SPOONER

Spooner began as a railway community named Chandler in 1879. Chandler was renamed in honor of John Coit Spooner, a local railroad advocate, legislator, attorney and politician in 1883. Settlers began to arrive by train and steamboat and Spooner continued to grow. Businesses were established and the area came to be recognized as a tourist destination. Today Spooner is home to approximately 2,655 residents.

TREGO

Trego began as a lumbering community and was once known as the Superior Junction. Trego was founded in 1904 as the town of Mills and in 1906 the name was changed to Trego. The community has since become a haven for recreational activities due to its proximity to lakes and forest. Today Trego is home to approximately 914 residents.



*B*arron County was once home to Sioux and Chippewa Indians. First established in 1859 as Dallas County, in 1869 it was renamed Barron County. The area quickly grew as a logging and lumbering center. Communities were established near railways, waterways and lumber camps, and the city of Barron was selected as the County Seat. Settlers arrived to take part in the lumber industry and others established farms on land cleared by loggers. By 1920 the population of Barron had reached 34,281 and as industry began to diversify, the area continued to grow. Today Barron County is home to approximately 45,590 residents.

CITIES:

BARRON (COUNTY SEAT) – pop. 3,423

CHETEK – pop. 2,140

CUMBERLAND – pop. 2,240

RICE LAKE – pop. 8,257

VILLAGES:

ALMENA – pop. 736

CAMERON – pop. 1,707

DALLAS – pop. 346

HAUGEN – pop. 270

NEW AUBURN – pop. 558

PRAIRIE FARM – pop. 498

TURTLE LAKE – pop. 1,029

TOWNS:

ALMENA – pop. 891

ARLAND – pop. 675

BARRON – pop. 1,008

BEAR LAKE – pop. 624

CEDAR LAKE – pop. 995

CHETEK – pop. 1,703

CLINTON – pop. 967

CRYSTAL LAKE – pop. 809

CUMBERLAND – pop. 916

DALLAS – pop. 582

DOVRE – pop. 726

DOYLE – pop. 594

LAKELAND – pop. 952

MAPLE GROVE – pop. 1,044

MAPLE PLAIN – pop. 904

OAK GROVE – pop. 991

PRAIRIE FARM – pop. 646

PRAIRIE LAKE – pop. 1,408

RICE LAKE – pop. 2,900

SIoux CREEK – pop. 796

STANFOLD – pop. 749

STANLEY – pop. 2,262

SUMNER – pop. 706

TURTLE LAKE – pop. 647

VANCE CREEK – pop. 814

**Populations are approximate.*

BARRON (COUNTY SEAT)

The City of Barron was established in 1860 and incorporated in 1887. It was originally named Quaderer's Camp after local lumber foreman John Quaderer. The name was changed to Barron in honor of Henry D. Barron after the location became the county seat of Barron County. The first school was built in 1877 and burnt down in 1881 due to a lightning strike. Today Barron is home to approximately 3,423 residents.

CAMERON

Established in the 1880s, Cameron began as a logging and trading center. It was named in honor of Senator Angus Cameron of Wisconsin, an active member of civic affairs. As the railroad arrived, Cameron continued to develop and businesses, general stores and mills were thriving. Today Cameron is home to approximately 1,707 residents.

CHETEK

Once a trading post, Chetek was first settled in 1866. A school was established in 1871 and the community was platted in 1875. As the railroad arrived in 1882, Chetek began to develop and was then incorporated as a city in 1891. Businesses and mills were thriving, and by 1903 telephone service was established. Today Chetek is home to approximately 2,140 residents.

CUMBERLAND

Cumberland was founded in 1880 as a lumber and logging center. Large mills were built and the area boasted more saw mills than any other area in the country. By 1890 its population reached 1,486 and the area continued to grow. Today Cumberland is home to approximately 2,240 residents.

RICE LAKE

In 1874 Knapp, Stout & Co. platted the community known as Rice Lake. It was named after the abundant rice beds that filled the local lowlands and quickly became lumbering camp. Settlers arrived to take part in the logging business, and by 1885 the population of Rice Lake tripled. In 1890 Rice Lake was home to a variety of mills, a newspaper, brewery, post office, furniture store and specialty shops. As the railroad arrived, Rice Lake continued to develop and the community became a retail trading center. Today Rice Lake is home to approximately 8,257 residents.

TURTLE LAKE

First settled in 1875, Turtle Lake was originally known as Skowhagen. The area began to grow as logging and lumbering camps were established. The community was renamed Turtle Lake after government surveyors noticed an array of turtle eggs along the local shorelines. In 1879 a post office was built with Stephen Richardson serving as its first postmaster. The community was platted in 1898 and Turtle Lake was officially incorporated. Today Turtle Lake is home to approximately 1,029 residents.

BARRON COUNTY FACTS

- **County Seat:** The county seat of Barron County is Barron, a city located in the northwestern part of the county.
- **Name Origin:** Barron County was named after Henry D. Barron, who was a lawyer, judge, and politician in WI.
- **Geography:** The county is situated in northwestern Wisconsin and is known for its mix of forested areas, lakes, rivers, and agricultural land.
- **Rice Lake:** Rice Lake, a city within Barron County, is named after the nearby Rice Lake, which is the largest lake entirely within the county's borders. The lake is popular for fishing, boating, and water sports.
- **Outdoor Recreation:** Barron County offers a wide range of outdoor recreational activities, including hunting, fishing, camping, hiking, and ATV trails.
- **Red Cedar State Trail:** This scenic trail runs through Barron County and connects the cities of Menomonie and Rice Lake. It's popular for biking, walking, and snowmobiling.
- **Cranberry Production:** Barron County is a significant cranberry-producing area in Wisconsin. The county's sandy soils and climate are conducive to cranberry cultivation.
- **Chetek Chain of Lakes:** The Chetek Chain of Lakes consists of six interconnected lakes and is a popular destination for fishing, boating, and water recreation.
- **Beaver Dam Lake:** Beaver Dam Lake, located near the city of Cumberland, is known for its natural beauty and outdoor activities.
- **Blue Hills:** The Blue Hills, a scenic range of hills and forests, is located in the southeastern part of Barron County. It offers hiking, bird-watching, and other outdoor experiences.
- **Farm Technology Days:** Barron County has hosted Wisconsin Farm Technology Days, an annual agricultural event that showcases the latest advancements in farming technology and practices.
- **Pioneer Village Museum:** The Pioneer Village Museum, located in Cameron, features historic buildings and artifacts that provide a glimpse into the area's past.
- **Native American History:** The region that is now Barron County was originally inhabited by various Native American tribes, including the Ojibwe. The area has historical and cultural significance for these communities.
- **Logging & Lumber Industry:** Like many areas in Wisconsin, Barron County was historically involved in the logging and lumber industry, which played a role in its early development.
- **Festivals & Events:** Barron County hosts various festivals and events throughout the year, celebrating its heritage, agriculture, and community spirit.

WASHBURN COUNTY FACTS

- **County Seat:** The county seat of Washburn County is Shell Lake, a small city located in the heart of the county.
- **Name Origin:** Washburn County was named after Cadwallader C. Washburn, a prominent Wisconsin politician and businessman who served as a governor and member of Congress.
- **Lakes & Waterways:** Washburn County is known for its abundance of lakes and waterways. It's often referred to as the "Lakes Region" of Wisconsin, with over 900 lakes in the county, providing ample opportunities for fishing, boating, and watersports.
- **Outdoor Recreation:** The county offers a range of outdoor activities, including camping, hiking, biking, and wildlife viewing. The area's natural beauty attracts outdoor enthusiasts throughout the year.
- **Namekagon River:** The Namekagon River, a tributary of the St. Croix River, flows through Washburn County. It is a designated National Wild and Scenic River, known for its scenic beauty and recreational opportunities.
- **Trego Lake:** Trego Lake, located in the county, is known for its clear waters and is a popular spot for fishing, swimming, and boating.
- **Hunting Destination:** Washburn County is a destination for hunting, with opportunities for deer, bear, turkey, and small game hunting. The area's forests and woodlands provide habitats for various game species.
- **Winter Activities:** During the winter months, Washburn County offers activities such as snowmobiling, cross-country skiing, and ice fishing.
- **Heartwood Conference Center & Retreat:** This center is located in Trego and offers conference facilities, lodging, and outdoor recreational opportunities in a peaceful setting.
- **Stone Lake Cranberry Festival:** The nearby Stone Lake Cranberry Festival, though not in Washburn County itself, is a popular annual event. It celebrates the cranberry harvest with crafts, food, and entertainment.
- **Railroad History:** Washburn County has a history tied to the railroad industry, which played a role in its development and growth.
- **Art & Culture:** The county has a vibrant arts and culture scene, with local galleries, artisan shops, and cultural events that showcase the talents of local artists and craftspeople.
- **Namekagon Barrens Wildlife Area:** This area is known for its unique ecosystems, including pine barrens and oak savannas, providing habitat for various plant and animal species.
- **Historical Sites:** Washburn County has historical sites and museums that offer insights into the area's past, including its early settlement and development.

PIONEER VILLAGE MUSEUM



The Barron County Historical Society's Pioneer Museum has something for everyone. Located between Barron and Cameron on Hwy W, the museum has 35 buildings of historic artifacts and displays to explore.

Visitors can wind their way through "the Village," which includes historic log buildings and shops from days gone by. They will see the historic Ebenezer Lutheran Church, a post office, general store, doctor's office, dentist office, gas station, barbershop, meeting house, town hall, jail, newspaper office, and a blacksmith shop. They can see how early immigrant families in Barron County lived, sit at a desk in a one-room country school, and check out the railroad depot. There is even a complete farmstead.

Many large display buildings house collections of everything from pedal cars and cast iron toys, to outboard motors. Visitors can see restored tractors, antique cars, "rooms" that show a "Depression-era" kitchen, a bank teller's window, office equipment, washing machines, apothecary items, and wood carvings, just to name a few. A climate-controlled exhibition hall houses 40 glass front cases with ever-changing exhibits of life in Barron County. A box factory and creamery, and lots of farm equipment, are also on display. A native plant rain garden, and a vegetable garden with a historical theme provide additional educational opportunities.

During Heritage Days, always held the weekend following 4th-of-July weekend, visitors may be able to see some of the following in action: the blacksmith shop, box factory, wringer washer, butter churn, weavers making hand-loomed rugs, children's games, and many other demonstrations, including live music in the Pavilion.

The Museum is open Thursday, Friday, and Sunday from 1-5pm, and Saturdays 10am-5pm, June through August. There are many rest and picnic areas, modern rest room facilities, and a gift shop filled with museum souvenirs and locally hand crafted items. An old-fashioned Saloon sells sarsaparilla, fresh popcorn, and other treats. Other food is available during special events.

The Cultural Arts Building is climate controlled with inside and outside seating, and can be rented for meetings, reunions, or parties. The Church can also be rented for weddings or services. Check the website at www.barroncountymuseum.com for the 2023 special events calendar, fees, and forms.

06.23.2007

Link Stop's



ALL AMERICAN FOOD

SIREN



7389 Airport Rd.
715-349-5164

IRON RIVER



7885 Old US Hwy 2
715-372-4202

MINONG



Corners of Hwy 53 & 77
715-466-5929
(Next to Sportsmen's
Headquarters)



THREE GREAT LOCATIONS!

LIVE & WORK | WHERE YOU PLAY!

In Barron County You'll Experience:

Low cost living & great career options with competitive wages.
Excellent educational system - UW Eau Claire - Barron Campus,
Northwood Technical College, & amazing k12 schools.
Up-to-date healthcare systems.
A great place to raise your family - low crime rate & friendly
vibrant, communities.

Barron County Economic Development

800-529-4148

To find out more information about
what Barron County has to offer visit
www.visitbarroncounty.com



Greenline Truss LLC

RESIDENTIAL & COMMERCIAL

We can make
custom trusses to
fit your needs!

FREE
Estimates

Roof & Floor
Trusses

715-538-2014

N37537 Hwy. 53/121 • Whitehall

CARE SANITATION LLC

Providing Septic
Services Since 1988

(715) 234-6325
Christopher Bergstrom

- County Maintenance Inspections
- Septic & Holding Tank Pumping
- Camera Inspection & Locating
- Emergency Services
- Sewer Line Thawing
- Porta-Potty Rentals
- Drain Cleaning



WASHBURN COUNTY

BEAVER LAKE BEACH

Beaver Lake Rd. | Bass Lake
This 87 acre lake has a public beach, boat landing, playground, picnic shelter and fishing pier.

BLUEGILL VILLAGE PARK

Highway 48 | Birchwood | (715) 354-3300
This park offers a small picnic area with tables.

COLLEGE STREET PARK

College Street | Spooner | (715) 635-9696
Located near the Spooner High School, College Street Park features a picnic area, skating rink, basketball court, hiking/cross country ski trail, disc golf, exercise stations, baseball fields, playground equipment and is dog friendly.

DOOLITTLE PARK

Hinman Dr. | Birchwood | (612) 804-3457
Located near Birch Lake, Doolittle Park features a boat launch, campground, picnic area, playground equipment and swimming beach.

DNR HATCHERY PICNIC GROUNDS

810 Maple St. | Spooner | (715) 635-4147
Located near the Yellow River Flowage, DNR Hatchery Picnic Grounds feature a campground, boat launch, fishing pier and picnic area.

EARL PARK LANDING

N Rd. | Trego | (715) 635-9696
The park offers campsites and a river to float, canoe, or kayak.

HUNT HILL AUDUBON SANCTUARY

N2384 Hunt Hill Rd. | Saronia | (715) 635-6543
Located on 600 acres, this sanctuary features hiking/snowshoe trails, nature playground and a nonprofit nature preserve with learning center.

MINONG PLAY PARK & BALL FIELDS

Richards Ave. | Minong
The park features a playground area, volleyball court, basketball court & a covered picnic pavillion.

SAWMILL LAKE PARK

Birchwood
Located near Sawmill Lake, Sawmill Lake Park features a campground, fishing pier and picnic shelter.

SHELL LAKE MEMORIAL PARK

Highway 63 | Shell Lake | (715) 468-7679
This park features a beach, swim rafts, pavilion (bandshell), shelter house, playground, picnic tables, sand volleyball court, benches, fishing pier, docks and an information kiosk.

SHELL LAKE MUNICIPAL CAMPGROUND

114 W Lake Dr. | Shell Lake | (715) 468-7846
Located near Shell Lake, Shell Lake Municipal Campground features a campground, boat launch, picnic area, playground equipment, basketball court and swimming beach.

TIP TOWN PARK

525 W Lake Rd. | Shell Lake | (715) 468-7679
The park offers a little league baseball field, picnic pavilion, sand volleyball courts, basketball courts, and tennis/pickle ball courts.

TOTOGATIC PARK

N13984 Tota Pk. Dr. | Minong | (715) 635-4490
Located near the Totogatic Flowage, Totogatic Park features a campground, boat launch, picnic area, fish cleaning station and swimming beach.

TREGO TOWN PARK & CAMPGROUND

W5665 Trego Park Rd. | Trego | (715) 635-6075
Located near the Namekagon River, Trego Town Park features a campground, picnic area and swimming beach.

TRIANGLE PARK

Cty. Hwy. K | Spooner | (715) 635-8769
The park offers picnic tables and a drinking fountain.

**For more information on Washburn County Parks, visit: <http://www.washburncounty.org>. Campground and picnic shelter reservations can be made on by calling (715) 635-4490, Monday through Friday 8:00AM - 4:30PM.*

BARRON COUNTY

BARRON COUNTY VETERANS PARK

2125 13 - 12 1/2 Ave. | Cameron | (715) 458-4125
Located on 160 acres near Prairie Lake, Veterans Memorial Park features a campground, boat launch, picnic shelter, playground equipment, hiking trails and is dog friendly.

CUMBERLAND LAKESIDE BEACH PARK

1151-1159 Lake St. | Cumberland | (715) 822-2752
The park features a beach, playground, picnic shelter, and bathrooms.

EARL CLANTON MEMORIAL PARK

1204 Hammond Ave. | Rice Lake
The park features 2 lighted slow pitch softball diamonds, flag/touch football field, playstructure, picnic shelter, concession stand, press box and restrooms.

HIAWATHA PARK

2101-2199 Monroe Ave. E | Rice Lake | (715) 234-7402
Located on over 33 acres, the park features hiking trails and a small water access area.

HOLSUM RIVERSIDE PARK

190 S. Main St. | Rice Lake
Located on 4 acres, the park features picnic tables and river bank fishing.

LOON LAKE WILDLIFE AREA

164 22nd Ave. | Comstock
Over 3000 acres located right between Turtle Lake and Cumberland. Perfect for viewing birds and other wildlife, hunting, and fishing. Also features hiking and snowmobile trails, as well as room for cross-country skiing.

MOON LAKE PARK

800 East South St. | Rice Lake
Located on 73.0 acres, the park features soccer fields, softball fields, skate park, hiking trail, two shelters, restrooms, concession stand, picnic tables and a boat dock.

NARROWS PARK & BEACH

815 E Sawyer St. | Rice Lake | (715) 234-9235
The park features a boat dock, picnic tables, benches, grills, picnic shelter, restrooms and playground equipment.

ROUX PARK

1211 West Marshall St. | Rice Lake
Located on 7.5 acres, the park includes a softball/baseball field, basketball court, horse shoe pits, shelter, picnic tables, grills, playground and restrooms.

SILVER LAKE BEACH

1148 25th 25 1/4 Ave. | Cumberland
The park offers a shelter, boat landing, swimming area, playground, volleyball and restrooms.

SOUTHWORTH MEMORIAL PARK

650 26 1/2 27th St. | New Auburn
Located on 17 acres near Ten Mile Lake, Southwest Memorial Park features a campground, boat launch, picnic shelter, playground equipment and is dog friendly.

TOURIST PARK

950 1st Ave. | Cumberland | (715) 822-2752

VETERANS MEMORIAL PARK

2125 13-12 1/2 Ave. | Cameron | (May 1 to Sept. 30): (715) 458-4125 | (Oc. 1 to April 30): (715) 537-6419
Located on 160 acres, the park features a boat ramp, campground, picnic shelter, playground equipment, hiking trails, pit toilets and a dumping station.

VILLAGE PARK

227 Maple St. N | Turtle Lake | 715-986-2241
The park features playground equipment, basketball court, ball field, winter ice skating rink, RV/tent camping and restrooms during summer months.

WALDO CARLSON PARK

2717 29th Ave. | Birchwood | (715) 354-3353
Located on 17 acres near Red Cedar Lake, Waldo Carlson Park features a boat launch, fishing pier, campground, picnic shelter, swimming beach and playground equipment.

WOLFINGER BIRD SANCTUARY

East Orchard Beach Lane | Rice Lake
Located on just under 8 acres, this non-developed natural resource area is currently a bird sanctuary park.

**For more information on Barron County Parks, visit: <http://www.barroncountywi.gov>. Campground and picnic shelter reservations can be made on by calling (715) 537-6295, Monday through Friday 8:00AM - 4:30PM.*

ARTS IN HAND GALLERY

210 Walnut St. | Spooner |
(715) 635-9303

BARRON AREA COMMUNITY CENTER

800 Memorial Dr. | Barron |
(715) 537-6666

BARRON COUNTY HISTORICAL SOCIETY & PIONEER VILLAGE MUSEUM

1866 13 1/2 Ave. | Cameron |
(715) 458-2080

BARRON COUNTY PUBLIC RANGE

530 29 1/2 Ave. | Barronett

BARRON MUNICIPAL SWIMMING POOL

27 West River Ave. | Barron |
(715) 637-3097

BARRON SPOTLIGHTERS

800 Memorial Dr. | Barron |
(612) 440-7510

BIRCHWOOD AREA LOG MUSEUM

101 N. Main St. | Birchwood |
(715) 520-0389

BLUE HILLS SPORTSMEN'S CLUB

1604 23-24 1/2 St. | Rice Lake |
(715) 933-0125

BRICKYARD POTTERY & GALLERY

W9008 Brickyard Rd. | Barronett |
(715) 468-7341

BRILL AREA SPORTSMEN'S CLUB

2501 26th Ave. | Rice Lake |
(715) 205-5440

CAMERON SPLASH PAD

1300 W Main St. | Cameron |
(715) 458-6460

CHETEK AREA MUSEUM

728 2nd St. | Chetek |
(715) 255-0482

CHETEK CITY BEACH

228 Lakeview Dr. | Chetek |
(715) 924-4838

CLEAR LAKE MUSEUM

450 5th Ave. Box 2 | Clear Lake |
(909) 452-2110

CLOVER MEADOW WINERY

23396 Thompson Rd. | Shell Lake |
(715) 468-4224

CUMBERLAND GOLF COURSE

2400 5th St. | Cumberland |
(715) 822-4333

DARRELL ADERMAN AUDITORIUM

802 First St. | Shell Lake |
(715) 468-2414

ENDGAME MINI GOLF

2900 S Main St. | Rice Lake |
(715) 418-6612

ENRICHMENT THROUGH CULTURE

1595 2nd Ave. | Cumberland |
(715) 822-2787

ERIKA QUAM MEMORIAL THEATRE

605 1st St. | Shell Lake |
(715) 468-2414

GOV. TOMMY G. THOMPSON STATE FISH HATCHERY

810 W Maple St. | Spooner |
(715) 635-4147

HUNT HILL NATURE CENTER & AUDUBON SANCTUARY

N2384 Hunt Hill Rd. | Sarona |
(715) 635-6543

HYDROFLITES

WATER SKI TEAM
728 Lakeview Dr. | Chetek

I PLAY QUARTER'S ARCADE

111 Elm St. | Spooner |
(715) 635-7529

JACK LINK'S AQUATIC & ACTIVITY CENTER

714 W Hokah St. | Minong |
(715) 972-8320

JAPANESE FRIENDSHIP GARDEN

5 Wisconsin Ave. | Rice Lake

LAKE 7 THEATRE

1769 County Hwy. SS | Rice Lake |
(715) 234-2691

LYNNDALE'S GOLF

2369 20 1/2 St. | Rice Lake |
(715) 234-5966

NAMEKAGON RIVER VISITOR CENTER

W5483 US-63 | Trego |
(715) 635-8346

NORTHERN WISCONSIN VETERANS MEMORIAL CEMETERY

N4063 Veterans Way | Spooner |
(715) 635-5360

NORTHSTAR BISON RANCH STORE

222 Birch Ave. | Cameron |
(715) 458-4300

NORTHERN STAR THEATRE

12 W. Marshall St. | Rice Lake |
(715) 736-4444

NORTHWOODS LANES & THE BASS HUNTERS' SALOON

412 River St. | Spooner |
(715) 939-1203

PINE CREST GOLF COURSE

404 16 1/2 St. | Dallas |
(715) 837-4653

RAILROAD MEMORIES MUSEUM

424 N Front St. | Spooner |
(715) 635-3325

RAND'S BOWLING LANES & LOUNGE

1601 S Main St. | Rice Lake |
(715) 234-9912

RED BARN THEATER

2247 22nd St. | Rice Lake |
(715) 234-8301

RICE LAKE ARCHERY PARK

3 Lindy St. | Rice Lake |
(715) 234-9235

RICE LAKE SPEEDWAY

2002 22 1/2 Ave. | Rice Lake |
(715) 236-2002

RICE LAKE SPLASH PAD

800 E South St. | Rice Lake |
(715) 234-7402

RICE LAKE SWIMMING POOL

200 Cameron Rd. | Rice Lake |
(715) 234-4279

ROLLING OAKS GOLF COURSE

440 W Division Ave. | Barron |
(715) 537-3409

SHELL LAKE ARTS CENTER

802 1st St. | Shell Lake |
(715) 468-2414

SIoux CREEK GOLF COURSE

568 23rd St. | Chetek |
(715) 924-3139

SKATE CITY

2057 17 1/4-17 1/2 Ave. | Rice Lake |
(715) 234-6070

SPARE TIME BOWL BAR & GRILL

440 Industrial Ave. | Turtle Lake |
(715) 986-4244

SPOONER AGRICULTURAL RESEARCH STATION & DISPLAY GARDEN

N5264 Orchard Ln. | Spooner |
(715) 635-3506

SPOONER CIVIC CENTER

301 Walnut St. | Spooner |
(715) 939-1106

SPOONER FISH HATCHERY

951 W Maple St. | Spooner |
(715) 635-4149

SPOONER RAILROAD PARK

475 Roundhouse Rd. | Spooner |
(715) 416-4622

SPOONER VETERANS MEMORIAL

Hwy. 63 | Spooner |
(715) 635-3526

STARDUST DRIVE IN MOVIE THEATER

995 22nd St. | Chetek |
(715) 458-4587

ST. CROIX CASINO

777 US-8 | Turtle Lake |
(800) 846-8946

STONE LAKE AREA HISTORICAL SOCIETY

6064 Stone Lake Rd. | Stone Lake |
(715) 865-4940

TACTICAL ESCAPE 101

2900 S Main St. Cedar Mall | Rice Lake |
(715) 418-0012

TAGALONG GOLF COURSE

2855 29th Ave. | Birchwood |
(715) 354-3458

THEATRE IN THE WOODS

605 1st St. | Shell Lake |
(715) 468-4387

THE POTTER'S SHED

260 Industrial Blvd. | Shell Lake |
(715) 468-4122

TURTLEBACK GOLF COURSE

1985 18 1/2 St. | Rice Lake |
(715) 234-6607

TURTLE LAKE MUSEUM

232 Willow St. | Turtle Lake | (715)
986-4680

TWIN VALLEY BISON & QUARTER HORSES

639 9th St. | Prairie Farm |
(715) 455-1545

VALKYRIE BREWING CO

234 Dallas St. W | Dallas |
(715) 837-1824

VETERANS MEMORIAL

US Highway 63 | Spooner

WASHBURN COUNTY HISTORICAL SOCIETY & MUSEUM

102 W 2nd Ave. | Shell Lake |
(715) 468-2982

WILDERNESS WALK ZOO & WESTERN TOWN

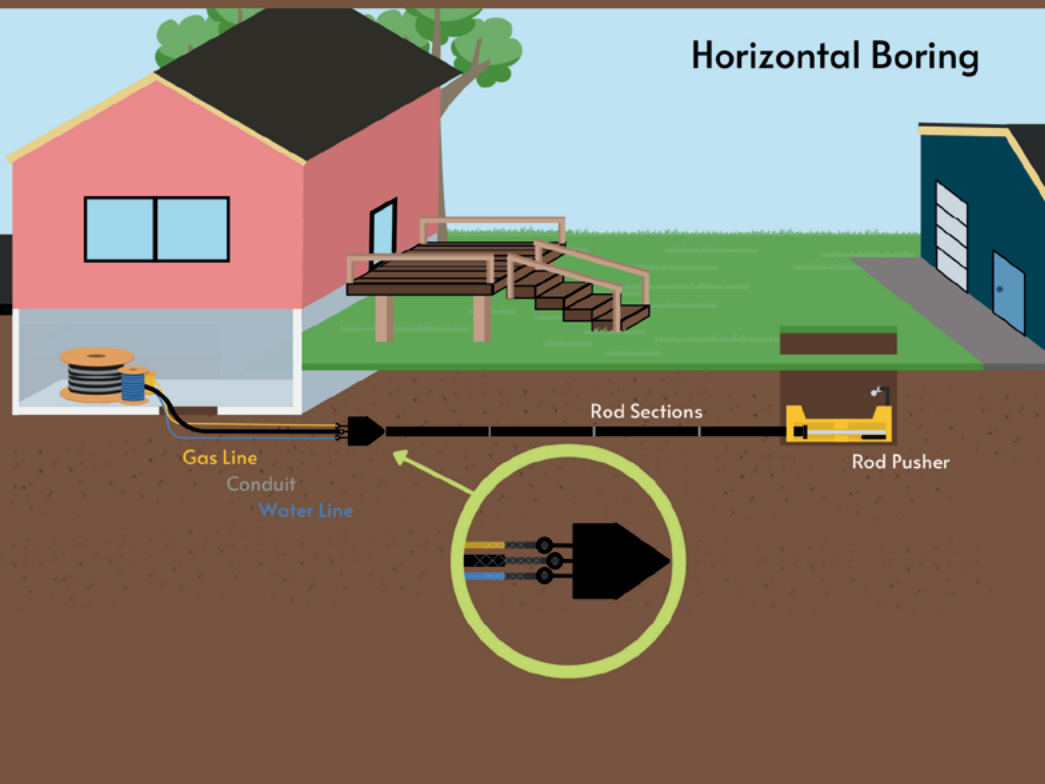
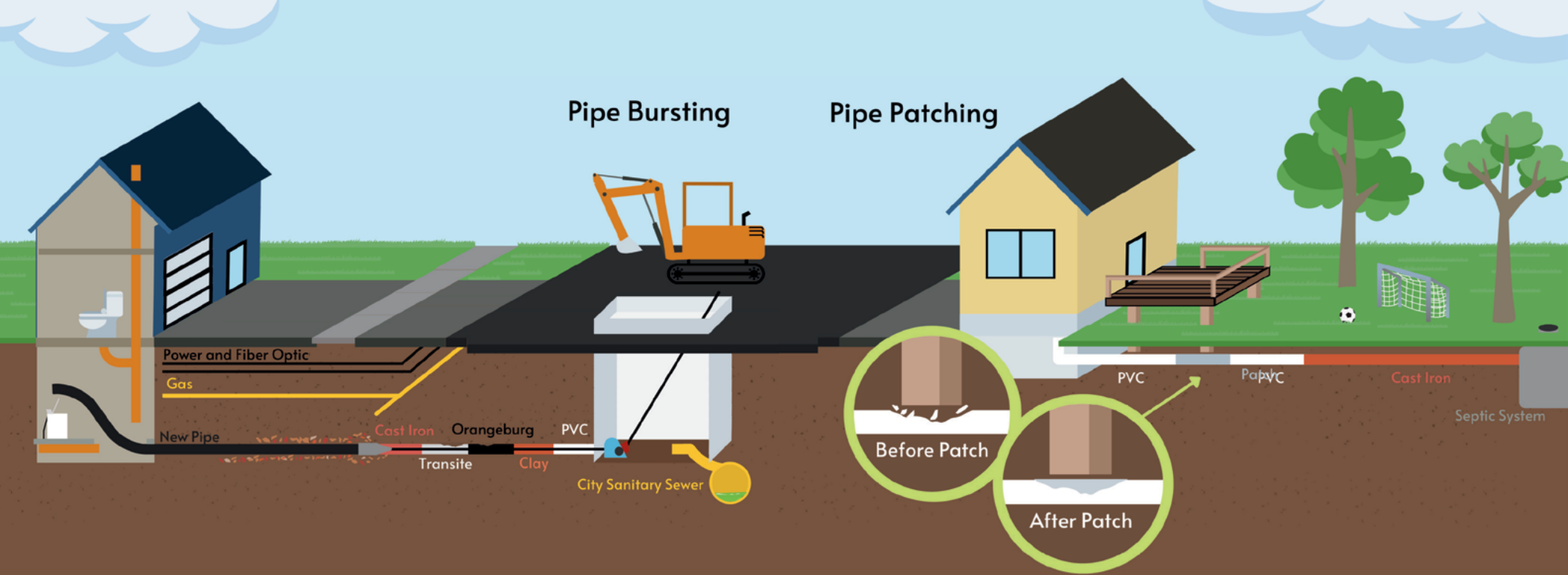
9503 Hwy. 27 | Hayward |
(715) 699-1442

WISCONSIN CANOE HERITAGE MUSEUM

312 N Front St. | Spooner |
(715) 635-5002

WISCONSIN GREAT NORTHERN RAILROAD

N6639 Dilly Lake Rd. | Trego |
(715) 635-3200



Gustum Trenchless Repair

We offer solutions to install, repair, or replace utilities buried under your house, garage, and landscaping without digging up your yard.

- ✓ One day solution
- ✓ Minimally disruptive
- ✓ Cost saving

Get your free estimate

Call or text Melvin at (715) 658 - 6070
AdvancedSewerRepair.com



Scan to visit website

You can purchase hunting and fishing licenses, cross-country ski passes and snowmobile trail stickers through the Electronic License System. Online: www.dnr.wi.gov, Toll Free: 1 (888) 936-7463 or visit one of the ELS agents available throughout Washburn & Barron Counties:

ALMENA

ALMENA CENEX

241 E Hwy. 8 | Almena | (715) 357-3957

BARRON

BARRON CENEX

1710 E Division Ave. | Barron | (715) 537-3658

WIEHES HARDWARE HANK

524 E LaSalle Ave. | Barron | (715) 537-5509

BARRONETT

BARRONETT CENEX

2962 Main St. | Barronett | (715) 822-8979

BIRCHWOOD

JASON MARKET

203 Main St. N | Birchwood | (715) 354-3535

CHETEK

KEG N KORK

120 2nd St. | Chetek | (715) 924-4894

ROD & GUN SHOP

513 2nd St. | Chetek | (715) 924-4181

CUMBERLAND

CUMBERLAND CENEX

2104 Carlone St. | Cumberland | (715) 671-0187

MINONG

SPORTSMAN HEADQUARTERS LLC

1010 W. Hokah St. | Minong | (715) 466-2171

RICE LAKE

APOSTLE 22 NORTH, INC

1124 Hammond Ave. | Rice Lake | (715) 413-1045

FARM & FLEET OF RICE LAKE

2011 Main St. S | Rice Lake | (715) 234-7092

JACOBSONS HARDWARE OF RICE LAKE LLC

28 S Main St. | Rice Lake | (715) 719-0072

KWIK TRIP #426

220 W Knapp St. | Rice Lake | (715) 736-0797

WALMART #1446

2501 West Ave. | Rice Lake | (715) 234-6990

SARONA

K&T ARCHERY AND SPORT SHOP

W6823 Cty. Hwy. D | Sarona | (715) 469-3310

SHELL LAKE

SHELL LAKE CENEX

331 Hwy. 63 | Shell Lake | (715) 468-2302

SPOONER

AAA SPORTSHOP

N5765 Bear Path Lane | Spooner | (715) 635-3011

DNR SPOONER SERVICE CENTER

810 W Maple St. | Spooner | (715) 635-2101

CIRCLE K

621 River St. N | Spooner | (715) 635-9421

SCHMITZ'S ECONOMART

700 River St. S | Spooner | (715) 635-2836



TREGO

BAY PARK RESORT & CAMPGROUND

N8347 Bay Park Rd. | Trego | (715) 635-2840

TREGO TRAVEL CENTER

W5741 County Hwy. E | Trego | (715) 635-4933

TURTLE LAKE

TURTLE LAKE CENEX

630 Hwy. 8 | Turtle Lake | (715) 986-4750

STONE LAKE

Pops Mart Fuels LLC.

6317 N. State Rd. 27 | Stone Lake | (715) 865-5110

STONE LAKE BAIT AND TACKLE

16869 W. Main Street | Stone Lake | (715) 865-2201

Don't Replace Your Roof, RESTORE IT!



ROOFTOP COATINGS
LLC

Roof Installation • Roof Replacement
Roof Maintenance • Roof Repair

STRUCTURALLY SOUND & VISUALLY APPEALING
TOP QUALITY SERVICE & CRAFTSMANSHIP

roofingcontractorcameronwi.com • 715-595-3266



HUNTING SEASONS

**Dates are subject to change please contact your local DNR office for specific hunting and trapping zone regulations. For general information on firearm safety training call: 1 (888) 936-7463.*

DEER

Archery and Crossbow

Sept. 14 – Jan. 5, 2025

Archery and Crossbow *Metro Sub-units only*

Sept. 14 – Jan. 31, 2025

Gun hunt for hunters with disabilities: This is not a statewide season. ~ Oct. 5 – 13

Youth deer hunt ~ Oct. 5 – 6

Gun ~ Nov. 23 – Dec. 1

Muzzleloader ~ Dec. 2 – 11

December 4-day antlerless hunt ~

Dec. 12 – 15

Antlerless-only Holiday Hunt ~

Dec. 24 – Jan. 1, 2025*

*Only in valid farmland units. Please see deer regulations booklet for valid units.



BEAR

Zones A, B, D: where dogs are permitted

Oct. 2 – 8

with aid of dogs only

Sept. 11 – Oct. 1

with aid of dogs

with aid of bait

with all other legal methods

Sept. 4 – 10

with aid of bait

with all other legal methods not using dogs

Zones C, E, F: where dogs are not permitted

Sept. 4 – Oct. 8

with aid of bait

with all other legal methods not using dogs

SMALL MAMMALS

Cottontail rabbit

Northern zone ~ Sept. 14 – Feb. 28, 2025

Southern zone ~ Oct. 19 (9 a.m.) – Feb. 28, 2025

Milwaukee County ~ Year-round

Squirrels (gray and fox)

Statewide ~ Sept. 14 – Feb. 28, 2025

GAME BIRDS

Crow

Statewide Nov. 23 – March 26, 2025

Pheasant

Statewide ~ Oct. 19 (9 a.m.) – Jan. 5, 2025

Bobwhite quail

Statewide ~ Oct. 19 (9 a.m.) – Dec. 11

Ruffed grouse

Zone A ~ Sept. 14 – Jan. 5, 2025

Zone Oct. 19 – Dec. 8

Sharp-tailed grouse ~ Season is under review.

Hungarian partridge

Statewide ~ Oct. 19 (9 a.m.) – Jan. 5, 2025

(Closed in Clark, Marathon and Taylor counties)

FURBEARERS

Coyote

Hunting ~ Year-round

Trapping ~ Oct. 19 – Feb. 15, 2025

Fox, red and gray

Hunting & Trapping ~ Oct. 19 – Feb. 15, 2025

Beaver

Trapping

Zone A (northwest) Nov. 2 – April 30, 2025

Zone B (northeast) Nov. 2 – April 30, 2025

Zone C (south) Nov. 2 – March 31, 2025

Zone D (Mississippi River) Dec. 2 – March 15, 2025

Muskrat & Mink

Trapping

Northern Zone Oct. 19 – April 15, 2025

Central Zone Oct. 26 – March 22, 2025

Southern Zone Nov. 2 – March 15, 2025

Mississippi River zone Nov. 11 – March 9, 2025

Bobcat

Trapping

North and South zones, Period 1 Oct. 19 – Dec. 25

North and South zones, Period 2 Dec. 26 – Jan. 31, 2025

Fisher

Trapping

North and South Zones Oct. 19 – Jan. 5, 2025

Otter

Trapping

North zone Nov. 2 – April 30, 2025

South zone Nov. 2 – March 31, 2025

Raccoon

Trapping

Resident Oct. 19 – Feb. 15, 2025

Nonresident Nov. 2 – Feb. 15, 2025

Opossum, skunk, weasel, snowshoe hare and woodchuck

~ No season limits, bag limits, size limits or possession limits, but a license is required.

WILD TURKEY

2024 Youth turkey hunt ~ April 13 – 14

Spring 2024

Period A April 17 – 23

Period B April 24 – 30

Period C May 1 – 7

Period D May 8 – 14

Period E May 15 – 21

Period F May 22 – 28

Fall 2024

Statewide Sept. 14 – Nov. 22

Zones 1 - 5 ~ Nov. 23 – Jan. 5, 2025



**For the latest season dates. Check the WI DNR website, <https://dnr.wisconsin.gov> or scan the QR code.*



FISHING SEASONS



2024-2025 FISHING SEASON DATES

(Effective Date: April 1, 2024; Dates Inclusive)

Early Inland Trout (catch & release)
January 6 (5 a.m.) - May 3

General Inland Trout
May 4 (5 a.m.) - October 15

General Inland Fishing
May 4 - March 2, 2025

Largemouth Bass Northern Zone Harvest
May 4 - March 2, 2025

Smallmouth Bass Northern Zone Harvest
June 15 - March 2, 2025

Large And Smallmouth Bass Southern Zone Harvest
May 4 - March 2, 2025

Large And Smallmouth Bass Catch And Release
At all other times of the year.

Musky Northern Zone Harvest
May 25 - December 31

Musky Southern Zone Harvest
May 4 - December 31

Northern Pike
May 4 - March 2, 2025

Walleye
May 4 - March 2, 2025

Lake Sturgeon
February 10 - February 25 (spearing)
September 7 to September 30 (hook-and-line)

Free Fishing Weekends
Jan. 20-21, 2024
June 1-2, 2024
Sept. 2 to Sept. 30 (hook-and-line)

**Contact the Wisconsin DNR for more information on specific fishing zones and dates:
1 (888) 936-7463
<https://dnr.wisconsin.gov>
or scan the QR code.*



YOUR Help is NEEDED!

Do **NOT** Transport Invasive:
• Fish
• Invertebrates
• Aquatic Plants



CLEAN. DRAIN. DISPOSE.

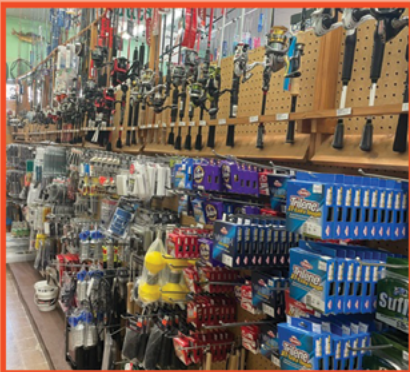
KNOW THE LAW! YOU MAY NOT...

- TRANSPORT WATERCRAFT WITHOUT REMOVING THE DRAIN PLUG.
- ARRIVE AT LAKE ACCESS WITH DRAIN PLUG IN PLACE.
- TRANSPORT AQUATIC PLANTS, ZEBRA MUSSELS, OR OTHER PROHIBITED SPECIES ON ANY ROADWAY.
- LAUNCH A WATERCRAFT WITH PROHIBITED SPECIES ATTACHED.
- TRANSPORT WATER FROM LAKES OR RIVERS.
- RELEASE BAIT INTO THE WATER.



Downtown Spooner
(715) 635-3883 

**NEW
 LOCATION
 COMING
 SPRING 2025**



NEW LOCATION
Coming Soon - Spring of '25



Hunting • Fishing • Camping
Clothing • Footwear • Souvenirs

TSU TRANSPORT SERVICES & **TERRY LECKEL TRUCKING INC.**
 ——— UNLIMITED ———

TSU of Shell Lake has immediate full time and part time openings for CDL and Non-CDL drivers (looking to get their CDL license). There are a variety of positions for driving - milk route driver, post office to post office (mail route) driver, nightly auto parts route driver, and freight drivers. **Now Hiring Diesel Mechanics.**

Qualified individuals must be dependable, responsible, flexible, and a team player. Vacation pay, holiday pay, and benefits offered. Must have a clean driving record and pass a pre-employment physical and drug screen. Retired and Semi-Retired applicants encouraged to apply.



Transport Services Unlimited, Inc.
 Lisa Glessing, Human Resources
 280 Industrial Blvd
 Shell Lake, WI 54871
 Call 715-468-7222 or stop in
 Monday-Friday 8:00am to 3:00pm

Locally Owned & Operated



- Water testing & treatment
- Water system installations, repairs & consultation
- Water pressure solutions
 - Water conditioning
 - Plumbing repairs
 - Water heaters & water softeners
 - Water lines
 - Water pumps
 - Pressure tanks
- Well inspections
- Sump pump work
- Well abandonment
- Emergency water service
- Livestock watering solutions
- Ensuring property is up to code

(715) 416-0555 • bcmqualitywatersystems.com
bcmqualitywater@gmail.com

983 7 1/2 AVENUE • BARRON • WI • 54812

FREE RV PARKING WITH SYRUP PURCHASE!



Great People & Great Products

RV parking through HARVEST Host reservation

At MAPLE CREEK SUGARBUSH our focus is to produce delicious, high quality maple products in a family fun atmosphere.



maplecreeksugarbush.com • 715-455-1025



Same Day Care!

FOR RESIDENTS & VISITORS

Primary Care Clinic • Acute Health Care
Medical Weight Loss • IV Infusion Therapy

Self Directed Labs
BE IN CONTROL OF YOUR HEALTH
(Cash, Check, or Card)

1x Visit or Membership Options Available

Sensible Solutions Care Clinic

MORE INFO ONLINE



Jamie Edwards
FAMILY NURSE PRACTITIONER
MSN, APNP, FOUNDER, OWNER, CEO



337 East La Salle Avenue • Barron • WI • 54812
www.sscareclinic.com • 715-637-0001



Timeless Builders Inc.



Wick Buildings®

Authorized Wick Builder

Garages, Sheds & Barndominiums

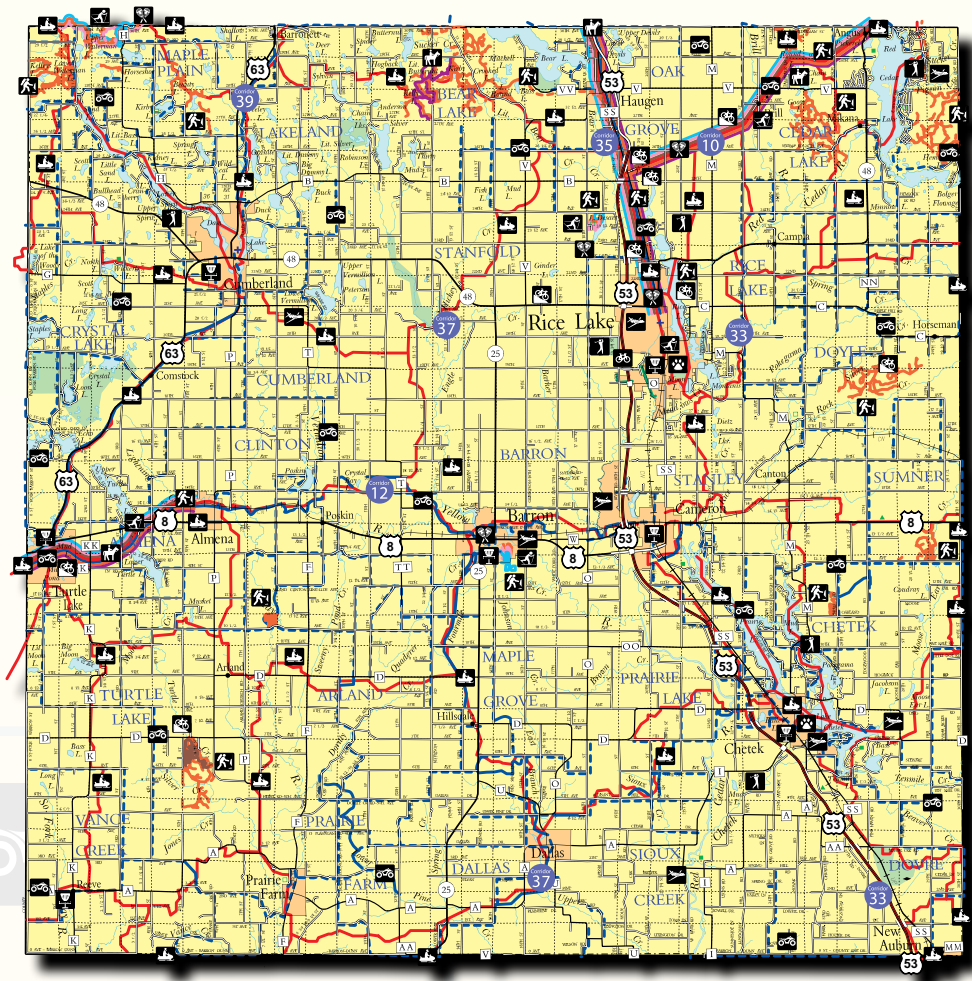
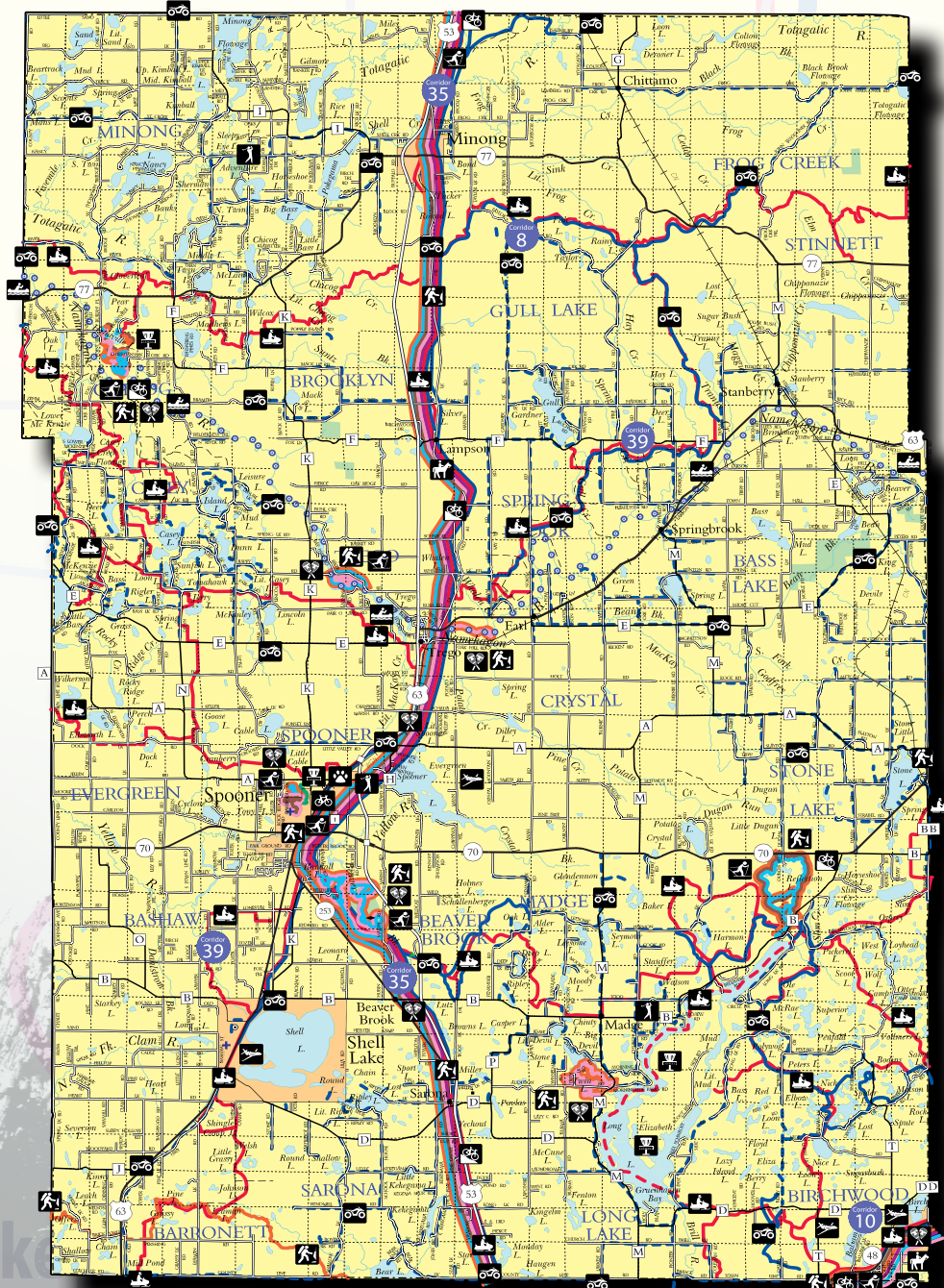
(715) 342-4066

thetimelessbuilders.com

Nekoosa, WI

WASHBURN COUNTY TRAILS

BARRON COUNTY TRAILS



- | | | | |
|---|--------------------------------|---|----------------------------|
|  | ORV Trail/Route |  | Mountain Bike Trail |
|  | Snowmobile Trail |  | Bicycle Trail/Route |
|  | Hiking/Walking Trail |  | Airport |
|  | Cross-Country Ski Trail |  | Disc Golf Course |
|  | Equestrian Trail |  | Dog Park Locator |

So, You have decided to get a pet...

NOW WHAT??

Commitment and Time: Owning a pet is a long-term commitment. Before bringing a pet home, consider your lifestyle and ensure you have enough time to spend with your pet. Dogs, cats, and many other animals require attention, exercise, and mental stimulation.

Choose the Right Pet for Your Lifestyle: Different pets have varying needs, temperaments, and activity levels. Research and select a pet that fits well with your lifestyle, living situation, and family dynamics. Whether you choose a dog, cat, bird, fish, or any other animal, make sure you can provide for its specific needs.

Proper Nutrition: Feed your pet a balanced and nutritious diet suitable for their species and age. Consult with a veterinarian to determine the best food options for your pet's health and well-being.

Regular Exercise: Most pets need regular physical activity to stay healthy and happy. Engage in playtime and exercise with your pet daily, as it helps prevent obesity and provides mental stimulation.

Routine Veterinary Care: Schedule regular check-ups with a veterinarian to monitor your pet's health, get necessary vaccinations, and address any concerns. Early detection of health issues can often lead to better outcomes.

Spaying/Neutering: Consider spaying or neutering your pet if you don't plan on breeding. This helps control the pet population and can have health benefits for your pet.

Training and Socialization: Properly train your pet to follow basic commands and have good manners. Socialize them with other animals and people from a young age to prevent behavioral issues later on.

Provide a Safe Environment: Ensure that your home and yard are safe for your pet. Remove hazards, keep toxic substances out of reach, and provide appropriate shelter from extreme weather conditions.

Grooming: Regular grooming is essential for most pets. Brush their fur, trim nails, and clean their ears as needed to keep them comfortable and healthy.

Identification and Microchipping: Keep identification tags with your current contact information on your pet's collar. Consider microchipping your pet as an extra measure to ensure they can be identified if lost.

Love and Attention: Pets thrive on love and attention from their owners. Spend quality time with your pet, provide affection, and build a strong bond.



Respect and Understanding: Learn to understand your pet's body language and behavior. Respect their boundaries and feelings, and avoid forcing them into uncomfortable situations.

Patience and Forgiveness: Pets, especially young ones, can be mischievous or have accidents. Be patient with them during the training process and forgive any mistakes they make along the way.

Emergency Preparedness: Have a plan in place for emergencies, including natural disasters. Know how to evacuate with your pet safely if needed.

If you have just rescued / adopted a new fur baby, please it is important to remember the 3-3-3 RULE:

3 Days:

In the first 3 days being in its new home, they will be feeling overwhelmed, scared & unsure of what is going on. They may also be uncomfortable being "themselves", and may not want to eat or drink. They may want to "shut down" or hide under a bed or in a crate, and they will test boundaries.

3 Weeks:

At this point, they may be a lot more comfortable & settling in. Learning a new routine can be overwhelming, so please be patient. By now they may have figured out the new environment & accepted that this may be their FURever home. Their personality traits will start to show, as well as any behavior issue that may be present.

3 Months:

For most fur babies, 3 months is enough time to finally be comfortable and begin to build trust and a true bond. A sense of security may be present & a set routine will help this process.

Please know that this is not the rule with every rescued or adopted pet, as some may need 6 months to a year to adjust & adapt, depending on MANY factors. Age of animal, what type of an environment did they come from?

Auggie Land Dog Park

871 24 1/2 St. | Chetek

Bark Park

15355 Park Ln. | Park Falls

City of Chetek Dog Park

401 City Park Dr. | Chetek |

(715) 924-4838

Rice Lake Dog Park

2601 S Main St. | Rice Lake

| (715) 234-9235

Spooner Dog Park

1300 Roundhouse Rd. |

Spooner

Tuscolbia State Trail

(Dogs allowed)

N15400 Park Ln. | Park Falls

DOG PARKS





WATCH US ON
AMERICA'S BEST
RESTAURANTS!

NEW SUMMER HOURS • Join Us For Sunday Dinner 2 - 7 p.m.

TRACKS BAR & GRILL

Spooner, WI



RESTAURANT GURU 2024
BEST RESTAURANT
IN SPOONER

Sunday Brunch

10 a.m. - 2 p.m.
\$15⁹⁹ per adult \$6⁹⁹ under 12 yrs.

NEW BRUNCH CHOICES ADDED!

Jerk Chicken & BBQ Ribs

Scrambled eggs, Western
scrambled eggs, French
toast, bacon, sausage links,
homemade biscuits and
sausage gravy, baby red
home fries, cream of wheat,
roast beef, white fish piccata,
chicken francise,
peel-and-eat shrimp, potato salad, macaroni
salad, fresh fruit, cottage cheese, fresh tossed
salad, fresh Danishes & homemade desserts.



Mimosas
and
Bloody Marys

ALL DINNERS INCLUDE SOUP & SALAD BAR
(EXCEPT PIZZA & WINGS)

MONDAY

Meatloaf Monday, mashed potatoes &
veggie.....\$19.50
12" 2-Topping Pizza.....\$11.50
NEW! Boneless Wings, 8 flavors of
sauces..... 1/2 Lb. \$6.99, 1 Lb. \$12.99

TUESDAY

Rib Night, baby back & BBQ beans,
mac & cheese and corn bread.....\$24.50

WEDNESDAY

NEW! Homemade Lasagna & garlic bread. \$17.99
Pork chops (grilled, fried or stuffed) or
Pork Rib Eye.....\$18.99

THURSDAY

Pot Pie Night, beef or chicken.....\$16.50
Walleye.....\$27.50

FRIDAY

All-You-Can-Eat Fish Fry.....\$17.99

SATURDAY

1-Lb. Prime Rib or 1-Lb. Rib Eye.....\$31.99

SUNDAY 2-7 P.M.

Chicken & Ribs.....\$15.99

Voted Best
Fish Fry in Washburn
County!

2 Mi. West Of Spooner On Hwy. 70 • 715-635-3399

Kitchen Hours: Mon. - Sat. 11 a.m. - 9 p.m.; Sun. 10 a.m. - 7 p.m.

CHECK OUT OUR NIGHTLY DINNER SPECIALS!
FULL SOUP & SALAD BAR 7 DAYS A WEEK!

Shop. Dine. Play. Stay.

LOCALLY

and help support businesses
throughout your area.

Advertising Made Simple call: 651-788-9323

LincolnMarketing
www.lincolnmarketing.us

Tilapia Baked in Garlic Butter



Simple meal with a Gourmet Feel

INSTRUCTIONS

- 1 Preheat your oven to 375°F (190°C).
- 2 Pat the tilapia fillets dry with paper towels and place them in a baking dish.
- 3 In a small bowl, mix together the minced garlic and melted butter.
- 4 Pour the garlic butter mixture over the tilapia fillets, making sure they are well coated.
- 5 Season the fillets with salt and pepper to taste.
- 6 Bake the tilapia in the preheated oven for 12-15 minutes or until the fish is cooked through and flakes easily with a fork.
- 7 Sprinkle chopped parsley over the top of the cooked tilapia, if desired.
- 8 Serve the tilapia fillets hot, with your favorite side dishes.

INGREDIENTS

- 4 tilapia fillets
- 4 cloves garlic, minced
- 4 tablespoons butter, melted
- Salt and pepper, to taste
- Fresh parsley, chopped
(optional)

Enjoy your delicious
and healthy tilapia
baked in garlic butter!

PREP: 35 MIN • TOTAL: 50 MIN

Fall Lawn Care



In the fall grass grows fast. This is because the sun's rays are less intense during the day and the cooler temperatures at night. This makes it a great time to get your lawn good and healthy for next summer.

Here are a few things you can do to prep your lawn for next year.

- Remove the leaves from your lawn to prevent matting and fungi growth. Or mulch them up into fine pieces, which also acts as a natural fertilizer.
- Don't stop mowing. If the grass is too long come winter time it will lay over on itself and be more vulnerable to fungi.
- Aerate the soil every other year to loosen it up so water, oxygen and nutrients can get to the roots easier.
- Reseed bald or thin areas of grass around the yard.
- Fertilizing in the fall is the best time. It gives the grass important nutrients to help it stay strong and healthy through the winter.



715-682-7121
www.badriver.com
73370 US HWY 2
Odanah WI 54861

Casino Hours 8am-2am
Gift Shop 8am-11:45pm
Manomin Restaurant 8am-8pm



Gift Shop 8am-11:45pm



Manomin Restaurant 8am-8am



Slots



Lodge



Falls Lounge

Convention Center

Lodge
1-800-795-7121 or
715-682-6102
www.badriver.com
73370 US HWY 2
Odanah WI 54861

Smoke Free and Mask Optional

Where the fun begins and the winning never ends.

