

4 FIRES ENTERPRISES LLC

Spray Foam Insulation and Construction for Agricultural, Commercial and Residential

WW Weld, Weld Cattle Equipment and Fire Tanks, General Contractor, and Spray Foam Insulation
Donny Nelson: 701-675-2417 or 701-580-2182
Randy Spurgeon: 701-390-4640



PACIFIC STEEL & RECYCLING

Buy & Sell

- Aluminum • Scrap Metal
- Insulated Copper Wire
- Cans - Brass • Radiators
- Junk Vehicles

We sell structural steel

433-1301
35023 County Road 123
Sidney, MT
www.Pacific-Steel.com

Cherry Creek Radio

KEYZ AM 660 NEWS RADIO

News • Weather • Entertainment • Talk

POWER 95.1 FM

THUNDER 96.1

HELP SUPPORT YOUR LOCAL BUSINESS

For Advertising In Your Local Area Call: **651-646-4674**

LincolnMarketing

Tribal Express

Hwy 2 East Poplar, MT 59255 / (406) 768-3480


Don't forget to gas up! **Fast Friendly Service!** Check out our Daily Specials

Hungry? Check out our Deli! **Stop in and try your luck in our casino!!**

MAXIMUM EXPOSURE at MINIMUM COST.

Map & Guide Ads Work. Email: info@lincolnmktg.com for advertising in your local area.

LincolnMarketing We'll Get You Where You Want To Go.



Big Boy's TOYS

• Guns • Ammo • Knives

Check Our Daily Specials

300 North Main
701-842-3301 • Watford City, ND
www.calltheshotsinc.com

Sidney Rental

406-433-8338
Dealer of Wacker Construction Equipment
Retail Sales Construction Tools & Equipment

For all your rental needs

- Forklifts & Skidsteers
- Manlifts & Scissorlifts
- Scaffolding & Ladders
- General Construction Equipment
- Concrete Tools & Light Plants
- Cranes
- Compaction Equipment
- Back Hoes
- Mini Excavators
- Lawn & Garden
- Large Excavators
- Loaders
- Trailers
- Plumbing & Pumps

2508 Lincoln Ave. S., Sidney, MT

Kringen Construction Inc.

406-433-4124
General Contractor
Construction Management

- Commercial or Residential
- All types of Construction
- Authorized Chief, Star, Nucor and Behlen Steel Buildings
- Spray Foam Insulation

1645 S. Central Ave., Sidney, MT
Fax: 406-433-4127
Williston Office: 701-572-4124
Licensed, Bonded & Insured
Montana & North Dakota

Bison Builders

Oil & Gas Services

Ross, ND ~ 629-9676 ~ Wyatt Seibel



Best Buns In Town!

Serving Breakfast All Day! Plus Full Menu

Open 7 Days a Week • 6 A.M.-10 P.M.

Little Missouri Grille

701-444-6315 • Hwy. 85 W • Watford City, ND



WE'VE GOT IT ALL

WE'RE MUCH MORE THAN A DRUGSTORE!

- Free Blood Pressure Checks
- Cowboy Up & Wildlife T-shirts
- Western, Country & Contemporary
- Home Decor • Magazines • Best Seller Books
- Russell Stover Candy • Prescription Service
- New Fabric Arrivals • Souvenirs for all ages
- Woodwick Candles • Melissa & Doug Toys

BARRETT PHARMACY & VARIETY

HealthMart PHARMACY

145 MAIN • WATFORD CITY, ND • 701-842-3311
9 a.m.-6 p.m. Mon - Fri • 9 a.m.-5 p.m. Sat

www.facebook.com/pages/Barrett-Pharmacy-and-Variety/11108545607880

SchMart SOLUTIONS, LLC

THE COMPANY WITH A VISION

Very Affordable
Customize Your Modular Home, Single or Double Wide

Financing Available

1315 22nd Ave. NW
Sidney, MT 59270
Debora Schieffer
406-488-6183 • 406-489-6183 • schmartsolutions@gmail.com

LincolnMarketing

Would like to Thank You for **30 Years** of Loyal Business

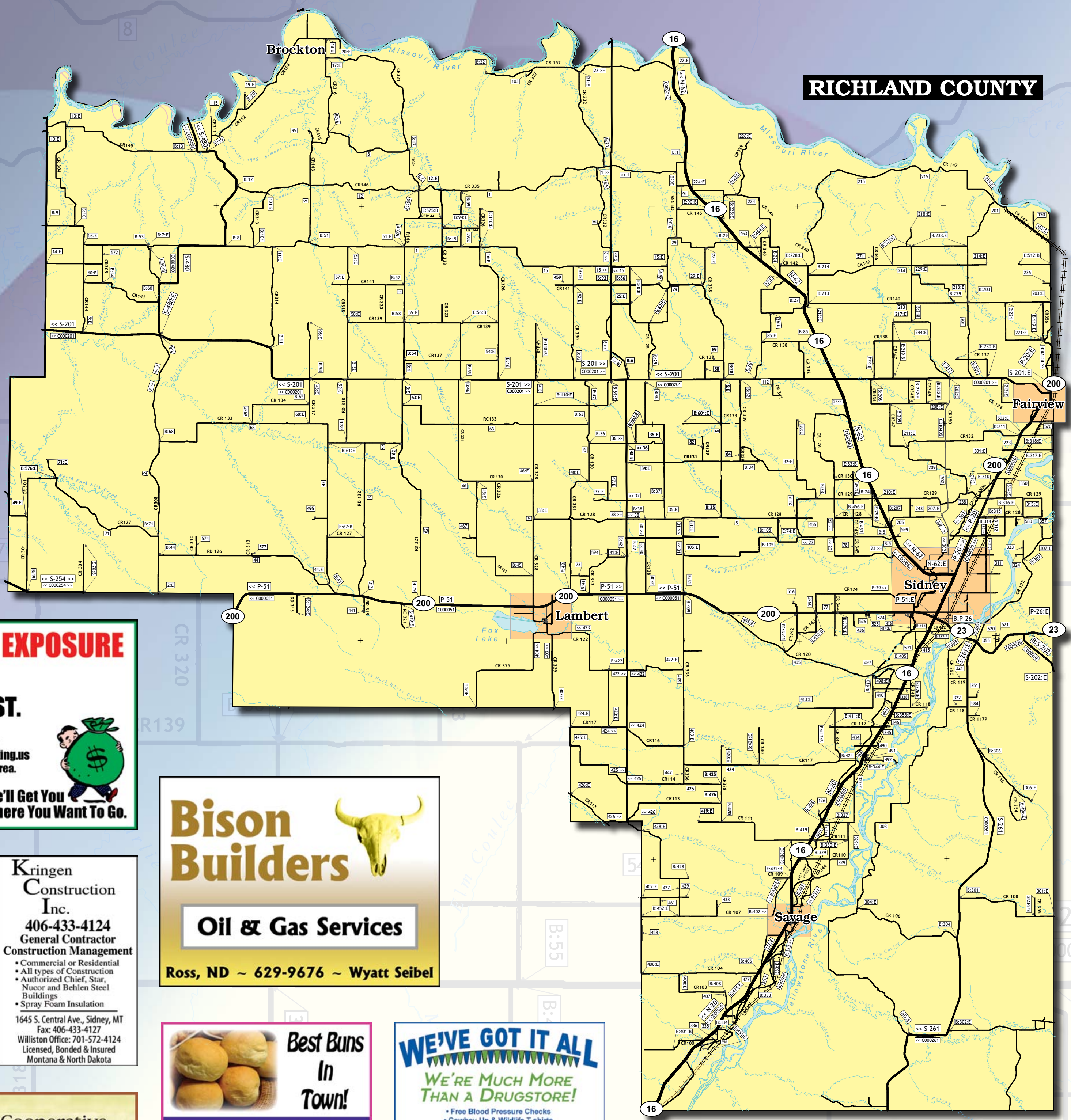
Best Buns In Town!

Serving Breakfast All Day! Plus Full Menu

Open 7 Days a Week
6 A.M.-10 P.M.

Little Missouri Grille

701-444-6315 • Hwy. 85 W • Watford City, ND

Richland County, MT & McKenzie County, ND

Recreational Trails Included

LincolnMarketing

FREE Local Area Map

www.LincolnMarketing.us

WE'VE GOT IT ALL

WE'RE MUCH MORE THAN A DRUGSTORE!

- Free Blood Pressure Checks
- Cowboy Up & Wildlife T-shirts
- Western, Country & Contemporary
- Home Decor • Magazines • Best Seller Books
- Russell Stover Candy • Prescription Service
- New Fabric Arrivals • Souvenirs for all ages
- Woodwick Candles • Melissa & Doug Toys

BARRETT PHARMACY & VARIETY

HealthMart PHARMACY

145 MAIN • WATFORD CITY, ND • 701-842-3311
9 a.m.-6 p.m. Mon - Fri • 9 a.m.-5 p.m. Sat

www.facebook.com/pages/Barrett-Pharmacy-and-Variety/11108545607880

Scan QR Code to go to the individual County Page

Richland County

This free publication is made possible by the advertisers and other local agencies and may not be reproduced. Please support the local advertisers on this publication. Comments and/or suggestions may be directed to: info@lincolnmktg.com

This map is prepared with information provided to us by others, therefore, Lincoln Marketing and the advertisers assume no liability in regards to trails (including accuracy). Please respect private property and no trespassing signs. Stay on trails. Exercise extreme caution on all lakes and streams. Obey all state and local laws and ordinances. Do not operate snowmobiles on county roads or state highways.

View this publication online at www.LincolnMarketing.us

4 FIRES ENTERPRISES LLC

Spray Foam Insulation and Construction for Agricultural, Commercial and Residential

WW Weld Weld Cattle Equipment and Fire Tanks, General Contractor, and Spray Foam Insulation
Donny Nelson: 701-675-2417 or 701-580-2182
Randy Spurgeon: 701-390-4640



Cherry Creek Radio

KEYZ AM 660 NEWS RADIO

News • Weather • Entertainment • Talk

POWER 95.1 FM

THUNDER 96.1

Tribal Express

Hwy 2 East Poplar, MT 59255 / (406) 768-3480

Don't forget to gas up!

Fast Friendly Service!

Check out our Daily Specials

Hungry? Check out our Deli!

Stop in and try your luck in our casino!!

Big Boy's Toys

• Guns • Ammo • Knives

Check Our Daily Specials

300 North Main
701-842-3301 • Watford City, ND
www.calltheshotsinc.com

Scan QR Code to go to the individual County Page

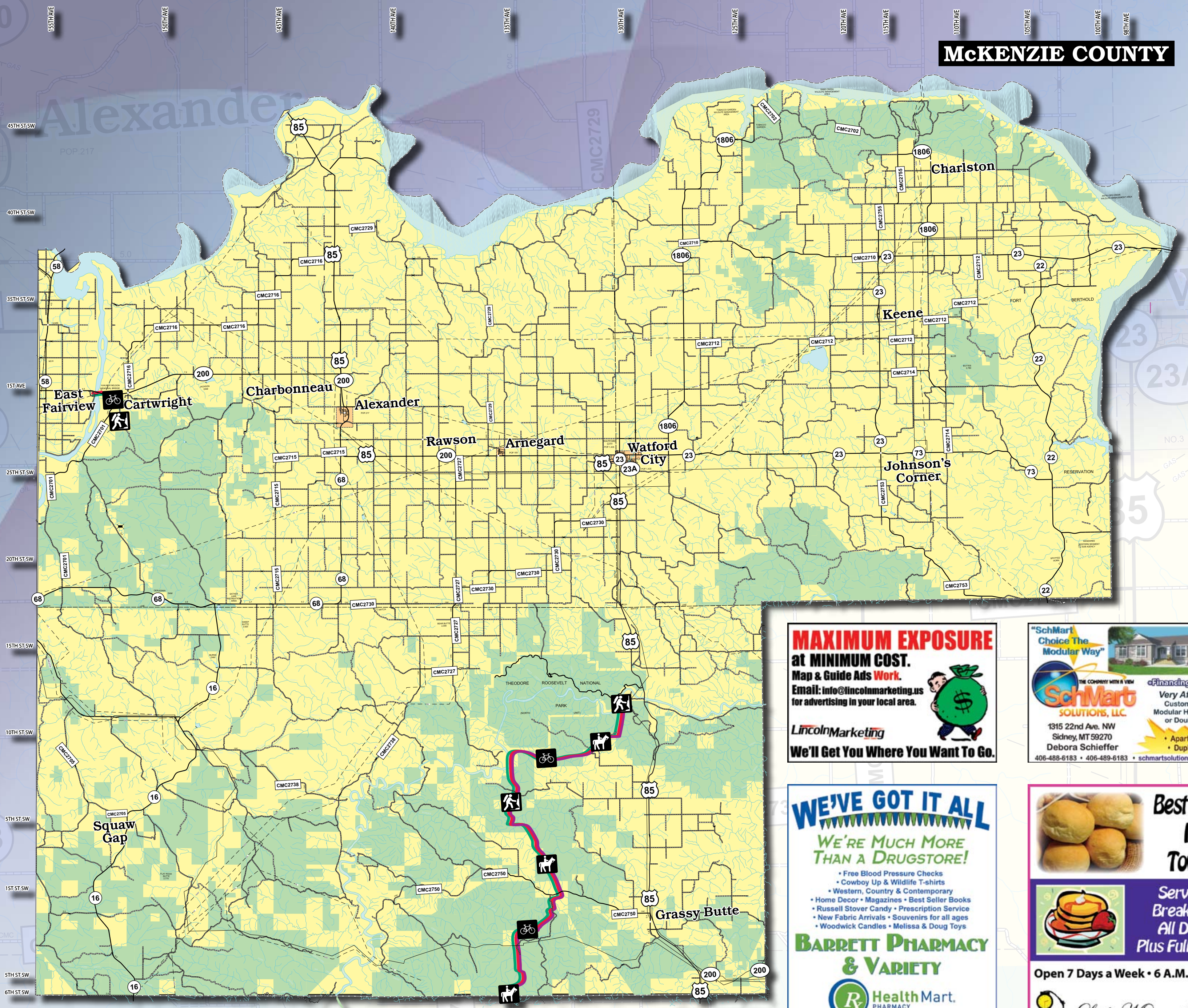
McKenzie County

 Bicycle Trail/Route
 Hiking/Walking Trail
 Equestrian Trail

This free publication is made possible by the advertisers and other local agencies and may not be reproduced. Please support the local advertisers on this publication. Comments and/or suggestions may be directed to: info@lincolnmktg.com

This map is prepared with information provided to us by others, therefore, Lincoln Marketing and the advertisers assume no liability in regards to trails (including accuracy). Please respect private property and no trespassing signs. Stay on trails. Exercise extreme caution on all lakes and streams. Obey all state and local laws and ordinances. Do not operate snowmobiles on county roads or state highways.

View this publication online at www.lincolnmktg.com



McKENZIE COUNTY

Richland County, MT & McKenzie County, ND

Recreational Trails Included

LincolnMarketing

FREE Local Area Map

www.LincolnMarketing.com

WE'VE GOT IT ALL

WE'RE MUCH MORE THAN A DRUGSTORE!

- Free Blood Pressure Checks
- Cowboy Up & Wildlife T-shirts
- Western, Country & Contemporary
- Home Decor • Magazines • Best Seller Books
- Russell Stover Candy • Prescription Service
- New Fabric Arrivals • Souvenirs for all ages
- Woodwick Candles • Melissa & Doug Toys

BARRETT PHARMACY & VARIETY

Health Mart. PHARMACY

145 MAIN • WATFORD CITY, ND • 701-842-3311

9 a.m.-6 p.m. Mon - Fri • 9 a.m.-5 p.m. Sat

www.facebook.com/pages/Barrett-Pharmacy-and-Variety/111085545607880

MAXIMUM EXPOSURE at MINIMUM COST.

Map & Guide Ads Work.

Email: info@lincolnmktg.com for advertising in your local area.

LincolnMarketing

We'll Get You Where You Want To Go.

SchMart

Choice The Modular Way

Very Affordable
Customize Your Modular Home, Single or Double Wide

Financing Available

1315 22nd Ave. NW
Sidney, MT 59270
Debora Schieffer
406-488-6183 • 406-489-6183 • schmartsolutions@gmail.com

Best Buns In Town!



WE'VE GOT IT ALL

WE'RE MUCH MORE THAN A DRUGSTORE!

- Free Blood Pressure Checks
- Cowboy Up & Wildlife T-shirts
- Western, Country & Contemporary
- Home Decor • Magazines • Best Seller Books
- Russell Stover Candy • Prescription Service
- New Fabric Arrivals • Souvenirs for all ages
- Woodwick Candles • Melissa & Doug Toys

BARRETT PHARMACY & VARIETY

Health Mart. PHARMACY

145 MAIN • WATFORD CITY, ND • 701-842-3311

9 a.m.-6 p.m. Mon - Fri • 9 a.m.-5 p.m. Sat

www.facebook.com/pages/Barrett-Pharmacy-and-Variety/111085545607880

Best Buns In Town!

Serving Breakfast All Day! Plus Full Menu

Open 7 Days a Week • 6 A.M.-10 P.M.

Little Missouri Grille

701-444-6315 • Hwy. 85 W • Watford City, ND

Best Buns In Town!

Serving Breakfast All Day! Plus Full Menu

Open 7 Days a Week 6 A.M.-10 P.M.

Little Missouri Grille

701-444-6315 • Hwy. 85 W • Watford City, ND

LincolnMarketing

Would like to Thank You FOR

30 Years

of Loyal Business

Bison Builders

Oil & Gas Services

Ross, ND ~ 629-9676 ~ Wyatt Seibel

PACIFIC STEEL & RECYCLING

Buy & Sell

- Aluminum • Scrap Metal
- Insulated Copper Wire
- Cans - Brass • Radiators
- Junk Vehicles

We sell structural steel

433-1301

35023 County Road 123, Sidney, MT

www.Pacific-Steel.com

Western Cooperative CREDIT UNION

WWW.WCCU.ORG

1300 Bison Dr. Williston, ND 58801 701.572.4000	215 Washington Ave. Williston, ND 58801 701.572.4000	10 Main St. Ray, ND 58849 701.568.3663
---	--	--

Sidney Rental

406-433-8338

Construction Equipment
Retail Sales Construction Tools & Equipment

For all your rental needs

- Forklifts & Skidsteers
- Manlifts & Scissorlifts
- Scaffolding & Ladders
- General Construction Equipment
- Concrete Tools
- Light Plants
- Cranes
- Compaction Equipment
- Back Hoes
- Mini Excavators
- Lawn & Garden
- Large Excavators
- Loaders
- Trailers
- Plumbing & Pumps

2508 Lincoln Ave. S., Sidney, MT

Kringen Construction Inc.

406-433-4124

General Contractor
Construction Management

- Commercial or Residential
- All types of Construction
- Authorized Chief, Star, Nucor and Behlen Steel Buildings
- Spray Foam Insulation

1645 S. Central Ave., Sidney, MT
Fax: 406-433-4127
Williston Office: 701-572-4124
Licensed, Bonded & Insured
Montana & North Dakota