

Free LOCAL AREA Guide

WITH RECREATIONAL TRAILS

Northern Minnesota with Roseau, Lake of The Woods & Koochiching Counties



LincolnMarketing
www.lincolnmktg.com

Sales and Service

Factory Trained Service Technicians For:

◆ **Stern Drives** ◆ **Inboards** ◆ **Outboards** ◆ **Diesels**

~ Skeeter ~ Alumacraft ~ SportCraft ~ Mercury ~
~ Evinrude ~ Yamaha ~ Suzuki ~ Yanmar ~ SnoBear ~

*"You can trust these guys
with your boat"*



3208 Bur Oak Road • Baudette, MN 56623

Phone # 218-634-2289

Mon-Fri 8am-5pm • Summer Sat. 8am-12pm

f Check out our Facebook page

STOP IN FOR A DELICIOUS HAMBURGER

Adrian's RESORT

On the Rainy River • Lake of the Woods • (218) 634-1985

- Cable T.V. in the cabins • Ice Fishing
- Plowed Road to Fish Houses
- Snowmobiling
- Launch Service • Boats • Minnows
- Modern Housekeeping Cabins
- Modern Camp Grounds
- Groceries • Bar • On & Off Sale Liquor



12 MILES N.W. ON HWY. 172 • 3362 RED OAK RD. NW
BAUDETTE, MN 56623



When's the last time you fished the Northwest Angle? Come to.....



the area's premier destination resort!



SPORT & FAMILY FISHING ON LAKE OF THE WOODS

3041 Oak Island | Oak Island MN 56741 | oakislandresort.com

Security

STATE INSURANCE
AGENCY, INC.

P.O. Box 70 • 505 Lake St. NE • Warroad, Minnesota 56763
Tel. (218) 386-1818

For all your insurance needs:
**Home, Auto,
Business and More!**



MULTUMESC
MERC
MATONDO
SPASIBO
VINAKA
MATERNUWUN
GRASIE
OBRIGADO
DANKE
MERC
KITOS
TERMAKASIH
DANKE
WELALIN
CHOKRANE
MULTUMESC
MATERNUWUN
DANKE
WELALIN

THANK YOU

MULTUMESC
MATERNUWUN
GRACIAS
DANKE
MATONDO
VINAKA
SALAMAT
VINAKA
DANKE
SPASIBO
GRACIAS
CAMONBAN
KIITOS
UATSAGRAUKUJ
ARIGATO
MAAKE
SPASIBO
MATONDO

FOR 40 YEARS

of Loyal
Business

LincolnMarketing

Since 1934

HELGESON

FUNERAL HOMES & CREMATION SERVICES

Roseau ♦ Warroad ♦ Baudette
218-463-1211 ♦ helgesonfuneralhome.com

ADDITIONAL SERVICES INCLUDE

OBITUARIES
PRE-PLANNING
VETERANS HEADSTONES
LODGINGS
GRIEF SUPPORT
MONUMENTS
SOCIAL SECURITY BENEFITS

TABLE OF CONTENTS

2-3	Local Events
4-5	Resident Services
6	Roseau County History
7	Roseau County Communities
8	Lake of the Woods County History
9	Lake of the Woods County Communities
10	Koochiching County History
11-12	Koochiching County Communities
13	Parks & Recreation
16	Local Attractions
18-19	Minnesota Hunting Seasons
20-21	DNR License Centers
22	Minnesota Fishing Seasons
30-31	Area Trails

Koochiching County



Roseau County Lake of the Woods County



Scan the QR Code to
go to the individual
county page.

This free publication is made possible by the advertisers and other local agencies
and may not be reproduced. Please support the local advertisers on this publication.
Comments and/or suggestions may be directed to: info@lincolnmarketing.us

View this publication online at www.lincolnmarketing.us

LOCAL AREA EVENTS

JANUARY

Freeze Yer Gizzard Blizzard Runs | International Falls
Ice Box Days | International Falls
Arrowhead Ultra 135 | International Falls
MN Hockey Day | Warroad
Discover Warroad
Annual Ice Fishing Derby | International Falls

FEBRUARY

Warroad Lions Annual Ski Plane Fly-In Breakfast
Mardi Gras | Warroad
Springsteel Fishing Derby | Warroad

MARCH

Annual KC Pro West Kids Snowmobile Racing | Roseau
Annual Speed Run Against Cancer | International Falls
Everything Rosy | Warroad
Yeti Fest | Warroad

APRIL

Annual Lifecare Partners for Health Gala | Roseau

MAY

Memorial Celebration | Greenbush
Community Wide Garage Sale | Roseau
Father Daughter Dance | Warroad
Warroad Summer Theater Dinner & Show

JUNE

Annual NCC Motorhead Classic | Warroad
Willie Walleye Weekend | Baudette
Kickin' Up Country | Warroad
Hoopfest | Warroad
Mud Mayhem | Roseau
Northborn Days | Warroad
Veterans ATV Fun Run | Warroad
Annual Sven & Ole's Car & Bike Show | Roseau
Warroad Community Wide Garage Sale
Rhubarb Festival | Warroad
Summer in the City Festival | Warroad

JULY

4th of July | Baudette
Old Fashioned 3rd & 4th of July | Big Falls
4th of July Celebration | Greenbush
Independence Day Celebration | International Falls
Northern Minnesota District Fair | Littlefork
Flea Market | Rosevelt
Roseau County Fair | Roseau
Traditional Independence Day Celebration | Warroad
Lake of the Woods County Fair | Baudette
Annual Art in the Park | Roseau
Bike & Car Show | Warroad
Founders Day Ice Cream Social | Warroad
Live Life on the Ice with Stars & Stripes | Warroad
Annual Little Shop of Treasures Swap Meet | Rosevelt

AUGUST

Mercury Marine MN State Championship | Baudette
Koochiching County Fair | Northome
Ranier Summer Festival | International Falls
Threshing Bee | Roosevelt, Warroad
Bass Championship | International Falls
Crazy Days | Roseau
Annual Art in the Yard | Warroad
Yellow Rose Days | Warroad
North Country Cruisers Car Club Cruise Night | Warroad
Warroad Walk
Off the Charts Music Fest | Warroad
Lake of the Woods Steam & Gas Show | Rosevelt

SEPTEMBER

Annual Fall Festival | Badger
Northland Threshing Bee | Strathcona
Annual Roseau Scandinavian Festival
Annual Seven Clans Charity Golf Tournament | Warroad

OCTOBER

Annual Community Halloween Party | Badger
Annual Greenbush Halloween Party | Greenbush
Potato Days | Williams
Fall Festival | Strathcona
Hock'tober Fest | Warroad
Oktobeerfest | Roseau
Halloween Special & Trick or Treating | Warroad
Roseau Fall Harvest Fest

NOVEMBER

Frost Fest | Baudette
Holiday Crafter & Vendor Extravaganza | Baudette
Annual Arts & Crafts Show & Sale | Roseau
St. Marys Fall Dinner | Warroad
Warroad Community Thanksgiving Dinner
Annual Light Up the Holidays | Warroad

DECEMBER

Night of Lights | Roseau
Holiday Sale & Open House | Northome
Monkey Day | Greenbush
Operation Holiday Basket | Rosevelt
Christmas at the Farm | Roseau
Christmas Open House | Warroad
Holiday Extravaganza | Warroad

****For more information on events throughout Roseau, Lake of the Woods and Koochiching Counties, visit <http://www.exploreminnesota.com>***

****Event dates and details are subject to change***

RESIDENTIAL SERVICES

ROSEAU COUNTY

Assessor.....	(218)463-1861
Attorney	463-4100
Auditor	463-1282
Court Administrator	463-2541
County Coordinator	463-4248
Crimes Victim Services	463-4214
Emergency Management	463-3375
Environment.....	463-3750
Extension	463-1052
Highway	463-2063
Information Technology	463-4247
Recorder	463-2061
Sheriff	463-1421
Social Services	463-2411
Treasurer.....	463-1215
Veterans Services	463-3308

KOOCHICHING COUNTY

Assessor.....	(218)283-1122
Attorney	283-1131
Auditor/Treasurer.....	283-1102
Community Services	283-7000
County Health	283-7070
Court Administrator	283-1160
Environment	283-1157
Extension	324-2709
Information Technology	283-1171
Land & Forestry	283-1127
Probation.....	283-1113
Recorder	283-1193
Sheriff.....	283-4416
Surveyor	283-1177
Veterans Services	283-1179

LAKE OF THE WOODS COUNTY

Assessor.....	(218)634-2536
Attorney	634-1190
Auditor/Treasurer.....	634-2836
Court Administrator	634-1450
Emergency Management	634-4547
Extension.....	634-1511
Land & Water	634-1945
Medical Examiner	634-1655
Public Health	634-1795
Public Works	634-1767
Recorder	634-1902
Sheriff	634-1143
Social Services	634-2632
Surveyor	634-3050
Veterans Services	634-2219





Americinn
BY WYNDHAM

BRAND NEW LOCATION
PUB BEER/WINE & PULL TABS

FREE BREAKFAST | INDOOR POOL +
HOT TUB | GUEST RECEPTION
WI-FI | DOG-FRIENDLY
NEAR US + CANADIAN BORDER

**Americinn by Wyndham | 2500 Keenan Drive
International Falls, MN 56649 | 218-209-2487**



Roseau County was established in 1894 and received an addition from Beltrami county later in 1896. It is named from the Roseau Lake and River which are located in the county. Many early settlers arrived to the area in search of timber and farming land for agriculture. The city of Roseau was named County Seat after its incorporation in 1895. Railroad expansion allowed for development and by 1900 the county saw a growth in industry and businesses. By 1920 Roseau County had a population of 13,305 people. The area has since become a very important spot for passage and trade between the United States and Canada. Today Roseau County is home to approximately 15,911 residents.

BADGER – pop. 459

GREENBUSH – pop. 739

ROOSEVELT – pop. 161

ROSEAU (COUNTY SEAT) – pop. 2,758

STRATHCONA – pop. 28

WARROAD – pop. 1,656

**Populations are approximate.*

BADGER

Badger was first settled by J. W. Durham in 1884 and was named after Badger Creek, which flows northwest of the city and is also a tributary to the Roseau River. The first post office was established in 1889 and as railroad lines were constructed, Badger began to thrive. Badger was incorporated as a village in 1906 and businesses were organized to meet the growing needs of the community. The village was later incorporated as a city in 1968. Today Badger is home to approximately 459 residents.

GREENBUSH

The name of Greenbush is derived from the Ojibwe Indian word “Sha Ach Wah,” which means spruce tree or green bush. Settlers arrived in the 1800s and were mainly of Scandinavian descent. The post office was established in 1892 and the railroad arrived soon after running through the town to Warroad. As the area began to develop, schools, churches, stores, mills and blacksmith shops were built and the area continued to grow. Greenbush officially was incorporated as a city in 1905. Today Greenbush is home to approximately 739 residents.

ROSEAU (COUNTY SEAT)

Roseau was settled in 1888 and was named like the county for the Roseau Lake and River. The city was platted in 1892 and later incorporated in 1895, the same year the post office was established. Roseau was selected as the county seat and as the railroad was built in 1900, the area continued to develop. Roseau became a gateway to Canada in 1930 and new business and industry made the community prosperous. Roseau later became a commercial entry port to Canada in 1989. The community has become very popular for summer and winter travelers due to its proximity to a variety of lakes. Today Roseau is home to approximately 2,758 residents.

STRATHCONA

Strathcona was named in honor of Donald Alexander Smith, who later became Baron Strathcona, of Scotland. The first settlers arrived in the area in the late 1890s and Charlie Gunheim, built the first store in the city in 1904. Hans Lerum served as the first postmaster when the post office was established in 1905. As railroads arrived business and industry began to thrive in the community. Today Strathcona is home to approximately 28 residents.

WARROAD

Warroad was once the largest Chippewa Indian village in the area. The name comes from the area where both the Chippewa and Sioux Indians often fought their wars along the trails of the Warroad River. Early settlement began in the late 1800s and by 1900 Warroad supported strong commercial fishing operations. The community was incorporated in 1901 and a school, churches and businesses were established. As commercial fishing declined in the mid 1900s tourism became the main sustenance for the local economy drawing sport fisherman due to Warroad’s location on Lake of the Woods. Today Warroad is home to approximately 1,656 residents.



Lake of the Woods County was named after Lake of the Woods as its shores lie to the north of the county and it is also the most northern point of the continental United States. Settlement began in the early 1900s but the area was discovered as early as the late 17th century by French explorers. Most settlers were fur traders or loggers looking for good land for timber and places to trade. As the area grew, residents decided to separate from Beltrami County and form their own. Lake of the Woods County was established in 1922 making it the youngest county in Minnesota. By 1930 Lake of the Woods County had a population of 4,194 people. Today Lake of the Woods County is home to approximately 3,880 residents.

ANGLE INLET – pop. 162
BAUDETTE (COUNTY SEAT) – pop. 925
ROOSEVELT – pop. 161

WILLIAMS – pop. 178
**Populations are approximate.*

ANGLE INLET

Angle Inlet is the northern most community located in Minnesota. The townsite was an ideal location for travelers to dock their boats on Lake of the Woods during their journeys between Minnesota and Winnipeg, Canada. The first post office was established in 1936 and Angle Inlet has become a very popular tourist destination and is known for its excellent fishing. Currently the only travel options to Angle Inlet from Minnesota is by boat or plane until Lake of the Woods freezes over in the winter months. Today Angle Inlet is home to approximately 162 residents.

BAUDETTE (COUNTY SEAT)

Baudette was settled in the early 1880s and was named after Joseph Baudette, a trapper who was also one of the first settlers in the area. The city began as a steamboat landing and lumber town with a sawmill, following the railroad coming through in 1901. A post office was established in 1900 and the city was incorporated as a village in 1907. As the lumber industry grew, Baudette became a hub for business and soon became the most populous city in the area. With the decline of the lumber industry after a forest fire in 1910, agriculture became the largest source of income for the local economy. Baudette was named the county seat of Lake of the Woods County when it was established in 1923. Today Baudette is home to approximately 925 residents.

ROOSEVELT

Located in both Roseau and Lake of the Woods Counties, Roosevelt was named in honor of Theodore Roosevelt, the 26th president of the United States. Residents were attracted to the nearby Lake of the Woods and a post office was established in 1901, soon after the first settlers arrived. As the railroads arrived in 1904 industry thrived and new businesses, churches and a school were founded. Today Roosevelt is home to approximately 161 residents.

WILLIAMS

Williams was settled in the early 1900s by pioneers in search of fertile soil. The community was incorporated as a village in 1922 and developed into a railroad shipping center for timber products. The original name for the village was “The Siding” but it was later changed and named in honor of William Mason and George Williams, the first settlers in the area. Today Williams is home to approximately 178 residents.



*K*oochiching County's name was derived from the Ojibwe Indian word "Koochiching" meaning "at the place of inlets," referring to the neighboring Rainy Lake and River. Many of the first settlers arrived to the area in the 1880s and were fur traders and loggers looking for places to set up camps. With the arrival of the railroad, businesses and industry began to develop and allowed for transportation so new residents could enter the area. The county was officially established in 1906 after it broke off from Itasca County. By 1920 Koochiching County had a population of 13,520 people. Koochiching County has since become a popular tourist destination offering a variety of recreational activities year round. Today Koochiching County is home to approximately 13,128 people.

BIG FALLS – pop. 236

INTL. FALLS (COUNTY SEAT) – pop. 5,906

LITTLEFORK – pop. 680

MIZPAH – pop. 71

NORTHOME – pop. 207

RANIER – pop. 168

**Populations are approximate.*

BIG FALLS

Big Falls is named after the Big Fork River which runs through the town and has numerous waterfalls. The area was first settled in the late 1880s and was a popular trading camp for fur traders. By the early 1900s it became a logging community due to the vast amounts of timber and waterways in the area. Railroad lines came in 1905 and with them came a growth in business and industry. Farming developed as timber was cleared from the land and helped the community grow after the decline of the lumber industry. Today Big Falls is home to approximately 236 residents.

INTERNATIONAL FALLS (COUNTY SEAT)

The community was platted in 1895 by L. A. Ogaard, a teacher and preacher, for the Koochiching Company and named the community Koochiching. The word "Koochiching" is derived from either the Ojibwe word Gojijiing or Cree Kocihk, both meaning "at the place of inlets." The city was incorporated as a village in 1901 and was later renamed to International Falls because of its location on the border of the United States and Canada. The community was an important area for the lumber industry and offered both Canada and Minnesota a place for business and trade. Lumber mills and dams were erected all over the nearby river and the area became very prosperous and International Falls was incorporated as a city in 1909. Currently the area is often referred to as the coldest city in the continental United States. Today International Falls is home to approximately 5,906 residents.

LITTLEFORK

Settlers arrived to Littlefork in 1905 and found the region covered with cedar, spruce, balsam, tamarack, and some white pine. Logging led local industry and the area was used as a transportation hub for sending timber to International Falls. Its proximity to the Rainy and Little Fork River helped the area transport timber faster than any other community in the area. With the decline of the lumber industry, Littlefork became very prosperous as a farming community. Today Littlefork is home to approximately 680 residents.

MIZPAH

Mizpah was first settled in 1900 and the post office was established in 1901. The community was incorporated as a village in 1905 and it was named for the Hebrew word for watchtower. Early industry was centered around logging and many jobs were created as a result. As rail lines were constructed, the area began to grow and business began to thrive. Today Mizpah is home to approximately 71 residents.

NORTHOME

Settled in the late 1890s, Northome was originally named New Bridgie. The post office was established in 1902 the community's name was changed to Phena. The city was incorporated in 1903 & the name was changed once again to Northome. The railroads arrived in 1903 bringing new residents, industry and businesses to the area. Churches and schools were established as demand grew and as the population grew steadily. Today Northome is home to approximately 207 residents.

RANIER

Ranier was first settled in 1898 by John A. Holler, a U.S. customs officer. Settlers were attracted to the ample natural resources and access to water. Businesses and schools were established to meet the growing needs of the community and development of the railroad in 1907 added to its growth. Ranier was incorporated in 1908 and the area continued to flourish. The city separated from its township in 1919 and was named Ranier after a Duluth, Rainy Lake and Winnipeg Railway officer. Today Ranier is home to approximately 168 residents.

FRANZ JEVNE STATE PARK

MN-11 | Birchdale | (218) 783-6252
 Located on 118 acres near Birchdale, Franz Jevne State Park offers great fishing opportunities on the Rainy River, picnic areas and hiking and nature trails.

GARDEN ISLAND STATE PARK

3684 54th Ave. NW | Williams | (218) 783-6252
 Located 19 miles north of the southern point of Lake of the Woods, Garden Island State Park is the northern most state park located in Minnesota. The park offers picnic areas, excellent wildlife viewing and fishing opportunities.

HAYES LAKE STATE PARK

48990 Co. Rd. 4 | Roseau | (218) 425-7504
 Located on 2,950 acres south of Roseau, Hayes Lake State Park features nature trails, a history trail, a bog boardwalk and wildlife viewing opportunities.

PINE ISLAND STATE FOREST

Big Falls | (651) 296-6157
 Pine Island State Forest encompasses 878,040 acres and is the largest of all the state forests in Minnesota. The Big Bog River Trail runs through the forest and is excellent for canoeing and fishing opportunities. The forest features picnic shelters, nature trails, wildlife viewing opportunities and hunting areas.

SCENIC STATE PARK

56956 Scenic Hwy. | Bigfork | (218) 743-3362
 Located on 3,360 acres near Bigfork, Scenic State Park features a year round campground, hiking and nature trails, fishing and canoeing opportunities and restroom facilities.

ZIPPEL BAY STATE PARK

3684 54th Ave. NW | Williams | (218) 783-6252
 Located 16 miles northwest of Baudette on Lake of the Woods, Zippel Bay State Park features fishing opportunities, a swimming beach, camping areas, picnic areas, excellent bird watching opportunities and three miles of snowmobile trails during the winter months.

**For more information on parks and recreation throughout Northern Minnesota, visit online at www.dnr.state.mn.us*

BOOST YOUR BUSINESS

CALL NOW

651-788-9323

LincolnMarketing
www.lincolnmarketing.us SINCE 1984

Healthy & Environmentally Friendly Lawn

Choose a type of grass that thrives in your area. 3" is the optimal height for most grasses, it allows the roots to become strong and healthy. It also helps to absorb more water. Don't bag the lawn clippings, it's a natural fertilizer. Keep your mower blades sharp.



Don't water every day. Give your lawn a good soaking once or twice a week. Your lawn should get about an inch of water each week, whether it be from rain fall or a sprinkler. Water your lawn in the early morning, preferably before 10am. Watering at night time can create fungus growth.



Don't use pesticides. Correctly identify what the problem is and try a non-chemical method first. If you have to use a chemical based pesticide, try spot treating the problem area. All pesticides are toxic to some degree. Make sure to read all labels.



Fertilizers can harm the environment. Use natural organic or slow-release fertilizers. The best time to fertilize your lawn is in the fall.



GO GREEN

Reduce, Reuse, Recycle

reduce waste, reuse materials & recycle properly



Cut back on single-use plastics, conserve water, drive less



Community/Home Gardens: Really good at absorbing carbon dioxide. Cuts down on pesticides/fertilizers. Also benefits mental health and provides fresh food.

Composting: Decreases the amount of trash in landfills and reduces carbon emissions.

Plant Trees: Planting trees is a classic Earth Day activity.

Local Food: Buy local sustainable food.

Clean-Up Events: Organize or participate in local clean-up efforts.

Upcycle Crafts: Get creative by turning old items into new useful objects.



AREA ATTRACTIONS

BAUDETTE COMMUNITY SWIMMING POOL

210 NE 3rd Ave. | Baudette | (218) 634-3162

CINE 5

1319 3rd St. | Intl. Falls | (218) 283-3063

GRAND THEATRE

215 Main Ave. | Baudette | (218) 634-1376

KENNY LANES

109 E 4th Ave. | Baudette | (218) 242-6838

KOOCHICHING COUNTY HISTORICAL MUSEUM & BRONKO NAGURSKI MUSEUM

214 6th Ave. | Intl. Falls | (218) 283-4316

LAKE OF THE WOODS COUNTY MUSEUM

119 8th Ave. SE | Baudette | (218) 634-1200

NORRIS CAMP

11536 Faunce Butterfield Forest Rd. | Roosevelt | (218) 783-6831

NORTHLAND RANGE AND GUN CLUB

Highway 310 | Roseau | (218) 242-2285

OAK CREST GOLF COURSE

310 5th St. SE | Roseau | (218) 463-3016

OAK HARBOR GOLF COURSE

2805 NE 24th St. | Baudette | (218) 634-9939

POLARIS EXPERIENCE CENTER

205 SW 5th Ave. | Roseau | (218) 463-4999

RONNING'S

207 Main Ave. N | Roseau | (218) 463-0011

ROSEAU CITY DISC GOLF COURSE

30447 11th Ave. SE | Roseau | (218) 463-1542

ROSEAU COUNTY HISTORICAL SOCIETY & MUSEUM

121 E Center St. | Roseau | (218) 463-1918

ROSEAU PIONEER FARM AND VILLAGE

36565 MN-11 | Roseau | (218) 463-1045

ROSO THEATRE

310 N Main Ave. | Roseau | (218) 463-2601

SEVEN CLANS CASINO

34966 605th Ave. | Warroad | (800) 815-8293

SPORTSMEN'S SERVICE WILDLIFE MUSEUM

424 3rd Ave. | Intl. Falls | (218) 283-2411

THE BAUDETTE DEPOT

418 Tower Dr. | Baudette | (218) 590-6407

THE SHED AUTOMOBILE MUSEUM

44 State Ave. | Warroad | (218) 386-2211

VOYAGEURS OUTFITTERS

3655 MN-11 | Intl. Falls | (218) 324-1863

WARROAD HERITAGE CENTER & MUSEUM

202 NE Main Ave. | Warroad | (218) 386-2500

WARROAD PUBLIC LIBRARY

202 NE Main Ave. | Warroad | (218) 386-1283

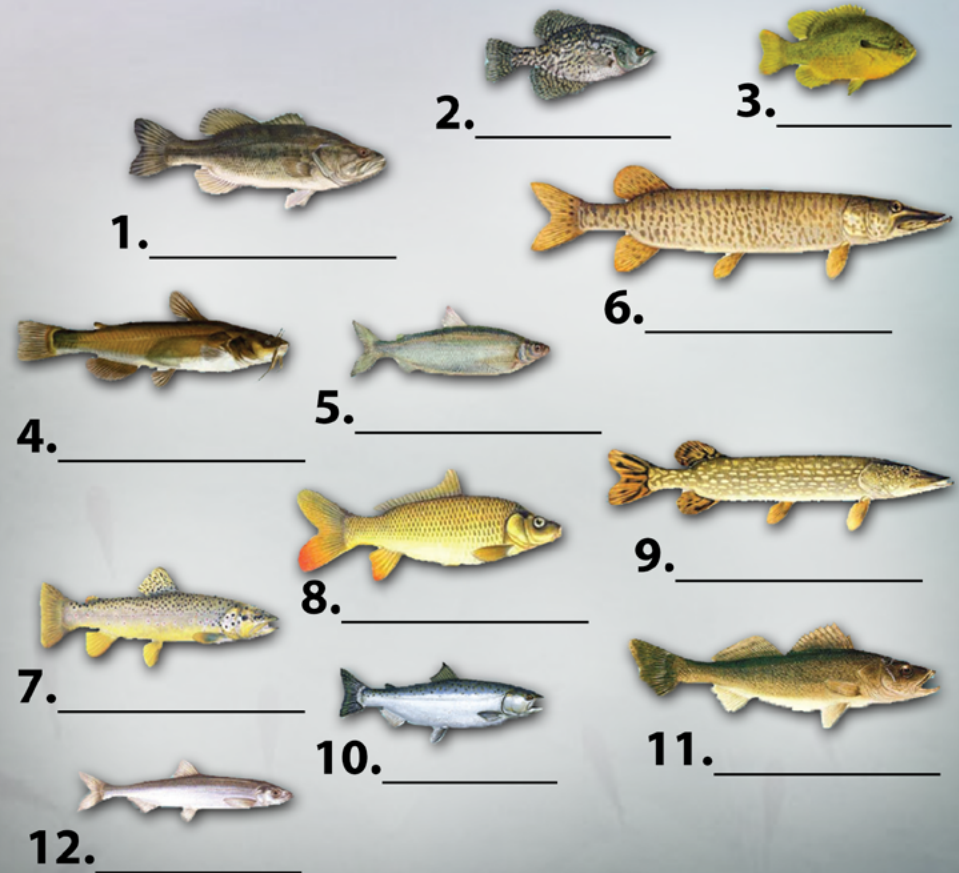
WARROAD SUMMER THEATRE

510 NW Cedar Ave. | Warroad | (218) 242-3476



MIDWEST FISH QUIZ

Do you know the Midwest fish species?
Identify the fish below.



Answers: 1. Bass 2. Crappie 3. Sunfish 4. Catfish 5. Herring 6. Muskellunge 7. Trout 8. Carp 9. Northern Pike 10. Salmon 11. Walleye 12. Smelt

HUNTING SEASONS

For general information on firearm safety training call: 1 (888) 646-6367 or (651) 296-6157.

Contact the MN DNR for specific zone areas/dates:

Online: www.dnr.state.mn.us, Toll Free: 1 (888) 665-4236.

You can purchase hunting and fishing licenses by phone: 1 (888) 665-4236.

HUNTING

Bear

08/16/24 Baiting start date - Permit areas & no-quota area
09/1/24 - 10/13/24 Permit areas & no-quota area

Deer

09/14/24 - 12/31/24 Archery - Statewide
10/17/24 - 10/20/24 Early Antlerless
10/17/24 - 10/20/24 Youth - Statewide
11/9/24 - 11/24/24 Firearm (Season A) 100 Series permit areas
11/9/24 - 11/17/24 Firearm (Season A) 200 & 300 Series permit areas
11/23/24 - 12/1/24 Firearm (Season B) 300 Series permit areas
11/30/24 - 12/15/24 Muzzleloader - Statewide

Badger

10/19/24 - 03/16/25 North furbearer zone
10/26/24 - 03/16/25 South furbearer zone

Bobcat

12/14/24 - 01/19/25
North of I-94 & U.S. Highway 10

Fox, Gray & Red

10/19/24 - 03/15/25 North furbearer zone
10/19/24 - 03/15/25 South furbearer zone

Opossum

10/19/24 - 03/15/25 North furbearer zone
10/19/24 - 03/15/25 South furbearer zone

Rabbit

09/14/24 - 02/28/25 Jack - Statewide
09/14/24 - 02/28/25 Cottontail & Snowshoe Hare - Statewide

Raccoon

10/19/24 - 03/15/25 North furbearer zone
10/19/24 - 03/15/25 South furbearer zone

Squirrel, Gray & Fox

09/14/24 - 02/28/25 Gray & Fox - Statewide

Grouse

09/14/24 - 01/1/25 Ruffed & Spruce - Statewide
09/21/24 - 12/4/24 Sharp-Tailed - Northwest zone

Pheasant

10/12/24 - 01/1/25 Ring-Necked - Statewide

Wild Turkey

04/17/24 - 05/31/24 Spring - Youth - Statewide
04/17/24 - 05/31/24 Spring - Archery - Statewide
04/17/24 - 04/23/24 Spring - A season - Statewide
04/24/24 - 04/30/24 Spring - B season - Statewide
05/1/24 - 05/7/24 Spring - C season - Statewide
05/8/24 - 05/14/24 Spring - D season - Statewide
05/15/24 - 05/21/24 Spring - E season - Statewide
05/22/24 - 05/31/24 Spring - F season - Statewide
09/28/24 - 10/27/24 Fall - Statewide

TRAPPING

Badger

10/19/24 - 03/16/25 North furbearer zone
10/26/24 - 03/16/25 South furbearer zone

Bobcat

12/14/24 - 01/19/25 North of I-94 & U.S. Highway 10

Fox

10/19/24 - 03/15/25 Gray & Red - North furbearer zone
10/19/24 - 03/15/25 Gray & Red - South furbearer zone

Opossum

10/19/24 - 03/15/25 North furbearer zone
10/19/24 - 03/15/25 South furbearer zone

Rabbit

09/14/24 - 02/28/25 Jack - Statewide
09/14/24 - 02/28/25 Cottontail & Snowshoe Hare - Statewide

Raccoon

10/19/24 - 03/15/25 North furbearer zone
10/19/24 - 03/15/25 South furbearer zone

Squirrel

09/14/24 - 02/28/25 Gray & Fox - Statewide

*Check the MN DNR website for updates.

<https://www.dnr.state.mn.us>

or scan the QR code



"ON BEAUTIFUL ASH RIVER" Ash River Trail, Orr, MN 55771



BAR & GRILL HOURS: MON-SUN 11AM-CLOSE
Open Everyday. Call or check Facebook
for updates on early closings.

- Full Bar & Restaurant/Lunch-Dinner
- On/Off Sale Liquor-Beer • Pull Tabs/E-Tabs
- Bloody Mary's, Pizza, Burgers, Wings • 3 Hotel Rooms & 12 Log Cabins/Condos Available
- Fuel • Boat & House Boat Rentals
- Snowmobile Rentals & Ice
- Fishing Shack Rentals • Trail Reports



CALL FOR RESERVATIONS: 218-374-3181
WEBSITE FOR MORE INFO www.AshKaNam.com

You can purchase hunting and fishing licenses, cross-country ski passes and snowmobile trail stickers through the Electronic License System. Online www.dnr.state.mn.us, Toll Free: 1 (888) 646-6367
Or visit one of the ELS agents available throughout the area:

BADGER

ROSEAU COUNTY COOP
111 Hwy. 11 | Badger | (218) 528-3293

BAUDETTE

BALLARD'S RESORT
3314 Bur Oak Rd. | Baudette | (218) 634-1849

BORDER BAIT COMPANY, LLC.

3371 Hwy. 172 NW | Baudette | (218) 634-1180

CENEX COOP SERVICE, INC.

903 W Main Ave. | Baudette | (218) 634-1313

HOLIDAY STATIONSTORE - #212

109 Main St. E | Baudette | (218) 634-2210

HOMETOWN HARDWARE

804 Main St W | Baudette | (218) 634-3366

HOWARD'S OIL CO.

509 Main St. W | Baudette | (218) 634-2550

LOG CABIN BAIT & TACKLE

3263 Fishery Rd. NW | Baudette | (218) 343-1517

MORRIS POINT RESORT

3812 42nd Ave. NW | Baudette | (218) 634-2570

NELSON'S STORE

10380 Hwy. 11 | Baudette | (218) 634-2583

OUTDOORS AGAIN

409 Main St. W | Baudette | (218) 634-3344

STEVE'S LUCKY BAIT

1222 Main St. E | Baudette | (218) 634-1019

BIG FALLS

PRITCHARD'S CORNER LLC
201 US Hwy. 71 | Big Falls | (218) 276-3400

GREENBUSH

GREENBUSH ACE HARDWARE
215 Main St. | Greenbush | (218) 782-2110

RIVER'S EDGE BAIT & CONVENIENCE

120 Hwy. 11 E | Greenbush | (218) 782-2339

INTERNATIONAL FALLS

EDWARDS LUCKY SEVEN GENERAL STORE
1130 3rd Ave. | Intl. Falls | (218) 283-9337

HOWARDS CENEX EAST

100 Memorial Dr. | Intl. Falls | (218) 283-9440

RAINY LAKE HOUSEBOATS

2031 County Rd. 102 | Intl. Falls | (218) 266-5391

RAINY LAKE ONE STOP

3202 Hwy. 11 E | Intl. Falls | (218) 286-5700

SPORTSMENS SERVICE

424 3rd Ave. | Intl. Falls | (218) 283-2411

THE OUTDOORSMAN'S HEADQUARTERS

1130 3rd Ave. | Intl. Falls | (218) 283-9337

LITTLEFORK

POLKINGHORNE'S HARDWARE HANK
404 Main St. | Littlefork | (218) 278-6611

MIZPAH

REINARZ STATION
11458 Hwy. 71 | Mizpah | (218) 897-5989

NORTHOME

FISHER PETROLEUM, INC.
12227 2nd Ave. | Northome | (218) 897-5249

NORTHOME TRUE VALUE

12063 Main St. | Northome | (218) 897-5648

ROOSEVELT

KNUTSON'S GROCERY
280 Main Ave. | Roosevelt | (218) 442-5315

PERCY'S PLACE

Hwy. 11 | Roosevelt | (218) 442-6211

ROSEAU

CENEX C-STORE
1504 W Center St. | Roseau | (218) 463-3722

COAST TRUE VALUE

108 N Main Ave. | Roseau | (218) 463-2552

DENNY'S OUTDOOR SPORTS

1002 NE 3rd St. | Roseau | (218) 463-9913

HOLIDAY STATIONSTORE - #193

503 NW 3rd St. | Roseau | (218) 463-1496

ROSEAU HARDWARE, LLC.

1114 3rd St. NW | Roseau | (218) 463-2175

SALOL

SALOL 1 STOP
32598 482nd Ave. | Salol | (218) 463-0110

WANNASKA

SKIME STORE
10432 Cty. Rd. 9 | Wannaska | (218) 425-3086

RIVERFRONT STATION, LLC.

18144 Hwy. 89 | Wannaska | (218) 425-7679

WARROAD

FARMERS UNION OIL CO.
418 SW State Ave. | Warroad | (218) 386-1318

HOLIDAY STATIONSTORE - #235

203 N State Ave. | Warroad | (218) 386-3201

HOLIDAY STATIONSTORE - #342

901 N State St. | Warroad | (218) 386-1700

MARVIN HOME CENTER

104 N State Ave. | Warroad | (218) 386-2570

SPRINGSTEEL RESORT, INC.

38004 Beach St. | Warroad | (218) 386-1000

STREIFF SPORTING GOODS

34480 550th Ave. | Warroad | (218) 386-2590

WILLIAMS

ANDY'S GARAGE, INC.
245 Hwy. 11 | Williams | (218) 783-6155

ZIPPEL BAY RESORT

6080 39th St. NW | Williams | (800) 222-2537



- ◆ **Wear Blaze Orange!** Being mistaken for a deer, can be deadly
- ◆ **Scout the Area:** Before the hunting season begins, spend time scouting the hunting area. Look for deer signs such as tracks, droppings, rubs, and scrapes
- ◆ **Practice Stealth and Scent Control:** Deer have an excellent sense of smell and can be easily spooked by human scent
- ◆ **Know the Local Regulations and Laws:** Before you head out on your hunting trip, familiarize yourself with the local hunting regulations and laws.



Remember that ethical hunting practices, respect for wildlife, and safety should always be paramount while participating in any hunting activity. Additionally, always make sure to follow local hunting guidelines and regulations to protect the environment and wildlife populations. 
HAPPY HUNTING!

FISHING SEASONS

INLAND WATERS

Lake Trout

12/30/23 - 03/31/24

Lakes entirely within the BWCA

Lake Trout

01/13/24 - 03/31/24

Lakes partially or completely outside the BWCA

Bullhead

03/01/24 - 02/28/25

Burbot (eelpout)

03/01/24 - 02/28/25

Channel Catfish

03/01/24 - 02/28/25

Cisco (tullibee), whitefish

03/01/24 - 02/28/25

Crappie

03/01/24 - 02/28/25

Gar

03/01/24 - 02/28/25

Other

03/01/24 - 02/28/25

Perch

03/01/24 - 02/28/25

Rock Bass

03/01/24 - 02/28/25

Smelt

03/01/24 - 02/28/25

Sunfish

03/01/24 - 02/28/25

White Bass

03/01/24 - 02/28/25

Flathead Catfish

04/01/24 - 11/30/24

Largemouth Bass

05/11/24 - 02/23/25

Northeastern Minnesota

Northern Pike

05/11/24 - 02/23/25

Sauger

05/11/24 - 02/23/25

Smallmouth Bass

05/11/24 - 02/23/25

Northeastern Minnesota

Walleye

05/11/24 - 02/23/25

Largemouth Bass

05/25/24 - 02/28/25,

Statewide except the northeast

Smallmouth Bass

05/25/24 - 09/08/24,

Statewide except the northeast

Sturgeon - catch-and-release

06/16/24 - 04/14/25

Smallmouth Bass - catch-and-release

09/09/24 - 02/23/25,

Statewide except the northeast

**Contact the MN DNR for specific zone information/dates:*

1 (888) 646-6367

www.dnr.state.mn.us

scan the QR code



(Fishing licenses are effective from March 1 to the last day of February of the following year. A fishing license for the current 2024-25 license year is effective until Feb. 29, 2025.)



GAS . DIESEL . PROPANE

LOCATED AT HWY 11 AND 89 ROSEAU, MN
218.463.3722



Shop. Dine. Play. Stay.
LOCALLY and help support businesses throughout your area.

Boating safety is critical for anyone who operates a boat or spends time on the water. Here are some general boating safety tips to keep in mind:

• **Wear a life jacket:** Always wear a life jacket while boating. Make sure the life jacket is appropriate for your weight and is U.S. Coast Guard approved. • **Know the weather:** Check the weather forecast before you go boating and keep an eye on changing conditions. If you notice darkening clouds, rough winds or sudden drops in temperature, get off the water. • **Use navigation aids:** Use navigation aids like buoys and beacons to help you navigate safely. • **Maintain your boat:** Keep your boat well-maintained and in good working condition. Make sure all safety equipment is in good condition and functioning properly. • **Avoid alcohol:** Do not drink alcohol while operating a boat. It is illegal and increases the likelihood of accidents. • **Watch your speed:** Observe speed limits and maintain a safe speed based on conditions. Remember, slower speeds may be necessary in crowded areas or in inclement weather. • **Be aware of other boats:** Watch for other boats and be aware of their movements. Always assume other boaters may not see you. • **Know the rules:** Learn and follow boating safety laws and regulations. This includes rules for navigation, safety equipment, and right-of-way. • **File a float plan:** Always let someone know where you are going and when you plan to return. File a float plan with a trusted person or a marina. • **Take a boating safety course:** Consider taking a boating safety course to improve your skills and knowledge.



By following these general boating safety tips, you can reduce the likelihood of accidents and enjoy a safe and enjoyable time on the water.

YOUR Help is NEEDED!

Do
NOT
Transport
Invasive:
• Fish
• Invertebrates
• Aquatic Plants



CLEAN. DRAIN. DISPOSE.

KNOW THE LAW! YOU MAY NOT...

- TRANSPORT WATERCRAFT WITHOUT REMOVING THE DRAIN PLUG.
- ARRIVE AT LAKE ACCESS WITH DRAIN PLUG IN PLACE.
- TRANSPORT AQUATIC PLANTS, ZEBRA MUSSELS, OR OTHER PROHIBITED SPECIES ON ANY ROADWAY.
- LAUNCH A WATERCRAFT WITH PROHIBITED SPECIES ATTACHED.
- TRANSPORT WATER FROM LAKES OR RIVERS.
- RELEASE BAIT INTO THE WATER.

Mosquitoes

Prevention & Health Risks



A MOSQUITO FREE YARD

Create an environment in your yard that invites animals that like to eat mosquitoes. Some things that enjoy eating mosquitoes are:

- Bats • Frogs • Fish • Turtles • Birds • Dragonflies



To help repel mosquitoes, plant some of the different vegetation listed:

- Citronella • Geranium • Eucalyptus • Rosemary • Basil • Anise • Mint • Marigolds • Catnip • Wormwood • Tansy • Lavender • Cedar • Cloves

Don't have stagnant water sitting around in things like buckets or tires.

BE SAFE WHILE OUTDOORS

When a mosquito bites you it can leave saliva in your body. If the mosquito is infected it can transfer diseases to you. A few of the more common diseases transmitted to people are:

- Dengue • Encephalitis • Malaria • Yellow Fever.

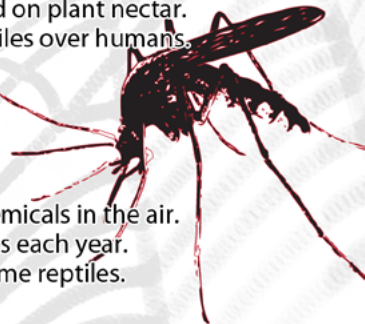
Mosquitoes can also transmit diseases to animals. A couple of these diseases are:

- Heartworm (mostly to dogs & cats) • Encephalitis.

To reduce your chance of getting a disease from mosquitoes you can, apply mosquito repellent to your skin and clothing.

RANDOM MOSQUITO FACTS

- More than 3,000 different mosquito species can be found around the world.
- There are around 50 different mosquito species in the Upper Midwest.
- Female mosquitoes feed on blood. Male mosquitoes feed on plant nectar.
- Some mosquito species prefer to feed on animals or reptiles over humans.
- All mosquitoes need water to complete their life cycle.
- One female mosquito can lay over 200 eggs at one time.
- Mosquito larvae only need a week in water to hatch.
- Mosquito eggs can survive for more than five years.
- Mosquitoes can fly around 1 to 2 mph.
- Mosquitoes find food by sight, infrared radiation and chemicals in the air.
- Around 1,000 Americans get ill or die from mosquito bites each year.
- Mosquitoes are a huge food source for birds, bats and some reptiles.



TICKS

Diseases & Prevention



You can get a tickborne disease if you are bitten by a tick that is infected • Tickborne diseases are increasing throughout the United States. • Personal protection methods can help reduce the odds of a tick bite while enjoying the outdoors

Some symptoms of a tickborne disease

- Many tickborne diseases have similar symptoms
 - Symptoms usually show up within 2-4 weeks of being bitten
- Watch for symptoms like:

- Rash
- Fever
- Headache
- Fatigue
- Muscle or joint aches



Tick Removal

Prompt tick removal is important.

Use tweezers to grasp the tick close to its mouth. Gently and slowly pull the tick straight outward.

Do not squeeze the ticks' body.

Wash the area and apply an antiseptic to the bite.

Watch for early signs and symptoms of a tickborne disease. Don't use folk remedies like Petroleum Jelly or a burnt match.



Blacklegged Tick Coverage

American Dog Tick Coverage

Lone Star Tick Coverage

Blacklegged (Deer) Tick
Lyme disease
Anaplasmosis
Babesiosis
Ehrlichiosis
Powassan virus disease

American Dog (Wood) Tick
Rocky Mountain Spotted Fever
Tularemia

Lone Star Tick
Ehrlichiosis
Tularemia
Heartland virus disease
Southern Tick-Associated Rash Illness (STARI)

Protect Yourself from Tickborne Diseases

1-Know when and where you're at risk

- Primarily Mid-May through Mid-July
- Wooded and brushy areas – Blacklegged Tick
- Grassy or wooded areas – American Dog Tick

2-Wear EPA-registered tick repellent

- DEET 20-30% on skin or clothing
- Permethrin 0.5% on clothing

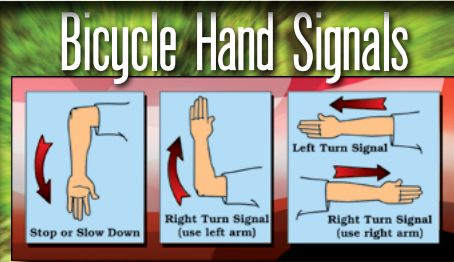
3-Check yourself for ticks

- Shower after being outdoors
- Check at least once a day
- Remove ticks ASAP!



Be Aware of your Surroundings

- Always wear a properly fitting bike helmet as most serious injuries are to the head.
- Be sure your handlebars, seat and wheels fit snugly.
- Keep your bike in good shape by checking and oiling your chain, making sure your brakes work properly and maintaining your tire pressure.
- Always ride with both hands on the handlebars except when doing turn signals.
- When leaving a driveway, curb or alleyway always stop and check for traffic in both directions.
- Cross only at intersections.
- Use the crosswalk to walk your bike across busy intersections and follow the traffic signals.
- Never ride against traffic. Travel in the same direction as the cars.
- Whenever you can, use bike routes and avoid busy streets.
- Don't ride near parked cars as doors can open and cause accidents.
- Obey all traffic signs and traffic lights.
- When biking with friends, ride in a single file.
- Always pass other bikers or pedestrians on the left and say "On your left!" to make your presence known.
- Always use bicycle hand signals to alert traffic of your changing direction.



Drink lots of Water!



Know Your ATV

Read the owner's manual

and know your vehicle thoroughly.

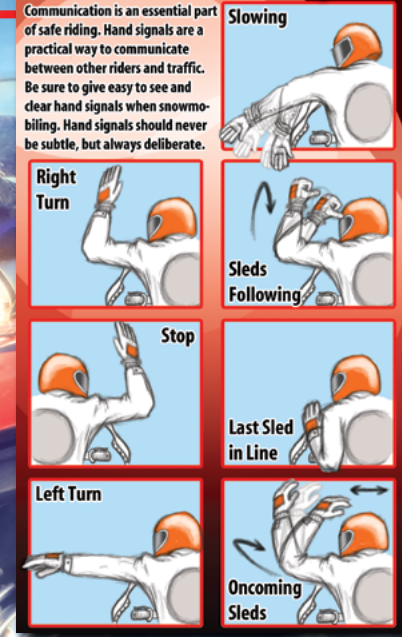
- Check your vehicle before you ride.
- Wear protective equipment and clothing.
- Don't lend your vehicle to unskilled riders.
- Supervise young or inexperienced riders.
- Never carry a passenger on vehicles meant for one rider.
- Do not operate under the influence of drugs or alcohol.
- Drive at speeds that are appropriate to trail conditions.
- Stay to the right on trails.
- Stay away from thin ice, open water and wetlands.
- Know the weather forecast.
- Make sure headlights and taillights work properly.
- Maintain safe distances between other riders.
- Reduce your speed when riding at night.
- Yield to other motor vehicles and trail users.
- Young or beginning riders are encouraged to take a safety training course.

SNOWMOBILE SAFETY

- Do not consume alcohol or take drugs prior to or during your snowmobile trip. Doing so increases your chances of injury or death.
- Slow down and don't cut to the inside of the trail corners. It's dangerous and illegal.
- If you snowmobile at night, don't override your lights.
- Always use the buddy system. Never ride off alone.
- Drowning is one of the causes of many snowmobile fatalities. Whenever possible, avoid the ice.
- Wear sensible, protective clothing designed for operating a snowmobile.
- Use a full size helmet, goggles, or visor to prevent injuries from twigs, stones, ice chips and other debris.
- Avoid wearing long scarves. They may get caught in moving parts of the snowmobile.
- Know the terrain you are going to ride. If unfamiliar to you, ask someone who has traveled over it before.
- Know the weather forecast, especially the ice and snow conditions.
- Be sure your snowmobile is in top-notch mechanical condition throughout the months of use.
- Familiarize yourself with the snowmobile you are driving. Thoroughly read the manual that accompanies the snowmobile.
- Do not pursue domestic or wild animals. That is not the conduct of a sportsman. Report such violations to the nearest law enforcement officer.

Snowmobile Hand Signals

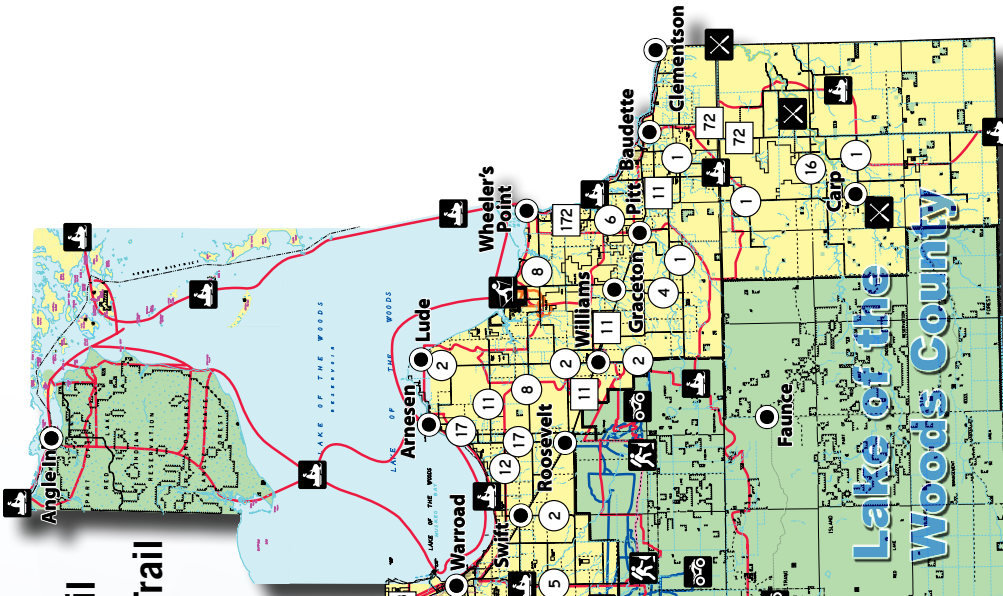
Communication is an essential part of safe riding. Hand signals are a practical way to communicate between other riders and traffic. Be sure to give easy to see and clear hand signals when snowmobiling. Hand signals should never be subtle, but always deliberate.



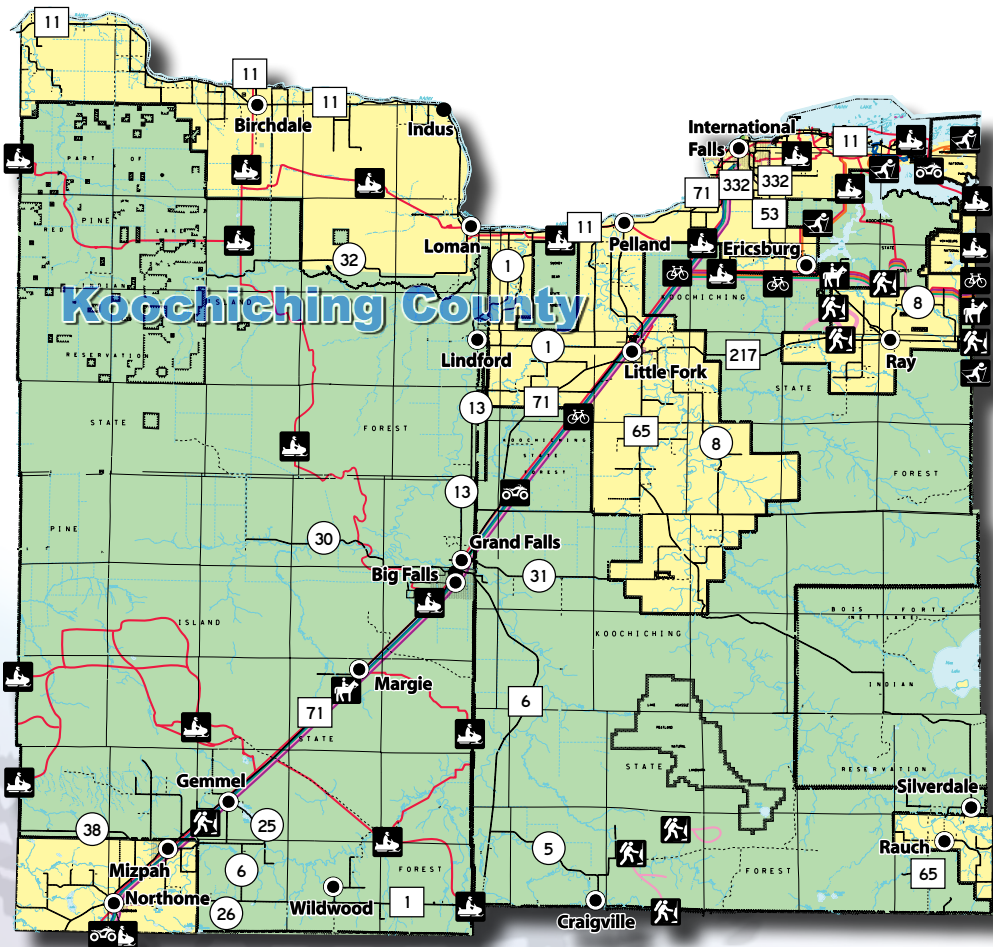
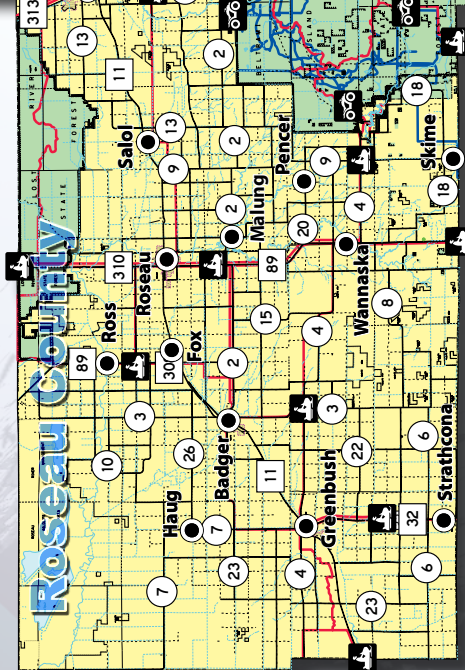
PRIVATE PROPERTY
NO TRESPASSING

Please respect private property and no trespassing signs. Stay on trails. Exercise extreme caution on all lakes and streams. Obey all state and local laws and ordinances. Do not operate snowmobiles/ATVs on county roads or state highways.


LOCAL AREA TRAILS



-  Snowmobile Trail
-  ATV Trail
-  Bicycle Trail/Route
-  Equestrian Trail
-  Hiking/Walking Trail
-  Cross-Country Ski Trail
-  Paddle Boat Trail



Disc golf or frisbee golf is played a lot like traditional ball golf but instead of hitting a ball with a club into a hole the player throws a frisbee into a basket. Disc golf can be played by just about anyone at any age. It's also a cheap sport to get into. Specialized frisbees for disc golf cost around \$10-\$15 and a lot of courses are free. Playing disc golf is a great way to get out for some exercise, enjoy nature and have some fun.



Disc Golf



Barbecue

BARBECUE DO'S:

- use proper barbecue equipment and tools, such as a grill, tongs, and spatulas.
- preheat your grill before placing any food on it.
- marinate your meat before cooking to enhance the flavor.
- keep a close eye on your food while grilling to prevent overcooking or burning.
- use a meat thermometer to ensure that your meat is cooked to the correct internal temperature.
- let your meat rest for a few minutes before slicing or serving to allow the juices to redistribute.
- keep your grill and utensils clean to prevent any foodborne illness.

BARBECUE DON'TS:

- use lighter fluid to start your grill. Instead, use a chimney starter or electric starter.
- overcrowd your grill. Leave enough space between the pieces of meat to ensure even cooking.
- use a fork to flip your meat. Piercing the meat can cause it to lose its juices and become dry.
- baste your meat with sugary sauces too early in the cooking process, as it can burn and create a bitter taste.
- leave cooked meat out in the sun for too long, as it can spoil quickly.
- assume that meat is fully cooked by its color. Always use a meat thermometer to check the internal temperature.
- leave your grill unattended while it's still hot. Always make sure to properly cool it down before leaving it.



BUTTERED-UP

Steak



Simple meal with a Gourmet Feel

INSTRUCTIONS

- 1 Take the steaks out of the refrigerator and let them come to room temperature for about 30 minutes. This helps the steak cook more evenly.
- 2 Preheat your oven to 400°F.
- 3 Season the steaks generously with salt and pepper on both sides.
- 4 Heat a large skillet over high heat until very hot. Add the steaks and cook for about 2-3 minutes per side, until nicely browned.
- 5 Remove the steaks from the skillet and place them on a baking sheet.
- 6 In the same skillet, add the butter and garlic. Cook for about 30 seconds, stirring constantly, until the garlic is fragrant.
- 7 Pour the garlic butter over the steaks on the baking sheet.
- 8 Place the baking sheet in the oven and cook for about 5-7 minutes for medium-rare doneness, or longer if you prefer your steak more well-done.
- 9 Remove the steaks from the oven and let them rest for a few minutes before slicing.
- 10 Serve the steak with any remaining butter from the baking sheet and fresh herbs if desired.

INGREDIENTS

2 steaks (ribeye or sirloin are good choices)

Salt and pepper

2 tablespoons unsalted butter

2 cloves garlic, minced

Fresh herbs (optional)

Enjoy your delicious buttered-up steak!

PREP: 35 MIN • TOTAL: 50 MIN

So, You have decided to get a pet... NOW WHAT??

Commitment and Time: Owning a pet is a long-term commitment. Before bringing a pet home, consider your lifestyle and ensure you have enough time to spend with your pet. Dogs, cats, and many other animals require attention, exercise, and mental stimulation.

Choose the Right Pet for Your Lifestyle: Different pets have varying needs, temperaments, and activity levels. Research and select a pet that fits well with your lifestyle, living situation, and family dynamics. Whether you choose a dog, cat, bird, fish, or any other animal, make sure you can provide for its specific needs.

Proper Nutrition: Feed your pet a balanced and nutritious diet suitable for their species and age. Consult with a veterinarian to determine the best food options for your pet's health and well-being.

Regular Exercise: Most pets need regular physical activity to stay healthy and happy. Engage in playtime and exercise with your pet daily, as it helps prevent obesity and provides mental stimulation.

Routine Veterinary Care: Schedule regular check-ups with a veterinarian to monitor your pet's health, get necessary vaccinations, and address any concerns. Early detection of health issues can often lead to better outcomes.

Spaying/Neutering: Consider spaying or neutering your pet if you don't plan on breeding. This helps control the pet population and can have health benefits for your pet.

Training and Socialization: Properly train your pet to follow basic commands and have good manners. Socialize them with other animals and people from a young age to prevent behavioral issues later on.

Provide a Safe Environment: Ensure that your home and yard are safe for your pet. Remove hazards, keep toxic substances out of reach, and provide appropriate shelter from extreme weather conditions.

Grooming: Regular grooming is essential for most pets. Brush their fur, trim nails, and clean their ears as needed to keep them comfortable and healthy.

Identification and Microchipping: Keep identification tags with your current contact information on your pet's collar. Consider microchipping your pet as an extra measure to ensure they can be identified if lost.

Love and Attention: Pets thrive on love and attention from their owners. Spend quality time with your pet, provide affection, and build a strong bond.

Respect and Understanding: Learn to understand your pet's body language and behavior. Respect their boundaries and feelings, and avoid forcing them into uncomfortable situations.



Patience and Forgiveness: Pets, especially young ones, can be mischievous or have accidents. Be patient with them during the training process and forgive any mistakes they make along the way.

Emergency Preparedness: Have a plan in place for emergencies, including natural disasters. Know how to evacuate with your pet safely if needed.

If you have just rescued / adopted a new fur baby, please it is important to remember the 3-3-3 RULE:

3 Days:

In the first 3 days being in its new home, they will be feeling overwhelmed, scared & unsure of what is going on. They may also be uncomfortable being "themselves", and may not want to eat or drink. They may want to "shut down" or hide under a bed or in a crate, and they will test boundaries.

3 Weeks:

At this point, they may be a lot more comfortable & settling in. Learning a new routine can be overwhelming, so please be patient. By now they may have figured out the new environment & accepted that this may be their FURever home. Their personality traits will start to show, as well as any behavior issue that may be present.

3 Months:

For most fur babies, 3 months is enough time to finally be comfortable and begin to build trust and a true bond. A sense of security may be present & a set routine will help this process.

Please know that this is not the rule with every rescued or adopted pet, as some may need 6 months to a year to adjust & adapt, depending on MANY factors. Age of animal, what type of an environment did they come from?

ALLISON PARK

Lake St. NE | Warroad

HAYES LAKE STATE PARK

48990 Co. Rd. 4 | Roseau | (218) 425-7504

WARROAD CITY PARK

1101 Lake St. NE | Warroad

| (218) 386-1004

ZIPPEL BAY STATE PARK

3684 54th Ave. NW |

Williams

DOG FRIENDLY PARKS



Furnace Maintenance

If there is a smell of gas in your home, do not shut the gas off or use any lights. Get out of the house and leave the door open. Once a safe distance from the house call the gas company or the fire department. Do not reenter until you have a confirmation from the gas company or the fire departments that it's safe.

It is important to maintain all furnace types. Without any maintenance the furnace will have a shorter life span and may cause harm to you or your household by emitting carbon monoxide, causing a fire or breaking down. You should check your furnace at least once a year or hire a professional to do it.

For a gas furnace start by turning off the power and gas to the furnace and removing the combustion chamber door. Clean the combustion chamber with a soft wire brush and a vacuum. Inspect the combustion chamber for any corrosion. If the combustion chamber is clean and in good condition turn the power and gas back on and check the burner flames to make sure they are burning fairly even and blue. If the burners are not working correctly call a professional to adjust them.

Inspect the flue pipe to make sure there is no corrosion or any holes. For small holes you can use some foil tape to patch them. If there are bigger holes or signs of corrosion you will need to replace that section of flue pipe.

Change the furnace filters. The packaging on the filter should have a rough estimate of the filters life but the filters should be changed at least once a year. Next to the filters should be the blower chamber. It is a good idea to vacuum and clean the inside of this area as well to help lengthen the life of the filters.

Clean the floor ducts with a vacuum. This will help the furnace be more efficient and also reduce the amount of airborne particles and dust.

Shop • Dine
Play • Stay

LOCALLY



...and
support the
community you live in!