

Free Local Area GUIDE

Iron Range
w/ Itasca &
St. Louis
Counties, MN

LincolnMarketing
www.lincolnmktg.com

Scan the QR Code
for a Digital Copy



ALL INSURANCE COMPANIES ACCEPTED



**WE INSTALL
STEEL & ALUMINUM**

DOORS

- **COMMERCIAL DOORS, FRAMES & WINDOWS
DOOR HARDWARE & ADA COMPLIANT**
- **AUTOMATIC DOOR OPENERS**
- **AUTOMOTIVE GLASS REPAIR & REPLACEMENT**
- **RESIDENTIAL WINDOW GLASS REPLACEMENT**
- **CUSTOM SHOWER GLASS, MIRRORS & PLEXIGLASS**



**ARROW AUTO
GLASS & DOOR**

218-741-2993

OWNERS Jerry Stimac & Jeff Stimac



411 N 1ST ST
VIRGINIA

HOME | AUTO | COMMERCIAL

arrowautosupply.com





ARDENT BICYCLES
ESTD 2019

GUIDE SERVICES
MAINTENANCE
REPAIRS
RENTALS

BIKES, SKIS, + OUTDOOR GEAR

(218) 999-5470
ardentbicycles.com
riding@ardentbicycles.com

Monday - Saturday
9:00am - 6:00pm



301 NW 1st Avenue • Grand Rapids, MN 





MEAT Me
UP North
VIRGINIA, MN

Fresh Butcher Shop Meats



Fresh Produce



Expanded Grocery Section



(218) 749-1330 • fdmeats.com
1108 8th St. South • Virginia, MN 55792

NOW HIRING

CHESTNUT COLLISION



**Collision Repair Technician or
Combination Technician**

QUALIFICATIONS

- Professional Experience a Must
- Schooling a Plus

**Competitive Pay Depending on
Experience or Education**

Submit Resume to Chestnut Collision:
105 Chestnut St. • Virginia, MN • 218-741-3061

Quality Roofing & Siding For Less!



LIC# BC704141



- Hail & Storm Damage Specialists
- Shingle, Flat & Metal Roofing
- Licensed & Insured
- Lifetime LP, Steel & Vinyl Siding
- Residential & Commercial
- Lifetime Soffit & Fascia
- Free Estimates & Reference List
- Seamless Aluminum Gutters

www.MillersRoofing.net

218-969-0606

DINING, DRINKS & COMPANY



Copper Nickel

PUBLIC HOUSE

TWO GREAT LOCATIONS



VIRGINIA GOLF COURSE
1308 18TH STREET NORTH
VIRGINIA, MN 55792
218-748-7534



111 MAIN STREET NORTH
AURORA, MN 55705
218-306-6149

Full Service Restaurant & Bar

Open Everyday @ 11:00 am

Open @ 8:00 am for Breakfast in Virginia on Saturday & Sunday

House Made Soup, Salad, Pasta, Burgers, Sandwiches, Steaks, Seafood

Chef-Curated Specials Daily

Thursday - Fall off the Bone BBQ Pork Ribs

Friday - Walleye, Pollock, Tilapia, Cod, Rock Fish, & Shrimp Fish Fry

Saturday - Prime Rib & Shrimp

Gluten-Free & Vegetarian Options Available

TABLE OF CONTENTS

- 2-3 Local Area Events
- 4 Residential Services
- 6 Iron Range History
- 7-11 Iron Range Communities
- 14-15 Parks & Recreation
- 16-17 Local Area Attractions
- 18-19 Hunting Seasons
- 20-23 DNR License Centers
- 24 Fishing Seasons
- 30-31 Area Trails



Itasca County

St. Louis County

Scan the QR Codes to go to the individual county page.



This free publication is made possible by the advertisers and other local agencies and may not be reproduced. Please support the local advertisers on this publication. Comments and/or suggestions may be directed to: info@lincolnmarketing.us

View this publication online at www.lincolnmarketing.us

Local Area EVENTS



JANUARY

UNS Annual Ice Fishing Contest | Duluth
First Day Hike | Duluth
Twin Ports Great Medallion Hunt | Duluth
Nordic Auction (Every Thursday) | Duluth
MacRostie Art Center First Friday (Year Round) | Grand Rapids

FEBRUARY

Ely ArtWalk
Ely Winter Festival
WolfTrack Classic Sled Dog Race | Ely
Boat, Sports, Travel and RV Show | Duluth
Yeti Tour | Duluth
Polar Plunge | Duluth
American Birkebeiner | Duluth
Jacobson Classic Snowmobile Ride | Grand Rapids
Grand Rapids Area Boat Show
Fat Forest Fourteen (Fat Tire Bike Race) | Grand Rapids
Star of the North Hockey Tournament | Grand Rapids

Polar Bear Plunge | Grand Rapids
Home and Cabin Show | Grand Rapids

APRIL

Arrowhead Home & Builders Show | Duluth
Homegrown Music Festival (April-May) | Duluth
Easter Egg Hunt | Throughout Iron Range
Last Chance Bonspiel | Hibbing
Junk Hunt | Duluth
AMSOIL® Duluth National Snocross

MAY

Memorial Day Parade | Duluth
Magic Smelt Parade | Duluth
Dylan Days | Duluth
Bike Swap with Continental Ski & Bike | Duluth
City Wide Rummage & Business Crazy Day Sale | Ely
Grand Rapids Farmer's Market (May-Oct, Weds & Sats)

JUNE

Grandma's Marathon | Duluth
Park Point Art Fair | Duluth
Park Point Rummage Sale | Duluth
CHUM Rhubarb Festival | Duluth
Bigfork Wilderness Days
Judy Garland Festival | Grand Rapids
Round Robin Canoe Race | Grand Rapids
National Trails Day | Park Rapids
Shifters Car Show | Hibbing
Land of the Loon Ethnic Arts & Crafts Festival | Virginia
Midsummer Benefit (June 4th) | Tower
Midsummer 2025 Gala (June 14th) | Tower

JULY

Downtown Duluth Sidewalk Days
Duluth Airshow
Forth Fest | Duluth
Bayfront Country Jam | Duluth

Bayfront Reggae & World Music Fest | Duluth
All Pints North Summer Brew Fest | Duluth
Blueberry Art Festival | Ely
Two-Town Ten Trillion | Nashwauk
Deer River Wild Rice Festival
Northstar Stampede Rodeo | Effie
South St. Louis County Fair | Proctor
St. Louis County Fair (July-Aug) | Hibbing



Hibbing Jubilee
Downtown Art Fair @ MacRostie | Grand Rapids
4th of July Parade | Nashwauk, Keewatin, Grand Rapids
Timberman Triathlon | Grand Rapids
Car Show and Swap Meet | Grand Rapids
Taste of Duluth

AUGUST

Finn Fest in Duluth
Brewhouse Triathlon | Duluth
Northshore Dragon Boat Festival | Duluth
Spirit Valley Days | Duluth
Bayfront Blues Festival | Duluth
City On the Hill Music Festival | Duluth
Boundary Waters Blues Festival | Ely
Ely Watercross
Tall Timber Days | Grand Rapids
Itasca County Fair | Grand Rapids
Family Music Festival | Lake Itasca
Hoghead Festival | Proctor
Mines and Pines | Hibbing
Ely Loony Days
Art in Bayfront Park | Duluth
Duluth-Superior Pride

SEPTEMBER

Grandma's Oktoberfest Celebration | Duluth
NorthShore Inline Marathon | Duluth
Hawk Weekend Festival | Duluth
Tour of Historic Places | Duluth
Duluth Rising Festival
Harvest Moon Festival | Ely
Ely Marathon
Bovey Farmer's Days
Grand Rapids Riverfest

OCTOBER

Halloween Trick-or-Treat | Throughout Iron Range
Boo at the Zoo | Duluth
Haunted Ship | Duluth
Jake Forsman Memorial Car Show & Burnout Competition | Ely
Beer Tasting Train | Duluth
Grand Traverse | Duluth
Trolley in the Dark | Duluth

NOVEMBER

Deer River Winter Fest (Nov-Dec)
Bentleyville Tour of Lights (Nov-Dec) | Duluth
Holiday Spirit of the Lights (Nov-Jan, Fri & Sat) | Duluth
Gales of November | Duluth
Gobble Gallop Race | Duluth
The Polar Express Train Ride (Nov-Dec) | Duluth
Christmas City of the North Parade | Duluth
Grand Rapids Winter Farmers Market (Nov-April, 3rd Sats)
Lights in the Pines | Grand Rapids
Glensheen Christmas Candlelight Tours (Nov-Dec, Fri & Sat) | Duluth

DECEMBER

Arrowhead Ice Fishing and Winter Show | Duluth
New Year's Eve Bash | Duluth

** Events are subject to change **

** For more MN events visit www.exploreminnesota.com*



MARCH

House of Hearts Charity Bonspiel | Duluth
John Beargrease Sled Dog Marathon | Duluth
SMASH - Spirit Mountains Annual Spring Happening | Duluth
Ely Film Festival
Jaycee's Home, Sport & Travel Show | Grand Rapids

RESIDENTIAL SERVICES

ITASCA COUNTY

Administration	(218) 327-7363
Assessor	327-2861
Attorney	327-2867
Auditor/Treasurer.....	327-2860
Court Administration	327-2870
Emergency.....	911
Environmental Services & Zoning.....	327-2857
Extension Service	327-7486
Health & Human Services	327-2941
Land & Parks Department	327-2855
Probation/Parole	327-2869
Recorder	327-2856
Sheriff	326-3477
Surveying & Mapping.....	327-2854
Transportation & Highway	327-2853
Veterans Services	327-2858

ST. LOUIS COUNTY

St. Louis County General Information	(218) 726-2000
Administration.....	726-2450
Assessor ~ Duluth Office.....	726-2304
Ely Office.....	365-8236
Hibbing Office.....	312-8389
Virginia Office.....	471-7147
Attorney.....	726-2323
Auditor.....	726-2383
Environmental Services	749-9703
Emergency.....	911
Extension	733-2870
Information Technology.....	726-2047
Land & Minerals.....	726-2606
Law Library	726-2611
Planning & Zoning	471-7103
Property Management.....	725-5085
Public Health & Human Services	726-2000
Public Works	625-3830
Purchasing	726-2666
Recorder.....	726-2677
Sheriff	726-2340
Veteran Services	725-5285

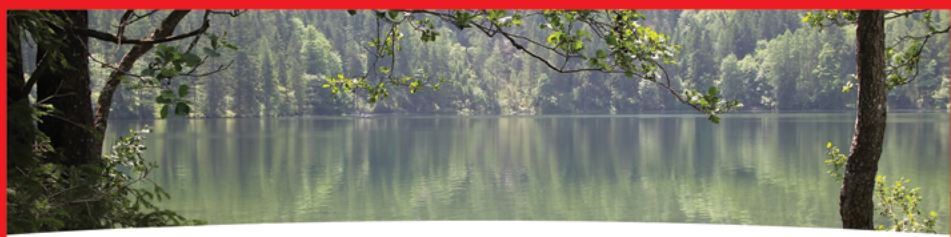


MICHELLE MANICK
SALES ASSOCIATE

O: 218-666-6021
C: 218-780-5200
MGMANICK@YAHOO.COM
THEHALCYONREALESTATE.COM



Housing and Redevelopment Authority of Ely MN



Pioneer Apartments
114 N 8th Ave E • Ely

Zenith Apartments
965 E Camp • Ely

Sibley Manor
210 W White • Ely

Vermillion Homes
2 - 4 Bedroom Family Units

Northwoods Townhomes
1 - 2 Bedroom Market Rate

Ely
(218) 365-3900

www.elyhra.com



Iron Range Communities

TOWER – pop. 477
VIRGINIA – pop. 8,480
WARBA – pop. 176

**Populations are approximate.*

BIGFORK – pop. 443
BOVEY – pop. 665
CALUMET – pop. 355
COHASSET – pop. 2,541
CHISHOLM – pop. 4,594
COLERAINE – pop. 1,008
COOK – pop. 574
DEER RIVER – pop. 918
DULUTH (county seat) – pop. 84,284
EFFIE – pop. 85

ELY – pop. 3,473
EVELETH – pop. 3,582
GRAND RAPIDS (county seat) – pop. 8,743
HIBBING – pop. 16,209
KEEWATIN – pop. 1,070
LAPRAIRIE – pop. 593
MARBLE – pop. 672
NASHWAUK – pop. 915
SQUAW LAKE – pop. 94
TACONITE – pop. 293

BIGFORK

Loggers, fur traders and trappers were the first to develop the area known as Bigfork. The first settler, Damase Neveau, claimed land and built a log cabin near the Big Fork River in 1892. As a result, the community was named after the Big Fork River. The first post office was established in 1902 and incorporation followed in 1907. Today Bigfork is home to approximately 443 residents.

BOVEY

Located in Arbo Township, Bovey was developed as a logging site and many locals were involved in the mining industry. Erick Johnson opened the first store in 1903. A year later he established the post office and the community was platted on 40 acres of forested land. Incorporation soon followed. Today Bovey is home to approximately 665 residents.

CALUMET

Calumet was first settled by loggers and miners in 1880. The area was named after Indian peace pipes. As the Hill Mine was established, Calumet became an official community. A general store, hardware store, blacksmith shop, women's clothing store, cigar factory, butcher shop, ice house, livery barn, public sauna and 14 saloons were opened by 1900. In 1908 a post office was established and Calumet was incorporated in 1909. Today Calumet is home to approximately 355 residents.

CHISHOLM

Originally called "Meebeega" meaning "Rough Earth" by the Chippewa Indians, Chisholm was first explored by E.J. Longyear in 1892. Located in the heart of the Iron Range, Chisholm was platted and incorporated as a village in 1901. Due to the high amount of mining work and close proximity to the railroad, Chisholm grew dramatically. There were over 6,000 residents and over 500 buildings by 1908 until a forest fire destroyed the town. Building codes were improved and within a year, over 70 fireproof buildings had been constructed. In 1934 Chisholm became a city and residents continue to celebrate Chisholm Fire Days in celebration of their perseverance. Today Chisholm is home to approximately 4,594 residents.



Iron Range History

ITASCA COUNTY

Itasca County was originally inhabited by Indians and later fur trappers, until loggers were attracted to the white pines in the area in 1829. By 1872, over 17 lumber camps had been established and more followed. As lumbermen needed supplies, stopping places such as Grand Rapids were built throughout the area which often included a hotel, saloon, general store and warehouse. In 1874 a post office was established in Grand Rapids by Lowe Seavey and by 1880, the Iron Range was full of loggers. Settlers began arriving and a school house was built in 1887 in Grand Rapids. In 1890 the Winnipeg Railroad line reached the Grand Rapids area and roads were improved, causing the county to boom. After incorporation in 1891, Grand Rapids successfully battled LaPrairie for the county seat. By 1900 Itasca County had a population of 4,573. Today Itasca County is home to approximately 44,512 residents.

ST. LOUIS COUNTY

St. Louis County is the second largest county in the United States, spanning over 6,000 square miles of picturesque wilderness and over 500 lakes. Its county seat is Duluth. Dakota and Chippewa Indians occupied St. Louis County area until French fur traders and missionaries arrived. Daniel Duluth, a soldier and explorer from France, is believed to have established one of the first trading posts on the shores of Lake Superior in the 1600s. Once known as part of Superior County, St. Louis County was established in 1855 and is named after the St. Louis River. By 1900 St. Louis County had a population of 82,932. With the discovery of iron ore, St. Louis County forms part of the Iron Range where taconite mining continues today and is home to the fastest and largest lift bridge in the world, allowing ships to pass through the canals of Lake Superior. Visitors can also enjoy many recreational activities as the Superior National Forest, Voyageurs National Park and the Boundary Waters Canoe Area Wilderness are located here. Today St. Louis County is home to approximately 196,864 residents.

Iron Range Communities

COHASSET

Located in Bass Brook Township, Cohasset was named after an Indian word for pine trees. In 1892 a post office was established and the community was incorporated in 1902. Minnesota Power, one of Minnesota's largest electrical production operations, is located here. Today Cohasset is home to approximately 2,541 residents.

COLERAINE

Settled by miners and loggers, Coleraine was named after Thomas F. Cole, a prominent figure in the northern iron mines. The community was developed in 1904 by John Campbell Greenway as an Oliver Mining town. In 1906 a post office was established and by 1909 Coleraine was incorporated. Today Coleraine is home to approximately 1,008 residents.

COOK

Cook was initially known as Ashawa, which stands for "by the river or across the river". The city's name was changed to Cook on August 1, 1908; at the request of the U.S. Postal Service "because confusion with a village in southern Minnesota named Oshawa". The town was named in honor of Wirth Cook, an owner of the railroad that was constructed through the area in 1903 and 1904. Cook was incorporated on May 13, 1926. Today Cook is home to approximately 574 residents.

DEER RIVER

Settled by fur traders and loggers, Deer River was established in 1894. As the community developed, Deer River was known as a booming lumberjack town. With the arrival of the railroad in 1898, the population dramatically increased. Roads, sidewalks and businesses were then built to accommodate the growing needs of the community. Today Deer River is home to approximately 918 residents.

DULUTH (COUNTY SEAT)

Duluth was originally occupied by Dakota and Chippewa Indians. French explorers arrived in the 1600s and began trapping and trading fur. Daniel Duluth was sent by the French to settle disputes between the tribes and to progress the fur trading industry, thus the area came to be known as Duluth. Upon settlement, Duluth was the only port in the United States with access to the Atlantic and Pacific Oceans where lumber, wheat and iron ore were shipped. The arrival of the railroad furthered its progress. Duluth was soon the fastest growing and largest city in the United States until a stock market crash in 1873. With the abundance of natural resources, Duluth recovered and is the largest city on the North Shore. Today Duluth is home to approximately 84,284 residents.

EFFIE

As the Minneapolis and Rainy River Railway arrived to the area, development in Effie began. The first post office was established by Eva R. Wenaus in 1903 and named the community after her daughter, Effie Wenaus. Today Effie is home to approximately 85 residents.

ELY

Occupied by the Chippewa Indians, Ely was explored by French fur traders. As prospectors arrived in search of gold, rich iron ore deposits were discovered here in 1883. On the shores of Shagawa Lake a mining village was established called "Florence." As more iron deposits were discovered west, the settlement moved and was renamed "Ely" after Samuel Ely, a miner from Michigan. The shipment of iron ore began in 1888 and sawmills and logging industries were established to meet the growing needs of the mines. As the industries in Ely began to boom, the railroad was extended to simplify the transport of goods. As of 1916 Ely was a widely known tourist attraction. Today Ely is home to approximately 3,473 residents.

EVELETH

Eveleth was platted in 1892 and is named after Erwin Eveleth. Eveleth was a timber cruiser sent from Michigan to purchase the local pinelands. As iron ore was discovered in 1895, the town relocated closer to the mineral deposits and in 1902 Eveleth was incorporated as a city. Mining continues to be the leading industry. Eveleth is known as the hockey capital of Minnesota, home to the world's largest hockey stick. Today Eveleth is home to approximately 3,582 residents.

GRAND RAPIDS (COUNTY SEAT)

Logging camps and trading posts were the first buildings in the area known as Grand Rapids. In 1872 the Potter Company General Store was built and the post office was established in 1874. Named after the Mississippi rapids, Grand Rapids was first incorporated as a village in 1891. A year later the community successfully battled LaPrairie for the county seat. In 1957 Grand Rapids was incorporated as a city. The Blandin Paper Company, internationally recognized for making the lightest weight coated paper ever produced, is located here. Today Grand Rapids is home to approximately 8,743 residents.

HIBBING

Hibbing was established in 1893 by Frank Hibbing, a German miner who discovered iron ore in the area and the area was once known as the "Iron Capitol of the World." When a large deposit of ore was found two miles south in the 1920s, Hibbing moved to its present location. Over 20 businesses and 180 houses were moved by logs and steel wheels at the cost of \$16 million, taking several years to complete. The remains of buildings at the old location can still be found. Hibbing is widely known for its famous former residents, most notably, Bob Dylan. Today Hibbing is home to approximately 16,209 residents.



Iron Range Communities

KEEWATIN

In 1904 large deposits of iron ore were discovered and settlement of Keewatin began. The area is named after an Indian word meaning “north wind.” As a slow growing community, development in Keewatin did not begin until the Great Northern Railroad arrived in 1909. Today Keewatin is home to approximately 1,070 residents.

LA PRAIRIE

Located in Grand Rapids Township, LaPrairie developed as a logging community. The area was first known as Neal’s Landing after Neal Carr, changed to Nealsville, renamed Saginaw and finally deemed LaPrairie. In 1890 the railroad arrived, the first post office was established and LaPrairie was incorporated. Today LaPrairie is home to approximately 593 residents.

MARBLE

Albert F. Gross built the first homestead in the area known as Marble in 1888, who founded the Gross-Marble Mining Company. The community was then platted by the Oliver Mining Company in 1908 and the post office was soon established. Today Marble is home to approximately 672 residents.

NASHWAUK

The first mining community in Iron Range, Nashwauk was platted in 1902 with incorporation soon following. As the community developed, many families began to arrive and the population of Nashwauk grew dramatically from 220 in 1902 to 2,080 in 1920. Today Nashwauk is home to approximately 915 residents.

SQUAW LAKE

Located in Max Township, Squaw Lake was developed as a trade center on the Great Northern Railway. The first post office was established in 1923 and Squaw Lake was incorporated in 1940. Today Squaw Lake is home to approximately 94 residents.

TACONITE

Taconite was platted by the Oliver Mining Company and is the location of the earliest iron mining experimentation. The first post office was established in 1906 and the community was incorporated in 1909. Today Taconite is home to approximately 293 residents.

TOWER

Incorporated in 1889, Tower is the oldest city north of Duluth. It is located near the southern shores of Lake Vermillion. While looking for gold, prospectors discovered hematite with rich deposits of iron in the area. The Soudan Mine, an underground mine, was established and Tower began to thrive. Today Tower is home to approximately 477 residents.



VIRGINIA

Virginia was originally called “Qeechaquepagem” or “lake of the north birds” by the Cherokee tribe. In 1890 the first settlers arrived hoping to find gold. Instead, large iron deposits were discovered and the town was incorporated in 1892. After twice being destroyed by fire, all buildings in Virginia were required to be brick, concrete or stone in 1900. Virginia Rainy Lake Lumber was built in 1909 and was the largest white pine mill worldwide. Today Virginia is home to approximately 8,480 residents.

WARBA

Developed as a logging community, Warba is named after an Indian word “Waiba” meaning “white swan” or “resting place.” Located in Feeley Township, Warba’s first post office was established in 1901 and platted in 1904 by Thomas J. Feeley. Today Warba is home to approximately 176 residents.

NATURAL HARVEST
Locally owned, organically grown. **FOOD CO-OP**

GROCERY + DELI
WELLNESS + BULK

Located on Silver Lake & the Mesabi Trail!
732 4th St. N Virginia, MN 55792

Monday - Friday: 8:00 AM - 8:00 PM
Weekends: 9:00 AM - 7:00 PM

218.741.4663 • naturalharvest.coop



Hillcrest is committed to providing senior housing with services of the highest quality that are tailored to meet the individual needs of each resident.

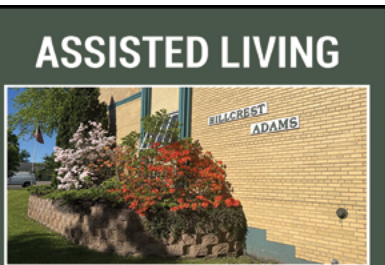
Available Services & Amenities

- Private Rooms
- Three Daily Meals
- Registered Nurse on Staff
- Licensed Practical Nurse on Staff
 - Medication Dispensing
 - Laundry Services
- Assistance with Transportation Arrangements
 - Housekeeping
- Beauty/Barber Shop on Site
- Individualized Services Available

MEMORY CARE



Chestnut Grove
1204 Chestnut Street
Virginia, MN (218) 749-6846



Hillcrest Adams
2229 Third Avenue East
Hibbing, MN (218) 263-4157



Hillcrest Nashwauk
570 Platt Avenue East
Nashwauk, MN (218) 885-1213



Hillcrest Suites
1520 East Hwy 37
Hibbing, MN (218) 263-3641



Hillcrest Terrace
1507 East 41st Street
Hibbing, MN (218) 263-3641



Serving Hart
601 E Lake Street
Chisholm, MN (218) 254-7300

ASSISTED LIVING

Tucked away in the “Edge of the Wilderness” in Bigfork, MN, you will find The Edge Center for the Arts. The Edge is a place to experience art and culture within a small-town community. In 1992, the Edge of the Wilderness Community Center was formed as a nonprofit organization. In 2005, The Edge Center for the Arts, attached to Bigfork School, was constructed. Kevin Kling’s Freezing Paradise, a professional tour from the Guthrie Lab, was the first event on our stage. The Music Man, a story of bringing music to a small Midwestern town, presented by the EdgeWild Players was next. The first Gallery season presented seven exhibits which included student work, local paintings, sculptures, and quilts. “The rest is history!”

With support from donors and grants, we have welcomed friends, old and new, from near and far, to seasons of music, art, dance, classic movies, and theatre ever since. This year, the Edge turns TWENTY! The Edge is continually developing as a community center for the arts. We foster community theatre through our own EdgeWild Players and their productions. We offer a newly up-graded, well-equipped theatre, training in theatre technology, and workshops with visiting artists to Bigfork students. We collaborate with the Bigfork Area AGE to age Initiative which brings generations together and connects young people with older adults to build friendship and community.

This year both our audiences and our production teams will enjoy much-needed updates to our lighting and sound systems. The new LED lighting allows for stunning and easily created stage effects. Our new sound equipment will be ready to knock your socks off before our first event in May. There will even be a real movie screen and new projector! These are major technical improvements thanks to grants we received from the Blandin Foundation, Minnesota Power & Light, and an anonymous donor.

The Edge Center for the Arts is a volunteer-run organization with a single part-time employee. Dedicated volunteers have kept the Edge flourishing. Each year we bring a full season of opportunities to participate in the arts as well as to observe and appreciate them. We are a community center for the arts centering community in the arts. It is a rare gem in a town that is surrounded by wilderness and outdoor recreation.

Our 2025 season runs from April-December and will include many “wildly unexpected” things. The art gallery will present wildlife photography, student work, Native fashion, and a nature journaling workshop hosted by Nelia Harper. Our events committee will host Stages Theatre Company and their production of Madagascar - A Musical Adventure, Ragamala Dance Company and much more!

Every season at the Edge is vastly different, so it’s best to stay informed. We post regular updates on our Facebook where you can like our page and follow us. You can learn more and sign up

for our monthly newsletter at edgecenterarts.org. We can’t wait to share our space with you!



Center for the Arts

Wildly Unexpected!



ALDER POND TRAIL

Grand Rapids
Located on 6 miles of aspen and hardwood forest, the Alder Pond Trail was developed as hunting trails and is open for hiking, biking and cross-country skiing. Located east of Grand Rapids.

AMEN LAKE TRAIL

Deer River
Located on 4.5 miles of the Chippewa National Forest, the Amen Lake Trail is open for hiking, biking and cross-country skiing. Located south of Amen Lake and west of Long Lake.

BASS LAKE COUNTY PARK & CAMPGROUND

Bass Lake Campground Rd. | Effie
Located on 663 acres of spruce, aspen, cedar and red and white pines, Bass Lake County Park features multi use trails for hiking, horseback riding and biking. Facilities include 29 camp sites and five tent sites with picnic tables, fire grates, tent pad and/or camper slots, lakeshore access and a public beach. Located 11 miles east of Effie or 11 miles west of Togo.

BEAR HEAD LAKE STATE PARK

9301 Bear Head State Park Rd. | Ely
218-235-2520

Located 15 miles southeast of Tower, Bear Head Lake State Park features wildlife viewing opportunities, nature trails, camping sites, canoe areas and swimming areas. Located in Ely.



BIG RIDGE TRAIL

24263 Co. Rd. 560 | Pengilly
Located on 6 miles of forest near Swan Lake, the Big Ridge Trail is open for hiking, biking and cross-country skiing. Located south of Swan Lake.

BRIGHTON BEACH PARK

7030 Congdon Blvd. | Duluth | 218-730-4300
Features: parking, pavillion, picnic area, wedding rental, picnic tables, BBQ grills, hiking, biking, paved trail, swimming beach, carry-in canoe, birding and public fruit trees.

CHAMBERS GROVE PARK

13404 MN-23 | Duluth | 218-730-4300
Features: parking Lot, pavillions , rentable picnic areas, wedding rental, picnic tables, BBQ grills, hiking, biking, mountain biking, birding, fruit trees/public orchard and public restrooms.

DRUMBEATER ISLAND NATURAL AREA

Located on 17 acres of island within Pokegama Lake, Drumbeater Island Natural Area was developed to provide a wildlife habitat and undeveloped lakeshore for fish. Located southwest of Grand Rapids.

DULUTH HEIGHTS PARK

33 W Mulberry St. | Duluth | 218-730-4300
Features: parking lot, community center, building rental, picnic tables, BBQ grills, playground, softball field, baseball and pleasure skating.

DULUTH ROSE GARDEN

15 S 13th Ave. E | Duluth | 218-730-4300
Features: parking, public restrooms, paved trail and wedding rental.

ENGER PARK

1601 Enger Tower Drive | Duluth | 218-730-4300
Features: picnic areas, picnic tables, BBQ grills, hiking trails, climbing/bouldering, birding and public restrooms.

FURLONG FAMILY MEMORIAL PARK

County Road 69
Located on 8 acres of Norway pines, Furlong Family Memorial Park was donated in memory of John Furlong and features carry-in access to Loon Lake. Located south of Marble.



GUNN PARK

4680 MN-38 | Grand Rapids | 218-327-2855
Located on 50 acres of spruce, aspen and red and white pines, Gunn Park was developed by the Blandin Paper Company in the

1960s. Facilities include a reservable open-air pavilion with picnic tables, playground equipment, a fishing pier and ballfields. Located north of Grand Rapids in Arbo Township.

HARTLEY NATURE CENTER

3001 Woodland Ave. | Duluth | 218-724-6735
Features: parking lot, nature center , picnic area, building rental, wedding rental, picnic tables, playground, hiking trails, biking trails, mountain bike trails, cross country skiing, climbing/bouldering, birding and public restrooms.

KEENE CREEK PARK

Bristol Street & N 63rd Ave. W | Duluth | 218-730-4300
Features: parking lot, dog park, picnic tables, BBQ grills, playground, skate park, paved trail, biking, tennis and basketball.

LAKESIDE / LESTER PARK

61st Ave. East & Superior St. | Duluth | 218-730-4300
Features: parking lot, pavillions, picnic tables, wedding rental, playground, BBQ grills, hiking trails, biking, mountain biking, cross country skiing and birding.

LINCOLN PARK

25th Ave. W & 5th St. | Duluth | 218-730-4300
Features: parking lot, pavillion, rentable picnic areas, wedding rental, playground, BBQ grills, picnic tables, biking, hiking, paved trail and disc golf.

MCCARTHY BEACH STATE PARK

7622 McCarthy Beach Rd. | Side Lake | 218-274-7200
Features: lakeside park with a secluded, half-mile sandy beach, wooded land, hiking trails and biking trails.

OLCOTT PARK

901 N 9th Ave. W | Virginia | 218-748-7506
Features: a large playground area, bandstand and greenhouse.

WABANA TRAIL

29142 Scenic Dr. | Grand Rapids
Located on 6 miles of forest and wildflowers, the Wabana Trail is open for hiking, biking and cross-country skiing. Located northeast of Grand Rapids.

AREA ATTRACTIONS

ADVENTURE ZONE CANAL PARK

329 Lake Ave. S | Duluth | (218) 740-4000

AERIAL LIFT BRIDGE

601 S Lake Ave. | Duluth

BAYFRONT FESTIVAL PARK

350 Harbor Dr. | Duluth | (218) 722-5573

BLUEBERRY BOWL

44919 Golf Course Rd. | Deer River | (218) 246-8048

BLUEBERRY MEADOWS

34625 Eight Mile Rd. | Grand Rapids | (218) 326-0671

BOWSTRING SHORES RESORT

49231 Co. Rd. 173 | Deer River | (218) 832-3101

CHILDREN'S DISCOVERY MUSEUM

2727 US-169 S | Grand Rapids | (218) 326-1900

CINEMA 6

8426 Enterprise Dr. S | Virginia | (320) 251-9131

COMET THEATER

102 River St. S | Cook | (218) 666-5814

CUT FOOT / DEER RIVER RANGER STATION

1235 Division St. | Deer River | (218) 246-2123

DEPOT - ST. LOUIS COUNTY HERITAGE & ARTS CENTER

506 Michigan St. W | Duluth | (218) 733-7571

DULUTH CHILDREN'S MUSEUM

2125 W Superior St. | Duluth | (218) 733-7543

DU-LUTH PLAYHOUSE

211 E Superior St. | Duluth | (218) 733-7555

DULUTH ROSE GARDEN ERICKSON PARK

15 S 13th Ave. E | Duluth | (218) 730-4300

EAGLE RIDGE GOLF CLUB

1 Green Way | Coleraine | (218) 245-2217

EDGE CENTER FOR THE ARTS

101 2nd Ave | Bigfork | (218) 743-6670

ELY GOLF CLUB

901 Central Ave. S | Ely | (218) 365-5932

FOND-DU-LUTH CASINO

129 Superior St. E | Duluth | (218) 720-5100

FOREST HISTORY CENTER

2609 County Rd. 76 | Grand Rapids | (218) 327-4482

GIANTS RIDGE RECREATION AREA

6329 Wynne Creek Dr. | Biwabik | (218) 865-8000

GLENSHEEN MANSION

3300 London Road | Duluth | (888) 454-4536

GOLF ON THE EDGE

59851 County Rd. 261 | Bigfork | (218) 743-3626

GREAT LAKES AQUARIUM

353 Harbor Dr. | Duluth | (218) 740-3474

GREYHOUND BUS MUSEUM

1201 Greyhound Blvd. | Hibbing | (218) 263-5814



/ LEIF

ITASCA COUNTY HISTORICAL SOCIETY

201 N Pokegama Ave. | Grand Rapids | (218) 326-6431

ITASCA GUN CLUB

28006 Arbo Rd. | Grand Rapids | (218) 256-9431

INTERNATIONAL WOLF CENTER

1396 Hwy. 169 | Ely | (218) 365-4695

JUDY GARLAND BIRTHPLACE HISTORIC HOUSE

2727 S Pokegama Ave. | Grand Rapids | (218) 327-9276

LAKE SUPERIOR MARINE MUSEUM

600 Canal Park Dr. | Duluth | (218) 788-6430

LAKE SUPERIOR RAILROAD MUSEUM

506 W Michigan St. | Duluth | (218) 727-8025

LAKE SUPERIOR ZOO

7210 Fremont St. | Duluth | (218) 461-3527

MACROSTIE ART CENTER

405 1st Ave. NW | Grand Rapids | (218) 326-2697

MARCUS DULUTH CINEMA

300 Harbor Dr. | Duluth | (218) 722-1573

MARCUS LAKES CINEMA

4351 Stebner Rd. | Hermantown | (218) 729-0334

MINNESOTA DISCOVERY CENTER

1005 Discovery Dr. | Chisholm | (218) 254-7959

MINNESOTA MUSEUM OF MINING

701 Lake St. W | Chisholm | (218) 254-5543

NORTH AMERICAN BEAR CENTER

1926 Hwy. 169 | Ely | (218) 365-7879

NORTH SHORE SCENIC RAILROAD

506 W Michigan St. | Duluth | (218) 722-1273

PAULUCCI SPACE THEATRE

1502 23rd St. E | Hibbing | (218) 293-6850

PHEASANTS PLUS HUNTING PRESERVE

14897 Sago #4 | Warba | (218) 492-4450

POKEGAMA GOLF CLUB

3910 Golf Course Rd. | Grand Rapids | (218) 326-3444

SOUDAN UNDERGROUND MINE

Winter: 1379 Stuntz Bay Rd. | Soudan
Summer: 1302 McKinley Park Rd. | Soudan
(218) 300-7000

SPIRIT MOUNTAIN RECREATION AREA

9500 Spirit Mtn. Pl. | Duluth | (218) 628-2891

SUGARBROOKE GOLF CLUB

37584 Otis Lane | Cohasset | (218) 327-1462

THUNDER ALLEY XL & BIG THUNDER MINI GOLF

1401 E US Hwy. 169 | Grand Rapids | (218) 326-5950

TWEED MUSEUM OF ART

1201 Ordean Ct. | Duluth | (218) 726-8222

UNITED STATES HOCKEY HALL OF FAME

801 Hat Trick Ave. | Eveleth | (218) 744-5167

VIRGINIA AREA HISTORICAL SOCIETY

800 N 9th Ave. W | Virginia | (218) 741-1136

WHITE OAK CASINO

45830 US-2 | Deer River | (218) 246-9600

WILLIAM A IRVIN MUSEUM

350 Harbor Dr. | Duluth | (218) 722-7876

** Some locations may have seasonal hours, please phone ahead **





HUNTING SEASONS

For general information on firearm safety training call: 1 (888) 646-6367 or (651) 296-6157.

Contact the MN DNR for specific zone areas/dates:

Online: www.dnr.state.mn.us, Toll Free: 1 (888) 665-4236.

You can purchase hunting and fishing licenses by phone: 1 (888) 665-4236.

HUNTING

Bear

08/15/25 Baiting start date - Permit areas & no-quota area
09/1/25 - 10/19/25 Permit areas & no-quota area

Deer

09/13/25 - 12/31/25 Archery - Statewide
10/16/25 - 10/19/25 Early Antlerless
10/16/25 - 10/19/25 Youth - Statewide
11/8/25 - 11/23/25 Firearm (Season A) 100 Series permit areas
11/8/25 - 11/16/25 Firearm (Season A) 200 & 300 Series permit areas
11/22/25 - 11/30/25 Firearm (Season B) 300 Series permit areas
11/29/25 - 12/14/25 Muzzleloader - Statewide

Badger

10/18/25 - 03/15/26 North furbearer zone
10/25/25 - 03/15/26 South furbearer zone

Bobcat

01/4/25 - 01/19/25 South Furbearer Zone
12/20/25 - 01/17/26 North Furbearer Zone



Fox, Gray & Red

10/18/25 - 03/15/26 North furbearer zone
10/25/25 - 03/15/26 South furbearer zone

Opossum

10/18/25 - 03/15/26 North furbearer zone
10/25/25 - 03/15/26 South furbearer zone

Rabbit

09/13/25 - 02/28/26 Jack - Statewide
09/13/25 - 02/28/26 Cottontail & Snowshoe Hare - Statewide

Raccoon

10/18/25 - 03/15/26 North furbearer zone
10/25/25 - 03/15/26 South furbearer zone

Squirrel, Gray & Fox

09/20/25 - 02/28/26 Gray & Fox - Statewide

Grouse

09/13/25 - 11/30/25 Sharp-Tailed - Northwest zone
09/13/25 - 01/4/26 Ruffed & Spruce - Statewide

Pheasant

10/11/25 - 01/4/26 Ring-Necked - Statewide

Wild Turkey

04/16/25 - 05/31/25 Spring - Youth - Statewide
04/16/25 - 05/31/25 Spring - Archery - Statewide
04/16/25 - 04/22/25 Spring - A season - Statewide
04/23/25 - 04/29/25 Spring - B season - Statewide
04/30/25 - 05/6/25 Spring - C season - Statewide
05/7/25 - 05/13/25 Spring - D season - Statewide
05/14/25 - 05/20/25 Spring - E season - Statewide
05/21/25 - 05/31/25 Spring - F season - Statewide
10/4/25 - 11/2/25 Fall - Statewide

TRAPPING

Badger

10/18/25 - 03/15/26 North furbearer zone
10/25/25 - 03/15/26 South furbearer zone

Bobcat

01/4/25 - 01/19/25 South Furbearer Zone
12/20/25 - 01/17/26 North Furbearer Zone

Fox

10/18/25 - 03/15/26 Gray & Red - North furbearer zone
10/25/25 - 03/15/26 Gray & Red - South furbearer zone

Opossum

10/18/25 - 03/15/26 North furbearer zone
10/25/25 - 03/15/26 South furbearer zone

Rabbit

09/13/25 - 02/28/26 Jack - Statewide
09/13/25 - 02/28/26 Cottontail & Snowshoe Hare - Statewide

Raccoon

10/18/25 - 03/15/26 North furbearer zone
10/25/25 - 03/15/26 South furbearer zone

Squirrel

09/20/25 - 02/28/26 Gray & Fox - Statewide



*Check the MN DNR website for updates.
<https://www.dnr.state.mn.us>
or scan the QR code



You can purchase hunting and fishing licenses, cross-country ski passes and snowmobile trail stickers through the Electronic License System. Online www.dnr.state.mn.us, Toll Free: 1 (888) 646-6367
Or visit one of the ELS agents available throughout the area:

ITASCA COUNTY

BIGFORK

ANTLER LAKE STORE

51761 SCENIC HWY • BIGFORK • (218) 245-2369

LITTLE TURTLE LAKE STORE

49926 STATE HWY 6 • BIGFORK • (218) 832-3131

TWO RIVERS CENEX

406 N MAIN AVE • BIGFORK • (218) 743-3777

BOVEY

BALSAM STORE

41050 SCENIC HWY 7 • BOVEY • (218) 245-2285

HOLLYWOOD BAIT

54 COUNTY RD 10 • BOVEY • (218) 259-1848

PETRICH'S STORE INC

34438 SCENIC HWY • BOVEY • (218) 245-1310

RON'S KORNER MARKET

7896 HWY 169 • BOVEY • (218) 247-7351

COHASSET

CASEY'S GENERAL STORE #3471

15 US HWY 2 W • COHASSET • (218) 328-5189

RIVER RAT

38480 US HWY 2 • COHASSET • (218) 328-6171

DEER RIVER

BOWEN LODGE INC
58485 BOWENS RD • DEER RIVER • (800) 331-8925

BURGGRAF'S ACE HARDWARE OF DEER RIVER

108 MAIN AVE E • DEER RIVER • (218) 246-8628

EAGLE NEST LODGE

58671 EAGLE NEST RD • DEER RIVER • (218) 246-8701

FRED'S BAIT

363 MAIN AVE • DEER RIVER • (218) 246-8710

HOLIDAY STATIONSTORE #194

208 MAIN AVE E • DEER RIVER • (218) 246-2700

SCHULTZ'S BOWSTRING STORE

46023 STATE HWY 6 • DEER RIVER • (218) 832-3123

WILLIAM'S NARROWS RESORT

43465 WILLIAMS NARROWS RD • DEER RIVER • (218) 246-8703

WINNIE TRADING POST

38499 STATE HWY 46 • DEER RIVER • (218) 398-1225

EFFIE

EFFIE COUNTRY SERVICE
101 SE HWY 38 • EFFIE • (218) 743-3616

GOODLAND

FRED'S STORE
19517 COUNTY RD 560 • GOODLAND • (218) 492-4477

GRAND RAPIDS 38 OUTPOST INC

34322 COUNTY ROAD 233 • GRAND RAPIDS • (218) 327-0214

63 FUEL STOP

35 COUNTY RD 63 • GRAND RAPIDS • (218) 326-9230

BURGGRAF'S ACE HARDWARE

1115 E HWY 169 • GRAND RAPIDS • (218) 326-8594

GLEN'S ARMY NAVY STORE

701 NW 4TH ST • GRAND RAPIDS • (218) 326-1201

GOD'S COUNTRY OUTFITTERS

29755 STATE HWY 38 • GRAND RAPIDS • (218) 326-9866

HOLIDAY STATIONSTORE #162

202 E 4TH ST • GRAND RAPIDS • (218) 326-4204

HOLIDAY STATIONSTORE #248

920 S POKEGAMA AVE • GRAND RAPIDS • (218) 326-1092

L & M SUPPLY

1400 SOUTH POKEGAMA AVE • GRAND RAPIDS • (218) 326-2926

EDWARDS LUCKY SEVEN GENERAL STORE

1515 NW 4TH ST • GRAND RAPIDS • (218) 326-0515

POKEGAMA LAKE STORE

19457 S US HWY 169 • GRAND RAPIDS • (218) 326-9390

THOUSAND LAKES SPORTING GOODS

331 NW 4TH ST • GRAND RAPIDS • (218) 999-5992

WALMART SUPERCENTER #1609

100 SE 29TH ST • GRAND RAPIDS • (218) 326-9682

KEEWATIN

KEEWATIN SHORT STOP

210 W 1ST ST • KEEWATIN • (218) 741-3103

MARCELL

FRONTIER SPORTS

48919 STATE HWY 38 • MARCELL • (218) 832-3901

SPIDER LAKE RESORT

43859 SPIDER LAKE RESORT RD • MARCELL • (218) 326-8286

NASHWAUK

K-M CORNER STORE

36971 STATE HIGHWAY 65 • NASHWAUK • (218) 885-2472

LUCKY SEVEN GENERAL STORE

121 1ST ST • NASHWAUK • (218) 741-9634

SINCLAIR EXPRESS MART

830 1ST ST • NASHWAUK • (218) 885-1772

PENGILLY

THE GREAT OUTDOORS

BOTTLE SHOP & BAIT
16207 LAKE ST • PENGILLY • (218) 208-2117

SWAN LAKE SINCLAIR

31277 HWY 65 • PENGILLY • (218) 885-3806

SPRING LAKE

ANCHOR INN RESORT

55960 COUNTY RD 4 • SPRING LAKE • (218) 659-2718

SQUAW LAKE

DIXON LAKE RESORT

49442 DIXON LAKE RESORT RD • SQUAW LAKE • (218) 659-4612

MAX MINI STORE INC

50758 STATE HWY 46 • SQUAW LAKE • (218) 659-4235

SWAN RIVER

LUCKY SEVEN SWAN RIVER #24

16282 US HWY 2 • SWAN RIVER • (218) 492-4451

WIRT

SURE GAME WILDERNESS RESORT

52385 CO RD 31 • WIRT • (218) 659-2740

ST. LOUIS COUNTY

AURORA

HOLIDAY STATIONSTORE #184

5495 HWY 100 • AURORA • (218) 229-3883

BABBITT

RANGE COOPERATIVES INC

25 CENTRAL BLVD • BABBITT • (218) 827-2499

TIMBER BAY LODGE

8347 TIMBER BAY RD • BABBITT • (218) 827-3682

BIWABIK

LUCKY 7 BIWABIK #1

310 S MAIN • BIWABIK • (218) 865-6183

BRIMSON

HUGO'S

1898 HWY 44 • BRIMSON • (218) 848-2220

BROOKSTON

COUNTRY CORNER BAR

9497 HWY 2 • BROOKSTON • (218) 453-5660

BUHL

BUHL SHORT STOP

1001 FOREST ST • BUHL • (218) 258-3918

BUYCK

LIFE OF RILEY RESORT

3256 CEDAR RD • BUYCK • (218) 666-5453

VERMILION DAM LODGE

3276 RANDA RD • BUYCK • (218) 666-5418

CHISHOLM

LUCKY 7 CHISHOLM #6

1002 3RD AVE NORTHWEST • CHISHOLM • (218) 741-9634

COOK

COOK SHORT STOP

320 U.S. 53 • COOK • (218) 666-2272

LUCKY SEVEN COOK #2

11 HWY 53 S • COOK • (218) 666-9984

LUDLOW'S ISLAND RESORT

8166 LUDLOW DR • COOK • (218) 666-5407

MUSKEGO POINT RESORT

8147 BAYVIEW RD • COOK • (218) 666-5696

PEHRSON LODGE

2746 VERMILION DR • COOK • (218) 666-5478

TIMBUKTU MARINA

7401 OAK NARROWS RD • COOK • (218) 666-2434

ZUP'S OF COOK

201 HWY 53 SE • COOK • (218) 666-0205

COTTON

SPEEDWAY #4778

7521 COMSTOCK LAKE RD • COTTON • (218) 482-5599

CRANE LAKE ANDERSON CANOE OUTFITTERS

7255 CRANE LAKE RD • CRANE LAKE • (218) 993-2287

HANDBERG'S MARINE

7123 HANDBERG RD • CRANE LAKE • (218) 993-2214

NELSON'S RESORT

7632 NELSON RD • CRANE LAKE • (218) 993-2295

PINE POINT LODGE & RESORT

7533 GOLD COAST RD • CRANE LAKE • (218) 993-2311

CULVER

SWAN LAKE MARKET

7425 SWAN LAKE RD • CULVER • (218) 345-8406

DULUTH

CHALSTROM'S BAIT & TACKLE

5067 RICE LAKE RD • DULUTH • (218) 726-0094



DICK'S SPORTING GOODS #1017
1600 MILLER TRUNK
HIGHWAY • DULUTH •
(218) 727-2078

DULUTH MOTOR VEHICLE #003
6630 GRAND AVE • DU-
LUTH • (218) 624-0736

KING'S OUTDOOR EXPERIENCE
5675 MILLER TRUNK
HWY • DULUTH • (218)
729-5369

MINNO-ETTE
5109 FISH LAKE RD •
DULUTH • (218) 721-4800

GNESEN CONVENIENCE STORE
6049 RICE LAKE RD •
DULUTH • (218) 721-4433

HOLIDAY STATION- STORE #100
1530 WOODLAND AVE •
DULUTH • (218) 728-4544

HOLIDAY STATION- STORE #293
5430 GRAND AVE • DU-
LUTH • (218) 624-5201

HOLIDAY STATION- STORE #327
2605 LONDON RD • DU-
LUTH • (218) 724-7789

HOLIDAY STATION- STORE #354
3301 W ARROWHEAD
RD • DULUTH • (218)
786-0715

HOLIDAY STATION- STORE #409
5699 MILLER TRUNK
HWY • DULUTH • (218)
729-5689

KORNERSTORE #700
1301 COMMONWEALTH
AVE • DULUTH • (218)
341-6478

MARINE GENERAL
1501 LONDON RD • DU-
LUTH • (218) 724-8833

MARSHALL HARDWARE
4415 E SUPERIOR ST •
DULUTH • (218) 525-3638

MINNO-ETTE INC
5109 FISH LAKE RD •
DULUTH • (218) 721-4800

THE PEQUAYWAN INN
8744 PEQUAYWAN LAKE
RD • DULUTH • (218)
848-2201

ELY ARROWHEAD OUT-DOORS
1810 E SHERIDAN ST • ELY
• (218) 365-5358

CANADIAN WATERS INC
111 E SHERIDAN ST • ELY •
(218) 365-3202

CANOE COUNTRY OUTFITTERS
629 E SHERDAIN ST • ELY •
(218) 365-4046

ELY LICENSE BUREAU
17 E CHAPMAN ST • ELY •
(218) 365-6262

HOLIDAY STATION- STORE #144
1036 E
SHERIDAN ST
• ELY • (218)
365-6003

J&L HARD-WARE
128 E CHAP-
MAN • ELY •
(218) 365-6724

LATOURELL'S RESORT & OUTFITTERS
14793 MOOSE LAKE RD •
ELY • (218) 365-4531

LUCKY SEVEN ELY #11
620 SHERIDAN ST E • ELY •
(218) 365-3050

MERHAR'S ACE HARD-WARE
48 E CHAPMAN ST • ELY •
(218) 365-3129

NORTH COUNTRY CANOE OUTFITTERS
474 KAWISHIWI TRL • ELY •
(218) 365-5581

PIRAGIS NORTHWOODS CO
105 N CENTRAL AVE • ELY •
(218) 365-6745

SNOWBANK LODGE AND OUTFITTERS
14564 SNOW LODGE RD •
ELY • (218) 365-6032

SPIRIT OF THE WILDER-NESS
2030 E SHERIDAN ST • ELY •
(218) 365-3149



VOYA-GEUR SHORT STOP
1815 E SHERIDAN ST • ELY •
(218) 365-3450

VOYAGEUR NORTH OUTFITTER
1829 E SHERIDAN ST • ELY •
(218) 365-3251

WILLIAMS & HALL OUTFITTERS
14694 VOSBURGH RD • ELY •
(218) 365-5837

EMBARRASS TRAPLINE LIQUOR & C-STORE
4897 HWY 21 • EMBARRASS
• (218) 984-2962

EVELETH ELY LAKE SHORT STOP
7782 ELY LAKE DR •
EVELETH • (218) 744-3588

TOWN LINE SHORT STOP
3504 HWY 53 • EVELETH •
(218) 744-4005

FLOODWOOD LARRY'S SERVICE & BAIT
314 HWY 2 • FLOODWOOD •
(218) 476-2225

GILBERT HOLIDAY STATION- STORE #141
303 ARIZONA AVE W •
GILBERT • (218) 741-7190

LAKELAND STORE
4812 VERMILION TRL •
GILBERT • (218) 865-6194

HERMANTOWN FLEET FARM
4165 LOBERG AVE •
HERMANTOWN • (218)
722-4501

HOLIDAY STATION- STORE #190
4795 MILLER TRUNK HWY
• HERMANTOWN • (218)
722-9934

SPEEDWAY #4602
5601 MILLER TRUNK HWY
• HERMANTOWN • (218)
729-5084

WALMART SUPER-CENTER #1757
4740 MALL DR •
HERMANTOWN • (218)
727-1310

HIBBING HOLIDAY STATION- STORE #153
2517 13TH AVE E • HIB-
BING • (218) 262-2855

L & M SUPPLY
1101 E 37TH ST SUITE 2 •
HIBBING • (218) 262-6678

LUCKY SEVEN A-1 CORNER #23
1501 E HOWARD ST •
HIBBING • (218) 263-4340

LUCKY SEVEN GENERAL STORE HIBBING #15
3917 1ST AVE • HIBBING •
(218) 263-7344

WALMART SUPER-CENTER #2937
12080 HWY 169 • HIB-
BING • (218) 262-2351

HOYT LAKES LUCKY 7 HOYT LAKES #10
201 KENNEDY MEMORIAL
HWY • HOYT LAKES •
(218) 225-2055

KABETOGAMA COOPERS GATEWAY GENERAL STORE
9378 US HIGHWAY 53
• KABETOGAMA • (218)
875-2121

KAB OUTDOORS
9634 GAMMA RD •
KABETOGAMA • (218)
240-9494

LAKE KABETOGA-MA PINE AIRE RESORT
9978 GAPPA RD • LAKE
KABETOGAMA • (218)
875-2161

MOUNTAIN IRON CROSSROADS CONVE-NIENCE
3906 HWY 7 • MOUNTAIN
IRON • (218) 744-3748

WALMART SUPER-CENTER #4849
8580 ROCK RIDGE DR •
MOUNTAIN IRON • (218)
305-3314

ORR BIRCH FOREST LODGE AND RESORT
4442 BIRCH BREST RD •
ORR • (218) 757-3479

EBEL'S VOYAGEUR HOUSEBOATS
10326 ASH RIVER TRL • ORR
• (218) 374-3571

JIM'S ASH TRAIL STORE
12193 ASH RIVER TRL • ORR
• (218) 374-3071

NORMAN'S ONE STOP
4513 HWY 53 • ORR • (218)
757-3291

PELICAN BAY FOODS
4539 HWY 53 • ORR • (218)
757-3900

PROCTOR HOLIDAY STATIONSTORE #27
200 S BOUNDRY AVE •
PROCTOR • (218) 624-5004

HOLIDAY STATIONSTORE #85
9314 W SKYLINE PKWY •
PROCTOR • (218) 628-8000

SAGINAW CAYWOOD COUNTRY STORE
7407 HWY 2 • SAGINAW •
(218) 729-8200

SIDE LAKE CC CAMPGROUND #717
7595 MCCARTHY BEACH
RD • SIDE LAKE • (218)
254-5301

RB SIDE LAKE STORE
7505 HWY 5 • SIDE LAKE •
(218) 421-3581

SOUDAN SOUDAN STORE
24 MAIN ST • SOUDAN •
(218) 753-6566

TOWER THE Y STORE
6368 HWY 169 • TOWER •
(218) 753-3868

VERMILION FUEL AND FOOD
516 MAIN ST • TOWER •
(218) 753-2218

VIRGINIA HOLIDAY STATIONSTORE #41
1502 S 12TH AVE W • VIR-
GINIA • (218) 749-5985

L & M SUPPLY
8497 ENTERPRISE DR N •
VIRGINIA • (218) 749-2340

LUCKY SEVEN VIRGINIA #5
820 N HOOVER RD • VIR-
GINIA • (218) 741-1629

VIRGINIA SURPLUS
105 N 3RD AVE • VIRGINIA •
(218) 741-0331

FISHING SEASONS

INLAND WATERS

Lake Trout

12/30/23 - 03/31/24

Lakes entirely within the BWCA

Lake Trout

01/13/24 - 03/31/24

Lakes partially or completely outside the BWCA

Bullhead

03/01/24 - 02/28/25

Burbot (eelpout)

03/01/24 - 02/28/25

Channel Catfish

03/01/24 - 02/28/25

Cisco (tullibee), whitefish

03/01/24 - 02/28/25

Crappie

03/01/24 - 02/28/25

Gar

03/01/24 - 02/28/25

Other

03/01/24 - 02/28/25

Perch

03/01/24 - 02/28/25

Rock Bass

03/01/24 - 02/28/25

Smelt

03/01/24 - 02/28/25

Sunfish

03/01/24 - 02/28/25

White Bass

03/01/24 - 02/28/25

Flathead Catfish

04/01/24 - 11/30/24

Largemouth Bass

05/11/24 - 02/23/25

Northeastern Minnesota

Northern Pike

05/11/24 - 02/23/25

Sauger

05/11/24 - 02/23/25

Smallmouth Bass

05/11/24 - 02/23/25

Northeastern Minnesota

Walleye

05/11/24 - 02/23/25

Largemouth Bass

05/25/24 - 02/28/25,

Statewide except the northeast

Smallmouth Bass

05/25/24 - 09/08/24,

Statewide except the northeast

Sturgeon

catch-and-release

06/16/24 - 04/14/25

Smallmouth Bass

catch-and-release

09/09/24 - 02/23/25,

Statewide except the northeast

**Contact the MN DNR for specific zone information/dates:*

1 (888) 646-6367

www.dnr.state.mn.us


scan the QR code



(Fishing licenses are effective from March 1 to the last day of February of the following year. A fishing license for the current 2025-26 license year is effective until Feb. 28, 2026.)



TIRE SERVICE, INC.

201 Hoover Rd. N • Virginia, MN 
(218) 741-5562 • pompstire.com



SC
ELECTRIC

dba North American Electric

Lic# EA807380
Hibbing,
MN

COMMERCIAL • RESIDENTIAL • INDUSTRIAL

SHANE CARMAN

218-966-4675

sselectric2024@gmail.com

Red Rock
Hotel & Suites

1402 E
Howard St.
Hibbing, MN 55746

218-231-3501 • redrockhotelmn.com

AMENITIES
Free Breakfast • Free Wi-Fi
Indoor pool & hot tub • Wheelchair Accessible Rooms
Suites • 24-Hour Front Desk • Meeting Spaces
Fitness Room • Arcade • Pet Friendly

Rooms Starting at \$130
Located right on the Mesabi bike & hiking Trail

Vermilion Park Inn

The Mesabi Trail is completed from Grand Rapids to Ely & goes right by our door!

Snowmobilers & Cyclists Welcome

The Vermilion Park Inn is your ALL SEASON getaway!

(218) 753-2333
vermilionparkinn.com

30 Center St. • Soudan, MN

NEW: Charming 4 bedroom cottage with living room & kitchenette.
(2 night minimum)

218-966-0666

Skeet n' Sons
CONSTRUCTION
For All Your Project Needs

Shane Perkovich willowriver2017@gmail.com

ALL YOUR PROJECT NEEDS FREE ESTIMATES
Siding • Windows • Doors • Soffit & Fascia • Gutters • Decks & Additions



SOLUTIONS DRIVEN

Leader in Dewatering Solutions

Submersible Pumps • Floating Barges • 24/7 Service & Support

- Custom design options for all your dewatering applications
- Shore mounted mobile skids
- Climate controlled automated pump houses

Manufactured in Duluth, MN | MADE IN THE USA

4432 Venture Avenue, Duluth, MN 55811
www.gpmco.com • 218-722-9904



OLIVER
MANAGEMENT SERVICES
www.rentwitholiver.com

CONDOR APARTMENTS
400 Rajala Mill Rd. • Bigfork, MN 56623
218-743-3735
condor@olivercompanies.com

DEERING MANOR
201 3rd St. • Nashauk, MN 55769
218-969-6868
deering@olivercompanies.com

Amenities

- Key Access Entry • Onsite Laundry
- Community Room • Off-Street Parking
- On Bus Line

Project based section 8 family.

Amenities

- Key Access Entry • Onsite Laundry
- Garbage Chute Access on Every Floor • Elevator
- Pet-Friendly • Community Room • On Bus Line
- Off-Street Parking with plug-ins available

Project based section 8 elderly 62+ and/or a person with a disability.



Properties are Section 8, Income Qualifying Properties.



5465 Mt. Iron Dr.
Virginia, MN 55792

218-248-6789

shopmonstersink.com

monstersinkmn@gmail.com

Julie Simek ~ Owner



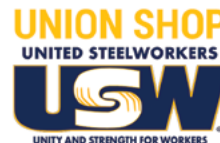
BIGFOOT
Stole My
Beer
IRON RANGE
MN.



Shirts * Jackets * Hats * Mugs

Tumblers * Custom Gifts

Your personal picture on anything



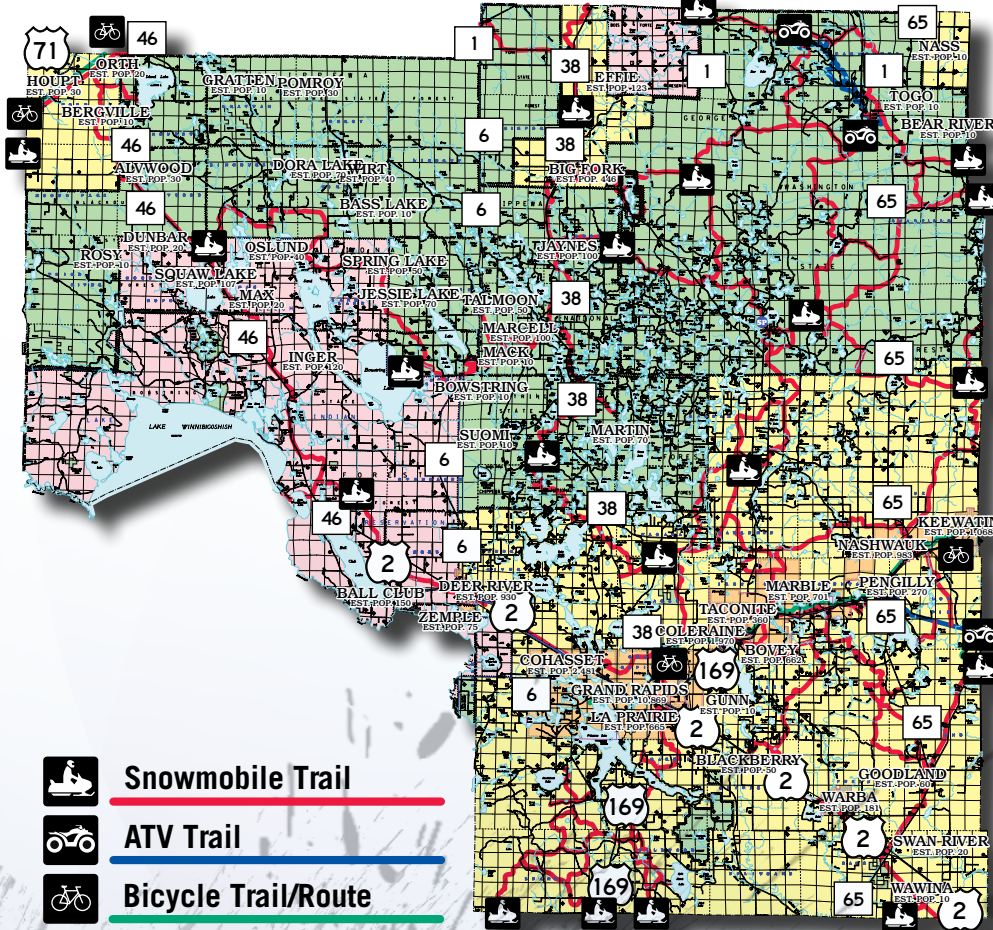
BULK ORDER DISCOUNTS
NO SET UP FEES






Monsters Ink Website

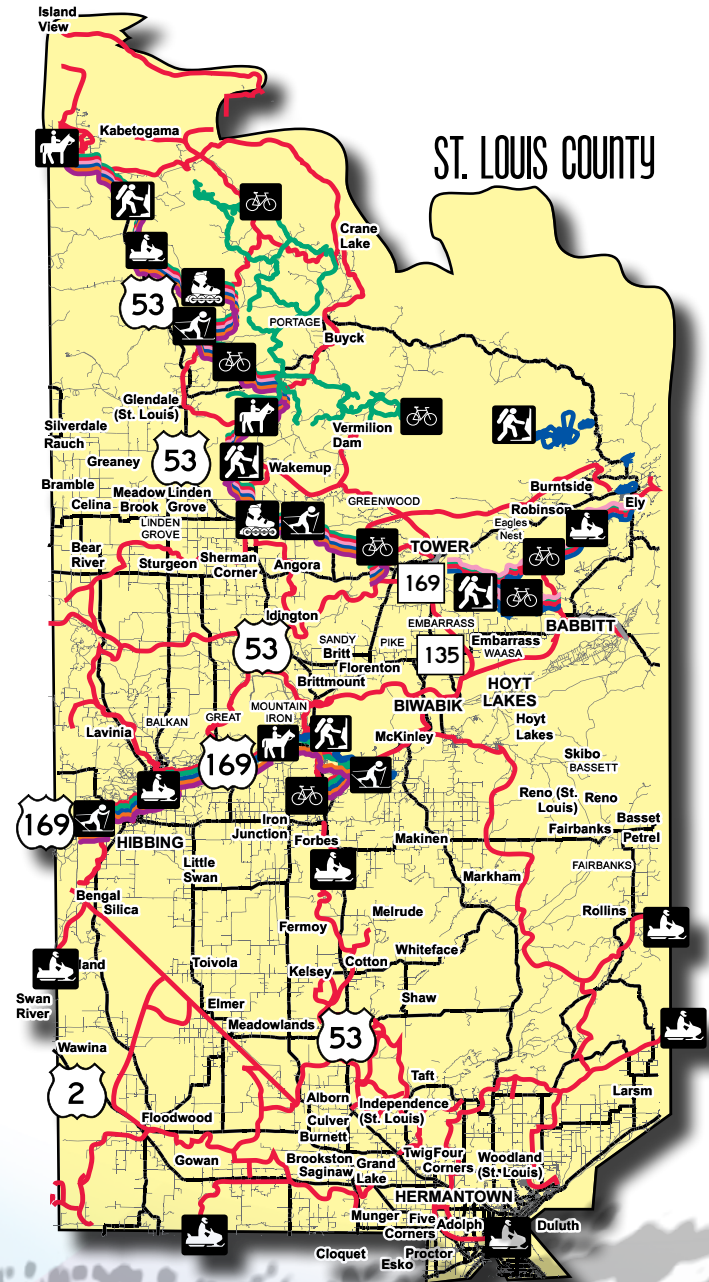
LOCAL AREA TRAILS

ITASCA COUNTY



-  Snowmobile Trail
-  ATV Trail
-  Bicycle Trail/Route

ST. LOUIS COUNTY



-  Equestrian Trail
-  Snowmobile Trail
-  ATV Trail
-  Bicycle Trail/Route
-  Cross-Country Ski Trail
-  In-Line Skating
-  Hiking/Walking Trail
-  Airport Locator



**Ely-Bloomenson
Community Hospital**

• 24/7
Emergency Care
• State-of-the-Art Technology

328 W. Conan St.
Ely, MN
218-365-3271
www.ebch.org



(218) 254-2700

**OPEN 7 DAYS
A WEEK**

**Opens Daily
at 12pm**

Pull Tabs • E-Tabs • Fish Fry Fridays

On the Trails- ATV & Snowmobile Accessible!



thehighway5.business.site 
6304 Highway 5 Hibbing, MN 55746



LAKE VERMILION

**SLOUDAN
UNDERGROUND
MINE STATE PARK**

ESCAPE THE ORDINARY:

**UNDERGROUND
ADVENTURE AWAITS**

mndnr.gov/soudanmine **218-300-7000 | SOUDAN, MN**



Lake Vermilion-Soudan Underground Mine State Park has the longest official state park name. The Lake Vermilion side of the park opened in 2010. There's plenty of history to be learned with a tour of Minnesota's oldest and deepest iron mine. You can hike through towering old growth pines to scenic overlooks, canoe in a quiet bay on Lake Vermilion, or camp in the Vermilion Ridge Campground, which has 32 large and widely-spaced campsites, all of which are capable of servicing either tents or RVs. Three spectacular group camps are also located at the campground, and each can house between 30-50 people. Each of the group camps also features a large, fully screened picnic shelter with a long counter and shelves for food preparation and serving, and electrical service. The park also has eight camper cabins, a cabin on an island in Lake Vermilion and remote campsites that visitors can hike or paddle to, any of which offers plenty of seclusion.

And no trip would be complete without a visit to the historic Soudan Mine. The park staff will be offering surface tours starting Memorial Day weekend, and then are hopefully going to be opening back up the underground tours at some point during the summer. After four years of closure, first due to the pandemic, a reduced tour schedule in 2021, and closure for a mine shaft lining renovation project in 2022 and 2023, the park reopened underground tours for six weeks in the spring of 2024 before needing to close due to a historic flood on June 18th, 2024. The park received 7.6 inches of rain in 24 hours, one of the largest rainfalls on record in northeastern Minnesota. The same night, a lightning strike cut power to the park, halting the pump system, which removes water from the mine. The combination of heavy rainfall and loss of power to the dewatering system led to flooding in the bottom level where the underground tour operates. Staff have been working very hard for the past year reclaiming the route.

Mine interpreters are ready to start sharing the story with visitors above ground and the website will have the most up to date information about when underground tours will be available. Surface tours are free to the public. Starting Memorial Day weekend, the park is open seven days a week. Call 218-300-7000 to reserve, or else just drop by and see when the next tour is available. The tours usually last around an hour and a half.

www.dnr.state.mn.us 

So, You have decided to get a pet... NOW WHAT??



Commitment and Time: Owning a pet is a long-term commitment. Before bringing a pet home, consider your lifestyle and ensure you have enough time to spend with your pet. Dogs, cats, and many other animals require attention, exercise, and mental stimulation.

Choose the Right Pet for Your Lifestyle: Different pets have varying needs, temperaments, and activity levels. Research and select a pet that fits well with your lifestyle, living situation, and family dynamics. Whether you choose a dog, cat, bird, fish, or any other animal, make sure you can provide for its specific needs.

Proper Nutrition: Feed your pet a balanced and nutritious diet suitable for their species and age. Consult with a veterinarian to determine the best food options for your pet's health and well-being.

Regular Exercise: Most pets need regular physical activity to stay healthy and happy. Engage in playtime and exercise with your pet daily, as it helps prevent obesity and provides mental stimulation.

Routine Veterinary Care: Schedule regular check-ups with a veterinarian to monitor your pet's health, get necessary vaccinations, and address any concerns. Early detection of health issues can often lead to better outcomes.

Spaying/Neutering: Consider spaying or neutering your pet if you don't plan on breeding. This helps control the pet population and can have health benefits for your pet.

Training and Socialization: Properly train your pet to follow basic commands and have good manners. Socialize them with other animals and people from a young age to prevent behavioral issues later on.

Provide a Safe Environment: Ensure that your home and yard are safe for your pet. Remove hazards, keep toxic substances out of reach, and provide appropriate shelter from extreme weather conditions.

Grooming: Regular grooming is essential for most pets. Brush their fur, trim nails, and clean their ears as needed to keep them comfortable and healthy.

Identification and Microchipping: Keep identification tags with your current contact information on your pet's collar. Consider microchipping your pet as an extra measure to ensure they can be identified if lost.

Love and Attention: Pets thrive on love and attention from their owners. Spend quality time with your pet, provide affection, and build a strong bond.

Respect and Understanding: Learn to understand your pet's body language and behavior. Respect their boundaries and feelings, and avoid forcing them into uncomfortable situations.



Patience and Forgiveness: Pets, especially young ones, can be mischievous or have accidents. Be patient with them during the training process and forgive any mistakes they make along the way.

Emergency Preparedness: Have a plan in place for emergencies, including natural disasters. Know how to evacuate with your pet safely if needed.

If you have just rescued / adopted a new fur baby, please it is important to remember the 3-3-3 RULE:

3 Days:

In the first 3 days being in its new home, they will be feeling overwhelmed, scared & unsure of what is going on. They may also be uncomfortable being "themselves", and may not want to eat or drink. They may want to "shut down" or hide under a bed or in a crate, and they will test boundaries.

3 Weeks:

At this point, they may be a lot more comfortable & settling in. Learning a new routine can be overwhelming, so please be patient. By now they may have figured out the new environment & accepted that this may be their FURever home. Their personality traits will start to show, as well as any behavior issue that may be present.

3 Months:

For most fur babies, 3 months is enough time to finally be comfortable and begin to build trust and a true bond. A sense of security may be present & a set routine will help this process.

Please know that this is not the rule with every rescued or adopted pet, as some may need 6 months to a year to adjust & adapt, depending on MANY factors. Age of animal, what type of an environment did they come from?

DOG PARKS

Eveleth Dog Park

701-1099 Fayal Ave. | Eveleth

Keene Creek Dog Park

Lower parking lot: 28 N 62nd Ave. W | Duluth

Upper parking lot: 6220 Bristol St. | Duluth

Observation Dog Park

914 W 3rd St. (behind the building) |

Duluth

Jean Duluth Dog Park

3567 Riley Rd. | Duluth

K9 Haas Dog Park

800-898 101st Ave. W | Duluth

Grand Rapids Dog Park & Veterans Memorial Park

7th Ave. SE & Hwy. 2

Grand Rapids





Let Wildlife be Wild

✦ Bringing a wild animal home will stress it out. The stress can cause health problems or even death. Most wild animals see people and domestic animals as a threat.

✦ Wild animals can carry diseases and parasites that can affect humans and domestic animals.



✦ The diet requirements of a wild animal are very hard to replicate in captivity. Without a complete diet wild animals run a high risk of having nutritional deficiencies that can lead to deformations or death. On the other hand for local birds providing supplemental food and water may be beneficial with correct practice.

✦ Wild animals raised by humans don't learn their normal behaviors or survival skills and shouldn't be released into the wild.

✦ If you come across an injured animal don't try and help it until contacting your local wildlife agency to see what they recommend.

✦ It's illegal for an unauthorized citizen to raise wild animals in most states.

- A healthy animal in its natural environment has the best chance of survival.
- A young wild animal by itself does not mean it's an orphan. It is common for adults to leave their young unattended while they forage or hunt.
- Wild animals are not very safe as pets.
- It is false that the human scent on a wild animal will make the parents reject it.



Finding Safe Water Solutions

40 years of experience in the well drilling, pump installation service & repair business.

- Prompt service • Free Estimates • Residential & Commercial
- Island Drilling & Remote Sites • Submersible & Jet Pumps
- Pump Sales & Service • Complete Water Systems
- Water Treatment • Hydro Fracking • Geothermal Wells
- Solar Power Wells • Well Sealing • Sauna Sales
- Permanent Dock Construction



froebros.com

WELL DRILLING

218-666-5466

9047 Hwy. 115 • Cook, MN