



IRON AND VILAS
COUNTIES, WI AND
GOGEBIC COUNTY MI

FREE
Resident
Guide

www.LincolnMarketing.us



SEL/AMSOIL



**BILL & DONNA
DURAND**

ZO# 611

SEL/AMSOIL ACADEMY

SEL/AMSOIL MUSEUM

SEL/AMSOIL

NATURAL GARDENS

**Join With The Nation's
Sales "Leaders" Since 1976!**
BILL & DONNA DURAND, ZO# 611
"HALL OF FAME"

7 Star Regency Platinum Direct Jobber
Over 20,000 Online Members
Over 120 Downline Directs

"Let Us Help You Build Your Own Business"

Free 6 month Membership to first **10** Responders.
***** **Call Or Go Online Today!** *****

**Award
Sales
6102**

**6102
Sales
Award**

WI Office: 1-800-416-7109

NY Office: 1-917-745-7423

www.bestvaluesynthetic.com

"Factory Direct...Nobody Beats Our Prices"



Vision Center Now Open!

Walmart 

Save money. Live better.

SUPERCENTER

8760 Northridge Way
Minocqua, WI 54548

715-356-1609

www.walmart.com

Boundary Waters-
Well Done Water Systems
Plumbing & Heating

John Modjewski
JP# 230741 P# 6669
MIMP# 8711278
WIMP# 230368

"We get to
the POINT!"

**Serving you for
30 Years**

715-479-7678

690 State Hwy. 17 South
Eagle River, WI 54521

- Cottage Care
- Point Well Restoration
- Hydro Heating
- 24 Hour Customer Service

CLOVERLAND MOTORSPORTS, INC

Sales, Service, Parts & Rentals

Snowmobiles • ATV's • PWC

ATV & SNOWMOBILE RENTALS
ALL NEW POLARIS & SKI-DOO

In the Heart of Big Snow Country
Located 1 Mile East of Hurley, WI



AUTHORIZED
DEALER

ski-doo



300 E Cloverland Dr • Ironwood, MI 49938 • 800-932-1202

WWW.CLOVERLANDMOTORSPORTS.COM

**HELP
SUPPORT**

YOUR

**LOCAL
BUSINESS**

TABLE OF CONTENTS

2-3	LOCAL AREA EVENTS
4-5	RESIDENTIAL SERVICES
6	IRON COUNTY HISTORY
7	IRON COUNTY COMMUNITIES
8	VILAS COUNTY HISTORY
9	VILAS COUNTY COMMUNITIES
10	GOGEBIC COUNTY HISTORY
11	GOGEBIC COUNTY COMMUNITIES
14-15	FISHING SEASONS
16	LOCAL AREA ATTRACTIONS
18-19	HUNTING SEASONS
20-22	DNR LICENSE CENTERS
23	PARKS & RECREATION
30-31	AREA TRAILS

Scan the QR Codes
to go to the
individual county
pages.

Iron County



Vilas County



Gogebic County



This free publication is made possible by the advertisers and other local agencies and may not be reproduced. Please support the local advertisers on this publication. Comments and/or suggestions may be directed to: info@lincolnmarketing.us

View this publication online at www.LincolnMarketing.us

Get Active!!!

- Yard Work
- Gardening
- Walk the Dog
- Bike Ride
- Swimming
- ANYTHING!!!

Go Outside and Do SOMETHING!

Anything to get your heart rate up,
and your blood flowing...

YOU'LL FEEL BETTER and it's good for your health!

LOCAL AREA EVENTS

January

Pro-Vintage Snowmobile Olympus | Ironwood
Sno-Goers Winter Blast | Mercer
Justin Donner Memorial Ice Fishing Tournament | Iron County
Sno-Goers All-U-Can-Eat | Mercer
Sno-Goers Annual Poker Run | Mercer

February

Valentine's Day Dinner Party | White Pine
Annual White Thunder Riders Auction | Hurley
Sno-Goers Breakfast | Mercer
Claus Kraetke Memorial Ice Fishing Jamboree | Iron County

March

White Thunder Riders 50/50 Raffle | Hurley
St. Patrick's Day Party | White Pine

April

The Legacy of Gaylord Nelson | Manitowish Waters
Family Movie Night | Boulder Junction
Crane Count | Manitowish Waters
Minocqua Home, Lifestyle & Recreation Show | Minocqua
Taste of the North | Minocqua
Get Your K's On | Minocqua
23rd Annual Danceworks Unlimited Dance Recital
Father/Daughter Dance | Eagle River
Acoustic Bat Monitor Training

May

Annual Spring Stampede | Sayner
May Day Tea Party
Martini's in May | St. Germain
Loons of the North | Manitowish Waters
11th Annual Birding Festival | Manitowish Waters
Sing-Along: The Sound of Music | Rhinelander
Sea Kayaking in the Apostle Islands
Claire d'Loon's Birthday | Iron County
Northern Exposure Golf Scramble | Phelps
The Step Crew | Eagle River
The Taste of the Northwoods | Iron County
Treasure Bazaar | Boulder Junction
Trinity Lutheran Church Ladies Guild Tea
Third Thursday Theatre | Boulder Junction
Memorial Weekend "Veteran's Salute" ATV/UTV Rally | Hurley
Memorial Weekend ATV Rally | Mercer
Town Wide Garage Sale | Boulder Junction
Eagle River Gun Show | Eagle River
Woodruff Memorial Classic Car Show | Woodruff
Memorial Day Arts & Crafts Show | Eagle River
Land O' Lakes Summer Launch | Land O' Lakes
Classic Sled Roundup | St. Germain
The BIG Event: Auction & Dinner | Manitowish Waters
Neighbor to Neighbor Program Series | Boulder Junction
Trees for Tomorrow Scholarship Golf Outing | Eagle River
June Bloom Arts & Crafts Festival | Minocqua

June

1st Annual Support for Sight Golf Outing | Iron County
8th Annual Walk in the Woods | St. Germain
Cathy's 17th Annual Ice Cream Social | St. Germain
Madisalsa | Rhinelander
Statewide Shop Hop at Cheri's Fabric to Quilt
Indie Horror TV Cabin Weekend | Eagle River
1st Annual Mercer Bird Festival | Iron County
Lupine Junefest | Mercer
Hank Lesniak's Valley of the Giants Fishing Tournament | Phelps
Health Fair | Eagle River
Callie Rohr Memorial Canoe & Kayak Race | Conover
10th Annual Antique & Classic Transportation | St. Germain
Rummage-O-Rama | Phelps
Great Northern Beer Festival | Eagle River
Third Thursday Theatre | Boulder Junction
Props & Pistons | Eagle River
Solstice Festival | Manitowish Waters
IMPS/USA Modelers | Eagle River
Devils Elbo 5K | Arbor Vitae
Benefit Auction | Eagle River
ERFSC/USFS International Test Session | Eagle River
Minocqua Island Swim Challenge | Minocqua
Presque Isle Community Library Annual Book Sale | Presque Isle
11th Annual Freedom 5K Fun Fun | St. Germain
Chamber 38th Annual County Fair | Presque Isle
Taste of Conover | Conover
Independence Day Celebration | St. Germain

July

July 3 Celebration | Land O' Lakes
Fireworks | Land O' Lakes
Muggy Buggy 5K & Xtreme Mud Run | Minocqua
Independence Day Celebration & Parade | Manitowish Waters
BarBQ & Corn Roast | Eagle River
Star Spangled Jubilee | Boulder Junction
25th Annual Volunteer Fire Department Giant Chicken Barbeque | Boulder Junction
Fourth of July Parade and Picnic in the Park | Land O' Lakes
July 4 Celebration | Presque Isle
Boat Parade | Winchester
Chamber Bike & Buggy Parade | Presque Isle
CFD Pancake Breakfast | Conover
Library Friends Book Sale | Eagle River
3rd Annual Memorial Golf Scramble | Mercer
33rd Annual Bear river Pow Wow | Lac du Flambeau
Island Art Walk | Minocqua
Ladies Guild Sale & Salad Luncheon | Boulder Junction
Annual Big Bang Golf Outing | Land O' Lakes
Fleaazaar | Manitowish Waters
Manito Art League Art Show | Manitowish Waters
47th Annual Gem & Mineral Show | Minocqua
Bear Cupboard Run | Minocqua
Artarama | Eagle River
Spend the Day in Manitowish Waters | Manitowish Waters

July (Cont.)

Annual Chicken Barbeque | Winchester
Strawberry Social | Boulder Junction
Northwoods Summer Art Tour
20th Annual Mike Roth Memorial Run | Minocqua
Art Impressions | Land O' Lakes
Used Book Sale and Silent Auction | Land O' Lakes
Joe Bucher Blues Fest | St. Germain
Community Foundation Fundraising Event | Boulder Junction
CFD/EMS Auto Show | Conover

August

Iron County Fair | Saxon
39th Annual Firman's Picnic | Arbor Vitae
Community-wide Garage Sales | Land O' Lakes
5th Annual Forest Fest | Eagle River
Mark Mile & 5K | Minocqua
Syner/Star Lake Street Fair | Sayner
Fireman's Picnic | Presque Isle
Twos the Night Before Loon Day | Mercer
Loon Day Art & Craft Fair | Mercer
After Loon Delight Craft Show | Minocqua
Barbecue & Corn Roast | Eagle River
Musky Jamboree Street Party | Boulder Junction
Turtle Flambeau Flowage Association Pig & Corn Roast
Trash N' Treasure Sale | Eagle River
Open Studio/Garden Walk | Phelps
Boulder Junction History Day | Boulder Junction
St. Rita's Annual Spaghetti Dinner | Presque Isle
Oktoberfest | Conover
Krazy Day | Minocqua
Vilas County Fair | Eagle River
Gogebic County Fair | Ironwood
15th Annual Polish Regatta
Presque Isle Fine Art Show | Presque Isle
MERMH Auxiliary Fashion Show | Eagle River
Paul Bunyan Fest | Eagle River
National Championship Musky Open | Eagle River
Wounded Warriors Dinner/Dance | Eagle River
Bo-Boen's Benefit Pig Roast & Bash | St. Germain
World Championship ATV/UTV Derby | Eagle River

September

Can-Yak the Turtle | Mercer
Eagle River Gun Show | Eagle River
Northwoods Bad Dash | Manitowish Waters
Pride & Joy Car Show | Minocqua
Lake Minocqua/Kawaguesaga Lake Association Pig Roast | Minocqua
4th Annual Minocqua No Frills Marathon | Minocqua
Sausage Fest | Eagle River
Phelps Historical Museum Open House | Phelps
Annual Steamboat Gathering | Eagle River
Wild Rice Fest | Lac du Flambeau
Fall Harvest Festival | Lake Tomahawk
Northern Exposure Golf Scramble | Phelps

September (Cont.)

Scarecrow Fest | Phelps
Lakeland Rotary's Rump Roast Run | Minocqua
Beef-A-Rama | Minocqua
Wizard Fest | Eagle River
Chamber Wild Game Cook-off | Presque Isle

October

Cranberry Fest Book Sale | Eagle River
Zurko Antique & Collectibles Market | Eagle River
Cran-A-Rama | Manitowish Waters
Cranberry Fest Luncheon | Eagle River
Pig Roast & Gun Raffle | Woodruff
14th Annual Wine & Beer Tasting | Boulder Junction
Pumpkin Run ATV Rally | Mercer
Northwoods Fall Art Tour | Vilas County
Annual Pumpkin Run ATV Rally | Mercer
20th Annual Harvest Fest | Boulder Junction
Halloween & Trick or Treat | Sayner
Night at the Museum | Eagle River
Hallow-Fest | Eagle River
Spooktacular | Presque Isle
Kids Halloween Party | Conover
Halogras | Eagle River

November

November Christmas Bazaar | St. Germain
Fall Fest of the Forest | Manitowish Waters
Veterans' Day Sale | Eagle River
5th Annual Great Shopping Escape | Sayner
Holiday Bazaar & Christmas Cookie Sale | Eagle River
22nd Annual Christmas Craft Fair | Boulder Junction
Turkey and Traditions | Eagle River
Santa Comes to Town | Land O' Lakes
Annual Christmas Walk | Boulder Junction
Breakfast with Santa | Land O' Lakes
Christmas Craft Sale | Land O' Lakes
Small Business Saturday | Boulder Junction
Sleigh Rides | Eagle River
Christmas Kick-Off & Ice Shanty Parade | Eagle River

December

27th Annual Tree of Love
Live Nativity | Eagle River
Santa comes to Loon Town for Mercer's Community Christmas Celebration. Candy Cane Parade | Mercer
Children's Christmas with Santa | Presque Isle
9th Annual Between the Holidays Celebration
New Year's Eve Fireworks | Woodruff

Iron County, WI

Aging & Disability.....	866-663-3607
Child Support.....	715-561-4485
Circuit Court.....	715-561-4054
Clerk of Courts.....	715-561-3375
Coroner.....	715-561-3800
Corporation Counsel.....	906-932-4010
District Attorney.....	715-561-5671
Emergency Management.....	715-561-3266
Health Services.....	715-561-2191
Human Services.....	715-561-3636
Highway.....	715-561-4965
Information Technology.....	435-477-8370
Land & Water Conservation.....	715-561-2234
Land Use Planning & Zoning.....	715-561-5414
Register of Deeds.....	715-561-2945
Sheriff.....	715-561-3800
Solid Waste.....	435-865-7015
Surveyor.....	715-561-2945
Treasurer.....	715-561-2883
Veteran Services.....	715-561-2190

Vilas County, WI

Aging & Disability.....	800-699-6704
Child Support.....	715-479-3705
Circuit Court.....	715-479-3638
Clerk of Courts.....	715-479-3632
Coroner.....	800-472-7290
Corporation Counsel.....	715-479-3714
County Clerk.....	715-479-3600
District Attorney.....	715-479-3614
Emergency Management.....	715-479-3690
Health Services.....	715-479-3656
Human Serves.....	715-369-2215
Highway.....	715-479-4641
Information Technology.....	715-479-3666
Land & Water Conservation.....	715-479-3747
Land Use Planning & Zoning.....	715-479-3620
Register of Deeds.....	715-479-3660
Sheriff.....	715-479-4441
Solid Waste.....	715-479-3648

Surveyor.....	715-479-3684
Treasurer.....	715-479-3609
Veteran Services.....	715-479-3629

Gogebic County, MI

Aging & Disability.....	866-642-4582
Child Support.....	906-663-6200
Circuit Court.....	906-663-4211
Clerk of Courts.....	906-663-4518
Coroner.....	906-932-5331
County Clerk.....	906-663-4518
District Attorney.....	906-667-0471
Emergency Management.....	906-667-1118
Health & Human Services.....	906-663-6200
Land & Water Conservation.....	906-663-4512
Register of Deeds.....	906-667-0381
Sheriff.....	906-667-0203
Treasurer.....	906-663-4517
Veteran Services.....	906-667-1110

Head Start/Early Head Start

Quality Pre-School Programs Prenatal-5 years old
in Hurley, Ashland, Phillips, Bayfield, Brule and Superior, WI



Head Start is a fun place for your child to learn and grow

It includes:

- School readiness curriculums based on Wisconsin Early Learning Standards
- Healthy meals and snacks
- Safe transportation provided for 3-5 year old classrooms
- Meet new friends
- Service to children with disabilities
- Authorized community preschool site (Superior, Brule & Phillips)

Family  Forum ,Inc.

www.familyforum.org

1507 Tower Avenue
Suite 312
Superior, WI 54880
715-392-9896 or 1-800-392-4473



*I*ron County was created in 1893 from Ashland and Oneida Counties, and it was named for the iron deposits near the lake. It usually gets around 200 inches of snow annually. There are over 500 miles of snowmobile trails and 175,000 acres of forests. Hurley is the county seat. Iron County is located in northwest Wisconsin and has a population of nearly 6,000.

Cities

Hurley
Montreal

Towns

Anderson
Carey
Gurney
Kimball
Knight
Mercer
Oma
Pence
Saxon
Sherman

Hurley

Hurley was founded to serve lumbermen and miners. Hurley and Gile were lumber towns, with many mining towns nearby. Hurley got its name from M. A. Hurley, an attorney of Wausau. In 1885, his first name was dropped and the community became known as simply Hurley instead of Glen Hurley. Henry Meade was Hurley's first mayor. John Ankers was Hurley's first town clerk, justice of the peace, and fire chief. In 1888 there were two large fires that destroyed most of the city, but the people recovered and it was rebuilt with brick and stone. He also opened Hurley's first saloon. Hurley was also the home of Delia Zarzyski, where she lived her entire life with her husband Leonard. They had three children, one of whom is Paul Zarzyski who performs across the country and has written poems and books. The population is about 1,500.

Montreal

The Montreal Mining Company had several copper and iron ore mines in the area, and is what Montreal was named after. Miners leased the land near the mine shaft, and the company began renting homes to the miners in 1918. The local mine closed in 1962 after operating for a century and shipping 45 million tons of iron ore. The National Register of Historic Places added many of these houses to their register in 1980. The ore deposits from the mines can still be seen off Highway 77. Today the population is about 800 people.



AROUND THE CORNER PUB
FRIDAY'S - "All You Can Eat" Fish Fry or Pub Chicken or COMBO of both!
HOMEMADE PIZZA - TO GO ORDERS AVAILABLE
WED - SUN 7AM - 11AM SERVING BREAKFAST
BAR HOURS 11AM - CLOSE • KITCHEN 11AM - 11PM Daily
715-476-2472
2633 Railroad St. • Mercer, WI 54547
(1 blk east of Hwy. 51 in downtown Mercer)
www.aroundthecornerpub.com



Vilas County was set off from Oneida County in 1893 by William Freeman Vilas. He was one of many people coming from New England as part of a wave of "Yankee" migrants who helped to found the state, and he served as senator from 1891 to 1897. The earliest people in the county were members of the Chippewa band of Native Americans, though migrants had constructed wagon roads and trails, as well as a logging industry in the area in the 1850s. The population is over 21,000 and the county seat is Eagle River.

Cities

Eagle River

Towns

Arbor Vitae
Boulder Junction
Cloverland
Conover
Lac du Flambeau
Land O' Lakes

Towns (Cont.)

Lincoln
Manitowish Waters
Phelps
Plum Lake
Presque Isle
St. Germain
Washington
Winchester

Arbor Vitae

Arbor Vitae is one of the oldest towns in Vilas County, having been founded in the 1890s. Today the community focuses mainly on tourism, and has many cabins and campgrounds people can stay at. There are an abundance of outdoor activities for people to do. Many of the trails used today come from abandoned rail systems and logging roads. There is a population of over 3,000 in Arbor Vitae.

Boulder Junction

Railroad tracks were laid down in 1903, and this area would become Boulder Junction. While the railroads were used for the logging industry, many outdoorsmen were also attracted by them. Tourism grew and resorts were built to accommodate all the people. The population is almost 1,000.

Eagle River

Eagle River's name comes from the high amount of eagles nesting along the river. In 1857 numerous families moved into the area, creating a settlement. In 1885, the town of Eagle River was created because so many of the families were very involved in the community and were continuing what the original settlers had started. Today the city is a popular vacation and retirement destination. The Eagle River population is over 1,000.

SUNDAY LAKE SUPERMARKET
Wakefield, Michigan

**FINE SELECTION OF:
FRESH MEAT • GROCERIES • PRODUCE**

OPEN: Monday - Friday 8am-7pm; Saturday 8am-6pm; Sunday 9am-4pm

1110 US 2 • Wakefield, MI 49968 • (906) 224-9491



*I*n 1871, Prof. Raphael Pumpelly of Harvard University, possibly the first professionally trained mining engineer in the United States, discovered iron ore in what would later become Gogebic County. He came to this iron range by sailboat and then traveled 20 miles south by land to the site in Ironwood near the abandoned gas plant. After establishing camp in tents, Pumpelly noticed yellow stains on rocks. After this discovery, he and his financial backers purchased two miles, which in later years became the site of the Newport and Geneva iron mines. The population of Gogebic is over 16,000 and the county seat is Bessemer.

Cities

Bessemer (County Seat)
Ironwood
Wakefield

Townships

Calumet
Bessemer
Erwin
Ironwood
Marenisco
Wakefield
Watersmeet

Bessemer (County Seat)

In 1884, when the community began there was a nearby mine called Bessemer which the town was named after. The mine itself had been named after a British metallurgist, named Henry Bessemer. Today the city has a population of nearly 2,000.

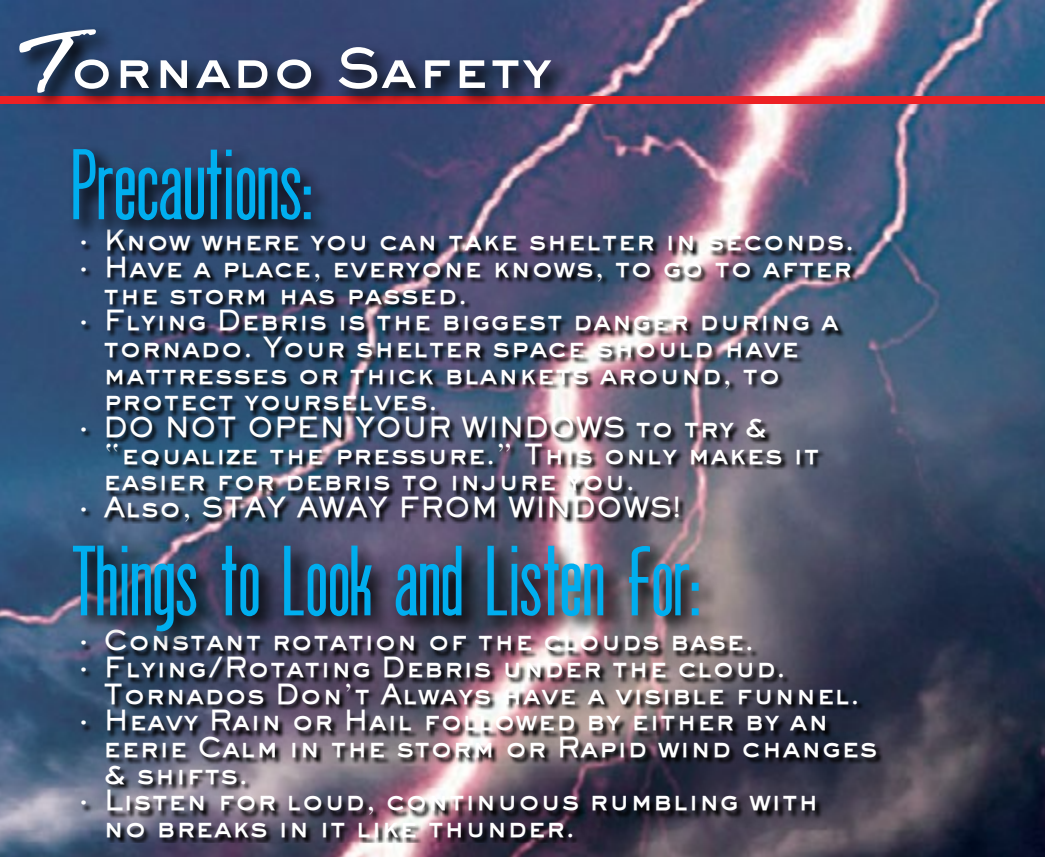
Ironwood

The town of Ironwood was settled in 1885. In the 1870s iron ore had been discovered but it wasn't until the railroad opened that people were able to extensively explore the deposits of ore. Several mines were discovered and with the addition of lumber works in the area, many immigrants were drawn to Ironwood. The town's name is generally considered to have come from a mining captain by the name of James Wood.

Wakefield

Wakefield was platted in 1886 by George M. Wakefield. Much of the reason for founding Wakefield was because of the discovery of iron on the east end of Sunday Lake. This discovery brought in many mining companies, and many nearby cities such as Plymouth and Pike are also named after these mines. The Sunday Lake Mine closed in 1961, and with the mining jobs gone, many goods and service jobs opened, along with the forest industry and tourism becoming a much bigger part of the economy.





TORNADO SAFETY

Precautions:

- KNOW WHERE YOU CAN TAKE SHELTER IN SECONDS.
- HAVE A PLACE, EVERYONE KNOWS, TO GO TO AFTER THE STORM HAS PASSED.
- FLYING DEBRIS IS THE BIGGEST DANGER DURING A TORNADO. YOUR SHELTER SPACE SHOULD HAVE MATTRESSES OR THICK BLANKETS AROUND, TO PROTECT YOURSELVES.
- DO NOT OPEN YOUR WINDOWS TO TRY & "EQUALIZE THE PRESSURE." THIS ONLY MAKES IT EASIER FOR DEBRIS TO INJURE YOU.
- ALSO, STAY AWAY FROM WINDOWS!

Things to Look and Listen for:

- CONSTANT ROTATION OF THE CLOUDS BASE.
- FLYING/ROTATING DEBRIS UNDER THE CLOUD.
- TORNADOS DON'T ALWAYS HAVE A VISIBLE FUNNEL.
- HEAVY RAIN OR HAIL FOLLOWED BY EITHER BY AN EERIE CALM IN THE STORM OR RAPID WIND CHANGES & SHIFTS.
- LISTEN FOR LOUD, CONTINUOUS RUMBLING WITH NO BREAKS IN IT LIKE THUNDER.

Lightning Distance Tracker



YOU CAN FIGURE OUT HOW FAR AWAY THE LIGHTNING IS FROM YOU LIKE THIS...
 COUNT THE SECONDS IN BETWEEN THE FLASH OF LIGHTNING & THE CRACK OF THUNDER.
 DIVIDE THE NUMBER OF SECONDS BY 5 & YOU HAVE YOUR DISTANCE IN MILES.

0 SECONDS	5 SECONDS	20 SECONDS	60 SECONDS
0 MILES	1.08 MILES	4.35 MILES	13.06 MILES

Do Not Open Your Windows!

ICE SAFETY GUIDELINES:



THERE IS NO SUCH THING AS 100% SAFE ICE!!!

Did you know?

- Ice always forms unevenly. It can be 2 feet thick in one spot, and just a few inches thick a couple feet away.
- The most dangerous ice is formed over flowing water. It's especially dangerous near streams, culverts and bridges. Also, the faster the water is running, usually means the weaker the ice will be.
- Snow insulates the ice and slows the freezing process. The added weight of the snow reduces the strength of the ice. Also, ice that is closer to shore is usually weaker than ice farther out.
- Cracking and rumbling ice isn't always bad. The ice expands and contracts as the temperature rises and falls.
- Fish and birds/wildlife can also effect the ice. Schools of fish can bring warm water from the bottom of lakes, and open holes in seemingly thick ice.
- **ALWAYS BE CAUTIOUS WHEN YOU ARE ON ICE!**



Michigan

LARGEMOUTH & SMALLMOUTH BASS

Catch-and-immediate-release on Lower Peninsula waters, including Great Lakes

Open for Entire Year (2016 & 2017)

Catch-and-immediate-release on Lake St. Clair & St. Clair & Detroit Rivers

Open for Entire Year

Catch-and-immediate-release on Upper Peninsula waters, including Great Lakes

Open for Entire Year

Catch-and-keep on all waters, including Great Lakes

May 28 – December 31 (2016)

May 27 – December 31 (2017)

Catch-and-keep on Lake St. Clair & St. Clair & Detroit Rivers

June 18 – December 31 (2016)

June 17 – December 31 (2017)

MUSKY

Lower Peninsula Great Lakes

Open for Entire Year (2016 & 2017)

Lower Peninsula inland waters

April 30 – March 15 (2016)

April 29 – March 15 (2017)

Upper Peninsula Great Lakes, inland waters & St. Marys River

May 15 – March 15 (2016 & 2017)

Lake St. Clair & St. Clair & Detroit Rivers

June 4 – December 15 (2016)

June 3 – December 15 (2017)

Northern Pike & Walleye

Lower Peninsula Great Lakes, Lake St. Clair & St. Clair & Detroit Rivers

Open for Entire Year (2016 & 2017)

Lower Peninsula inland waters

April 30 – March 15 (2016)

April 29 – March 15 (2017)

Upper Peninsula Great Lakes, inland waters & St. Marys River

May 15 – March 15 (2016 & 2017)

SALMON & TROUT

Great Lakes, Lake St. Clair, St. Marys River, St. Clair & Detroit Rivers

Open for Entire Year (2016 & 2017)

(Inland) Type 3 & 4 streams and Type B, C, E & F lakes

Open for Entire Year (2016 & 2017)

(Inland) Type 1 & 2 streams and Type A & D lakes

April 30 – Sept. 30 (2016)

April 29 – Sept. 30 (2017)

WISCONSIN

Season Dates Inclusive (2017 - 2018 dates in parentheses)

LARGEMOUTH BASS AND SMALLMOUTH BASS

General Inland Waters

Northern Zone - Smallmouth bass catch and release (May 6 – June 16)

Northern Zone - Smallmouth bass harvest (June 17 - March 4)

Northern Zone - Largemouth bass harvest

Southern Zone - Largemouth and smallmouth bass harvest

(May 6 - March 4)

Lake Winnebago System waters Continuous open season

ROCK, YELLOW, AND WHITE BASS

General Inland Waters

Continuous open season

Major Green Bay tributaries

Continuous open season

All other tributaries, streams, rivers and ditches to Green Bay upstream to the first dam or lake

(May 6 - March 4)

CATFISH (CHANNEL AND FLATHEAD)

General Inland Waters

Continuous open season

Duck Creek downstream from the first dam above the Pamperin Park Footbridge in the Village of Howard excluding its tributaries, Fox River downstream from DePere Dam, Suamico River downstream from CTH HS, East River downstream from Hoffman Road (CTH XX), Brown County

Continuous open season

All tributary streams, rivers and ditches to Green Bay upstream to the first dam or lake,

(May 6 - March 4)

Prairie du Sac Dam on Wisconsin River downstream to railroad bridge

(May 6 - November 30)

Lake Winnebago System Waters - channel catfish

Continuous open season

Lake Winnebago System Waters - flathead catfish

(May 6 - September 30)

PANFISH: BLUEGILL, CRAPPIE, PUMPKINSEED, YELLOW

General Inland Waters

Continuous open season

CISCO (LAKE HERRING) AND WHITEFISH

General Inland Waters

Continuous open season

LAKE STURGEON

General Inland Waters

Chippewa River: West Fork downstream from Moose Lake Dam (Sawyer Co.) and East Fork (Ashland Co.)

downstream to the confluence of the Mississippi River (Pepin Co.) including sloughs, bayous, and flowages. Flambeau River: N Fork from Turtle-

Flambeau Dam (Iron Co.) and S Fork (Price Co.)

downstream to the confluence with the Chippewa River (Rusk Co.) including sloughs, bayous, and flowages. Butternut Lake (Price Co.) Jump River

from the North and South Forks to the confluence with the Chippewa River (Rusk Co.); Yellow Lake, Little Yellow Lake, Danbury Flowage, Yellow River

from Yellow Lake downstream to the Danbury Dam (Burnett Co.) Wisconsin River downstream from the Wisconsin Dells Dam

(September 2 - September 30)

Lake Winnebago System Waters

No open season for hook and line harvest

Lake Winnebago - Spearing

(February 11 - February 26 or until harvest cap trigger)

Upriver Lakes (includes Poygan, Wineconne, and Butte des Morts) - Spearing

(participation dependent on random drawing for license purchase) (February 11 - February 26 or until harvest cap trigger)

(February 11 - February 26 or until harvest cap trigger)

(February 11 - February 26 or until harvest cap trigger)

(February 11 - February 26 or until harvest cap trigger)

MUSKELLUNGE

General Inland Waters

Northern Zone - inland waters north of U.S. Hwy 10

(excluding Wisconsin - Michigan boundary waters)

(May 27 - Nov. 30)

Southern Zone - inland waters south of U.S. Hwy 10

(May 6 - Dec. 31)

NORTHERN PIKE

General Inland Waters

(May 6 - March 4)

RUFFE, WHITE PERCH, AND GOBIES

General Inland Waters

No open season, one of each may be killed and possessed for transport to a Wisconsin DNR office

BULLHEADS AND ROUGH FISH

General Inland Waters

Continuous open season

TROUT AND SALMON

General Inland Waters

Early season catch and release

(January 7 - May 5)

General Inland Trout Season

(May 6 - Oct. 15)

SHOVELNOSE STURGEON

General Inland Waters

Wisconsin River downstream from Prairie du Sac dam

Continuous open season

All other inland waters

No open season

WALLEYE AND SAUGER

General Inland Waters

(May 6 – March 4)

Chippewa Flowage (Sawyer County)

(May 6 - November 30)

FREE FISHING WEEKENDS

Summer Free Fishing Weekend

(June 3 - 4, 2017)

Winter Free Fishing Weekend

(January 21-22, 2017)

AREA ATTRACTIONS

Copper Peak

N13870 Copper Peak Rd | Ironwood
906-932-3500

Cranberry Marsh Tours

4 Airport Road | Manitowish Waters
888-626-9877

Deadhorse Lodge

4125 Popkos Cir W | Mercer | 715-544-5851

Dillinger's Hideout

142 US Highway 51 South
Manitowish Waters | 715-543-8800

Eagle River Historical Society

116 S Railroad St | Eagle River | 715-479-9384

Iron County Historical Museum

303 Iron St. | Hurley | 906-265-2617

Ironwood Theatre

1760 U.S. Hwy 395 N | Minden
906-932-0618

Lake of the Torches Casino

510 Old Abe Rd | Lac du Flambeau
715-588-7070

Loon Lagoon

2580 Margaret St | Mercer | 715-476-2466

Minocqua Museum

503 Flambeau St | Minocqua | 715-356-7666

Official Wisconsin Historical Markers

Plummer Mine

Montreal, WI 54550

Root Cellar Resort

N 11071 E Shore Rd | Marenisco
906-842-3535

Waswagoning Indian Village

750 County Road H | Lac du Flambeau Indian
Reservation
715-588-2615

Lake Gogebic Motel & Sled Rental

Highway 28 • P.O. Box 335 • Bergland, MI 49910

Your Host: Casey Yesney • 906-575-3262

Great Rooms • Great Service • Great Value
Direct Access To The
Snowmobile Trail

Lake Gogebic 2 Blocks Away
Snowmobile • Ski • Fish • Hunt
17 Modern Rooms • 1-4 Bed Units
Children 12 & Under Stay Free
Pets Are Welcome



Shop. Dine. Play. Stay.

LOCALLY

and help support businesses throughout your area.

Walmart 
Save money. Live better.

SUPERCENTER

10305 Country Club Road
Ironwood, MI 49911

906-932-0713

www.walmart.com

HUNTING SEASONS (MI)

Cottontail Rabbit and Snowshoe Hare

Sept. 15 - Mar. 31

Crow

Aug. 1 - Sept. 30 and Feb. 1 - Mar. 31

Deer:

Early Antlerless Firearm: Sept. 16-17, 2017

Liberty Hunt: Sept. 16-17, 2017

Independence Hunt: Oct. 13-16, 2016

Archery: Oct. 1 - Nov. 14 and Dec. 1 - Jan. 1, 2016

Regular Firearm: Nov. 15-30, 2016

Muzzleloading:

Zone 1: Dec. 2-11, 2016

Zone 2: Dec. 2-11, 2016

Zone 3: Dec. 2-18, 2016

Late Antlerless Firearm:

Dec. 21, 2015 - Jan. 1, 2016

Dec. 19, 2016 - Jan. 1, 2017

Goose (Early):

Zone 1, and Saginaw, Tuscola, & Huron Counties: Sept. 1-10

Zone 2, 3: Sept. 1-15

Pheasant (male only):

Zone 1 (partial): Oct. 10-31

Zone 2, 3: Oct. 20 - Nov. 14

Zone 3 (partial): Dec. 1 - Jan. 1

Quail

Oct. 20 - Nov. 14

Ruffed Grouse

Sept. 15 - Nov. 14 and Dec. 1 - Jan. 1

Sharp-tailed Grouse

Oct. 10-31

Squirrel - Fox and Gray (black phase included)

Sept. 15 - Mar. 1

Wild Turkey

Spring Season: Apr. 18 - May 31, 2016

Fall Season: Sept. 15 - Nov. 14

Woodcock

Sept. 24 - Nov. 7, 2016

Opossum, porcupine, weasel, red squirrel, skunk, ground squirrel, woodchuck, feral swine, feral pigeons, starling and house sparrows may be taken year-round with a valid Michigan hunting license.

2016 Limited-License Hunt Calendar

Leftover Licenses (On sale at 10am)

Drawing Results are posted online only. Applicants will not be notified by mail.

Spring Wild Turkey

Application Period: January 1 - February 1

Drawing Results Posted Online: March 1

March 8th - Applicants Only

March 15th - Over-the-Counter

Elk

Application Period: May 1 - June 1

Drawing Results Posted Online: June 29

Bear

Application Period: May 1 - June 1

Drawing Results Posted Online: June 29

July 6th - Lifetime License Holders

July 13th - Applicants

July 20th - Over-the-Counter

Fall Wild Turkey

Application Period: July 1 - August 1

Drawing Results Posted Online: August 11

August 18th - Applicants Only

August 25th - Over-the-Counter

Antlerless Deer

Application Period: July 15 - August 15 (youth licenses available over-the-counter)

Drawing Results Posted Online: September 1

Note: Hunters may apply for one public land OR one private land license. If licenses remain after the drawing, they will be sold until the quota is met in each DMU beginning September 8 at 10 a.m.

Reserved Waterfowl

Application Period: August 1 - August 28

Drawing Results Posted Online: September 17

2017 Pure Michigan Hunt

Application Period: March 1 - December 31

Drawing Results Posted Online: January 23, 2017

HUNTING SEASONS (WI)

2016 SEASONS

DEER

Archery and Crossbow - Sept. 17 - Jan. 8, 2017

Gun hunt for hunters with disabilities (This is not a statewide season) - Oct. 1 - 9

Youth deer hunt - Oct. 8 - 9

Gun - Nov. 19 - 27

Muzzleloader - Nov. 28 - Dec. 7

December 4-day antlerless hunt - Dec. 8 - 11

Antlerless only Holiday Hunt *Only in valid farmland units.

Dec. 24 - Jan. 1, 2017

BEAR

Application deadline for bear permits is always December 10.

Zone C where dogs are not permitted

with aid of bait

with all other legal methods not using dogs

Sept. 7 - Oct. 11

All other zones where dogs are permitted

with aid of bait

with all other legal methods not utilizing dogs

Sept. 7 - 13

with aid of dogs

with aid of bait

with all other legal methods

Sept. 14 - Oct. 4

with aid of dogs only

Oct. 5 - 11

SMALL MAMMALS

Cottontail rabbit

Northern zone

Sept. 17 - Feb. 28, 2017

Southern zone

Oct. 15 (9 a.m.) - Feb. 28, 2017

Squirrels (gray and fox) Statewide

Sept. 17 - Jan. 31, 2017

WILD TURKEY

Application deadline for turkey permits is always December 10 for spring and August 1 for fall.

Fall 2016

Zones 1 - 5 Sept. 17 - Dec. 31

Zones 6 & 7 Sept. 17 - Nov. 18

GAME BIRDS

Pheasant

Statewide Oct. 15 (9 AM) - Dec. 31

Bobwhite Quail

Statewide Oct. 15 (9 AM) - Dec. 7

Hungarian Partridge

Statewide* Oct. 15 (9 AM) - Dec. 31

*Closed in Clark, Marathon and Taylor counties

Ruffed Grouse

Zone A Sept. 17 - Jan. 31, 2017

Zone B Oct. 15 - Dec. 8

Sharp-tailed Grouse

Season is under review.

Crow

Statewide Sept. 17 - Nov. 17; Jan. 18, 2017 - Mar. 20, 2017

MIGRATORY BIRDS

Early Canada Goose

Statewide Sept. 1-15

Early Teal Season

Statewide Sept. 1-7

Duck Season

Youth Sept. 17 & 18

Northern Zone Sept. 24 - Nov. 22

Southern Zone Oct. 1 - Oct. 9; Oct. 15 - Dec. 4

Mississippi Zone Oct. 1 - Oct. 7; Oct. 15 - Dec. 6

Regular Goose Season

Exterior Zone - North Sept. 16 - Dec. 16

Exterior Zone - South Sept. 16 - Oct. 9; Oct. 15 - Dec. 4

Mississippi Zone Oct. 1 - Oct. 7; Oct. 15 - Jan. 5

Horicon Zone Sept. 16 - Dec. 16

Woodcock

Statewide Sept. 24 - Nov. 7

Mourning Dove

Statewide Sept. 1 - Nov. 29

FURBEARERS

Coyote

Hunting Continuous open season.

Trapping Oct. 15 - Feb. 15, 2017

Beaver

Trapping Only

Zone A (Northwest) Nov. 5 - Apr. 30, 2017

Zone B (Northeast) Nov. 5 - Apr. 30, 2017

Zone C (South) Nov. 5 - Mar. 31, 2017

Zone D (Mississippi River) Day after duck season closes to Mar. 15, 2017

Mink and Muskrat

Trapping Only

Statewide Oct. 22 - Mar. 5, 2017

Mississippi River Zone Nov. 14** - Mar. 5, 2017

**Zone opens either the day after the duck season closes or Nov. 14, whichever occurs first.

Fox (Red and Gray)

Hunting and Trapping Oct. 15 - Feb. 15, 2017

Bobcat

Hunting and Trapping - Permits required

Period 1 Oct. 15 - Dec. 25

Period 2 Dec. 26 - Jan. 31, 2017

Fisher

Trapping Only - Permits required

Various zones Oct. 15 - Dec. 31

Otter

Trapping Only - Permits required

North Zone Nov. 5 - Apr. 30, 2017

Central Zone Nov. 5 - Mar. 31, 2017

South Zone Nov. 5 - Mar. 31, 2017

Raccoon

Hunting and Trapping

Resident Oct. 15 - Feb. 15, 2017

Non-resident Oct. 29 - Feb. 15, 2017

Opossum, Skunk, Weasel and Snowshoe Hare

No season limits, bag limits, size limits or possession limits, but a license is required.

All dates are subject to change through a rule making or a legislative process. Please check the 2016 Wisconsin Deer Hunting Regulations for a complete set of dates and unit designations at dnr.wi.gov.

*You can purchase hunting and fishing licenses, cross-country ski passes and snowmobile trail stickers through the Electronic License System.
Online: dnr.wi.gov, Toll Free: 1 (888) 936-7463 or visit one of the
ELS agents available throughout your County:*

ARBOR VITAE

The Store
11085 Hwy 70 E | Arbor Vitae | 715-358-6870

BESSEMER

Stempihar, Inc
117 E Lead St | Bessemer | 906-667-0406

The Pit Stop

120 S Sophie St | Bessemer | 906-229-5373

BOULDER JUNCTION

Coontail Corner
5466 Park St | Boulder Junction | 715-385-2582

Dairymen's

10750 Dairymen's Rd | Boulder Junction
715-385-9363

Northern Highland Sports

10369 Main St | Boulder Junction | 715-385-2134

CONOVER

Northern Waters Angling & Archery
160 Hwy 45 | Conover | 715-477-2224

EAGLE RIVER

Eagle River Tobacco Road
667 Hwy 45 S | Eagle River | 715-479-6555

Eagle Sports

702 E Wall St | Eagle River | 715-479-8804

Guide's Choice Pro Shop

4315 E Wall St | Eagle River | 715-477-2248

Holiday Stationstore

928 N Railroad St | Eagle River | 715-479-3473

Holiday Stationstore

226 S Railroad St | Eagle River | 715-479-1816

R & M Musky Shop LLC

5196 State Hwy 70 | Eagle River | 715-477-1177

Shopko Hometown

810 N Railroad St | Eagle River | 715-479-6878

Vilas County Clerk

330 Court St | Eagle River | 715-479-3602

Wild Eagle Corner Store

1970 N Hwy 45 | Eagle River | 715-479-4688

HURLEY

Cary Mine Convenience
603 Cary Rd | Hurley | 715-561-2995

Giovanoni True Value Hardware
303 Silver St | Hurley | 715-561-4141

Iron County Clerk

300 Taconite Suite 101 | Hurley | 715-561-3375

Midland Services

501 Hwy 51 N | Hurley | 715-561-3459

Town & Country Liquor & Gas

13321 N Hwy 51 | Hurley | 715-561-3252

IRONWOOD

Dunhams
1440 E Cloverland Dr | Ironwood | 906-932-0990

Holiday Stationstore

805 E Cloverland Dr | Ironwood | 906-932-1128

K-Mart

1400 E Cloverland Dr | Ironwood | 906-932-9966

Wal-Mart Supercenter

N10305 Country Club Rd | Ironwood | 906-932-0713

LAC DU FLAMBEAU

Bill & Linda's Bait & Tackle
14267 Hwy 70 W | Lac du Flambeau | 715-588-3146

YMCA Camp Nawakwa

13400 Camp Nawakwa Ln | Lac du Flambeau
715-588-7422

LAND O' LAKES

Gateway 76 Inc
4072 Co Rd E # B | Land O' Lakes | 715-547-3796

The Tackle Box

4267 Hwy B | Land O' Lakes | 715-547-3434

MANITOWISH WATERS

Dietz's Service Inc
160 Hwy W. 6096 | Manitowish Waters
715-543-2144

Greers Pier

5536 Hwy 51 | Manitowish Waters | 715-543-8456

Sportsmen's Outpost

5678 Hwy 51 | Manitowish Waters | 715-543-8336

Townline Sports

5198 Hwy 51 | Manitowish Waters | 715-543-2371

MARENISCO

Bears Nine Pines Resort
N9426 State Hwy M64 | Marenisco | 906-842-3361

Gogebic Grocery

N9456 State Hwy M64 | Marenisco | 906-842-3322

Gogebic Lodge Ltd.

N9600 State Hwy M64 | Marenisco | 906-842-3321

MERCER

ICO Convenience Plus
5256 N Hwy 51 | Mercer | 715-476-3639

Northern Pantry Mercer

5247 N Hwy 51 | Mercer | 715-476-3437

Turtle River Trading Company

5227 N Hwy 51 | Mercer | 715-476-0123

PARK FALLS

Springstead Trading Post

3533 W Hwy 182 | Park Falls | 715-583-2201

PHELPS

Immels Bait Shop

3296 Hwy E | Phelps | 715-547-3979

Phelps Convenience Store

2518 Hwy 17 | Phelps | 715-545-2625

PRESQUE ISLE

Thomas Mini Mart

11610 Co Rd B | Presque Isle | 715-686-2480

Zastrow's Up North Sport N' Gifts

8301 Main St Co Rd B | Presque Isle | 715-686-2636

SAXON

Saxon Pub & Archery

14827 Hwy 122 S | Saxon | 715-893-2228

SAYNER

Up North Traders

325 Main St | Sayner | 715-542-2046

ST. GERMAIN

Little Saint Express Mart

102 Hwy 70 | St. Germain | 715-479-2141

Ray's Landing

544 Hwy 155 | St. Germain | 715-542-4642

St. Germain Sport Marine

430 Hwy 70 | St. Germain | 715-479-4930

STAR LAKE

Star Lake Store

7851 Co Rd K | Star Lake | 715-542-3464

WAKEFIELD

Holiday Stationstore

215 W Hwy 2 | Wakefield | 906-224-2191

WATERSMEET

Gateway 76 Inc

N1701 Hwy 45 | Watersmeet | 715-547-3796

Headwaters Polaris

N4705 Hwy 45 | Watersmeet | 906-358-8888

Jay's Resort

E19848 Thousand Island Lake Rd | Watersmeet

906-358-4300

Nordine Foodland Inc

4574 Hwy2 & 45 | Watersmeet | 906-358-4717

Sylvania Outfitters

E23423 Hwy 2 | Watersmeet | 906-358-4766

Wilderness Bay Resort

E20060 Thousand Island Lake Rd | Watersmeet

906-358-9956

Agate Falls Scenic Site

N9995 State Hwy M-64

Marenisco, MI 49947

906-353-6558

Agate Falls Scenic Site features a beautiful waterfall and an area for picnics.

Indianhead Mountain Ski Area

500 Indianhead Rd

Wakefield, MI 49968

800-346-3426

Indianhead Mountain Ski Area features comfortable resorts and trails for any level skier.

Lake Evelyn State Natural Area

Co Hwy G, Mercer, WI 54547

888-936-7463

Lake Evelyn State Natural Area features a 55-acre lake with moderate clarity and good quality fishery.

Lake Gogebic State Park

N 9995 State, Hwy M-64

Marenisco, MI 49947

906-842-3341

Lake Gogebic State Park features 127 campgrounds a 2-mile trail and a large variety of activities to choose from.

Lake of the Falls County Park

4720W County Park Rd.

Mercer, WI 54547

715-561-2697

Lake of the Falls County park features 3 camping areas and lake access through public lands and parks.

Turtle-Flambeau Scenic Waters Area

5291 State House Circle

Mercer, WI 54547

715-476-7846

Turtle-Flambeau Scenic Waters Area features 66 campsites accessible by water only, and has trails, a quiet area and room to hunt and fish.

North Lakeland Discovery Center

Highway W

Manitowish Waters, WI 54545

877-543-2085

North Lakeland Discovery Center features a large amount of undeveloped land and has over 20km of trails to explore.

Northwoods Children's Museum

346 W Division St.

Eagle River, WI 54521

715-479-4623

Northwoods Children's Museum features 24 exhibits for children and adults to interact with and learn from.

Trees for Tomorrow

519 Sheridan St.

Eagle River, WI 54521

715-479-6456

Trees for Tomorrow is a nonprofit speciality school that teaches the management of trees and forests and develops knowledge and skills relating to lifestyle decisions.

Operating Watercraft

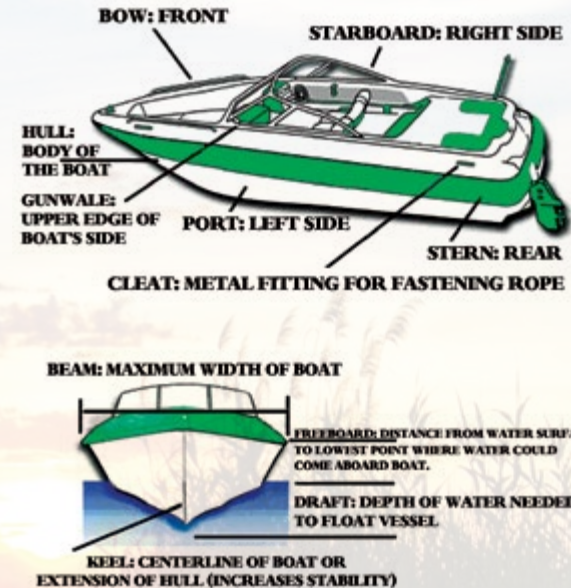
FOLLOW THESE GUIDELINES TO HELP PREVENT AND PREPARE FOR CAPSIZING, SWAMPING, OR SOMEONE FALLING OVERBOARD.

- MAKE SURE THAT YOU AND YOUR PASSENGERS ARE WEARING LIFE-JACKETS WHILE THE BOAT IS MOVING.
- ATTACH THE IGNITION SAFETY LANYARD TO YOUR WRIST, CLOTHES, OR LIFE JACKET.
- DON'T ALLOW ANYONE TO SIT ON THE GUN WALE, BOW, SEAT BACKS, MOTOR COVER, OR AREAS NOT DESIGNED FOR SEATING. ALSO, DON'T LET ANYONE SIT ON PEDESTAL SEATS WHEN CRAFT IS NOT IN IDLE.
- DON'T OVERLOAD YOUR BOAT. BALANCE THE LOAD OF PASSENGERS AND GEAR STORED ON-BOARD.
- KEEP YOUR CENTER OF GRAVITY LOW BY NOT ALLOWING PEOPLE TO STAND UP OR MOVE AROUND WHILE CRAFT IS IN MOTION.
- IN SMALL BOATS, DON'T ALLOW ANYONE TO LEAN BEYOND THE GUNWALE.
- TURN BOAT AT SLOW RATES OF SPEED.
- SECURE THE ANCHOR LINE TO THE BOW, NEVER TO THE STERN.
- DON'T RISK OPERATING WATER CRAFT IN ROUGH CONDITIONS OR BAD WEATHER.

Who May Operate a Motorboat

(OTHER THAN A PERSONAL WATERCRAFT)

- **FOR ENGINES 25 HORSEPOWER OR LESS:**
 - THOSE UNDER AGE 12 MAY OPERATE WITHOUT RESTRICTIONS.
- **FOR ENGINES OVER 25 HORSEPOWER THROUGH 75 HORSEPOWER:**
 - THOSE UNDER AGE 12 MUST HAVE SOMEONE 21 YEARS OF AGE OR OLDER ON BOARD WITHIN REACH OF THE CONTROLS.
- **FOR ENGINES OVER 75 HORSEPOWER:**
 - NO CHILDREN UNDER AGE 12 MAY OPERATE, EVEN WITH AN ADULT ON BOARD.
 - OTHER RESTRICTIONS APPLY TO BOAT OPERATORS 12 TO 17 YEARS OLD:
 - OPERATORS FROM 12 TO 17 YEARS OF AGE MAY OPERATE ENGINES OF 25 HORSEPOWER OR LOWER WITH NO RESTRICTIONS.
- **FOR ENGINES OVER 25 HORSEPOWER:**
 - OPERATORS 12 TO 17 YEARS OF AGE MUST HAVE: A WATERCRAFT OPERATOR'S PERMIT, OR SOMEONE AGE 21 YEARS OR OLDER OLD ON BOARD WITHIN REACH OF THE CONTROLS.



All Watercraft Must Have...

- AT LEAST ONE COAST GUARD APPROVED TYPE 1, 2, 3 OR 5 FLOTATION DEVICE THAT IS THE PROPER SIZE FOR EACH PERSON ON BOARD OR BEING TOWED.
- ALL DEVICES MUST BE IN GOOD CONDITION AND EASILY ACCESSIBLE.
- CHILDREN UNDER AGE 10 MUST WEAR A DEVICE WHEN ON BOARD A BOAT THAT IS UNDERWAY UNLESS:
 - IN AN ENCLOSED CABIN OR BELOW DECK OR ON AN ANCHORED BOAT THAT IS BEING USED FOR SWIMMING OR DIVING OR PASSENGER CRAFT WITH A LICENSED CAPTAIN.
- ALONG WITH THE ABOVE AT LEAST ONE APPROVED TYPE 4 MUST BE ON BOARD BOATS 16 FT. OR LONGER (EXCEPT CANOES AND KAYAKS) AND IMMEDIATELY AVAILABLE.
- A COAST GUARD APPROVED TYPE 5 DEVICE MAY BE SUBSTITUTED FOR ANY OTHER COAST GUARD APPROVED DEVICE IF IT MEETS THE SAME REQUIREMENTS AND IS NOTED ON THE LABEL.
- ANYONE RIDING A JET SKI OR OTHER PERSONAL WATER CRAFT MUST WEAR AN APPROVED -NON INFLATING FLOTATION DEVICE, AS WELL AS ANYONE BEING TOWED BY A WATER CRAFT.

Bicycle Hand Signals



Snowmobile Hand Signals

Communication is an essential part of safe riding. Hand signals are a practical way to communicate between other riders and traffic. Be sure to give easy to see and clear hand signals when snowmobiling. Hand signals should never be subtle, but always deliberate.

Right Turn 	Slowing
Stop 	Sleds Following
Left Turn 	Last Sled in Line
Oncoming Sleds 	



Read the owner's manual

and know your vehicle thoroughly.

- Check your vehicle before you ride.
- Wear protective equipment and clothing.
- Don't lend your vehicle to unskilled riders.
- Supervise young or inexperienced riders.
- Never carry a passenger on vehicles meant for one rider.
- Do not operate under the influence of drugs or alcohol.
- Drive at speeds that are appropriate to trail conditions.
- Stay to the right on trails.
- Stay away from thin ice, open water and wetlands.
- Know the weather forecast.
- Make sure headlights and taillights work properly.
- Maintain safe distances between other riders.
- Reduce your speed when riding at night.
- Yield to other motor vehicles and trail users.
- Young or beginning riders are encouraged to take a safety training course.

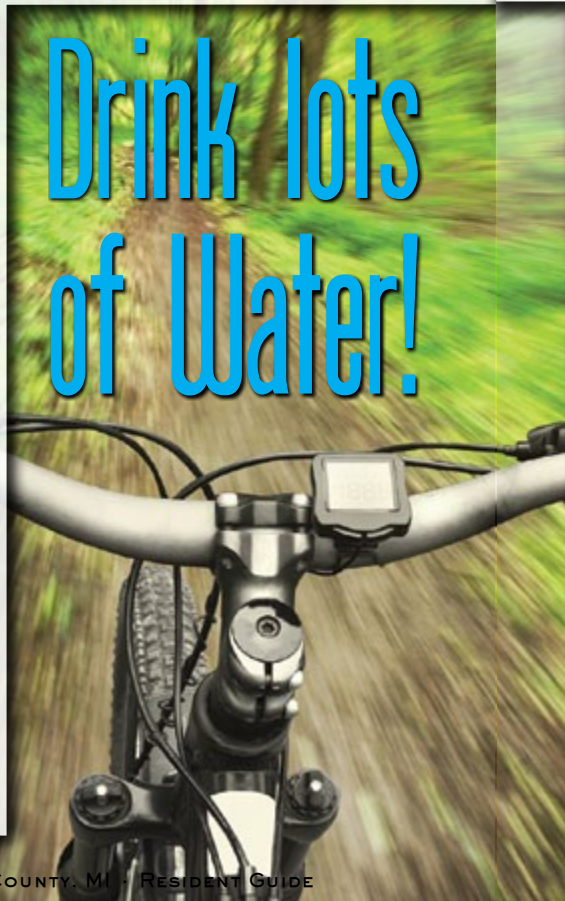
Know Your ATV



Be Cautious of Other Bikers

- Always wear a properly fitting bike helmet as most serious injuries are to the head.
- Be sure your handlebars, seat and wheels fit snugly.
- Keep your bike in good shape by checking and oiling your chain, making sure your brakes work properly and maintaining your tire pressure.
- Always ride with both hands on the handlebars except when doing turn signals.
- When leaving a driveway, curb or alleyway always stop and check for traffic in both directions.
- Cross only at intersections.
- Use the crosswalk to walk your bike across busy intersections and follow the traffic signals.
- Never ride against traffic. Travel in the same direction as the cars.
- Whenever you can, use bike routes and avoid busy streets.
- Don't ride near parked cars as doors can open and cause accidents.
- Obey all traffic signs and traffic lights.
- When biking with friends, ride in a single file.
- Always pass other bikers or pedestrians on the left and say "On your left!" to make your presence known.
- Always use bicycle hand signals to alert traffic of your changing direction.

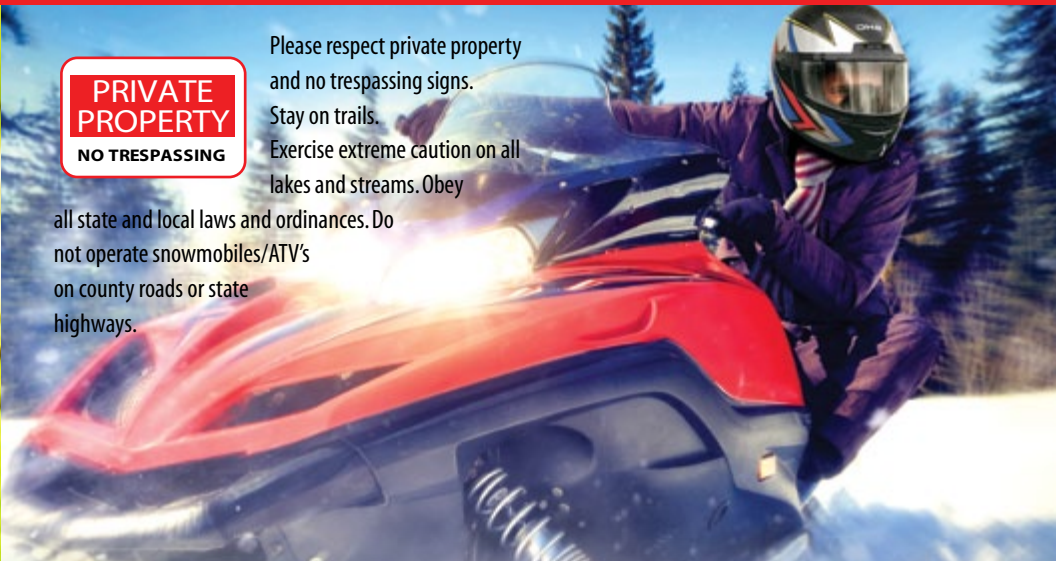
Drink lots of Water!



SNOWMOBILE SAFETY

PRIVATE PROPERTY
NO TRESPASSING

- Please respect private property and no trespassing signs.
- Stay on trails.
- Exercise extreme caution on all lakes and streams. Obey all state and local laws and ordinances. Do not operate snowmobiles/ATV's on county roads or state highways.



- Do not consume alcohol or take drugs prior to or during your snowmobile trip. Doing so increases your chances of injury or death.
- Slow down and don't cut to the inside of the trail corners. It's dangerous and illegal.
- If you snowmobile at night, don't override your lights.
- Always use the buddy system. Never ride off alone.
- Drowning is one of the causes of many snowmobile fatalities. Whenever possible, avoid the ice.
- Wear sensible, protective clothing designed for operating a snowmobile.
- Use a full size helmet, goggles, or visor to prevent injuries from twigs, stones, ice chips and other debris.
- Avoid wearing long scarves. They may get caught in moving parts of the snowmobile.
- Know the terrain you are going to ride. If unfamiliar to you, ask someone who has traveled over it before.
- Know the weather forecast, especially the ice and snow conditions.
- Be sure your snowmobile is in top-notch mechanical condition throughout the months of use.
- Familiarize yourself with the snowmobile you are driving. Thoroughly read the manual that accompanies the snowmobile.
- Do not pursue domestic or wild animals. That is not the conduct of a sportsman. Report such violations to the nearest law enforcement officer.

Slow Down!

Snowmobiling is fun. Going to the hospital isn't.

LOCAL AREA TRAILS

Gogebic County, MI

North Pole Tavern



Open 7 Days a week at 11:00 a.m.
Serving your favorite food and beverages

3.5 miles South of Hurley on Hwy. 51
4934 W. Center Drive
Hurley, WI 54534 (715) 561-5116



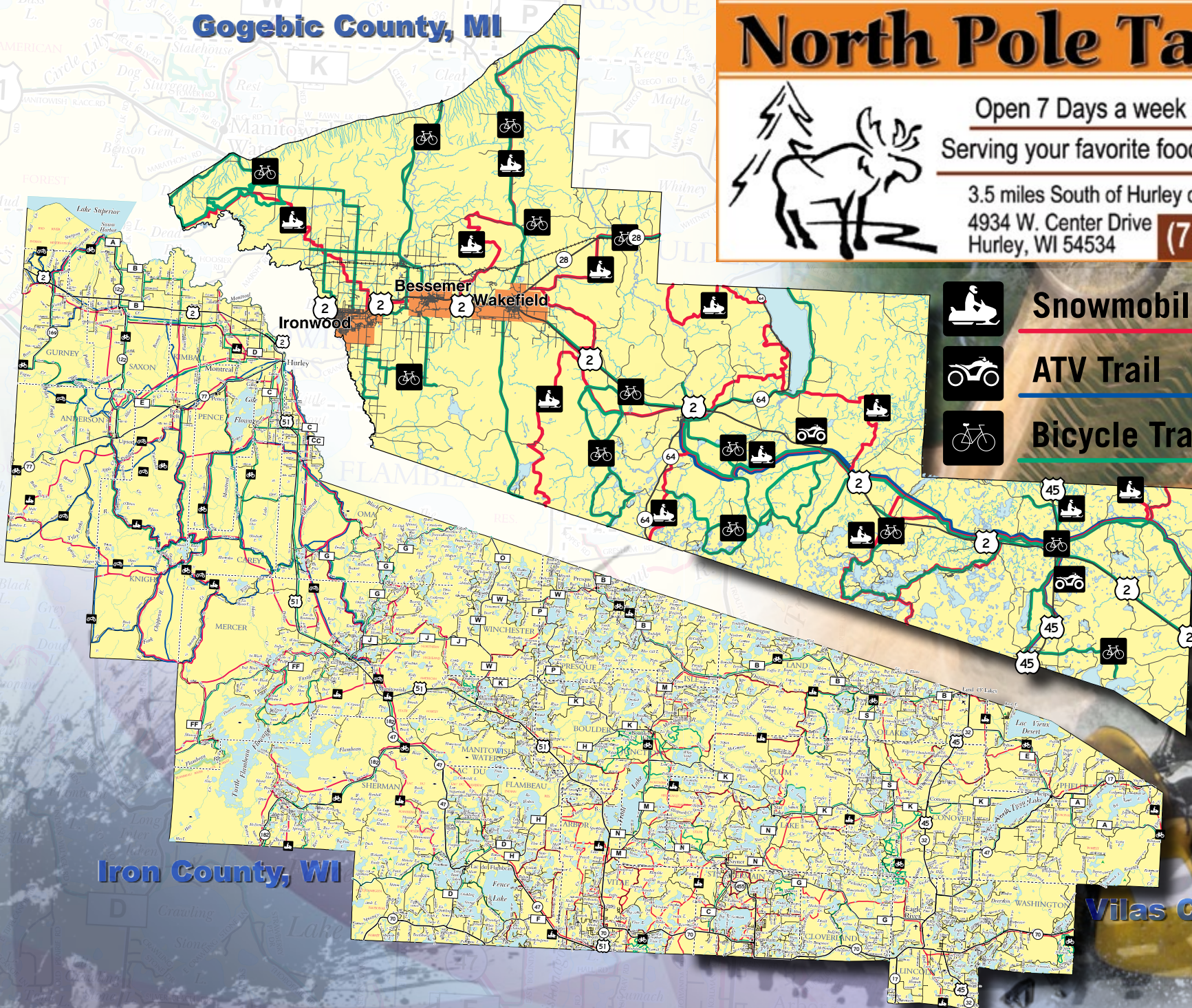
Snowmobile Trail



ATV Trail



Bicycle Trail/Route



Iron County, WI

Vilas County, WI

10 Tips for Green Thumb GARDENING

Don't like all the dirt in your fingernails while you work in the garden? Before you go out, run your fingernails across a bar of soap and you'll effectively seal the undersides of your nails so dirt cannot accumulate. Then, after you are all done gardening, use a toothpick or nailbrush to remove the soap and your nails will be sparkling clean.



Spray vegetable oil on your string trimmer to help prevent jamming or breaking (Treat before installing string in trimmer).



Make a convenient measuring tool out of a long handled garden tool by laying it on the ground next to a tape measure. Use a permanent marker to copy the inches and feet. Next time you are spacing plants you already have a dual-purpose measuring tool in your hand!

Write the names of your plants (with a permanent marker) on the flat parts of stones of any size and lay them in front of your plants for natural looking markers.



The next time you boil or steam vegetables, use the leftover water to water potted patio plants, and you'll be surprised at how the plants grow with "vege-soup."



You can use leftover tea and coffee grounds to help acidify the soil of acid-loving plants like azaleas, rhododendrons, camellias, gardenias and blueberries. A light sprinkle of about 1/4 of an inch applied once a month will help keep the pH of the soil on the acidic side.



You can use chamomile tea to control damping-off fungus, which often attacks young seedlings quite suddenly. Just add some tea to the soil around the soil of seedlings once a week for healthy plant.



Here is a really quick way to dry out your herbs: Just lay a sheet of newspaper on the seat of your car, arrange the herbs in a single layer, then roll up the windows and shut the car doors. Your herbs will be dry in no time!



Use your blender to grind up egg shells. Just like a mother bird chews up worms for the baby birds making the food easier to digest, grinding eggshells makes it easy for your garden to absorb the calcium egg shells retain.



Animals (cats especially) seem to think all of the hard work you've put into your garden looks like a huge litter box. To keep them from pooping on your basil and other plants, strategically place a few plastic forks around your plants to deter them from destroying your fresh herbs, fruits, and vegetables.



PARENTS:

- Teach your kids that an emergency is when you need help from a doctor, a police officer or a firefighter.
- Designate a safe place by your house that a child can go to if they need help right away.
- Have your kids memorize your address and phone numbers. They should also know your full name and where you work.

KIDS:

FIRE SAFETY

- If you or someone else is on fire - remember to STOP, DROP and ROLL. Wrap a blanket on the person to help put out the fire.
- If there is a fire, leave the house as fast as you can! Crawl on the floor to avoid smoke and if the door is hot, don't open it - find another way out.
- Learn all the fire exits in your house. Assign a safe place outside for everyone to meet in case of a fire emergency.

HOME ALONE

- Never tell anyone that you are home alone.
- If someone calls and asks for your mom and dad, tell them "They cannot come to the phone right now, can you please call back later?"
- Do not answer the door, unless it is someone that you know your parents have okay'd them to come over.



FIRST AID FOR INSECT BITES/ANAPHYLAXIS & POISON SAFETY

INSECT BITES/ANAPHYLAXIS

Anaphylaxis is a severe allergic reaction from insect bites (latex, food and drug allergies can also cause Anaphylaxis). Typical symptoms include hives, the swelling of lips or eyes, swollen throat, drop in blood pressure, light headedness, confusion, nausea or diarrhea. If someone is having an allergic reaction from an insect bite seek medical attention immediately.

POISON PREVENTION

Teach your children about poison and how it can look like a food or drink. They should always ask an adult before eating or drinking anything. Have them learn the poison control phone number: 1-800-222-1222 and keep it programmed or posted near all your phones. Here are some prevention tips.

Lock up your poisons and medications. Keep them out of the reach of children, lock them up if possible. Make sure your children understand that medicine is not candy.

Follow directions carefully. Read your labels. Be sure to use and store all poisons and medications properly according to recommendations.

Keep your pets safe from household chemicals, too. Don't allow pets near areas that have just been cleaned with chemicals, such as freshly mopped floors or bleached bathtubs and sinks. Clean up any anti-freeze/coolant spills. Pets like the flavor but they can die if they ingest it. Store poisonous foods or plants in areas that your pets cannot access. Call your local emergency veterinary hospital if you believe your pet has been poisoned.



FIRST AID FOR BURNS & CHOKING

BURNS

For minor 1st and 2nd degree burns smaller than 3" in diameter: Cool the Burn. Run cool water over the burned area for 5 minutes, or until the pain diminishes. Never put ice on a burn!

Bandage the burn with sterile gauze:

It is important to use loosely wrapped gauze. This will avoid pressure and the bandage protects blisters. NEVER put lotions, vaseline, ointments or butter on burn. Do not break any blisters, which can cause infection.

Take Aspirin, Ibuprofen, Naproxen or Acetaminophen to relieve pain:

Minor burns usually heal with these basic treatments. Be aware for signs of infection which may include: increased pain, redness, fever, swelling or oozing. If symptoms develop, seek medical help. Avoid tanning the burned area for at least a year. Protect the area with sun-screen outdoors. Avoid giving aspirin to children.

For 3rd degree burns/all major burns - DIAL 911

DO NOT run cold water over large severe burns - this can cause shock.

DO NOT remove burnt clothing.

Check for signs of breathing/coughing/movement.

If there are no signs of breathing begin CPR.

Elevate burned areas above heart level, if possible.

Cover the burn(s) with cool, sterile, moist bandages, towels or cloth.

CHOKING

Most people clutch at their throats when choking, an obvious symbol for help. However, if a person isn't giving that signal, be alert for these indications. Inability to talk, difficulty breathing or noisy breathing, inability to cough forcefully, skin/lips/nails turning blue, loss of consciousness.

The Red Cross recommends a "five-and-five" method for first aid: First give five blows between the person's shoulders with the heel of your hand. Second, perform the Heimlich maneuver (abdominal thrusts) five times. Alternate between five back blows and five abdominal thrusts until the blockage is dislodged.



IN AN EMERGENCY, DIAL 911

Shop • Dine • Play • Stay



LOCALLY

...and support
the community
you live in!

you live in!
the community
you live in!