

Cass County & Leech Lake with Lake Depths, Minnesota

FREE MAP INCLUDES TRAILS



Northern Star

Cooperative Services

Buy or lease a bulk tank from us.
Located 4 miles North on Hwy 371
24 hour service

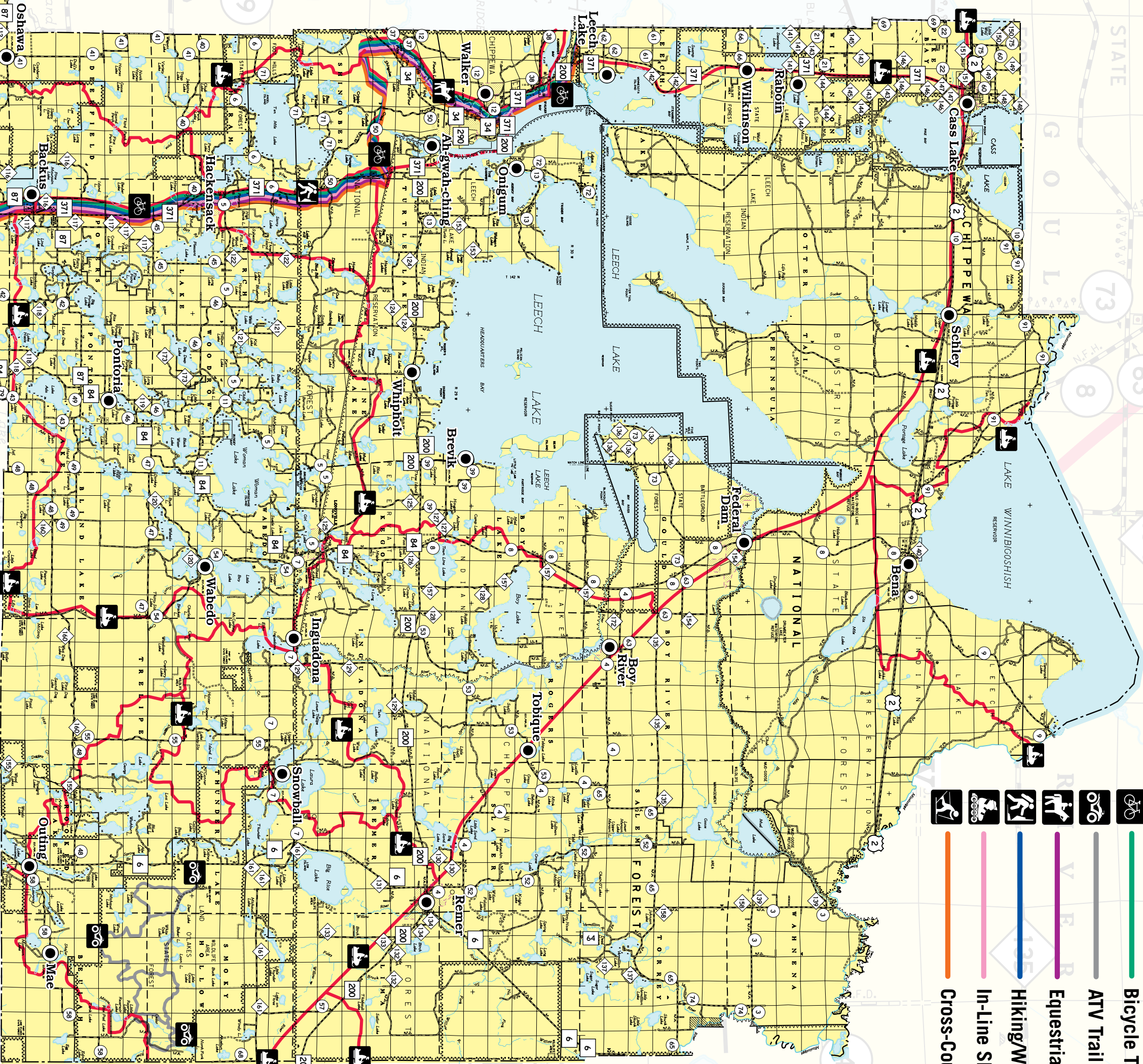
Art Hamlin - Plant Manager

Propane Gas
Walker 218-547-1688 or 1-800-490-1688

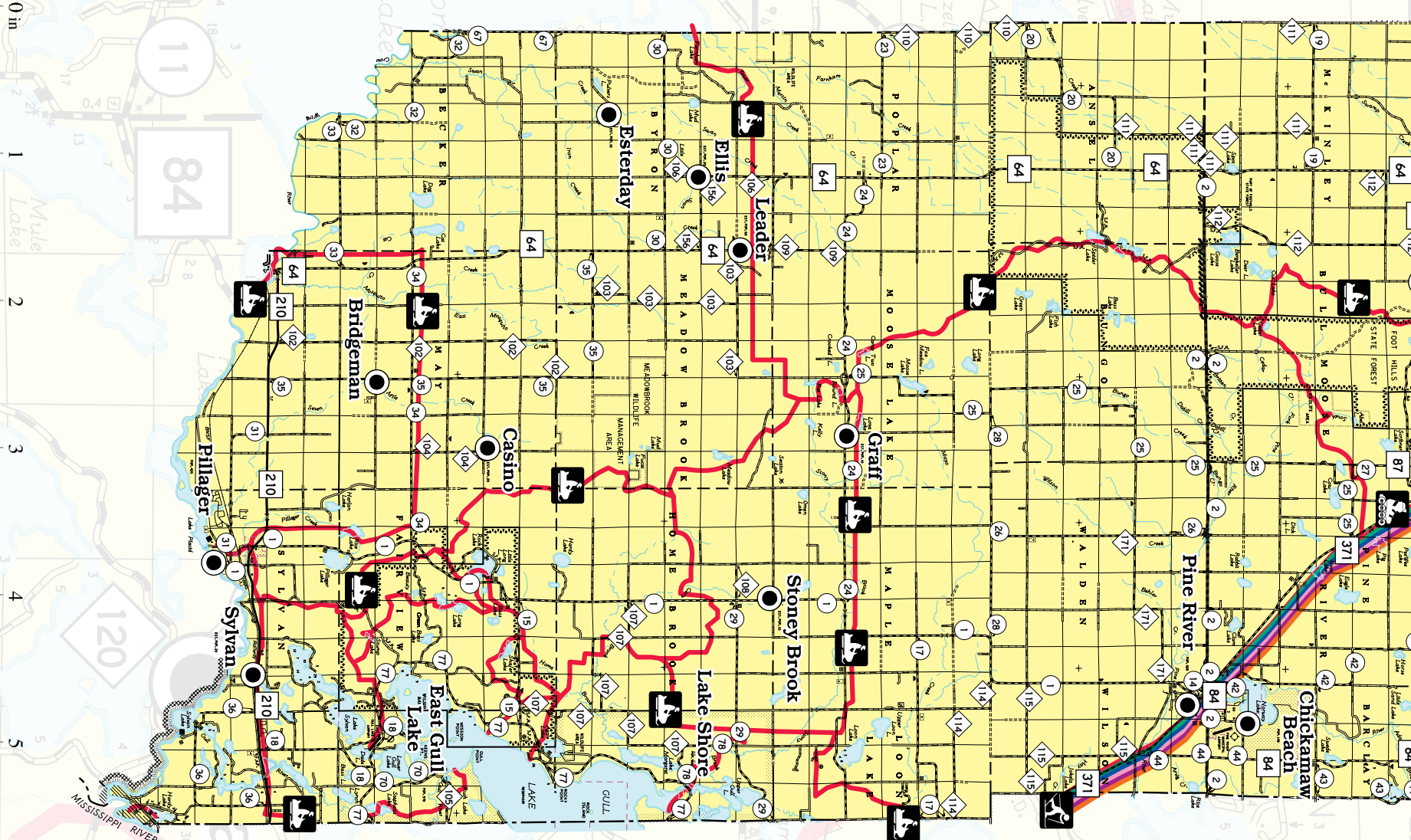
We Provide

- 24 hour service by Certified Gas Technicians •
- Prompt Service • Competitive Rates •
- Low Commercial Rates •
- Cash Dividends Paid Back Annually •

CASS COUNTY



- Snowmobile Trail
- Bicycle Trail/Route
- ATV Trail
- Equestrian Trail
- Hiking/Walking Trail
- In-Line Skating
- Cross-Country Ski Trail



Christensen FOREST PRODUCTS
Spring On In For All Your Improvement Needs.
www.christensenforestproducts.com
Pine River, MN

- Hardwood Flooring
- Treated Deck Material
- 7 Types of Mulch
- 6 Species of FRG
- Melting/Tim
- 1/2 Log Sliding
- Custom Beams

Roll Price: 800.650.5961 • Leech: 218.537.1869

WEIGH YOUR FISH WITH A RUDER

To avoid damaging your fish, use this chart to determine its approximate weight. Please note, these are estimates only, as actual fish weights may vary slightly by lake or stream.

| CAVAYE | WANGSNOTH | WALLEYE | NORTHERN |
|---------------|---------------|---------------|---------------|
| length (inch) | length (inch) | length (inch) | length (inch) |
| weight (lb) | weight (lb) | weight (lb) | weight (lb) |
| 8 0.3 | 12 1.0 | 14 1.0 | 24 3.2 |
| 10 0.6 | 13 1.3 | 15 1.2 | 25 3.6 |
| 11 0.8 | 15 2.1 | 17 1.8 | 27 4.6 |
| 12 1.1 | 16 2.5 | 18 2.2 | 28 5.2 |
| 13 1.4 | 17 3.0 | 19 2.5 | 29 5.8 |
| 14 1.8 | 18 3.6 | 20 3.0 | 30 6.4 |
| 15 2.2 | 19 4.2 | 21 3.5 | 31 7.1 |
| 16 2.7 | 20 5.0 | 22 4.1 | 32 7.8 |
| 17 3.3 | 21 5.7 | 23 4.7 | 33 8.6 |
| | 22 6.6 | 24 5.4 | 34 9.4 |
| | 23 7.6 | 25 6.1 | 35 10.3 |
| | | 26 6.9 | 36 11.2 |
| | | 27 7.8 | 37 12.2 |
| | | 28 8.8 | 38 13.3 |
| | | 29 9.8 | 39 14.4 |
| | | 40 15.6 | 41 16.8 |
| | | 42 18.1 | |

If You're Buying or Selling In The Lakes Area... Call



MARK TIETJEN
(218) 536-0008

of Rusty's Up North Realty

View All Of Our Listings At

www.UpNorthRealtyMN.com
Mark@UpNorthRealtyMN.com

RIDE SMART. RIDE SAFE. RIDE POLARIS.

DOMINION | POLARIS
TERRAION | TERRAION | POLARIS

Horseshoe Bay Lodge
SOMER BY CAR
BOAT RENTALS
BOAT TRIPS
BOAT RENTALS

Andersens Horsehoe Bay Lodge & Restaurant
800-873-1229

NEWS TALK 3WI
AM 1270
FM 95.9
218-828-9994
www.3wivradio.com

JOIN
Lon Schmidt
And Jimmy V on the
"Eye Opener Morning Show"
Monday - Friday 6am to 9am
and
"The Back Porch"
Thursday 6am to 9am

Your Chance To Talk.

SPENCER ROSS POST #134
AMERICAN LEGION
OPEN TO THE PUBLIC

- Food
- Meat Raffles
- Bingo
- Game Room
- Pull Tabs
- Hall Rental for Weddings, Receptions, Meetings, Catered Banquets, Etc.

407 FRONT ST. • WALKER, MN • (218) 547-1011

SAWYER TIMBER CO. LLP
- Owners -
William, Tyler & Justin Sawyer
Shop/Office 218-947-4032
Fax 218-947-4041

Backus, Minnesota

WELCOME TO CASS COUNTY...

WesternBank
"We Make It Happen"
www.wbcasslake.com
218-335-4131
210 Second Street NW
Cass Lake, Minnesota

Play Here • Work Here • Live Here

Hagen Flooring, LLC
Serving the Park Rapids Area For Over 20 Years

Residential • Commercial
Floor Specialist • Sales
Service • Carpet • Vinyl
Tile • Laminate • Wood

Call Rob • 218-252-6088

LincolnMarketing
Support Your Local Merchants
Scan The QR Code
For Free Online Coupons

SCAN THE CODE TO DOWNLOAD A FREE COPY OF THIS MAP
or questions may be directed to: info@lincolnmarketing.us

Cass County & Leech Lake with Lake Depths, Minnesota



RIDE SMART. RIDE SAFE. RIDE POLARIS.

TERAATIN POLARIS
 DOMINANT
 The World's Most Versatile Snowmobile

Christensen FOREST PRODUCTS
 Spring On In For Home Improvement Needs.
 Pine River, MN
 www.christensenforestproducts.com

- Hardwood Flooring
- Treated Deck Material
- 7 Types of Mulch
- 6 Species of 1x6
- Molding Trim
- 1/2 Log Siding
- Custom Beams

Toll Free: 800.650.5861 • Local: 218.557.4899

Horseshoe Bay Lodge
 COME BY CAR OR BY BOAT TO ENJOY THE BEAUTY OF LAKE DEPTHS

Open Daily 11:00am Daily Lunch & Dinner Specials
 Serving 7 Days A Week - Mid-May through September
Horseshoe Bay Lodge & Restaurant
 800-873-1229
 www.horseshoebayresort.com • horseshoebay@rvnj.net
 218-557-2066 per Cass County Ordinance 12, 12 miles to E. of Leech Lake

COME BY CAR OR BY BOAT TO ENJOY THE BEAUTY OF LAKE DEPTHS

FAMILY DINING
 FULL SERVICE RESTAURANT
 BAR & CATERING

LEON TREES
 Banquet facilities for up to 175
 Lakeside Dining

Sawyer Timber Co. LLP
 Owners - William, Tyler & Justin Sawyer
 Shop/Office 218-947-4032
 Fax 218-947-4041
 Backus, Minnesota

WE ARE HIRING
 LOG SKIDDER
 LOG SKIDDER
 LOG SKIDDER

WELCOME TO CASS COUNTY...

WesternBank
 "We Make It Happen"

www.wbcasslake.com
 218-335-4131
 210 Second Street NW
 Cass Lake, Minnesota
 Play Here • Work Here • Live Here

CENEX

Northern Star
 Cooperative Services

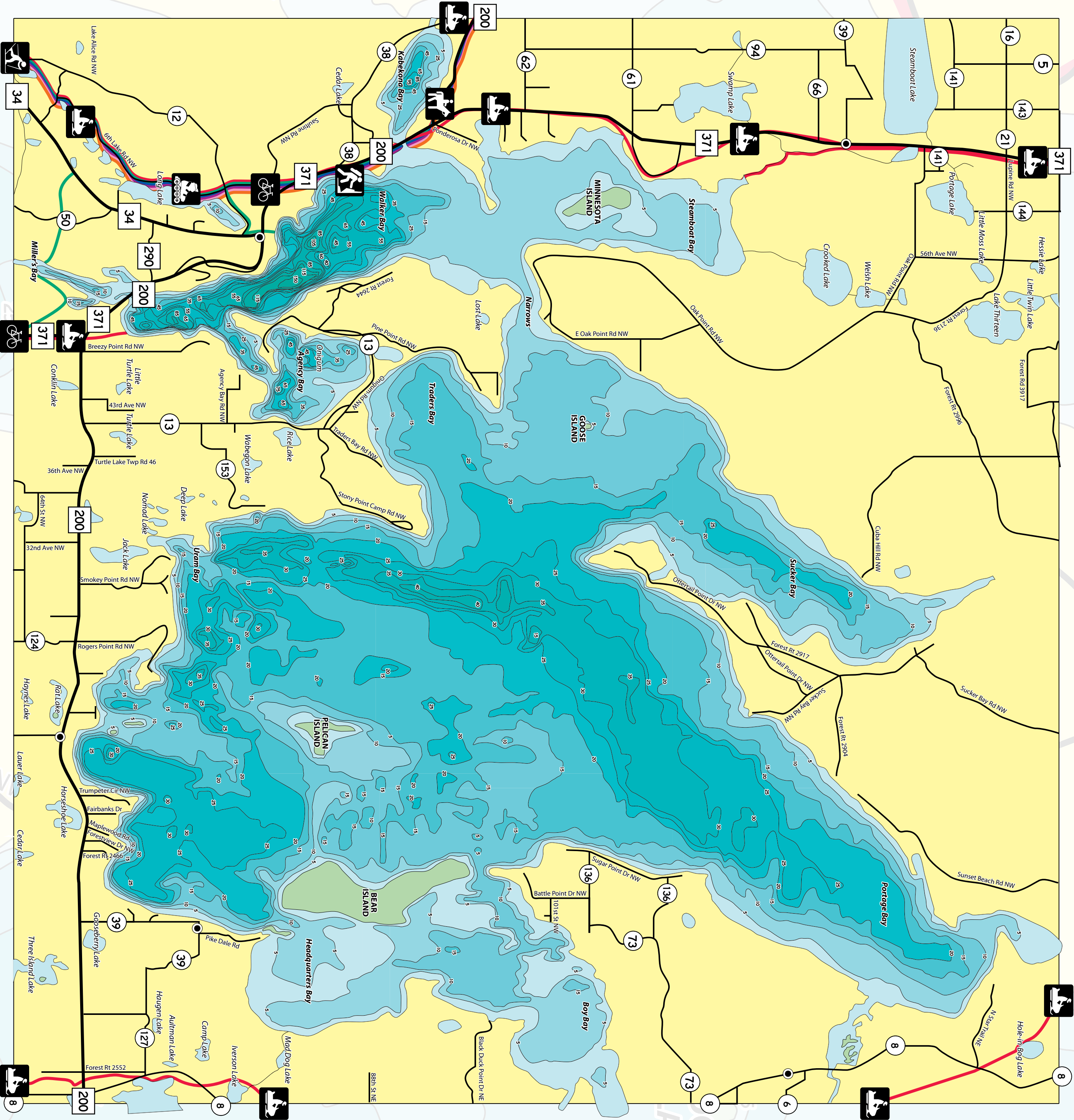
Buy or lease a bulk tank from us.
 Located 4 miles North on Hwy 371
 24 hour service

Art Hamlin - Plant Manager

Propane Gas
 Walker 218-547-1688 or 1-800-490-1688

We Provide

- 24 hour service by Certified Gas Technicians •
- Prompt Service • Competitive Rates •
- Low Commercial Rates •
- Cash Dividends Paid Back Annually •



NEWS TALK 3WI
 AM 1270
 FM 95.9
 www.3witradio.com

JOIN Lon Schmidt and Jimmy V on the "Eye Opener Morning Show" Monday - Friday 6am to 9am and "The Back Porch" Thursday 8am to 9am

Your Chance To Talk.
 218-828-9994

SPENCER ROSS AMERICAN LEGION
 OPEN TO THE PUBLIC

- Food
- Meet Refries
- Bingo
- Game Room
- Pull Tabs
- Hall Rental for Weddings, Receptions, Meetings, Catered Banquets, Etc.

Coming # 00115
 407 FRONT ST. • WALKER, MN • (218) 847-1011

Hagen Flooring, LLC
 Serving the Park Rapids Area For Over 20 Years

Residential • Commercial
 Floor Specialist • Sales
 Service • Carpet • Vinyl
 Tile • Laminate • Wood

Call Rob • 218-252-6088

LincolnMarketing
 Support Your Local Merchants
 Scan The QR Code
 For Free Online Coupons

LT MAKES CENTS
 LOCK COUPONS INSIDE
 2012

If You're Buying or Selling In The Lakes Area... Call

MARK TIETJEN
 (218) 536-0008
 of Rusty's Up North Realty

View All Of Our Listings At
 www.UpNorthRealtyMN.com
 Mark@UpNorthRealtyMN.com

Shop. Dine. Play. Stay. LOCALLY

and help support businesses throughout your area.

This map is prepared with information provided to us by others. Therefore, Lincoln Marketing and the advertisers assume no responsibility for the accuracy of the information. Comments and suggestions may be directed to: ml@lincolnmarketing.us

View this publication online at: www.lincolnmarketing.us

SCAN THE QR CODE TO DOWNLOAD A FREE COPY OF THIS MAP

LincolnMarketing

- Snowmobile Trail
- Bicycle Trail/Route
- Equestrian Trail
- Hiking/Walking Trail
- In-Line Skating
- Cross-Country Ski Trail