

- ORV Trail/Route
- Bicycle Trail
- Hiking/Walking Trail
- Equestrian Trail
- Snowshoe Trail
- Scenic Byway
- Golf Course
- Disc Golf Course
- Dirt Bike Trail/Route
- Snowmobile Trail
- Cross-Country Ski Trail
- Mountain Bike Trail
- Inline Trail
- Airport
- Dog Park
- Skate Park

**BOOM CONCRETE**

Newell SD  
boomcon.com

**MAKE IT A BUFFET DAY**

BRING THIS AD IN FOR 10% OFF OUR BUFFET

**Buffet Catering Delivery**

**BUFFET HOURS**  
LUNCH: 11:00AM-3:00PM  
EVENING: 3:00PM-8:00PM

2711 Lazelle Street • Sturgis, SD  
605-347-3400 • pizzaranch.com

**Free Local Area Trails Map**

Black Hills, SD

Scan the QR Code for a Digital Copy

LincolnMarketing

**CBH CO-OP**  
Always Running

**PIZZA**

**CHAMPS Chicken**  
(Hot Stuff Pizza & Champs)  
Chicken not available at all locations

cbhcoop.com

**Belle Fourche Travel Center • 605-723-9000**  
18765 US 85 • Belle Fourche, SD

**Belle Fourche C-Store • 605-892-2661**  
2311 5th Ave • Belle Fourche, SD

**Elkhorn Ridge Travel Center • 605-717-6960**  
6764 E Colorado Blvd • Spearfish, SD

**Sturgis C-Store • 605-347-3305**  
2030 Lazelle St • Sturgis, SD

Save on high energy bills  
Cheaper than roof replacement

**FREE ESTIMATES**

**Spray Foam Insulation**

What we offer:  
No Job Too Big or Small  
We provide services to commercial, residential, and agricultural customers all over Southwestern SD & we work alongside contractors to accommodate their schedules to keep projects moving forward.  
Licensed & Professional  
We are a fully licensed & insured company and we strive to provide a safe & professional job to every customer.

**PSC**  
Parker Sprayfoam & Coatings  
parkersland@yahoo.com

**SPEARFISH CANYON LODGE**

Adventure Awaits!  
Create Memories In The Black Hills!

**Spearfish Canyon Adventures**  
Rental shop that includes brand new Polaris ATVs, snowmobiles, slingshots, fly fishing gear & more! Hike or snowshoe to one of the nearby waterfalls

**Weddings & Events**  
Host your wedding, family reunion or corporate retreat with us! A beautiful, all-inclusive resort for a perfect getaway for you and all your guests!

**Latchstring Restaurant**  
Open 7 days a week featuring breakfast, lunch & dinner! Don't miss out on a homemade Cinnamon or Caramel Roll!

**Lodge Rooms & Suites**  
Relax in one of our rustic lodge rooms or suites. The Berry Patch Cabin or Creekside units!

**Roughlock Lounge**  
Featuring local beer, a wide variety of cocktails, beer & wine. Homemade flatbread pizzas and meat & cheese platters

**NEW this year! Outdoor dining igloos!**

Family, Friends, Fitness & FUN

**Rec CENTER**

1111 National St., Belle Fourche, SD  
605-892-2467  
BelleFourcheRec.com

Proudly serving the Northern Hills for over 30 years!

Facebook Web

STOP BY FOR A TOUR AND TO LEARN MORE

**HITCHRAIL BAR AND RESTAURANT**

421 Northern St.  
Pringle, SD 57773  
605-673-2697

Daily Lunch Specials  
All You Can Eat Catfish Friday Night  
Prime Rib Friday & Saturdays

ATV's & Bikers Welcome

The dining room is open Tuesday thru Sunday, from 11am-8pm (we stop seating at 7:45pm). Closed Mondays.

Your Hometown Home Improvement Store!

- Plumbing
- Electrical
- Household
- Outdoor Grilling
- Camping Supplies
- Milwaukee Tools
- Valspar Paints
- DeWalt Tools
- Pet Supplies
- Key Cutting

**NEWELL HARDWARE & SUPPLY**

320 Girard, Newell, SD • 605-456-2313

YOU'RE MORE THAN A CUSTOMER. YOU'RE A NEIGHBOR.

**Uncle Louie's Diner**

Best Diner In Town

Daily Specials

SHAKES • MALTS • ROOT BEER FLOATS

Check Our Facebook Page For Specials & Events!

1039 Main St • Sturgis, SD  
605-720-6475

Scan QR Code to go to the individual County Page

Lawrence County Meade County

This free publication is made possible by the advertisers and other local agencies and may not be reproduced. Please support the local advertisers on this publication. Comments and/or suggestions may be directed to: info@lincolnmktg.com

This map is prepared with information provided to us by others, therefore, Lincoln Marketing and the advertisers assume no liability in regards to trails (including accuracy). Please respect private property and no trespassing signs. Stay on trails. Exercise extreme caution on all lakes and streams. Obey all state and local laws and ordinances. Do not operate snowmobiles on county roads or state highways. Posted signs on the trails override the printed map trails.

View this publication online at [www.lincolnmktg.com](http://www.lincolnmktg.com)

**WE LIKE THE TOUGH JOBS**

**FISHER**  
Sand & Gravel Co.

19730 Red Hill Rd., Spearfish  
605-642-5760 | Fisherind.com

**MARIA'S MEXICAN RESTAURANT**

Serving Breakfast Everyday

Homemade Meals with Fresh Ingredients

216 W Mt. Rushmore Rd.  
Custer, SD • 605-673-6300

Hours: 7am-8:30pm, Monday-Sunday

COMING SOON  
Ice Cream & Coffee

**CRAZY HORSE MEMORIAL**

Mountain & Museums & Performances & Restaurant & Bus Rides & so much more.

Open All Year.  
CrazyHorseMemorial.org

ENJOY THE BEAUTIFUL BLACK HILLS FROM BASECAMP THAT IS JUST MINUTES AWAY FROM STURGIS

• Beautiful canyons for riding  
• Many attractions to see

LOCATED OFF EXIT 37 ON INTERSTATE 90 CONTAINS 42 ACRES OF BEAUTIFUL GREEN GRASS, SHADE TREES AND THE BULLDOG CREEK

• 50 & 50 amp full hook-up  
• 30 amp water only  
• 110 volt electric sites  
• Plenty of space for tent or dry camping sites

MAKE IT FEEL LIKE HOME:  
• Cabin, camper and fully furnished mini homes for rent  
• Laundry facilities  
• 2 bathhouses  
• Pet friendly

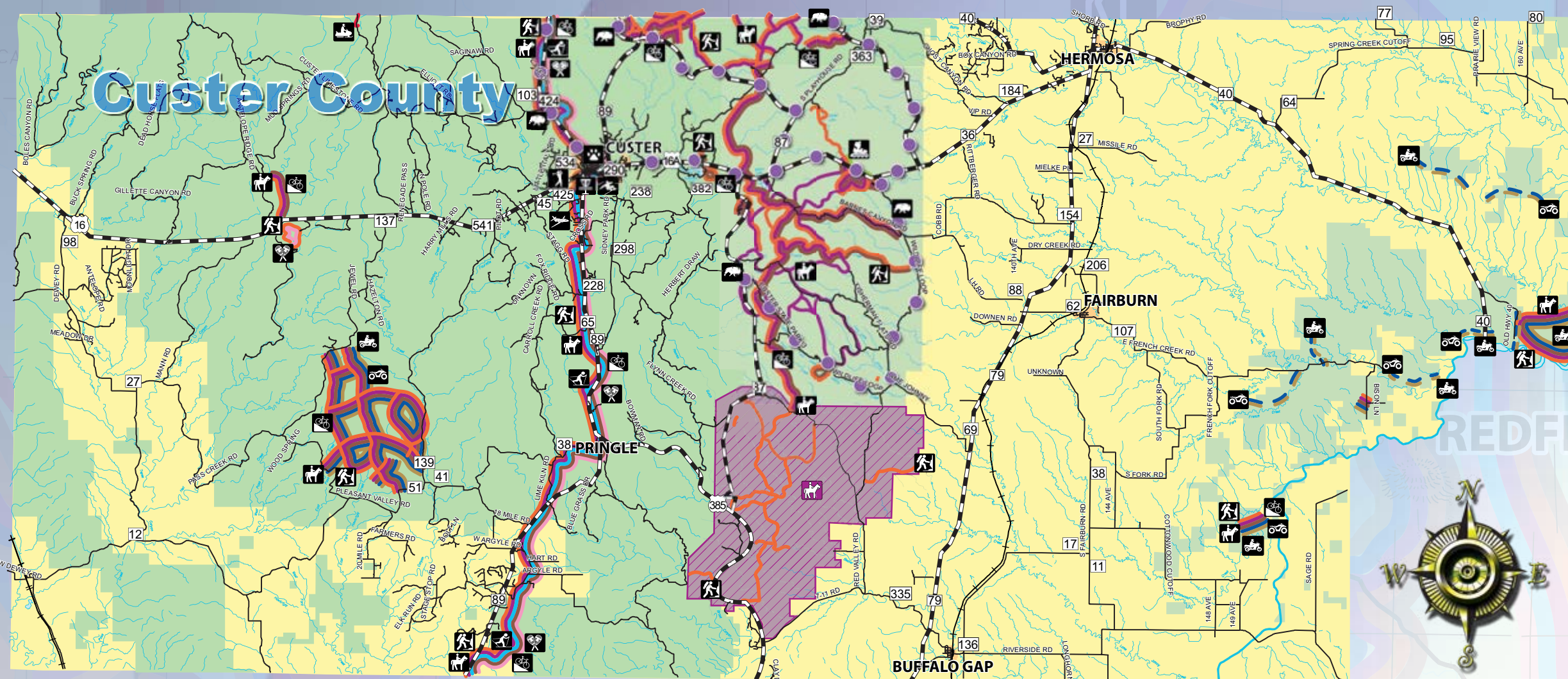
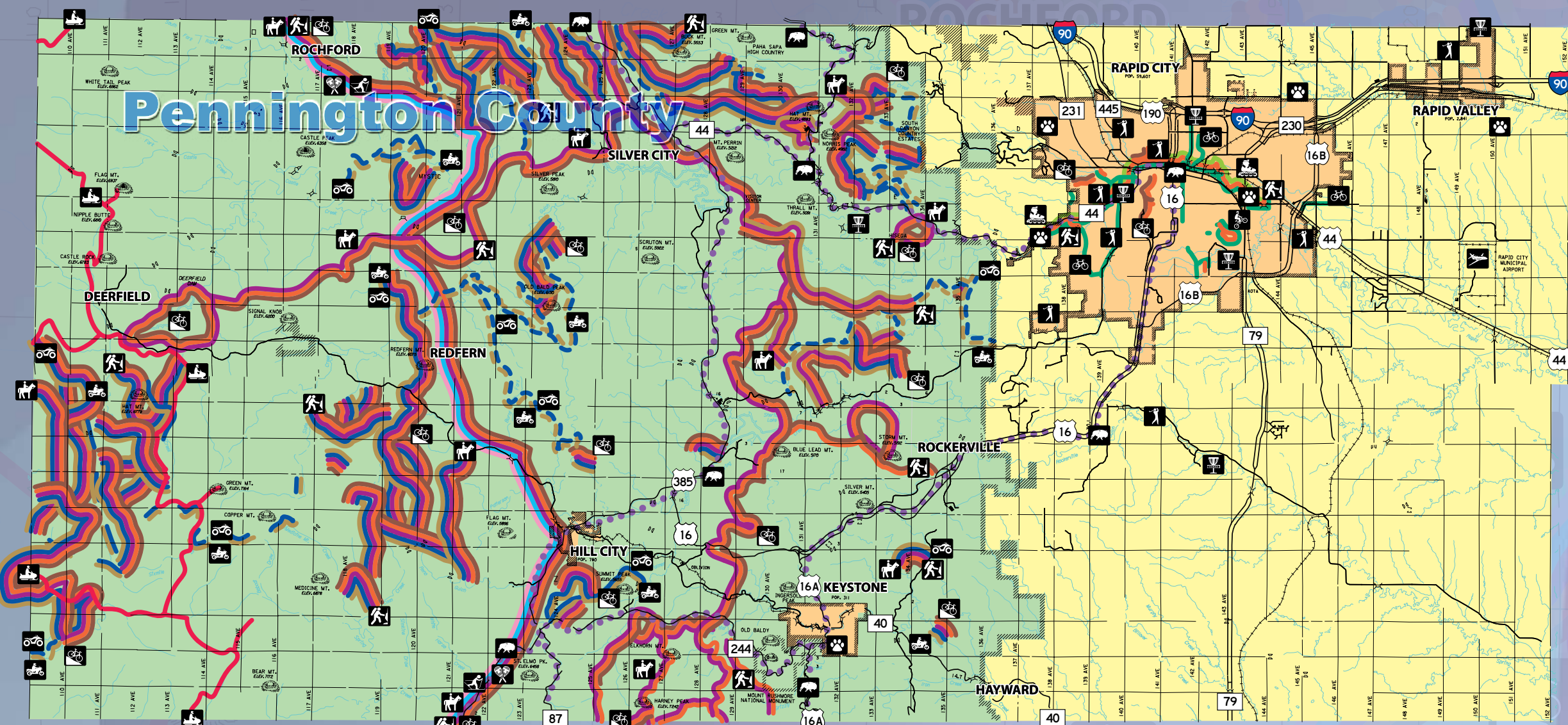
Visit us on facebook, website [WWW.BULLDOGCREEK.COM](http://WWW.BULLDOGCREEK.COM) or call us 605-347-8000 to check out our event weekends or for reservations

**BULLDOG CREEK CAMPGROUND**  
STURGIS SD

GREAT PLACE TO SET UP BASE CAMP. PARK YOUR TRAILER AND ENJOY THE BLACK HILLS OF SOUTH DAKOTA.

**Spearfish Canyon Resort**

605-584-3435 [www.spcanyon.com](http://www.spcanyon.com)



- Snowshoe Trail
- Inline Trail
- Scenic Byway
- Airport
- Golf Course
- Dog Park
- Disc Golf Course
- BMX Park
- Skate Park
- DRV Trail/Route
- Dirt Bike Trail/Route
- Bicycle Trail
- Snowmobile Trail
- Hiking/Walking Trail
- Cross-Country Ski Trail
- Mountain Bike Trail
- Equestrian Trail
- Equestrian Area

Scan QR Code to go to the individual County Page

Custer County

Pennington County

This free publication is made possible by the advertisers and other local agencies and may not be reproduced. Please support the local advertisers on this publication. Comments and/or suggestions may be directed to: info@lincolnmktg.us

This map is prepared with information provided to us by others, therefore, Lincoln Marketing and the advertisers assume no liability in regards to trails (including accuracy). Please respect private property and no trespassing signs. Stay on trails. Exercise extreme caution on all lakes and streams. Obey all state and local laws and ordinances. Do not operate snowmobiles on county roads or state highways. Posted signs on the trails override the printed map trails.

View this publication online at [www.lincolnmktg.us](http://www.lincolnmktg.us)

**MARIA'S MEXICAN RESTAURANT**

Serving Breakfast Everyday

Homemade Meals with Fresh Ingredients

216 W Mt. Rushmore Rd. Custer, SD • 605-673-6800

Hours: 7am-8:30pm, Monday-Sunday

**COMING SOON**  
Ice Cream & Coffee

**WE LIKE THE TOUGH JOBS**

19730 Red Hill Rd., Spearfish  
605-642-5760 | Fisherind.com

**CRAZY HORSE MEMORIAL**

Mountain & Museums & Performances & Restaurant & Bus Rides & so much more.

Open All Year.  
CrazyHorseMemorial.org

**Free Local Area Trails Map**

Black Hills, SD

Scan the QR Code for a Digital Copy

LincolnMarketing

**CBH CO-OP**  
Always Running

**HOT STUFF PIZZA**

**CHAMPS Chicken**  
(Hot Stuff Pizza & Champs)  
Chicken not available at all locations

cbhcoop.com

**Belle Fourche Travel Center • 605-723-9000**  
18765 US 85 • Belle Fourche, SD

**Belle Fourche C-Store • 605-892-2661**  
2311 5th Ave • Belle Fourche, SD

**Elkhorn Ridge Travel Center • 605-717-6960**  
6764 E Colorado Blvd • Spearfish, SD

**Sturgis C-Store • 605-347-3305**  
2030 Lazelle St • Sturgis, SD

*Advertisers Appreciate It!*

**Tell Them You Saw Them On The Map!**

LincolnMarketing

**Uncle Louie's Diner**

Best Diner In Town

*Daily Specials*

SHAKES • MALTS • ROOT BEER FLOATS

Check Our Facebook Page For Specials & Events!

1039 Main St • Sturgis, SD  
605-720-6475

**HITCHRAIL BAR AND RESTAURANT**

421 Northern St. Pringle, SD 57773  
605-673-2697

- Daily Lunch Specials
- All You Can Eat Catfish Friday Night
- Prime Rib Friday & Saturdays

ATV's & Bikers Welcome

The dining room is open Tuesday thru Sunday, from 11am-8pm (we stop seating at 7:45pm). Closed Mondays.

Family, Friends, Fitness & FUN

**Rec CENTER**

1111 National St., Belle Fourche, SD  
605-892-2467  
BelleFourcheRec.com

Proudly serving the Northern Hills for over 30 years!

STOP BY FOR A TOUR AND TO LEARN MORE

**SPEARFISH CANYON LODGE**

Adventure Awaits!  
Create Memories In The Black Hills!

**Spearfish Canyon Adventures**  
Rental shop that includes brand new Polaris UTVs, snowmobiles, slingshots, fly fishing gear & more! Hike or snowshoe to one of the nearby waterfalls

**Weddings & Events**  
Host your wedding, family reunion or corporate retreat with us! A beautiful, all-inclusive resort for a perfect getaway for you and all your guests!

**Latchstring Restaurant**  
Open 7 days a week featuring breakfast, lunch & dinner! Don't miss out on a homemade Cinnamon or Caramel Roll!

**Lodge Rooms & Suites**  
Relax in one of our rustic lodge rooms or suites. The Berry Patch Cabin or Creekside units!

**Roughlock Lounge**  
Featuring local beer, a wide variety of cocktails, beer & wine. Homemade flatbread pizzas and meat & cheese platters

**NEW this year! Outdoor dining igloos!**

**THANK YOU**

FOR 40+ YEARS of Local Business

LincolnMarketing

Shop. Dine. Play. Stay. **LOCALLY** and help support businesses throughout your area.

**MAKE IT A BUFFET DAY**

BRING THIS AD IN FOR 10% OFF OUR BUFFET

**Buffet Catering Delivery**

**PIZZA RANCH**

2711 Lazelle Street • Sturgis, SD  
605-347-3400 • pizzaranch.com

ENJOY THE BEAUTIFUL BLACK HILLS FROM BASECAMP THAT IS JUST MINUTES AWAY FROM STURGIS

**BULLDOG CREEK CAMPGROUND** STURGIS SD

LOCATED OFF EXIT 37 ON INTERSTATE 90 CONTAINS 43 ACRES OF BEAUTIFUL GREEN GRASS, SHADE TREES AND THE BULLDOG CREEK.

MAKE IT FEEL LIKE HOME:

Great place to set up base camp, park your trailer and enjoy the Black Hills of South Dakota.

Save on high energy bills  
Cheaper than roof replacement

**FREE ESTIMATES**

**Spray Foam Insulation**

What we offer:  
No Job Too Big or Small  
We provide services to commercial, residential and agricultural customers all over Southwestern SD, & we work alongside contractors to accommodate their schedules to keep projects moving forward.

**PSC Parker Sprayfoam & Coatings**

605-515-4388

**BOOM CONCRETE**

Newell SD  
boomcon.com

605-584-3435 www.spfcanyon.com

**Spearfish Canyon Resort**