

Free Local Area GUIDE

Black
Hills,
South
Dakota

LincolnMarketing
www.lincolnmktg.com

Scan the QR Code
for a Digital Copy



(Hot Stuff Pizza & Champs Chicken
not available at all locations)



cbhcoop.com 

Belle Fourche Travel Center • 605-723-9000
18765 US 85 • Belle Fourche, SD

Belle Fourche C-Store • 605-892-2661
2311 5th Ave • Belle Fourche, SD

Elkhorn Ridge Travel Center • 605-717-6960
6764 E Colorado Blvd • Spearfish, SD

Sturgis C-Store • 605-347-3305
2030 Lazelle St • Sturgis, SD

GO TO www.bellefourchelivestock.com FOR OUR (605) 892-2655
Auction Schedule & Special Sale Dates (800) 894-8684

Belle Fourche

LIVESTOCK MARKET



SERVING THE
 TRI-STATE
 AREA SINCE 1935

Travis Linch, Owner

CRAZY HORSE MEMORIAL®
 Open Year-Round! CrazyHorseMemorial.org

All Photos © Crazy Horse Memorial

Guadalajara

MEXICAN RESTAURANT & BAR



- Authentic Mexican Food
- Full Bar/Private Rooms Available
- Best Margaritas in South Dakota!
- Traditional Mexican Decor & Pottery
- A True Fiesta For Special Occasions

83 West Hwy 14 • Spearfish, SD
605-642-4765
 Open Daily 11am - 10pm

Buy a lunch &
 2 soft drinks
 & get \$4 OFF
 the second lunch

Every Sunday
 Kids Meal
 99¢

WORTH THE DRIVE FROM ANYWHERE

Lunch: Mon-Sun 11am-3pm
 Dinner: Mon-Sun 3pm-10pm

Dakota Bus Service Inc.



Dakota Bus Service is looking for both experienced and new drivers in the Spearfish, Rapid City and Gillette, WY areas. Dakota Bus Service will train new candidates that meet minimum hiring requirements.

Contact 605-642-2353



**STOP IN &
CHECK OUT
OUR HUGE
SELECTION
OF IN-STOCK
FLOORING.**

**Thousands of
square feet of
Luxury Vinyl Plank**

**Thousands of
yards of Carpet**



CARPET BUYERS OUTLET

4425 E. Colorado Blvd. | Spearfish, SD 57783

605-644-1665

www.carpetbuyersoutlet.net



TABLE OF CONTENTS



- 2-3 Local Area Events
- 4-5 Resident Services
- 6-7 Custer County History & Communities
- 8-9 Lawrence County History & Communities
- 10-11 Meade County History & Communities
- 12-13 Pennington County History & Communities
- 14-15 Parks & Recreation
- 16-17 Local Area Attractions
- 18-19 Hunting Seasons
- 20-21 GFP License Centers
- 23 Fishing Fees & Limits
- 30 Local Area Snowmobile Trails
- 31 George S. Mickelson Trail

Scan the QR Codes to go to the individual county pages.

Custer County



Lawrence County



Meade County



Pennington County



This free publication is made possible by the advertisers and other local agencies and may not be reproduced. Please support the local advertisers on this publication. Comments and/or suggestions may be directed to: info@lincolnmarketing.us

View this publication online at www.lincolnmarketing.us

Local Area Events

JANUARY

Black Hills Stock Show & Rodeo | Rapid City
Red Dirt Music Festival | Deadwood
ISOC Deadwood Snocross Shootout |
Deadwood
Chinook Days | Spearfish

FEBRUARY

Mardi Gras Weekend | Deadwood
Annual Nemo 500 Out House Race | Nemo
Annual Custer Restaurant Week (Feb-Mar)
Annual Counts Car Show | Rapid City
Winterfest | Lead
Black Hills Fat Tire Festival | Rapid City

MARCH

Cultural Expo | Rapid City
St. Patrick's Day Weekend | Deadwood
Festival of Bands | Rapid City
Mountain West Whiskey Festival | Rapid City

APRIL

Annual Earth Day Expo | Rapid City
Forks, Corks & Kegs - Food & Wine Festival |
Deadwood
Easter Egg Hunt | Hill City
Kountry Junkin' Spring Market | Rapid City

MAY

Cinco de Mayo | Deadwood
Black Hills Motorcycle Show | Deadwood
Back When They Bucked: An All-Day Rodeo |
Deadwood
Badland's Circuit Finals Steer Roping |
Deadwood

JUNE

Native POP: People of the Plains | Rapid City
Annual Black Hills Quilt Show & Sale |
Rapid City
Annual Spring Crazy Horse Volksmarch |
Rapid City
Wild Bill Days | Rapid City
Black Hills Con. | Rapid City
Deadwood PBR
Mickelson Trail Trek | Rapid City
Custer Cruisin' - Mayor's Ride | Custer

JULY

Mount Rushmore Independence Day
Celebration | Rapid City
Rapid City Independence Day Celebration |
Rapid City
Independence Day parade | Deadwood,
Spearfish
Wheeler Rally | Deadwood
Days of '76 Rodeo & Parade | Deadwood
4th of July Celebration | Custer
Custer Gold Discovery Days | Custer
Annual Black Hills Corvette Classic | Spearfish
Festival in the Park | Spearfish
Black Hills Roundup Rodeo | Rapid City

AUGUST

Central States Fair & Rodeo | Rapid City
Kool Deadwood Nites | Rapid City
Sturgis Motorcycle Rally | Sturgis, Rapid City
Spirit of Sturgis Vintage Festival | Sturgis
Sturgis Rally & Races | Deadwood
Legend's Ride | Deadwood
Kool Deadwood Nites | Deadwood
Northern Hills AG Fest | Sturgis

SEPTEMBER

Black Hills Polkapalooza | Rapid City
Pumpkin Festival | Rapid City
Wine Express | Rapid City
Spearfish Corn Maze (Sept-Oct) | Spearfish
South Dakota Festival of Books | Deadwood
Deadwood Jam | Deadwood
Custer State Park Roundup & Arts Festival |
Custer
Wheelin' to Wall | Wall
Autumn Festival | Rapid City
Annual Fall Crazy Horse Volksmarch |
Rapid City

OCTOBER

Black Hills Powwow | Rapid City
Native American Day & Parade | Rapid City
Spearfish Corn Maze | Spearfish
Wild West Songwriter's Festival | Deadwood

OCTOBER (CONTD)

Deadweird | Deadwood
Pumpkin Fest | Belle Fourche
Oktoberfest | Deadwood

NOVEMBER

Festival of Lights Parade | Rapid City
Main Street Square Holiday Celebration |
Rapid City
Main Street Square Winter Market |
Rapid City
Pinedale Annual Bazaar | Rapid City

DECEMBER

Annual Lakota Nation Invitational |
Rapid City
Christmas Parade | Custer

* Events are subject to change



VISITOR CENTER

... AT THE CENTER OF THE NATION



This is where your western adventure begins!

Our picturesque complex includes a **museum** full of western, pioneer and natural history exhibits, plus hands-on activities for the kids; the historic **Johnny Spaulding Cabin**, and the magnificent granite **Center of the Nation monument and Avenue of State flags**.

We're located in the little town where the west begins: Belle Fourche!
Our **Visitor Center** includes maps and traveler information, too!

FREE ADMISSION

Autumn-Winter hours: Tuesday-Saturday 9 to 5

Summer hours: Monday-Saturday 9 to 5; Sunday 1 to 4

415 Fifth Avenue, Belle Fourche, SD

www.thetristatemuseum.com • 605-723-2010 or 605-723-1200

CUSTER COUNTY

Auditor	(605) 673-8114
Building & Ground Maintenance	673-8117
Director of Equalization	673-8170
Emergency	911
Emergency Management	673-8152
Extension Office	673-4971
Health Department	910-4495
Highway Department	673-5678
Human Resources	673-8134
Register of Deeds	673-8171
Sheriff	673-8176
State's Attorney	673-8175
Treasurer	673-8114
Veterans Services	673-8123

LAWRENCE COUNTY

Auditor	(605) 578-1941
Building & Ground Maintenance	578-1570
Director of Equalization	578-3680
Emergency	911
Emergency Management	578-2122
Extension Office	892-3371
Health Department	578-2660
Highway Department	578-2183
Register of Deeds	578-3930
Sheriff	578-2230
Social Service Department	578-2402
State's Attorney	578-1707
Treasurer	578-1862
Veterans Services	578-9748

MEADE COUNTY

Auditor	(605) 347-2360
Building & Ground Maintenance	347-5415
Director of Equalization /Planning	347-3818
Emergency	911
Emergency Management	347-7623
Extension Office	347-2436
Health Department	347-5650
Highway Department	347-4565
Human Resources	720-6628
Register of Deeds	347-2356
Sheriff	347-2681
State's Attorney	347-4491
Treasurer	347-5871
Veterans Services	347-7623

PENNINGTON COUNTY

Auditor	(605) 394-2153
Building & Ground Maintenance	394-2172
Director of Equalization	394-2175
Emergency	911
Emergency Management	394-2185
Extension Office/4-H	394-2188
Health & Human Services	394-2156
Highway Department	394-2166
Human Resources	721-6112
Register of Deeds	394-2177
Sheriff	394-6113
State's Attorney	394-2191
Treasurer	394-2163
Veterans Services	394-2266

Custer County History

Custer County Communities



As gold was discovered in the Black Hills, Custer County was established. Founded in 1877, Custer County was named after General George A. Custer. The county seat was originally chosen as Hayward, but due to an undecided election, Custer City was able to successfully battle for the county seat. Residents of Custer City devised a plan of staging a massacre to distract Hayward officials and the county seat was secured. As the Burlington Railroad arrived in 1890, Custer County continued to grow until the gold rush ended. Industry began to include agriculture, mining, ranching and tourism. Today Custer County is home to approximately 8,318 residents.

BUFFALO GAP – pop. 131

CUSTER (COUNTY SEAT) – pop. 1,919

FAIRBURN – pop. 60

HERMOSA – pop. 382

PRINGLE – pop. 109

**Populations are approximate.*

BUFFALO GAP

Buffalo Gap, founded in 1877, was named due to buffalo traveling through the gap of the nearby Beaver Creek. A post office was established and by 1884 there were over 1200 people in residence. As the railroad arrived in 1885, the area continued to grow and had a variety of saloons, hotels, specialty shops and a bank. A boomtown and cattle town, Buffalo Gap has since grown to a small rural community. Today Buffalo Gap is home to approximately 131 residents.

CUSTER (COUNTY SEAT)

General George A. Custer commanded an expedition to the area in search of gold in 1874. As gold was discovered, a community was quickly founded. Originally known as Stonewall, by 1875 there were several thousand people panning for gold and Stonewall was renamed Custer. Within a year, news spread of gold found in Deadwood Gulch and Custer was left almost abandoned. In 1877 Custer was selected as the county seat and the area grew slowly. The Harney National Forest Headquarters were established in 1898 and Custer State Park was then founded in 1913. Today Custer is home to approximately 1,919 residents.



© Crazy Horse Memorial

Lawrence County History

Lawrence County Communities



Lawrence County was organized in 1877 and named in honor of its first county treasurer, Colonel John Lawrence. Although Lawrence County was one of the smallest counties in South Dakota, it included half the population and wealth of the Black Hills, estimated at 18,000 people and 11 million dollars in 1903. Settlers arrived in search of gold and communities were established near stage coach stops and rail lines. With the gold rush, Lawrence County was booming. As the gold rush ended, development slowed. Deadwood was voted as the county seat and was home to several historical figures including Wild Bill Hickok and Calamity Jane. At one point, Deadwood was the largest city in South Dakota. Today Lawrence County is home to approximately 25,768 residents.

BOULDER CANYON – pop. 561

CENTRAL CITY – pop. 93

CROOK CITY – pop. 132

DEADWOOD (COUNTY SEAT)

– pop. 1,156

LEAD – pop. 2,982

NORTH SPEARFISH – pop. 2,366

SPEARFISH – pop. 12,193

SAINT ONGE – pop. 170

WHITWOOD – pop. 879

MOUNTAIN PLAINS – pop. 327

**Populations are approximate.*

DEADWOOD (COUNTY SEAT)

Once an illegal community, Deadwood was incorporated in 1876 and named after dead trees found in the nearby canyon. Gambling, prostitution and gold mining attracted settlers and by 1880 its population reached 5,000. Deadwood became famous for the murder of Wild Bill Hickok and the community was widely recognized for its lawless character. As the gold rush ended, Deadwood was almost destroyed by fire. The railroad arrived in 1881 and Deadwood continued to prosper, having the first telephone service in South Dakota. It was the trading center for the Black Hills and selected as the county seat. Today Deadwood is home to approximately 1,156 residents.

LEAD

In 1876 the Homestake Mining Company founded Lead as a company town. As families grew, the need for education grew. Phoebe Hearst, local resident, established a kindergarten school and a library in 1900. As the gold rush slowed, Lead's population began to decline. With over four hundred historic buildings, much of Lead was registered on the National Register of Historic Places in 1974. Today Lead is home to approximately 2,982 residents.

SPEARFISH

The name Spearfish was coined by local Native Americans, fur traders and trappers as the local stream was a prime place for spearing fish. The community was platted in 1876 and a post office and general store were established a year later. The Spearfish Normal School was built in 1883, which is now recognized as Black Hills State University. As the railroad arrived in 1893, Spearfish continued to grow. The D.C. Booth Fish Hatchery and Matthew's Opera House are located here, attracting visitors annually. Today Spearfish is home to approximately 12,193 residents.

WHITWOOD

Whitewood was established in 1888 and as the railroad arrived, the area began to thrive. The railroad station became the heart of the community and Whitewood was known as the Hub of the Hills. As the gold rush ended, development began to slow. Today Whitewood is home to approximately 879 residents.

Meade County History

Meade County Communities



Meade County, the largest county in South Dakota, was named in honor of General George Meade whom Fort Meade is named for. It was established in 1878 and settled by prospectors in search of gold and soldiers stationed at Fort Meade. Communities grew quickly near stage coach stops and from 1900 to 1910, the population of Meade County grew from almost 5,000 to over 12,000. Industry began to include agriculture, ranching and tourism. Today Meade County is home to approximately 23,916 residents.

BLACKHAWK – pop. 3,026

BLUCKSBERG MOUNTAIN – pop. 467

BOX ELDER – pop. 11,746

ELLSWORTH AFB – pop. 15,840

FAITH – pop. 367

PIEDMONT – pop. 971

STURGIS (COUNTY SEAT) – pop. 7,020

SUMMERSET – pop. 2972

**Populations are approximate.*

BOX ELDER

Settled in a fertile valley, Box Elder was founded as the railroad arrived in 1907. It was named after the local box elder trees and the community began to grow. A post office, school and general stores were established, attracting many settlers. It is the site of the Ellsworth Airforce Base and the Air and Space Museum. Today Box Elder is home to approximately 11,746 residents.

ELLSWORTH AIRFORCE BASE

The Ellsworth Airforce Base was established in 1942 to train military pilots for World War II. It was first known as the Rapid City Army Air Base until it was renamed in honor of Brigadier General Richard E. Ellsworth. It now houses the 28th Bomb Wing of the Air Combat Command and is NASA Space Shuttle's emergency landing site. Today the Ellsworth Airforce Base is home to approximately 15,840 residents.

PIEDMONT

As the railroad arrived in the late 1800s, Piedmont was established. Its name is French for foot of the mountain, as it lies near the base of the Black Hills. The community attracted miners, lumberers and pioneers and has since continued to grow. Piedmont was officially incorporated in 2008. Today Piedmont is home to approximately 971 residents.

STURGIS (COUNTY SEAT)

Fort Meade was established in 1878 to defend settlers and gold miners of the Black Hills area and Sturgis grew as a boomtown. Sturgis became a stagecoach and freight stop and the community was named in honor of Colonel Samuel D. Sturgis, Fort Meade commander. Sturgis was incorporated in 1888 and later selected as the county seat. As the gold rush ended, development slowed until 1938 when Pappy Hoel and Jack Pine Gypsies started the annual Sturgis Motorcycle Rally. The rally, first called the Black Hills Classic, featured racing and stunts and now draws over 500,000 attendants annually, giving Sturgis the nickname Motorcycle City USA. Sturgis is also the site of Bear Butte, sacred grounds which have been established as a state park. Today Sturgis is home to approximately 7,020 residents.

Meade County History

Meade County Communities



Pennington County was organized in 1875 and was named in honor of Dakota Territory Governor John L. Pennington. The original county seat was located in Sheridan until it was moved to Rapid City. With the arrival of the Gold Rush, prospectors and miners flocked to the area. Mining camps became cities and by 1910, the population of Pennington County reached 12,453. As the gold rush came to a halt, tourism replaced industry. In 1941 Mount Rushmore was completed by Gutzon Borglum and dedicated by President Calvin Coolidge, now attracting over 3 million visitors annually. Today Pennington County is home to approximately 109,222 residents.

ASHLAND HEIGHTS – pop. 678

BOX ELDER – pop. 11,746

CAPUTA – pop. 32

COLONIAL PINE HILLS – pop. 1,903

CREIGHTON – pop. 2,561

GREEN VALLEY – pop. 1,051

HILL CITY – pop. 872

JOHNSON SIDING – pop. 614

KEYSTONE – pop. 240

NEW UNDERWOOD – pop. 590

OWANKA – pop. 2

QUINN – pop. 63

RAPID CITY (COUNTY SEAT) – pop. 74,703

RAPID VALLEY – pop. 8,098

WALL – pop. 699

WASTA – pop. 65

WICKSVILLE – pop. 139

**Populations are approximate.*

HILL CITY

Hill City, the oldest city in Pennington County, grew as a mining town in the 1800s. First settled in 1876, Hill City was originally known as Hillyo. A post office was established in 1877 and as the gold rush ended, Hill City was left almost deserted. With the discovery of tin in 1883, Hill City was once again booming. A school was built in 1921 and the area grew as a popular tourist destination with the establishment of Custer State Park and Mount Rushmore. Today Hill City is home to approximately 872 residents.

KEYSTONE

Gold was found in the Keystone area and was first settled by Fred J. Cross in 1877. Originally known as Crossville, Keystone was platted by Jacob Reed and the community was renamed. Keystone grew as a boomtown and with the arrival of the railroad in 1900, its population reached 2,000. As Mount Rushmore was constructed, Keystone housed a majority of the workers and development continued. Today Keystone is home to approximately 240 residents.

RAPID CITY (COUNTY SEAT)

Rapid City was established in 1876 and platted by John Brennen and Samuel Scott. It was named after nearby Rapid Creek and promoted as the Gateway to the Black Hills. As a source for mining supplies, Rapid City grew to become a trading center. With the arrival of the railroad, Rapid City became an important transportation hub. It was selected as the county seat and is now a popular tourist destination. Today Rapid City is home to approximately 74,703 residents.

WALL

Wall, named for its proximity to the the high wall of the Badlands, grew as a small community in the late 1800s. With the establishment of the Wall Drug Store in 1931, Wall has grown to a well known tourist destination attracting nearly thousands of visitors each day. Today Wall is home to approximately 699 residents.



ANGOSTURA STATE RECREATION AREA

13157 N Angostura Rd. | Hot Springs | 605-745-6996

Located on 14,720 acres, Angostura State Recreation Area features a large reservoir built in 1949. It was recognized for its hot springs and has since become a popular vacation and recreation spot.

BADLANDS NATIONAL PARK

25216 Ben Reifel Rd. | Rapid City | 605-433-5361

Located on 244,000 acres, Badlands National Park was established in 1939 to conserve native animals and fossils. It features Red Shirt Table, a 10 mile long mountain that reaches 3,340 feet.

BEAR BUTTE STATE PARK

20250 SD-79 | Sturgis | 605-347-5240

Located on over 563 acres, Bear Butte State Park is a sacred area that is home to a variety of religious ceremonies, rock formations and wildlife. Established in 1961, it features a variety of recreational opportunities.

BLACK HILLS NATIONAL FOREST

1019 5th St. N | Custer | 605-673-9200
2014 N. Main St. | Spearfish | 605-642-4622
8221 Mount Rushmore Rd. | Rapid City | 605-343-1567

Located on over 1.25 million acres, Black Hills National Forest is home to Harney Peak, South Dakota's tallest mountain. Established in 1907, it features a wildlife preserve and 11 reservoirs.

CRAZY HORSE MEMORIAL

12151 Ave. of the Chiefs | Crazy Horse | 605-673-4681

Located on 328 acres, Crazy Horse Memorial was started in 1948 by Korczak Ziolkowski to honor Crazy Horse, an Oglala Lakota Indian warrior. Upon completion, it will be the largest sculpture in the world.

CUSTER STATE PARK

13389 US Hwy. 16A | Custer | 605-394-2693

Located on over 1.27 million acres, Custer National Forest is home to Indian burial grounds, cave paintings, the Grasshopper Glacier and a wildlife preserve. Established in 1905, it features a variety of recreational opportunities.

JEWEL CAVE NATIONAL MONUMENT

11149 US 16 B-12 | Custer | 605-673-8300

Located on 1347 acres, Jewel Cave National Monument is the second longest cave in the world spanning over 147 miles of charted passages. Established in 1908, it features calcite crystals, stalactites, stalagmites and the rare hydromagnesite balloon, a cave formation known as moonmilk.

MINUTEMAN MISSILE NATIONAL HISTORIC SITE

24545 Cottonwood Rd. | Philip | 605-433-5552

Located on 6 acres, Minuteman Missile National Historic site preserves the Minuteman II, a nuclear warhead missile from the Cold War era. Established in 1999, it features a missile launch facility and control center that was deactivated in 1991.

MOUNT RUSHMORE NATIONAL MEMORIAL

13000 SD-244 | Keystone | 605-574-2523

Located on over 1,200 acres, Mount Rushmore National Memorial was completed in 1941 by Gutzon Borglum. Representing the first 150 years of American history, United States Presidents George Washington, Thomas Jefferson, Theodore Roosevelt and Abraham Lincoln are carved in the mountain.

SHADEHILL STATE RECREATION AREA

19150 Summerville Rd. | Shadehill | 605-374-5114

Located on over 2,000 acres, Shadehill State Recreation Area features a large reservoir built in 1951 and features a variety of recreational opportunities.

WIND CAVE NATIONAL PARK

Hot Springs | 605-745-4600

Located on 28,295 acres, Wind Cave National Park was the first cave in the world to be selected as a national park. Established in 1903, it features 95 percent of the world's calcite formations.

Disc Golf

Disc golf or frisbee golf is played a lot like traditional ball golf but instead of hitting a ball with a club into a hole the player throws a frisbee into a basket. Disc golf can be played by just about anyone at any age. It's also a cheap sport to get into. Specialized frisbees for disc golf cost around \$10-\$15 and a lot of courses are free. Playing disc golf is a great way to get out for some exercise, enjoy nature and have some fun.

AREA ATTRACTIONS

1880 TRAIN - HILL CITY DEPOT

222 Railroad Ave. | Hill City | (605) 574-2222

ADAMS MUSEUM

54 Sherman St. | Deadwood | (605) 578-1714

ART ALLEY

599 7th St. | Rapid City | (605) 394-4101 ext. #3

BEAR COUNTRY U.S.A.

13820 US-16 S | Rapid City | (605) 343-2290

BIG THUNDER GOLD MINE

604 Blair St. | Keystone | (605) 666-4847

BLACK ELK PEAK

Sylvan Lake Area (Multiple Trailheads) | Keystone

BLACK HILLS BALLOONS

747 Mt. Rushmore Rd. | Custer | (605) 673-2520

BLACK HILLS CAVERNS

2600 Cavern Rd. | Rapid City | (605) 343-0542

BLACK HILLS COMMUNITY THEATRE

601 Columbus St. | Rapid City | (605) 394-1787

BLACK HILLS MINING MUSEUM

323 Main St. W U.S. 85 | Lead | (605) 584-1605

BLACK HILLS MUSEUM AT BLACK HILLS INSTITUTE

117 Main St. | Hill City | (605) 574-4289

CHAPEL IN THE HILLS

3788 Chapel Ln. | Rapid City |
(605) 342-8281

COSMOS MYSTERY AREA

24040 Cosmos Rd.
| Rapid City | (605)
343-9802

CRAZY HORSE MEMO- RIAL

12151
Ave. of
the Chiefs
| Crazy
Horse |
(605) 673-4681



CUSTER COUNTY 1881 COURTHOUSE MUSEUM

411 Mt. Rushmore Rd. | Custer | (605) 673-2443

DAHL ARTS CENTER

713 7th St. | Rapid City | (605) 394-4101

DAYS OF '76 MUSEUM

18 76th Dr. | Deadwood | (605) 578-1657

D.C. BOOTH HISTORIC FISH HATCHERY

423 Hatchery Circle | Spearfish | (605) 642-7730

DINOSAUR PARK

940 Skyline Dr. | Rapid City | (605) 343-8687

EVANS PLUNGE MINERAL SPRINGS

1145 River St. N | Hot Springs | (605) 745-5165

FIREHOUSE WINE CELLARS

620 Main St. | Rapid City | (605) 716-9463

FOUR MILE OLD WEST TOWN MUSEUM

11921 US-16 | Custer | (605) 673-3905

FT. MEADE MUSEUM

50 Sheridan St. | Fort Meade | (605) 347-9822

HIGH PLAINS WESTERN HERITAGE CENTER

825 Heritage Dr. | Spearfish | (605) 642-9378

HISTORIC ADAMS HOUSE

22 Van Buren St. | Deadwood | (605) 578-3724

HISTORIC ELKS THEATRE

512 6th St. | Rapid City | (605) 343-7888

HOMESTAKE ADAMS RESEARCH & CULTURAL CENTER

150 Sherman St. | Deadwood | (605) 722-4800

JEWEL CAVE NATIONAL MONUMENT

11149 Hwy. 16 - Bldg. B12 | Custer | (605) 673-8300

MEMORIAL PARK/BERLIN WALL EXHIBIT

206 N 8th St #100 | Rapid City | (800) 487-3223

MOUNT RUSHMORE NATIONAL MONUMENT

13000 Hwy. 244 | Keystone | (605) 574-2523

MUSEUM AT BLACK HILLS INSTITUTE

117 Main St. | Hill City | (605) 574-4289

MUSEUM OF GEOLOGY

561 St. Joseph St. E | Rapid City | (605) 394-2467

OLD GOVERNORS MANSION

3777 Anderson Rd. | Rapid City | (605) 393-2344

OLD MACDONALD'S FARM

23691 Busted Five Ct. | Rapid City | (605) 737-4815

PERFORMING ARTS CENTER OF RAPID CITY

601 Columbus St | Rapid City | (605) 394-6191 | Box
Office (605)394-1786

PETRIFIED FOREST OF THE BLACK HILLS

8220 Elk Creek Rd. | Piedmont | (605) 787-4560

PIONEER AUTO MUSEUM & PRAIRIE TOWN

503 5th St. E | Murdo | (605) 669-2691

PRAIRIE BERRY WINERY

23837 US-385 | Hill City | (877) 226-9453

PRAIRIE EDGE TRADING CO. & GALLERIES

606 Main St. | Rapid City | (605) 324-3086

REPTILE GARDENS

8955 US-16 | Rapid City | (800) 335-0275

RUSHMORE CAVE

13622 SD-40 | Keystone | (605) 255-4384

RUSHMORE TRAMWAY ADVENTURES

203 Cemetery Rd. | Keystone | (605) 666-4478

SANFORD LAB HOMESTAKE VISITOR CENTER

160 Main St. W | Lead | (605) 584-3110

SOUTH DAKOTA AIR AND SPACE MUSEUM

2890 Davis Dr. | Ellsworth AFB | (605) 385-5188

STORYBOOK ISLAND

1301 Sheridan Lake Rd. | Rapid City | (605) 342-6357

STURGIS MOTORCYCLE MUSEUM & HALL OF FAME

999 Main St. | Sturgis | (605) 347-2001

SUZIE CAPPA ART CENTER

722 St. Joseph St. | Rapid City | (605) 791-3578

TERRY PEAK SKI AREA

21120 Stewart Slope Rd. | Lead | (605) 584-2165

THE BROTHEL DEADWOOD

610 Main St. | Deadwood | (605) 559-0231

THE JOURNEY MUSEUM & LEARNING CENTER

222 New York
St. | Rapid
City | (605)
394-6923

THE MONUMENT

444 Mount
Rushmore Rd. |
Rapid City | (605)
394-4115

THE NATIONAL PRESIDENTIAL WAX MUSEUM

609 US-16A | Keystone | (605) 666-4455

THE SCULPTURE PROJECT: PASSAGE OF WIND & WATER

512 Main St. | Rapid City | (605) 716-7979

WATIKI INDOOR WATERPARK RESORT

1314 N Elk Vale Rd. | Rapid City | (605) 718-2445

WALL DRUG STORE

510 Main St. | Wall | (605) 279-2175

WONDERLAND CAVE

12634 Alpine Rd. | Nemo | (605) 578-1728

WORLD'S LARGEST LOG CHAIR

22493 Hwy. 385 S | Deadwood | (605) 324-0783



For general information on firearm safety training Contact the SD GFP
 For specific zone areas/dates: Online: <https://gfp.sd.gov>
 Telephone: 605.223.7660, or scan the QR code.



CARRY YOUR LICENSE ON YOUR SMARTPHONE DEVICE:

Before heading into the field this fall, log into your GFP online licensing account from your smartphone device to view your small game, fishing or trapping license and take a picture or screenshot of it with your device (Android, iPhone, etc.). This electronic version is now an acceptable method of carrying a small game, fishing or trapping license. If you choose to print and carry a paper copy of your small game, fishing or trapping license, that continues to be an allowed practice.

Antelope Season

Access Permit Archery
 Start: Aug 16, 2025
 End: Oct 31, 2025

Landowner
 Start: Oct 4, 2025
 End: Oct 19, 2025

Archery (Season closed during firearms season)
 Start: Aug 16, 2025
 End: Oct 31, 2025

Firearms
 Start: Oct 4, 2025
 End: Oct 19, 2025

Special
 Start: Oct 4, 2025
 End: Oct 19, 2025

Bighorn Sheep Season

Black Hills
 Start: Sep 1, 2025
 End: Dec 31, 2025

Custer State Park
 Start: Sep 1, 2025
 End: Dec 31, 2025

Deer Season

East River Landowner
 Start: Nov 22, 2025
 End: Dec 21, 2025

West River Special Buck
 Start: Nov 15, 2025
 End: Nov 30, 2025

East River Special Buck
 Start: Nov 22, 2025
 End: Dec 7, 2025

West River Landowner
 Start: Nov 15, 2025
 End: Dec 21, 2025

Archery
 Start: Sep 1, 2025
 End: Jan 1, 2026

Muzzleloader
 Start: Dec 1, 2025
 End: Jan 1, 2026

Apprentice and Mentored
 Start: Sep 13, 2025
 End: Jan 1, 2026

Deer Season (Contd)

Black Hills
 Start: Nov 1, 2025
 End: Nov 30, 2025

West River
 Start: Nov 15, 2025
 End: Nov 30, 2025

East River
 Start: Nov 22, 2025
 End: Dec 7, 2025

Custer State Park
 Start: Nov 1, 2025
 End: Dec 15, 2025

East River Nonresident Landowner
 Start: Nov 22, 2025
 End: Dec 7, 2025

Municipal Archery
 Start: Sep 1, 2025
 End: Jan 1, 2026

Black Hills Landowner
 Start: Nov 1, 2025
 End: Nov 30, 2025

Elk Season - Custer

State Park Firearms
 Start: Oct 1, 2025
 End: Oct 31, 2025

Elk Season

Black Hills Archery
 Start: Sep 1, 2025
 End: Sep 30, 2025

Landowner Black Hills Archery
 Start: Sep 1, 2025
 End: Sep 30, 2025

Mountain Lion Season

Statewide
 Start: Dec 26, 2024
 End: Dec 25, 2025

Black Hills Fire Protection District
 Start: Dec 26, 2024
 End: Apr 30, 2025

Paddlefish

Gavins Point Dam Archery
 Start: Jun 1, 2025
 End: Jun 30, 2025

Canada Goose

Resident Special
 Start: Oct 18, 2025
 End: Dec 21, 2025

Pheasant Season

Youth Only
 Start: Sep 27, 2025
 End: Oct 5, 2025

Traditional
 Start: Oct 18, 2025
 End: Jan 31, 2026

Resident Only

Start: Oct 11, 2025
 End: Oct 13, 2025

Spring Light Goose Conservation Order

Start: Feb 17, 2025
 End: May 15, 2025

Tundra Swan Season

Start: Oct 4, 2025
 End: Jan 9, 2026

Turkey Season

Fall Mentored
 Start: Nov 1, 2024
 End: Jan 31, 2025

Spring Prairie
 Start: Apr 12, 2025
 End: May 31, 2025

Spring Black Hills
 Start: Apr 26, 2025
 End: May 31, 2025

Spring Custer State Park
 Start: Apr 26, 2025
 End: May 18, 2025

Spring Archery
 Start: Apr 12, 2025
 End: May 31, 2025

Spring Mentored
 Start: Apr 12, 2025
 End: May 31, 2025

Fall Mentored
 Start: Nov 1, 2025
 End: Jan 31, 2026

Fall Prairie
 Start: Nov 1, 2025
 End: Jan 31, 2026

You can purchase hunting and fishing licenses, cross-country ski passes and snowmobile trail stickers through the Electronic License System. Online <http://gfp.sd.gov>, 605.223.7660
Or visit one of the ELS agents available throughout the area:

BOX ELDER

BOX ELDER TRUE VALUE

540 N Ellsworth Rd. | Box Elder | (605) 791-0898

CUSTER

CUSTER ACE HARDWARE

833 Mt. Rushmore Rd. | Custer | (605) 673-2227

FAITH

LYNNS DAKOTAMART

114 Main St. | Faith | (605) 967-2622

HILL CITY

HEART OF THE HILLS EXXON

101 Main St. | Hill City | (605) 574-2077

HILL CITY HARDWARE

551 E Main St. | Hill City | (605) 574-2400

KEYSTONE KEYSTONE

COUNTRY STORE

408 1st St. |
Keystone |
(605) 666-
4912

LEAD

LYNN'S DAKOTAMART

145 Glendale Dr. | Lead | (605) 388-8948

TWIN CITY ACE HARDWARE

145 Glendale Dr. | Lead | (605) 559-1110

RAPID CITY

CABELAS

3231 E Mall Dr. | Rapid City | (605) 388-5600

FIRST STOP GUN & COIN

701 Main St. | Rapid City | (605) 341-5211

FLEET FARM

1001 E Mall Dr. | Rapid City | (605) 791-8200

HOLIDAY STATIONSTORE (#449)

1846 Eglin St. | Rapid City | (605) 342-8005

HOLIDAY STATIONSTORE (#455)

3216 E Hwy. 44 | Rapid City | (605) 343-4398

HOLIDAY STATIONSTORE (#465)

1610 Caregiver Cir. | Rapid City |
(605) 343-5421

HOLIDAY STATIONSTORE (#512)

123 Deadwood Ave. | Rapid City |
(605) 348-2191

RAPID CITY HARDWARE

770 Mountain View Rd. | Rapid City |
(605) 343-5150

RUNNINGS (#27)

1020 N LaCrosse St. | Rapid City |
(605) 342-9008

SCHEELS

1225 Elgin St. | Rapid City | (605) 342-9033

WALMART (#1604)

1200 N LaCrosse St. | Rapid City |
(605) 342-9444

WALMART (#3872)

100 Stumer Rd. | Rapid City | (605) 877-3291

SPEARFISH

HIGH MOUNTAIN OUTFITTERS

313 W Jackson Blvd. | Spearfish |
(605) 717-2982

WALMART (#1543)

2825 1st Ave. | Spearfish | (605) 642-2460

STURGIS

RUNNINGS #52

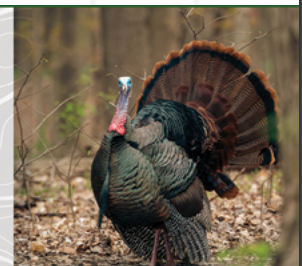
2425 Lazelle St. | Sturgis | (605) 347-6352

STURGIS ACE HARDWARE

2222 Junction Ave. | Sturgis | (605) 347-4031



SAFETY FIRST: Treat every firearm as if it's loaded and always point the muzzle in a safe direction. Wear appropriate protective gear. Be aware of your surroundings and the location of fellow hunters.
KNOW YOUR GAME & REGULATIONS: Familiarize with the species you're hunting, their habitats, behaviors, and migration patterns. Research and adhere to all local, state, and federal hunting regulations. **PRACTICE SHOOTING SKILLS:** This will improve your accuracy and confidence. Work on different shooting positions, target tracking, and quick shots. **SCOUTING & HABITAT KNOWLEDGE:** Scout potential hunting areas before the season to identify their habitats, feeding grounds, and roosting sites. **USE PROPER GEAR & TECHNIQUES:** Choose hunting gear specific to the species you're targeting. Research and practice hunting techniques, such as camouflage, concealment, calling and understand wind direction.



Remember that ethical hunting practices, respect for wildlife, and safety should always be paramount while participating in any hunting activity. Additionally, always make sure to follow local hunting guidelines and regulations to protect the environment and wildlife populations.
HAPPY HUNTING!

Fishing Licensing and Limits

Boating safety is critical for anyone who operates a boat or spends time on the water. Here are some general boating safety tips to keep in mind:

- **Wear a life jacket:** Always wear a life jacket while boating. Make sure the life jacket is appropriate for your weight and is U.S. Coast Guard approved.
- **Know the weather:** Check the weather forecast before you go boating and keep an eye on changing conditions. If you notice darkening clouds, rough winds or sudden drops in temperature, get off the water.
- **Use navigation aids:** Use navigation aids like buoys and beacons to help you navigate safely.
- **Maintain your boat:** Keep your boat well-maintained and in good working condition. Make sure all safety equipment is in good condition and functioning properly.
- **Avoid alcohol:** Do not drink alcohol while operating a boat. It is illegal and increases the likelihood of accidents.
- **Watch your speed:** Observe speed limits and maintain a safe speed based on conditions. Remember, slower speeds may be necessary in crowded areas or in inclement weather.
- **Be aware of other boats:** Watch for other boats and be aware of their movements. Always assume other boaters may not see you.
- **Know the rules:** Learn and follow boating safety laws and regulations. This includes rules for navigation, safety equipment, and right-of-way.
- **File a float plan:** Always let someone know where you are going and when you plan to return. File a float plan with a trusted person or a marina.
- **Take a boating safety course:** Consider taking a boating safety course to improve your skills and knowledge.



By following these general boating safety tips, you can reduce the likelihood of accidents and enjoy a safe and enjoyable time on the water.

2025 Resident Fees

ANNUAL FISHING.....	\$31*
ONE-DAY FISHING.....	\$10*
SENIOR ANNUAL FISHING (65 and over).....	\$17*
SETLINE.....	\$5
HOOP NET.....	\$10
NURSING FACILITY GROUP.....	\$35

*Agent fee not included in price.

2025 Non Resident Fees

ANNUAL FISHING.....	\$80*
YOUTH FISHING (under 18).....	\$0
THREE-DAY FISHING.....	\$45*
ONE-DAY FISHING.....	\$26*

*Agent fee not included in price.

SPECIES	DAILY LIMIT
Walleye (includes Walleye/Sauger/Saugeye) -	4 (only one 20" or longer)
Northern Pike -	6
Muskellunge, Tiger Muskie -	Catch & Release Only
Trout, Salmon, Splake (any combination) -	5
Largemouth/Smallmouth Bass (any combination) -	5
Yellow Perch -	15
Crappie (white & black in any combination) -	15
Sunfish (Bluegill, Green, Pumpkinseed, Redear, Orangespotted in any combination) -	15
White Bass/Rock Bass -	No Limit
Catfish (any combination) -	10 (Only 1 Flathead 30" or longer)
Sturgeon -	Season Closed
Paddlefish -	Available by special permit only
Smelt -	5 gallons
Lake Herring/Lake Whitefish/Bullhead/Rough Fish -	No limit

HONEY Glazed CHICKEN



Simple meal with a Gourmet Feel

INGREDIENTS

- 4 boneless, skinless chicken breasts
- 1/2 cup honey
- 1/4 cup soy sauce
- 2 tablespoons olive oil
- 2 tablespoons apple cider vinegar
- 2 garlic cloves, minced
- Salt and pepper to taste

INSTRUCTIONS

- 1 Preheat the oven to 375°F (190°C).
- 2 In a small bowl, whisk together the honey, soy sauce, olive oil, apple cider vinegar, garlic, salt, and pepper.
- 3 Place the chicken breasts in a baking dish and pour the honey glaze over the chicken, making sure it's evenly coated.
- 4 Bake in the preheated oven for 25-30 minutes, or until the chicken is cooked through and no longer pink in the center.
- 5 After 15 minutes of baking, remove the chicken from the oven and brush the remaining honey glaze over the chicken. Return the chicken to the oven and continue baking.
- 6 Once done, remove from the oven and let rest for a few minutes before serving.
- 7 You can garnish with sesame seeds and chopped green onions if you like.

Enjoy your delicious
honey glazed chicken!

PREP: 10 MIN • TOTAL: 40 MIN



BARBECUE DO'S:

- use proper barbecue equipment and tools, such as a grill, tongs, and spatulas.
- preheat your grill before placing any food on it.
- marinate your meat before cooking to enhance the flavor.
- keep a close eye on your food while grilling to prevent overcooking or burning.
- use a meat thermometer to ensure that your meat is cooked to the correct internal temperature.
- let your meat rest for a few minutes before slicing or serving to allow the juices to redistribute.
- keep your grill and utensils clean to prevent any foodborne illness.

BARBECUE DON'TS:

- use lighter fluid to start your grill. Instead, use a chimney starter or electric starter.
- overcrowd your grill. Leave enough space between the pieces of meat to ensure even cooking.
- use a fork to flip your meat. Piercing the meat can cause it to lose its juices and become dry.
- baste your meat with sugary sauces too early in the cooking process, as it can burn and create a bitter taste.
- leave cooked meat out in the sun for too long, as it can spoil quickly.
- assume that meat is fully cooked by its color. Always use a meat thermometer to check the internal temperature.
- leave your grill unattended while it's still hot. Always make sure to properly cool it down before leaving it.





Embrace the Splendors of SOUTH DAKOTA OUTDOORS

BADLANDS NATIONAL PARK: Explore the otherworldly landscapes of Badlands National Park, known for its unique rock formations, rugged canyons, and expansive prairies. Hiking trails allow you to discover the park's diverse wildlife and stunning vistas.

BLACK HILLS NATIONAL FOREST: The Black Hills offer a wealth of outdoor adventures. You can hike to iconic landmarks like Harney Peak, explore scenic drives, go camping, fishing, or enjoy mountain biking through the forest's picturesque trails.

CUSTER STATE PARK: With its rolling hills, granite peaks, and pristine lakes, Custer State Park is a nature lover's paradise. Drive along the Wildlife Loop Road to observe a variety of animals, including bison, deer, elk, and bighorn sheep. Hiking, horseback riding, and fishing are also popular activities here.

MOUNT RUSHMORE NATIONAL MEMORIAL: Visit the iconic Mount Rushmore, where the faces of four U.S. presidents are carved into the granite cliffs. Take a leisurely stroll along the Presidential Trail for a closer look at the sculptures and enjoy the breathtaking views of the surrounding Black Hills.

WIND CAVE NATIONAL PARK: Discover the underground wonders of Wind Cave National Park, one of the world's longest and most complex caves. Join a guided tour to explore its unique formations, or enjoy hiking and wildlife viewing on the park's surface.

MISSOURI RIVER: The Missouri River flows through South Dakota, offering excellent opportunities for fishing, boating, and water sports. Anglers can try their luck at catching walleye, catfish, or smallmouth bass. Canoeing and kayaking are also popular on the river.

SPEARFISH CANYON: Located in the northern Black Hills, Spearfish Canyon is renowned for its scenic beauty. Drive along the Spearfish Canyon Scenic Byway, hike to stunning waterfalls such as Roughlock Falls and Bridal Veil Falls, or go rock climbing in this picturesque canyon.

MICKELSON TRAIL: If you enjoy cycling or hiking, the George S. Mickelson Trail is a must-visit. Stretching for 109 miles through the Black Hills, this converted railroad line offers stunning views, trestle bridges, and numerous trailheads for convenient access.

SYLVAN LAKE: Located in Custer State Park, Sylvan Lake is a serene oasis nestled amidst granite cliffs. Enjoy swimming, kayaking, or paddleboarding in the crystal-clear waters, or take a leisurely hike around the lake on the Sylvan Lake Shore Trail.

OUTDOOR ACTIVITIES IN RAPID CITY: Rapid City serves as a gateway to many outdoor adventures. Explore the nearby Black Hills, visit beautiful parks like Canyon Lake Park and Dinosaur Park, or go rock climbing in the Needles area.



GO GREEN

Reduce, Reuse, Recycle

reduce waste, reuse materials & recycle properly



Cut back on single-use plastics, conserve water, drive less



Community/Home Gardens: Really good at absorbing carbon dioxide. Cuts down on pesticides/fertilizers. Also benefits mental health and provides fresh food.

Composting: Decreases the amount of trash in landfills and reduces carbon emissions.

Plant Trees: Planting trees is a classic Earth Day activity.

Local Food: Buy local sustainable food.

Clean-Up Events: Organize or participate in local clean-up efforts.

Upcycle Crafts: Get creative by turning old items into new useful objects.



Mosquitoes

Prevention & Health Risks



A MOSQUITO FREE YARD

Create an environment in your yard that invites animals that like to eat mosquitoes. Some things that enjoy eating mosquitoes are:

- Bats
- Frogs
- Fish
- Turtles
- Birds
- Dragonflies

To help repel mosquitoes, plant some of the different vegetation listed:

- Citronella
- Geranium
- Eucalyptus
- Rosemary
- Basil
- Anise
- Mint
- Marigolds
- Catnip
- Wormwood
- Tansy
- Lavender
- Cedar
- Cloves

Don't have stagnant water sitting around in things like buckets or tires.

BE SAFE WHILE OUTDOORS

When a mosquito bites you it can leave saliva in your body. If the mosquito is infected it can transfer diseases to you. A few of the more common diseases transmitted to people are:

- Dengue
- Encephalitis
- Malaria
- Yellow Fever.

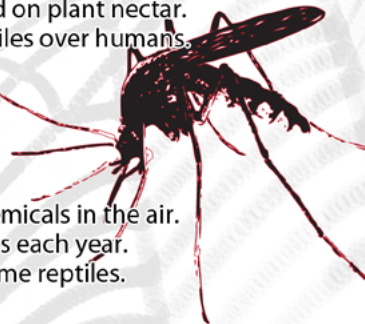
Mosquitoes can also transmit diseases to animals. A couple of these diseases are:

- Heartworm (mostly to dogs & cats)
- Encephalitis.

To reduce your chance of getting a disease from mosquitoes you can, apply mosquito repellent to your skin and clothing.

RANDOM MOSQUITO FACTS

- More than 3,000 different mosquito species can be found around the world.
- There are around 50 different mosquito species in the Upper Midwest.
- Female mosquitoes feed on blood. Male mosquitoes feed on plant nectar.
- Some mosquito species prefer to feed on animals or reptiles over humans.
- All mosquitoes need water to complete their life cycle.
- One female mosquito can lay over 200 eggs at one time.
- Mosquito larvae only need a week in water to hatch.
- Mosquito eggs can survive for more than five years.
- Mosquitoes can fly around 1 to 2 mph.
- Mosquitoes find food by sight, infrared radiation and chemicals in the air.
- Around 1,000 Americans get ill or die from mosquito bites each year.
- Mosquitoes are a huge food source for birds, bats and some reptiles.



TICKS

Diseases & Prevention



You can get a tickborne disease if you are bitten by a tick that is infected • Tickborne diseases are increasing throughout the United States. • Personal protection methods can help reduce the odds of a tick bite while enjoying the outdoors

Some symptoms of a tickborne disease

• Many tickborne diseases have similar symptoms
• Symptoms usually show up within 2-4 weeks of being bitten
Watch for symptoms like:

- Rash
- Fever
- Headache
- Fatigue
- Muscle or joint aches



Tick Removal

Prompt tick removal is important.

Use tweezers to grasp the tick close to its mouth. Gently and slowly pull the tick straight outward.

Do not squeeze the ticks' body.

Wash the area and apply an antiseptic to the bite.

Watch for early signs and symptoms of a tickborne disease. Don't use folk remedies like Petroleum Jelly or a burnt match.



Blacklegged Tick Coverage

American Dog Tick Coverage

Lone Star Tick Coverage

Blacklegged (Deer) Tick
Lyme disease
Anaplasmosis
Babesiosis
Ehrlichiosis
Powassan virus disease

American Dog (Wood) Tick
Rocky Mountain Spotted Fever
Tularemia

Lone Star Tick
Ehrlichiosis
Tularemia
Heartland virus disease
Southern Tick-Associated Rash Illness (STARI)

Protect Yourself from Tickborne Diseases

1-Know when and where you're at risk
• Primarily Mid-May through Mid-July

- Wooded and brushy areas – Blacklegged Tick
- Grassy or wooded areas – American Dog Tick

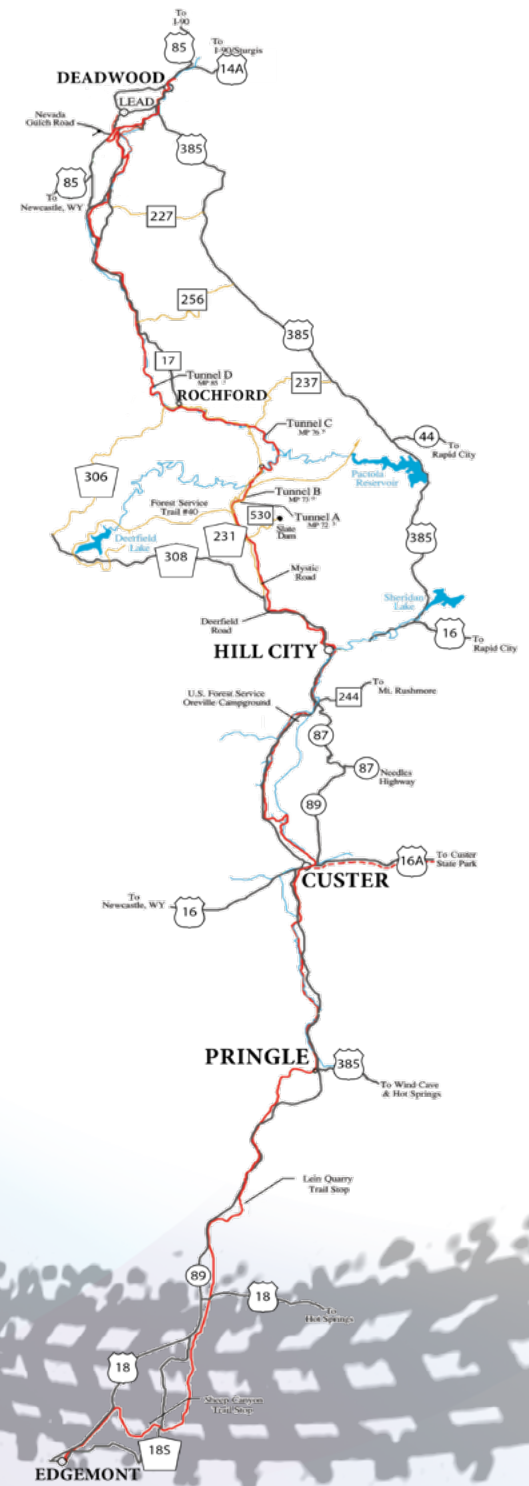
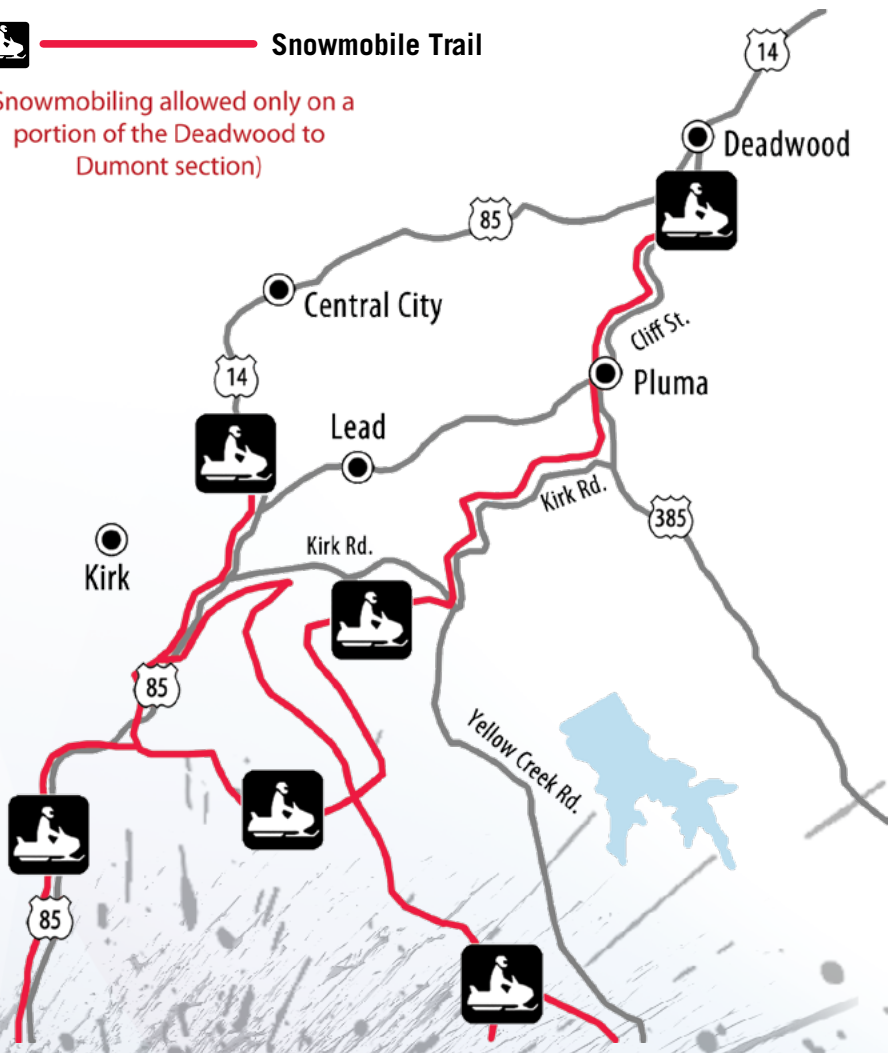
2-Wear EPA-registered tick repellent
• DEET 20-30% on skin or clothing
• Permethrin 0.5% on clothing

3-Check yourself for ticks
• Shower after being outdoors
• Check at least once a day
• Remove ticks ASAP!



 **Snowmobile Trail**

(Snowmobiling allowed only on a portion of the Deadwood to Dumont section)



Healthy & Environmentally Friendly Lawn

Choose a type of grass that thrives in your area. 3" is the optimal height for most grasses, it allows the roots to become strong and healthy. It also helps to absorb more water. Don't bag the lawn clippings, it's a natural fertilizer. Keep your mower blades sharp.



Don't water every day. Give your lawn a good soaking once or twice a week. Your lawn should get about an inch of water each week, whether it be from rain fall or a sprinkler. Water your lawn in the early morning, preferably before 10am. Watering at night time can create fungus growth.



Don't use pesticides. Correctly identify what the problem is and try a non-chemical method first. If you have to use a chemical based pesticide, try spot treating the problem area. All pesticides are toxic to some degree. Make sure to read all labels.



Fertilizers can harm the environment. Use natural organic or slow-release fertilizers. The best time to fertilize your lawn is in the fall.



— WE LIKE THE TOUGH JOBS —



19730 Red Hill Rd., Spearfish
605-642-5760 | Fisherind.com



- Residential
- Commercial
- Service Calls
- Rural wiring
- Maintenance
- Repair
- Cove & baseboard heating systems
- Free estimates given



Looking for a unique job opportunity?
We're always looking for journeymen and apprentices, so visit us!



748 Mt. Rushmore Rd.
Custer, SD
605-673-3701

steves@freemanelectric.com
www.freemanelectricinc.com

Sturgis, South Dakota: Motorcycle Rally

The Sturgis Motorcycle Rally is an annual event held in Sturgis, South Dakota.. The rally is one of the largest motorcycle rallies in the world, and attracts hundreds of thousands of bikers and motorcycle enthusiasts from around the globe.

The Sturgis Motorcycle Rally was first held in 1938, and has been held every year since then with the exception of a few years during World War II. The rally typically lasts for 10 days, and is held in early August. During the rally, bikers gather in Sturgis and the surrounding area to participate in a wide variety of events and activities.

The rally includes a number of motorcycle races and competitions, including hill climbs, drag races, and flat track racing. There are also a variety of music concerts, bike shows, and vendor exhibits, where attendees can buy and sell motorcycle parts and accessories.

One of the most iconic events of the Sturgis Motorcycle Rally is the ride to the nearby Mount Rushmore National Memorial, where bikers can view the famous monument of four American presidents carved into the side of a mountain.

The Sturgis Motorcycle Rally has a reputation for being a wild and rowdy event, with plenty of partying and drinking. However, law enforcement officials are typically on hand to ensure that the event remains safe and orderly.

In recent years, the Sturgis Motorcycle Rally has attracted controversy due to concerns about the spread of COVID-19. Despite these concerns, the rally went ahead in 2020 and 2021, albeit with some modifications to reduce the risk of transmission.



NELSON'S Oil & Gas, Inc.

PROPANE & FUEL OIL DELIVERY
LP Gas • Fuel Oil • Diesel • Gasoline

1346 Galveston Ave.
Hot Springs, SD 57747
605-745-4189

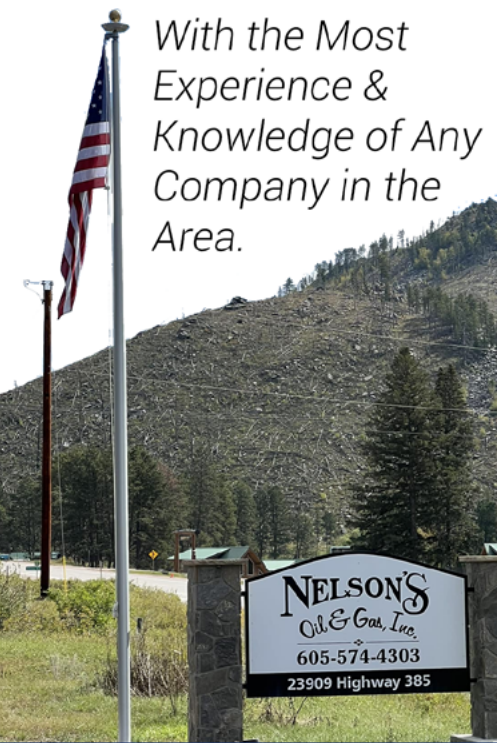
109 2nd Street
Edgemont, SD 57735
605-662-7500

831 Mt Rushmore Rd.
Custer, SD 57730
605-673-4371

23909 Hwy 385
Hill City, SD 57745
605-574-4303

720 W Main Street
Hermosa, SD 57744
605-255-4544

nelsonsoilandgas.com



*With the Most
Experience &
Knowledge of Any
Company in the
Area.*





Bird Feeder Care Tips

With the return of summer means the return of a variety of bird species. If you plan on providing food, there are a few things to keep in mind.

According to the Minnesota Department of Natural Resources, birds may become sick from moldy bird food and uncleaned bird feeders. This tends to happen in spring more often because of the rain and humidity. If there is mold growth, it can cause an avian disease called aspergillosis, which can disrupt a birds respiratory system. Birds can also get Salmonella from unclean feeders. Either of the diseases may kill the bird.

You should wash your bird feeders a few times every year to ensure their is no mold growth. You can do this with some bleach and water (one part bleach to nine parts water), just make sure to rinse and dry well. If you can, let it dry in the sun to help kill off any left over bacteria. This also applies to hummingbird feeders but, they should be cleaned weekly.

You also need to clean up the fallen seeds and hulls from the ground under the bird feeders to prevent moldy conditions. The seeds on the ground have a tendency of attracting some animals you may not want around like mice, voles, raccoons and bears.

When buying a bird feeder you should look for one with as much air flow as possible. Look for hopper-type feeders or fly-through feeders that provide good air flow. Another way to help keep the bird seed dry is by filling the bird feeder less and more often.



**Adventure Awaits!
Create Memories That Last A Lifetime!**

Spearfish Canyon Adventures
Rental shop that includes Brand new Polaris UTVs, Snowmobiles, Slingshots, Fly Fishing Gear & More! Hike to one of the nearby waterfalls from the resort.

Weddings & Events
Host your wedding, family reunion or corporate retreat with us! A beautiful, all-inclusive resort for a perfect getaway for you and all your guests!

Latchstring Restaurant
Open 7 days a week featuring breakfast, lunch & dinner entrees! Try our Cinnamon & Caramel Rolls!

Lodge Rooming & Suites
Relax in one of our rustic rooms or suites. The Berry Patch Cabin or Creekside units!

Roughlock Lounge
Featuring local beer, wide variety of cocktails, beer & wine. Homemade flatbread pizzas and meat & cheese platters



605-584-3435 www.spfcanyon.com

Spearfish Canyon Resort